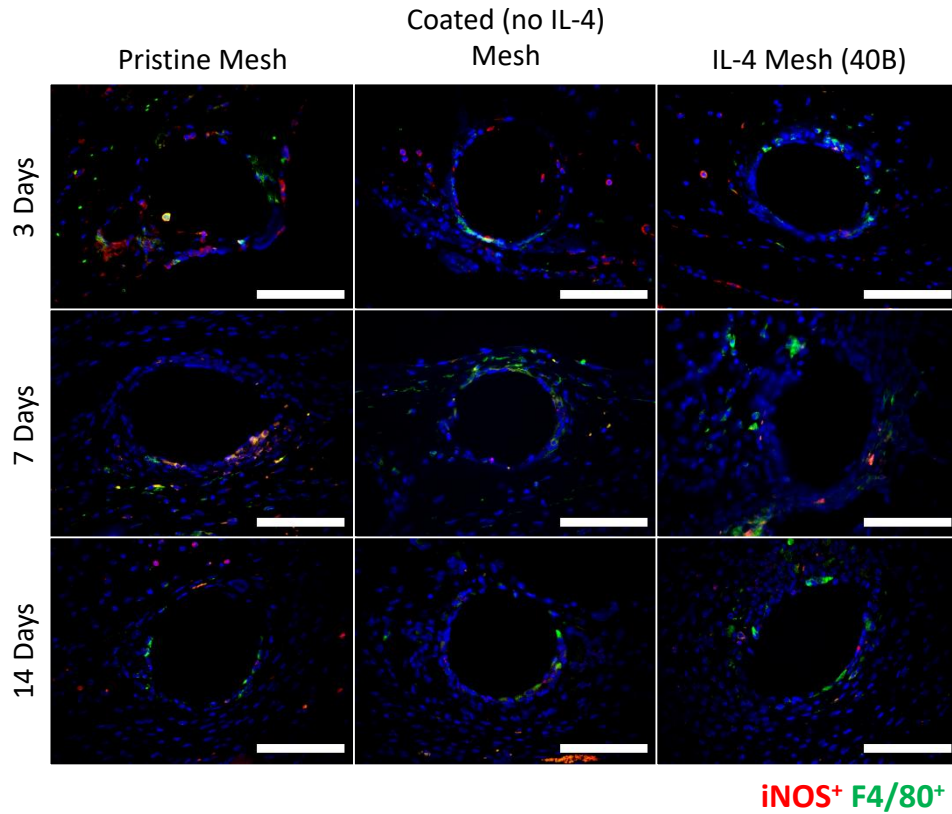


**Figure S1.** Fluorescence microscopy images of arginase-1 (red, M2-macrophage marker) and F4/80 (green, pan macrophage marker) co-immunolabelled tissue sections from mice implanted with a 1 cm<sup>2</sup> piece of pristine, coated (no IL-4) and IL-4 eluting (40B) meshes; 3, 7 and 14 days post-implantation. DAPI was used to stain cell nuclei. Scale bars represent 50  $\mu$ m.



**Figure S2.** Fluorescence microscopy images of iNOS (red, M1-macrophage marker) and F4/80 (green, pan macrophage marker) co-immunolabelled tissue sections from mice implanted with a 1 cm<sup>2</sup> piece of pristine, coated (no IL-4) and IL-4 (40B) eluting meshes; 3, 7 and 14 days post-implantation. DAPI was used to stain cell nuclei. Scale bars represent 50 μm.