

Supplemental materials

Efficacy of Fe₃O₄@polydopamine nanoparticle-labeled human umbilical cord Wharton's jelly-derived mesenchymal stem cells in the treatment of streptozotocin-induced diabetes in rats

Xiuying Li¹, Zhenhong Wei¹, Liya Wu¹, Huiying Lv¹, Yucheng Zhang¹, Jing Li¹, Hua Yao¹, Hao Zhang², Bai Yang², Xiaohua Xu³, Jinlan Jiang¹**

¹ Scientific Research Center, China-Japan Union Hospital of Jilin University, Changchun, Jilin, China

² State Key Laboratory of Supramolecular Structure and Materials, College of Chemistry, Jilin University, Changchun, Jilin, China

³ Department of Nephrology, China-Japan Union Hospital of Jilin University, Changchun, Jilin, China

* Correspondence:

¹ Scientific Research Center, China-Japan Union Hospital of Jilin University, No. 126 Xiantai Street, Changchun 130033, Jilin, China

³ Department of Nephrology, China-Japan Union Hospital of Jilin University, No. 126 Xiantai Street, Changchun 130033, Jilin, China

Tel: +86 0431 84995423;

Fax: +86 0431 84995423;

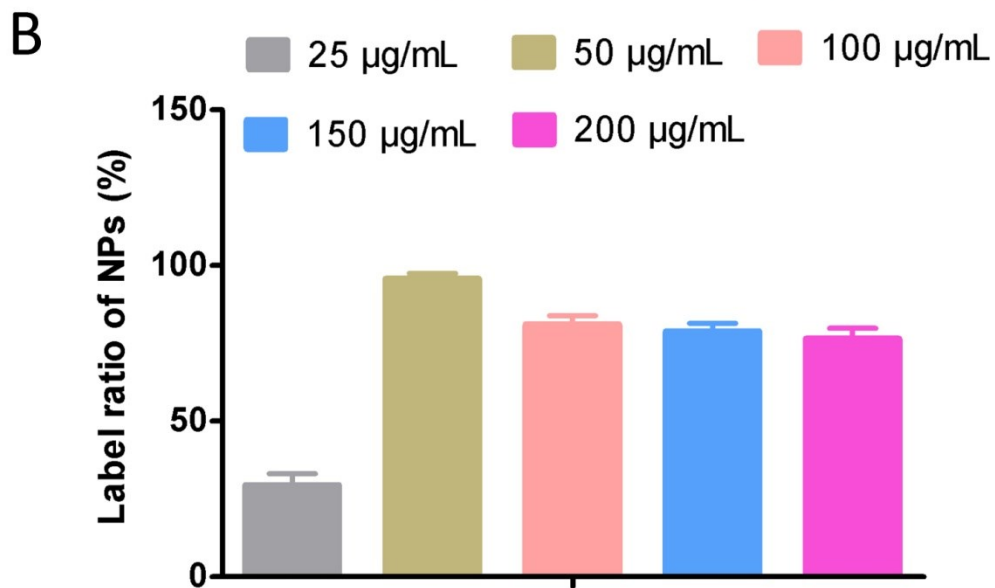
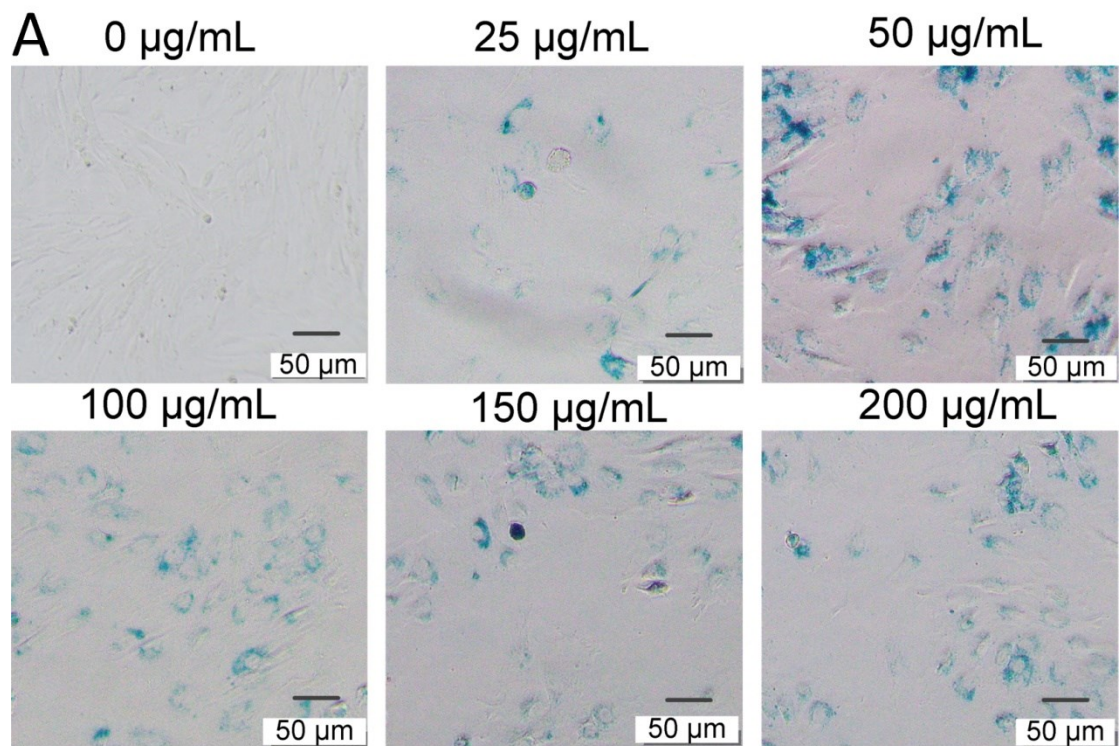


Figure S1. Verification of MSCs labeled with NPs. (A) Prussian blue iron staining of MSCs labeled with NPs. Scale bars: 50 μm . (B) The labeling ratio of NPs in MSCs.