

Supplementary Information

Zwitterionic Polydopamine Coatings Suppress Silicone Implant-Induced Capsule Formation

Chung Min Shin,^{a,‡} Soojeong Cho,^{b,‡} Dong Ho Kim,^{c,d,‡} Yooseok Ha,^a Hyo Jung Shin,^{c,e} Nara Shin,^{c,e} Dong Woon Kim,^{c,e} Chul Hee Choi,^{c,d} Woo Kyung Cho^{b,*} and Sang-Ha Oh^{a,*}

^aDepartment of Plastic and Reconstructive Surgery, Chungnam National University College of Medicine, Daejeon 35015, Republic of Korea

^bDepartment of Chemistry, Chungnam National University, Daejeon 34134, Republic of Korea

^cDepartment of Medical Science, Chungnam National University College of Medicine, Daejeon, 35015, Republic of Korea

^dDepartment of Microbiology, Chungnam National University College of Medicine, Daejeon, 35015, Republic of Korea

^eDepartment of Anatomy and Cell Biology, Brain Research Institute, Chungnam National University College of Medicine, Daejeon, 35015, Republic of Korea
Chemistry, Chungnam National University, Daejeon 34134, Korea

*Corresponding Authors

E-mail: djplastic@cnu.ac.kr; wkcho@cnu.ac.kr

[‡]These authors equally contributed to this work.

CONTENTS

- **Figure S1.** (A) Changes in color of the prepared coating solutions with various concentrations and (B) Photographs of Si/SiO₂ substrates before and after *ZW*-DOPA coatings with various concentrations. The scale bar indicates 0.4 cm.
- **Figure S2.** (A) Coating thickness on Si/SiO₂ substrates with respect to various concentrations of *ZW*-DOPA and (B) static water contact angles on the substrates before and after *ZW*-DOPA coatings.
- **Figure S3.** Photographs of the silicone implants before and after *ZW*-DOPA (0.5 mg/mL) coating. The scale on a ruler is in mm.

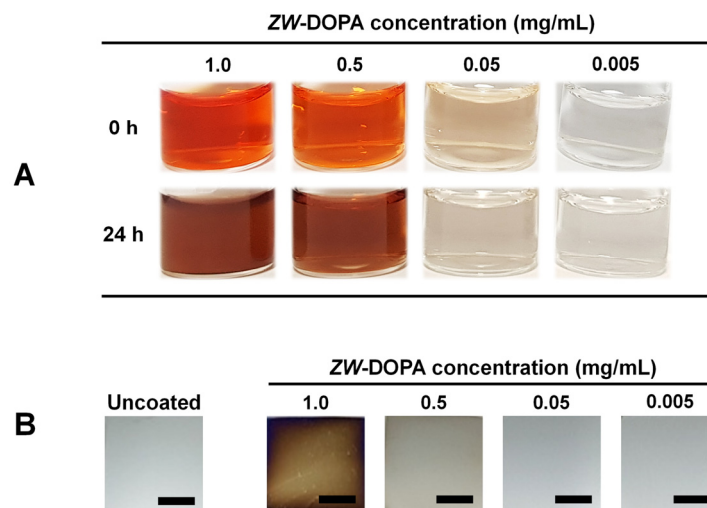


Figure S1. (A) Changes in color of the prepared coating solutions with various concentrations and (B) Photographs of Si/SiO₂ substrates before and after ZW-DOPA coatings with various concentrations. The scale bar indicates 0.4 cm.

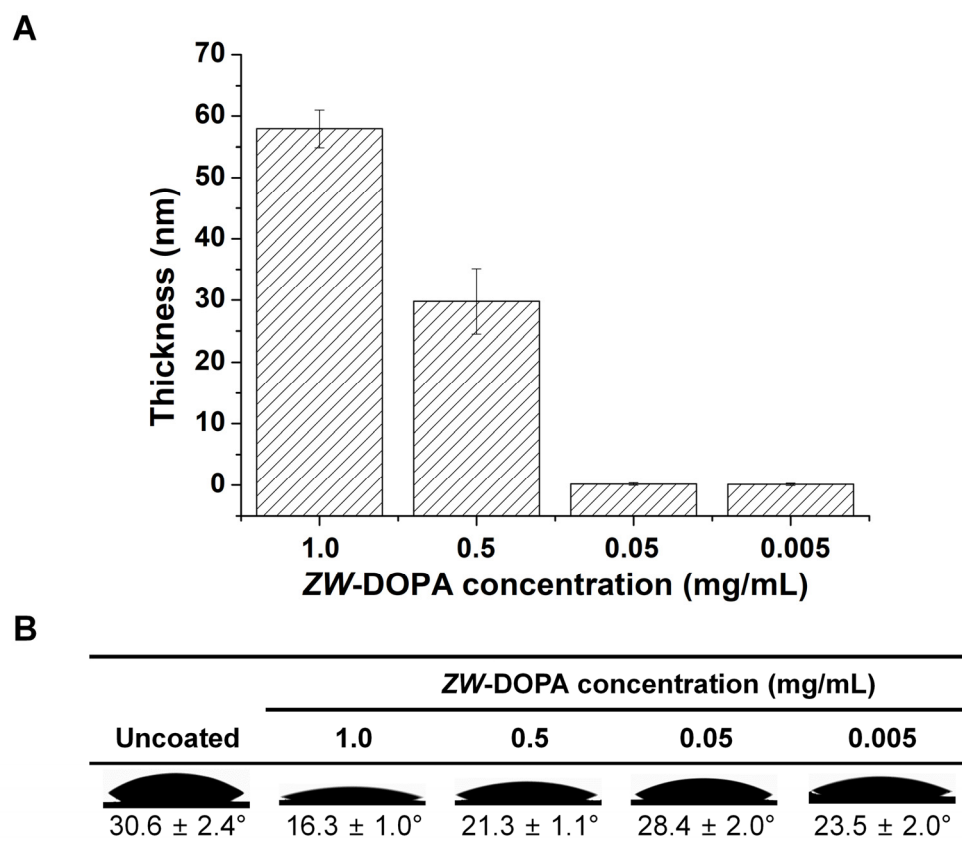


Figure S2. (A) Coating thickness on Si/SiO₂ substrates with respect to various concentrations of ZW-DOPA and (B) static water contact angles on the substrates before and after ZW-DOPA coatings.

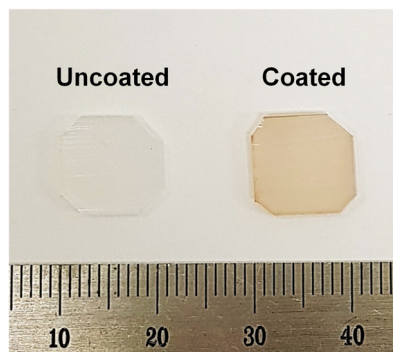


Figure S3. Photographs of the silicone implants before and after *ZW*-DOPA (0.5 mg/mL) coating. The scale on a ruler is in mm.