

Figure S1: Photograph of glass B (glass A looks almost identical).

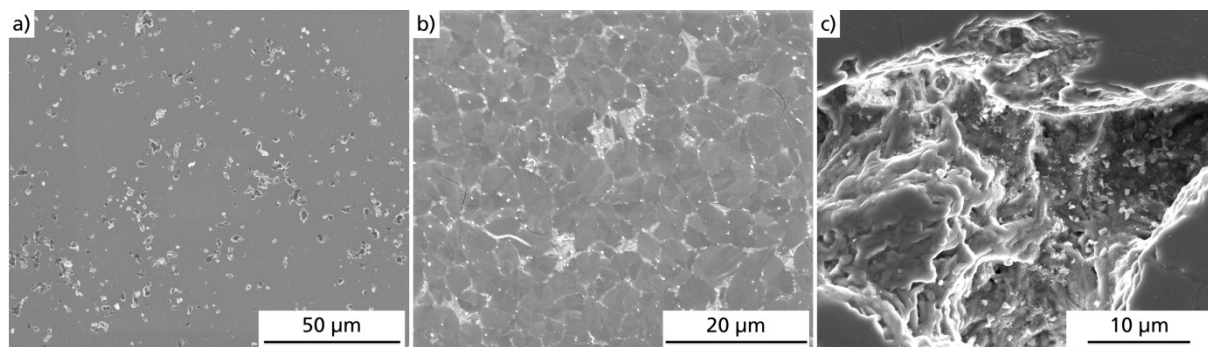


Figure S2: SEM micrographs of glass B (detection of secondary electrons). a) Overview after a heat treatment at 750 °C for 20 h and 875 °C for 5 h. b) Visualization of the crystals. c) Inner part of a pore.

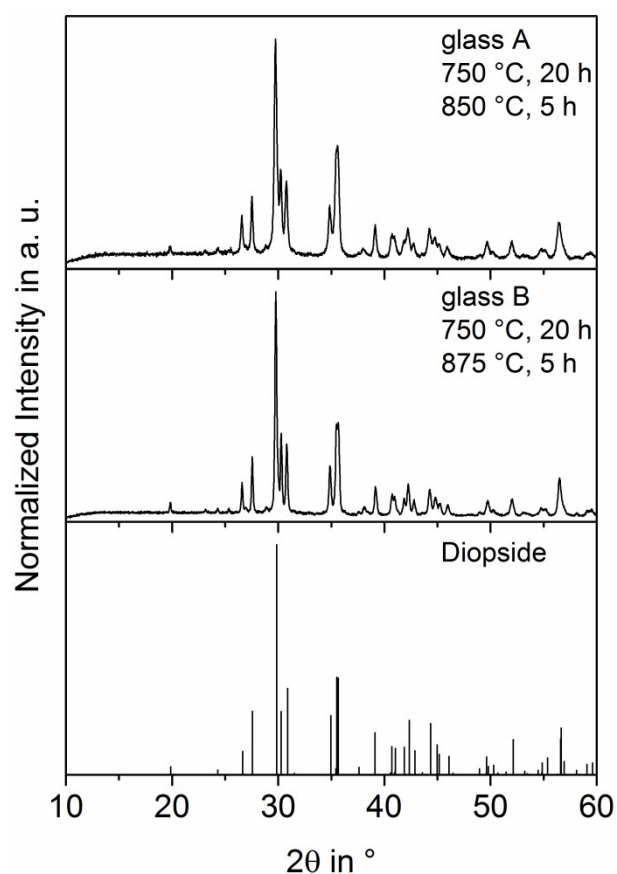


Figure S3: XRD patterns of glass A heat treated at 750 °C for 20 h and 850 °C for 5 h and glass B heat treated at 750 °C for 20 h and 875 °C for 5 h. The heat treatments were performed using bulk samples. Those samples were crushed and milled before the XRD measurement. In the lower part, the theoretical peak positions of Diopside are shown.