

## **Anisotropic Properties and Raman Spectra of $\text{LiNa}_5\text{Mo}_9\text{O}_{30}$ Single**

### **Crystal grown by TSSG method**

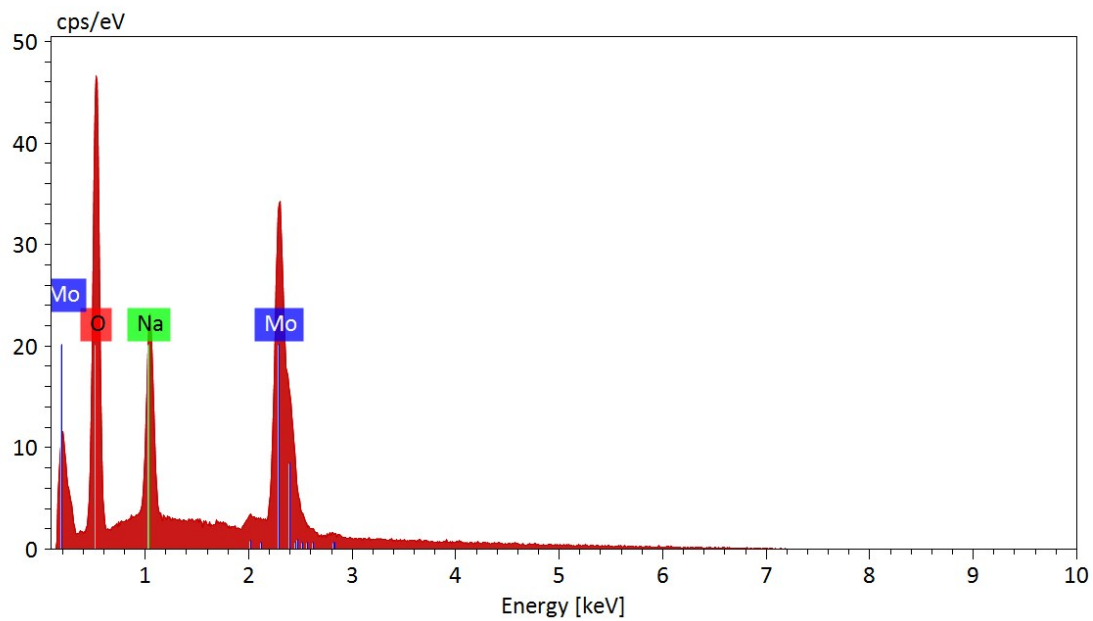
Xiaoli Du, Zeliang Gao,\* Fuan Liu, Xiaojie Guo, Xiangmei Wang, Youxuan Sun and Xutang Tao\*  
State Key Laboratory of Crystal Materials & Institute of Crystal Materials, Shandong University,  
No. 27 Shanda South Road, Jinan 250100, P.R. China.

Email: [txt@sdu.edu.cn](mailto:txt@sdu.edu.cn), [gaozeliang@sdu.edu.cn](mailto:gaozeliang@sdu.edu.cn)

### **Table of Contents**

**Fig. S1** Element detection of  $\text{LiNa}_5\text{Mo}_9\text{O}_{30}$  crystal by SEM/EDS.

**Table S1** Table of element measurement of  $\text{LiNa}_5\text{Mo}_9\text{O}_{30}$  by SEM/EDS.



**Fig. S1** Element detection of  $\text{LiNa}_5\text{Mo}_9\text{O}_{30}$  crystal by SEM/EDS.

**Table S1** Table of element measurement of  $\text{LiNa}_5\text{Mo}_9\text{O}_{30}$  by SEM/EDS.

Element	Normalized mass (%)	Atom (%)
O	57.90	84.91
Mo	35.92	8.79
Na	6.18	6.31