

(Electronic Supplementary Information)

An insight to the noncovalent interactions in two triamine based mononuclear iron(III) Schiff base complexes with special emphasis on the formation of Br \cdots π halogen bonding

Tanmoy Basak^a, Antonio Frontera^{b,*} and Shouvik Chattopadhyay^{a,*}

ORTEP diagram

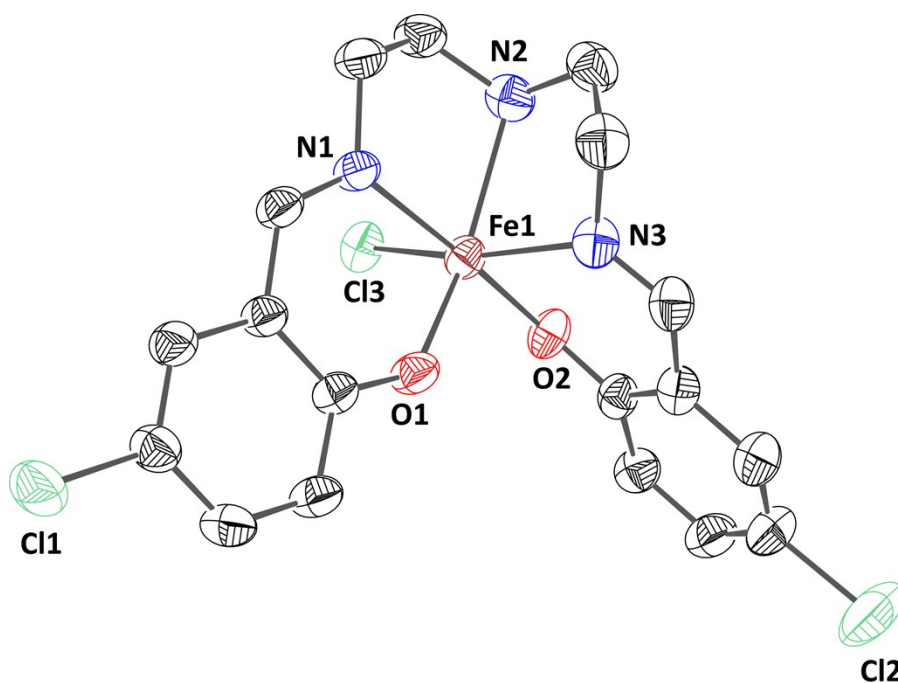


Fig. S1. ORTEP view of complex 1 with selective atom numbering scheme.

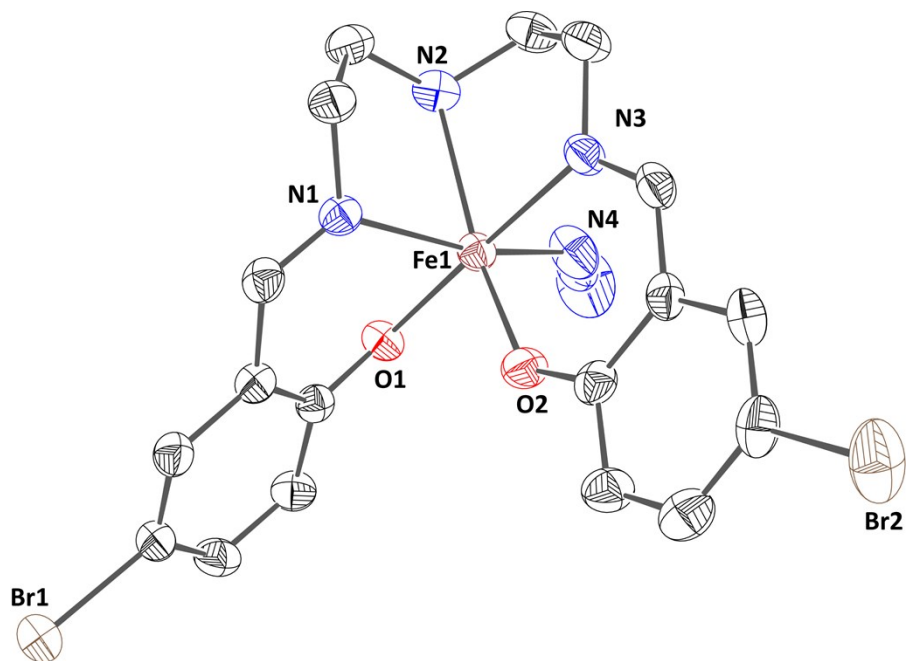


Fig. S2. ORTEP view of complex 2 with selective atom numbering scheme.

IR Spectra

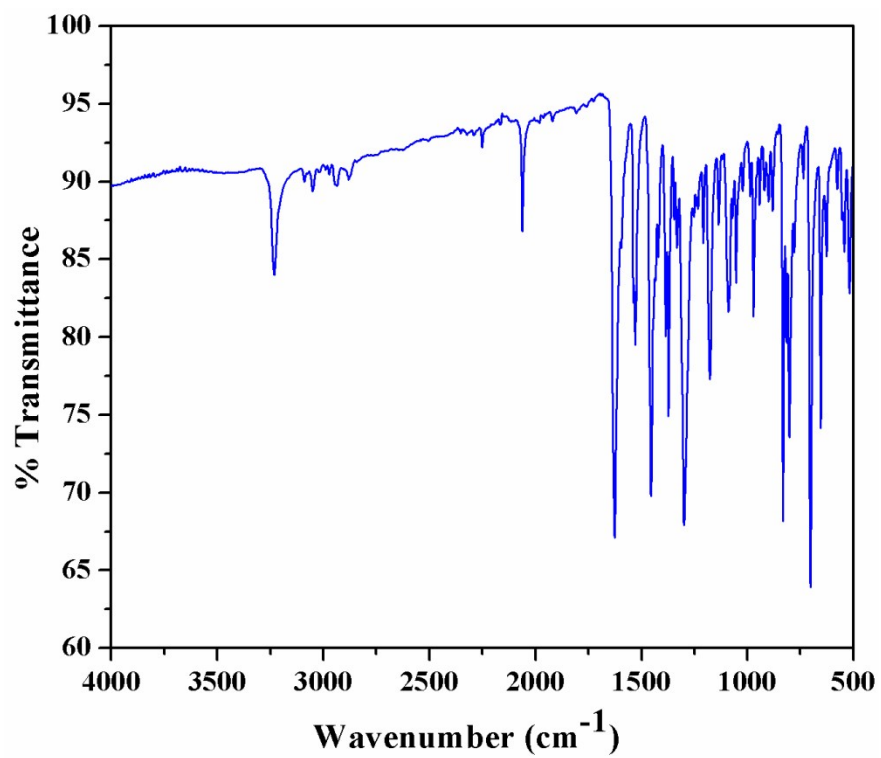


Fig. S3. IR spectrum of complex 1.

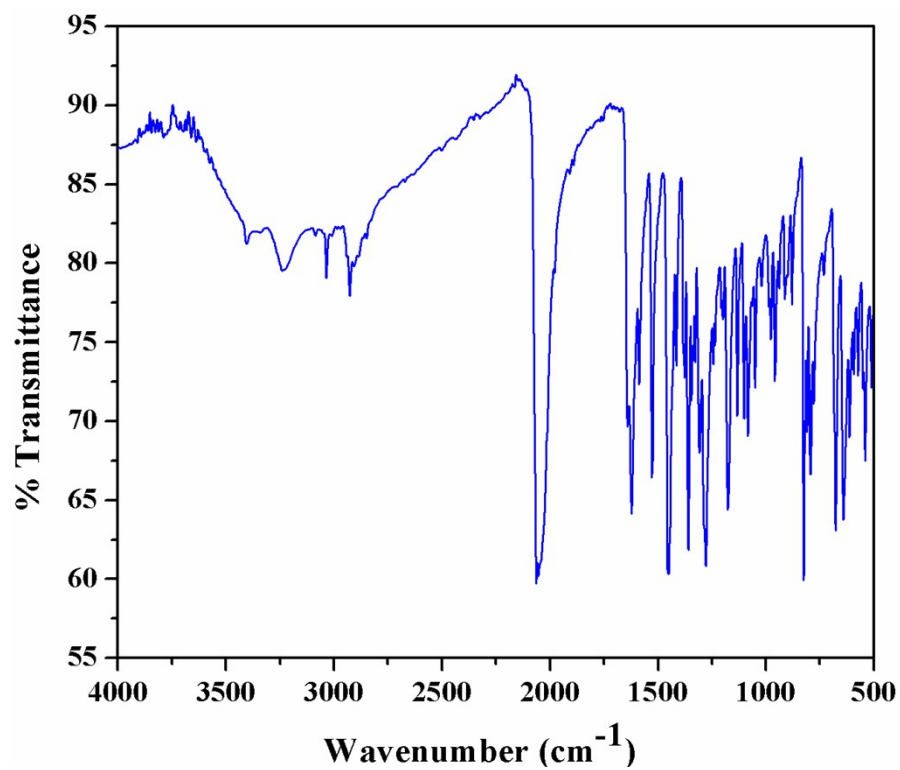


Fig. S4. IR spectrum of complex 2.

UV-Vis Spectra

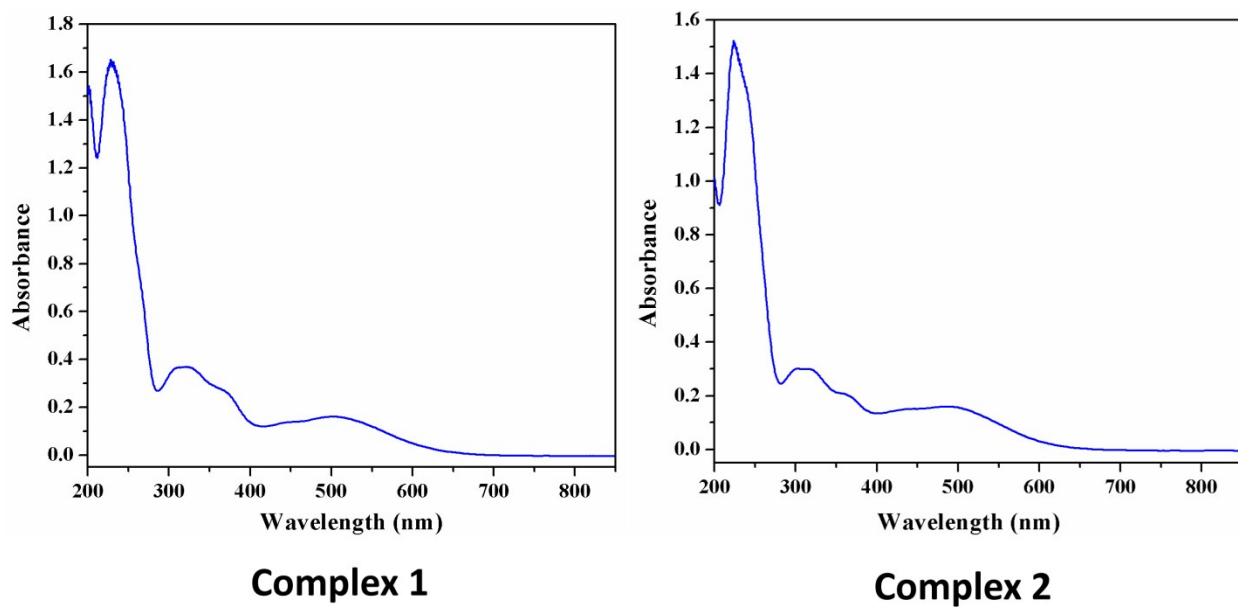


Fig. S5. UV-Vis spectra of both complexes 1 and 2.