

Supplementary Information

What Does Carbon Tolerant Really Mean?

***Operando* Vibrational Studies of Carbon Accumulation on Novel Solid Oxide Fuel Cell Anodes Prepared by Infiltration**

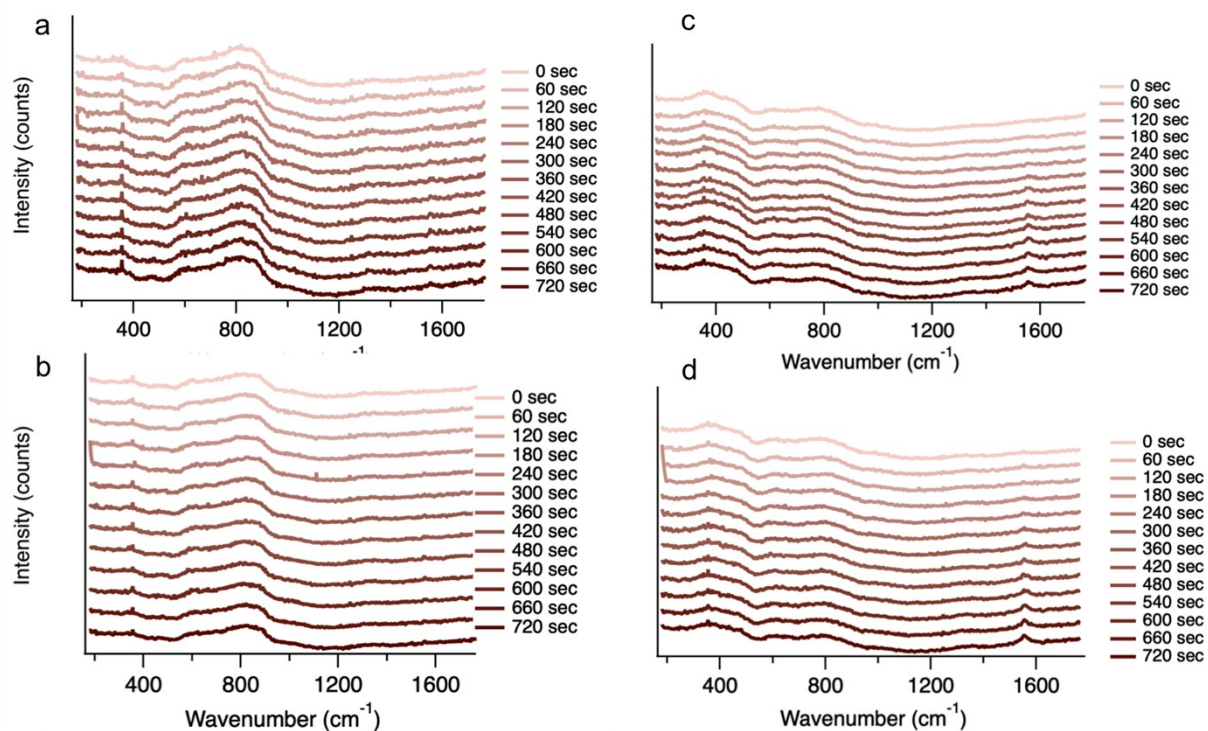
Martha M. Welander^{†a}, Daniel B. Drasbæk^{†b}, Marie L. Traulsen^b, Bhaskar R. Sudireddy^b, Peter Holtappels^b, Robert A. Walker^{a,c}

^a Department of Chemistry & Biochemistry, Montana State University, P.O. Box, 173400 Bozeman MT 59715

^b Department of Energy Conversion and Storage, Technical University of Denmark, Building 310, Fysikvej 1, 2800 Kgs. Lyngby, Denmark

^c Montana Materials Science Program, Montana State University, P.O. Box, 173400 Bozeman MT 59715

[†] Both authors contributed equally to this study



SI-1. Raman spectra of G-band growth corresponding to high current density kinetics shown in Figure 3 for (a) Co-CGO, (b) NiCGO, (c) NiCoCGO, (d) Ni infiltrates.