

## Supporting Information

### **Palladium Nanoparticles Supported on Nanosheet-Like Graphitic Carbon Nitride for Catalytic Transfer Hydrogenation Reaction**

Yan-Jhu Chou,<sup>1,2</sup> Hao-Chuan Ku,<sup>1,2</sup> Cheng-Chi Chien,<sup>1,2</sup> Chechia Hu,<sup>3,4\*</sup> and Wen-Yueh Yu<sup>1,2\*</sup>

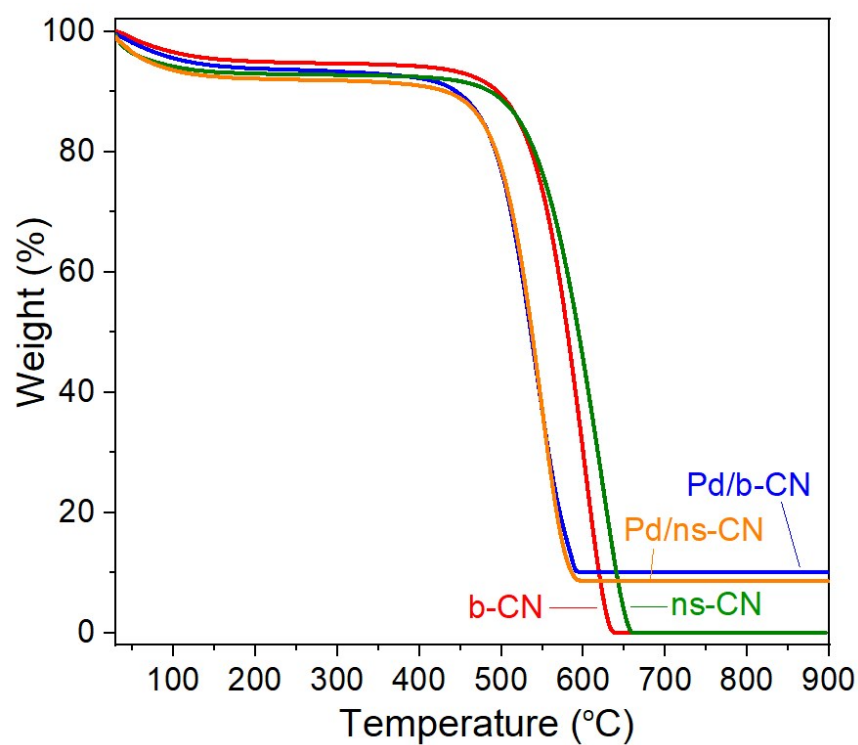
<sup>1</sup> Department of Chemical Engineering, National Taiwan University, Taipei 10617, Taiwan

<sup>2</sup> Advanced Research Center for Green Materials Science and Technology, Taipei 10617, Taiwan

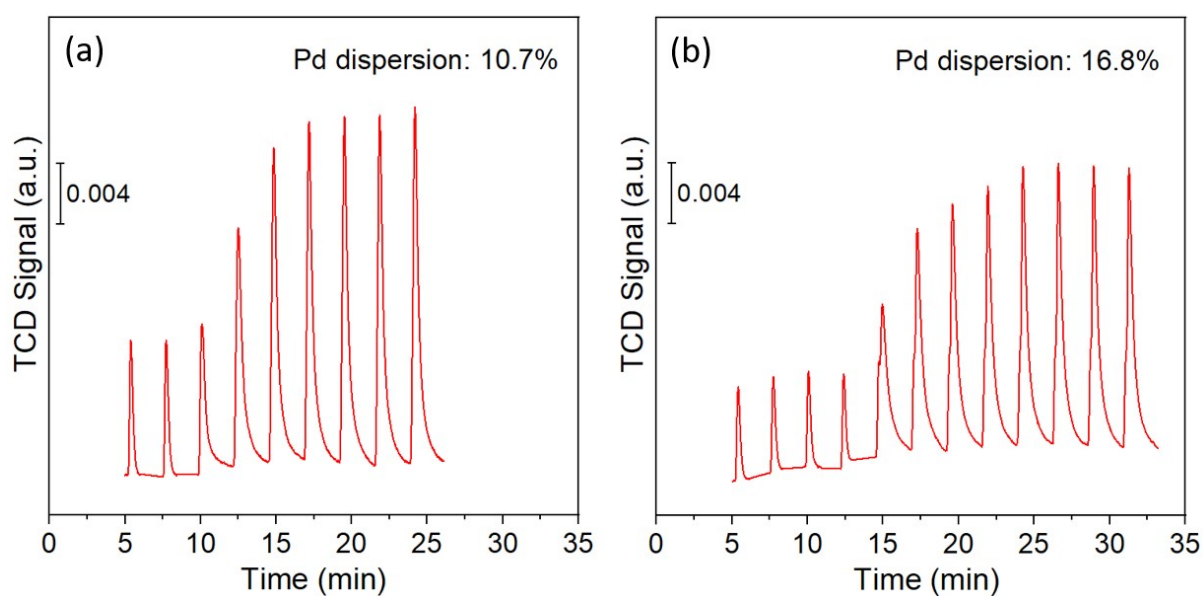
<sup>3</sup> R&D center for Membrane Technology, Chung Yuan Christian University, Taoyuan 32023, Taiwan

<sup>4</sup> Department of Chemical Engineering, National Taiwan University of Science and Technology, Taipei 106335, Taiwan

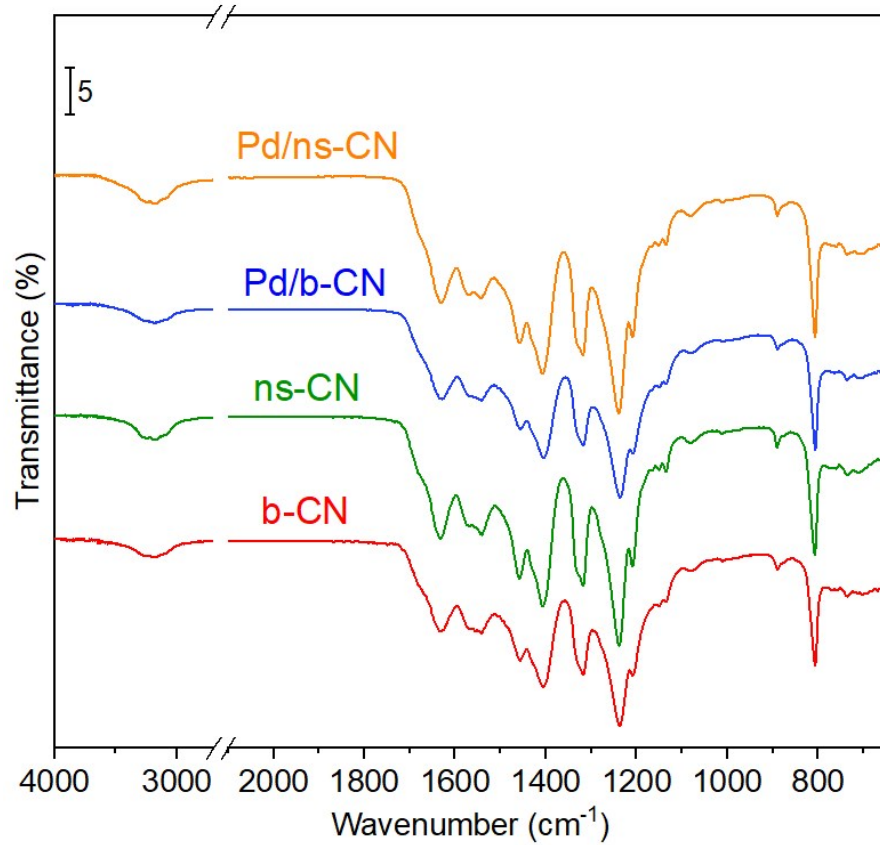
\* corresponding author CH ([chechia@mail.ntust.edu.tw](mailto:chechia@mail.ntust.edu.tw)) and WYY ([wenyueh@ntu.edu.tw](mailto:wenyueh@ntu.edu.tw))



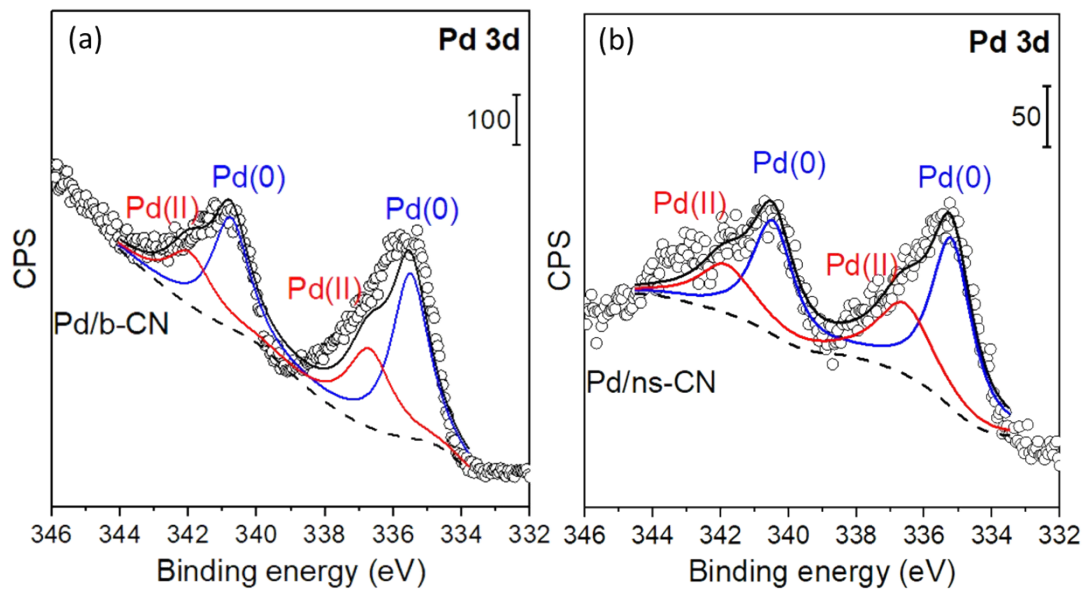
**Figure S1** TGA curves of b-CN, ns-CN, Pd/b-CN, and Pd/ns-CN.



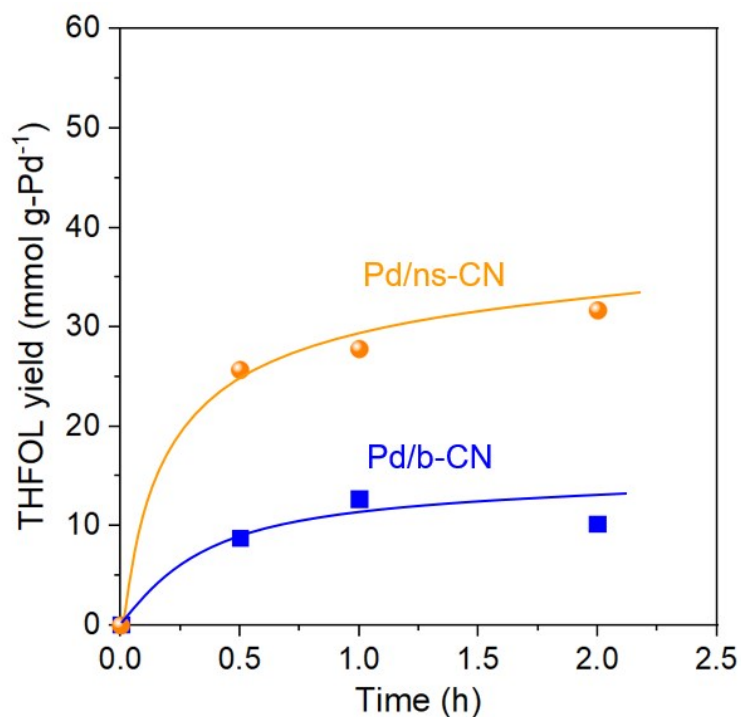
**Figure S2** H<sub>2</sub> pulse chemisorption measurements of (a) Pd/b-CN, and (b) Pd/ns-CN.



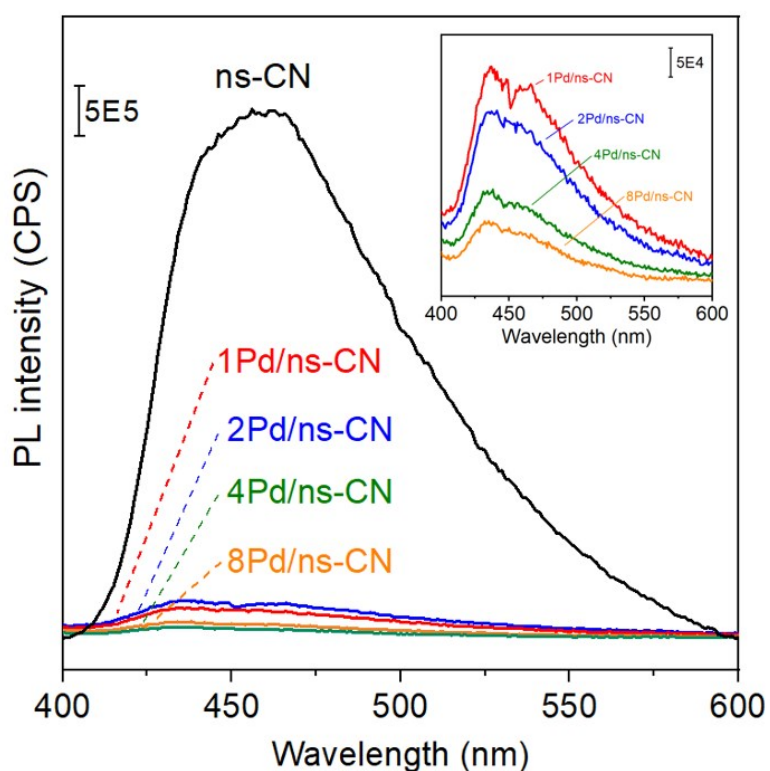
**Figure S3** FT-IR spectra of b-CN, ns-CN, Pd/b-CN, and Pd/ns-CN.



**Figure S4** XPS spectra of Pd 3d level for (a) Pd/b-CN, and (b) Pd/ns-CN.



**Figure S5** Time course of THFOL production over Pd/b-CN, and Pd/ns-CN.



**Figure S6** PL emission spectra obtained at excitation wavelength of 350 nm for ns-CN and Pd/ns-CN samples with different Pd loadings (1, 2, 4, and 8 wt%). Inset shows the enlarged PL spectra for the Pd/ns-CN samples.