

Electronic Supplementary Information

Construction of the $\text{NaTi}_2(\text{PO}_4)_3/\text{C}$ electrode with one dimensional porous hybrid structure as an advanced anode for sodium ion batteries

Yakun Tang, Lang Liu,* Yue Zhang, Jing Xie, Yang Gao, Xingyan Zeng, and Yang
Zhang

Key Laboratory of Energy Materials Chemistry, Ministry of Education; Institute of Applied Chemistry, Xinjiang University, Urumqi 830046, Xinjiang, China.

E-mail: liulang@xju.edu.cn; llyhs1973@sina.com

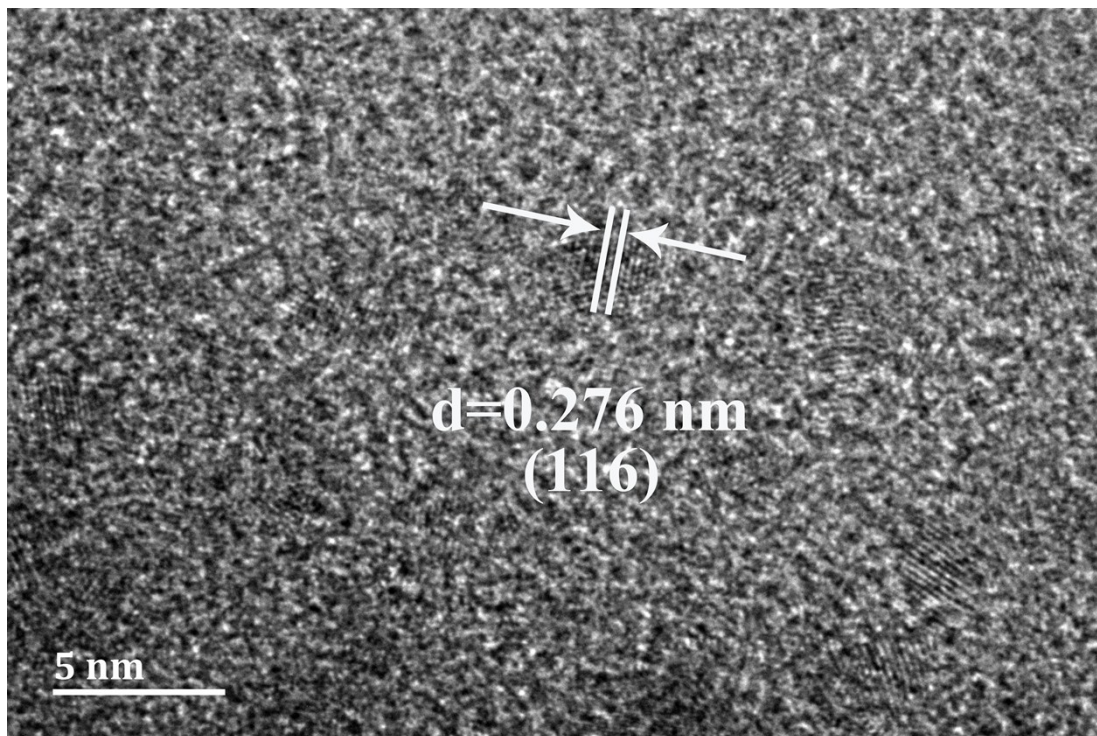


Fig. S1 The HRTEM image of NTP.

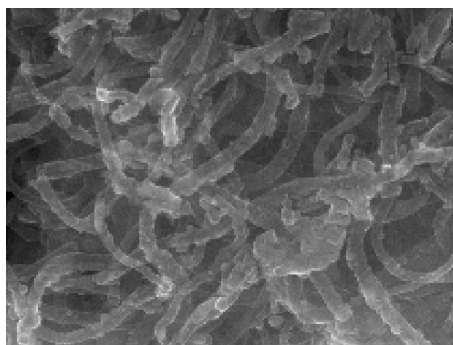


Fig. S2 The SEM image of EDS mappings.

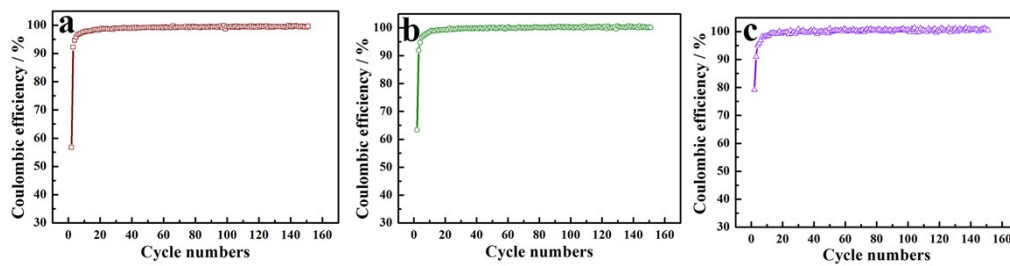


Fig. S3 The coulombic efficiency of the cycled cells at 0.2 A g⁻¹ (a), 2 A g⁻¹ (b), 5 A g⁻¹ (c).