

## Electronic Supplementary Information

### Joint toxic effects of polystyrene nanoparticles and organochlorine pesticides (chlordane and hexachlorocyclohexane) on *Caenorhabditis elegans*

Xinyu Li<sup>a</sup>, Jiani Hu<sup>a</sup>, Rong Qiu<sup>a</sup>, Xiaoting Zhang<sup>a</sup>, Yingxin Chen<sup>a</sup>, Defu He<sup>a,b\*</sup>

<sup>a</sup>School of Ecological and Environmental Sciences, East China Normal University, Shanghai, 200241, China;

<sup>b</sup>Shanghai Engineering Research Center of Biotransformation of Organic Solid Waste, East China Normal University, Shanghai, 200241, China

<sup>c</sup>Shanghai Key Laboratory for Urban Ecological Processes and Eco-Restoration, East China Normal University, Shanghai, 200241, China;

\* Corresponding author: Defu He (e-mail: [dfhe@des.ecnu.edu.cn](mailto:dfhe@des.ecnu.edu.cn))

#### Supplementary Information includes 1 figure and 3 tables:

**Fig. S1.** Characterization of polystyrene nanoplastics in the exposure media over time by a fluorescence microscope.

*Page S2*

**Table. S1.** Total concentration of OCPs in exposed solutions.

*Page S3*

**Table. S2.** Statistical results of chlordane or/and PS nanoparticles influencing the expression of *gst-4::GFP* in CL2166 *C. elegans*.

*Page S4*

**Table. S3.** Statistical results of HCH or/and PS nanoparticles influencing the expression of *gst-4::GFP* in CL2166 *C. elegans*.

*Page S4*

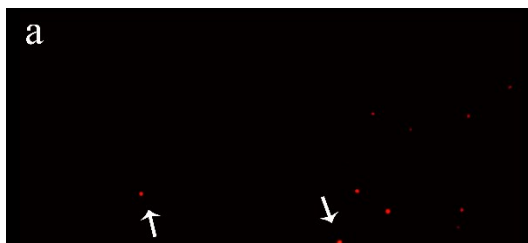


Fig. S1. Distribution of polystyrene nanoplastics in the exposure media. Images of nanoplastics (red fluorescence) in the exposure media at 0 h (a), 24 h (b) and 48 h (c) under simulative exposure condition ( $1.0 \text{ mg L}^{-1}$  PS nanoplastics), respectively. White arrows are pointing to some of fluorescence-labeled NPs. Bar =  $10 \text{ }\mu\text{m}$ .

Table. S1. Nominal and actual concentrations of OCPs in single and joint exposure solutions ( $\text{mg L}^{-1}$ ).

Nominal concentration	Actual concentration			
	Chlordane		HCH	
	Single	Joint	Single	Joint
0.1	$0.06 \pm 0.01$	$0.13 \pm 0.02$	$0.07 \pm 0.01$	$0.09 \pm 0.01$
0.5	$0.31 \pm 0.08$	$0.42 \pm 0.07$	$0.31 \pm 0.10$	$0.35 \pm 0.04$
1.0	$0.76 \pm 0.04$	$0.91 \pm 0.11$	$0.66 \pm 0.03$	$0.76 \pm 0.03$
5.0	$3.81 \pm 0.78$	$4.81 \pm 0.17$	$3.46 \pm 0.01$	$4.30 \pm 0.02$
10.0	$8.10 \pm 0.26$	$9.35 \pm 0.33$	$9.81 \pm 0.99$	$10.13 \pm 0.06$

Data: mean  $\pm$  SE, n=3

Table S2 Statistical results of chlordane or/and PS nanoparticles influencing the expression of *gst-4::GFP* in CL2166 *C. elegans* (*p* value, compared by t-test).

Groups		2 <sup>nd</sup> d		4 <sup>th</sup> d		6 <sup>th</sup> d	
		Cont.	PS NP	Cont.	PS NP	Cont.	PS NP
PS NP		0.9924	/	0.3233	/	0.1674	/
Chl (mg L <sup>-1</sup> )	0.1	0.9997	/	0.8877	/	0.2872	/
	0.5	0.0076	/	0.0010	/	0.0009	/
	1.0	0.0001	/	0.0001	/	0.0001	/
(PS NP)-Chl (mg L <sup>-1</sup> )	0.1	0.8017	0.8416	0.1863	0.9885	0.0001	0.0058
	0.5	0.0523	0.0307	0.0001	0.0471	0.0001	0.0004
	1.0	0.0006	0.0001	0.0001	0.0001	0.0001	0.0001

Table S3 Statistical results of HCH or/and PS nanoparticles influencing the expression of *gst-4::GFP* in CL2166 *C. elegans* (*p* value, compared by t-test)

Groups		2 <sup>nd</sup> d		4 <sup>th</sup> d		6 <sup>th</sup> d	
		Cont.	PS NP	Cont.	PS NP	Cont.	PS NP
PS NP		0.9918	/	0.5264	/	0.5356	/
HCH (mg L <sup>-1</sup> )	0.1	0.0962	/	0.0514	/	0.1063	/
	0.5	0.0034	/	0.0056	/	0.0110	/
	1.0	0.0001	/	0.0001	/	0.0002	/
(PS NP)-HCH (mg L <sup>-1</sup> )	0.1	0.9378	0.9896	0.2205	0.9233	0.0473	0.5005
	0.5	0.2028	0.3697	0.0072	0.1900	0.0092	0.2031
	1.0	0.0040	0.0189	0.0001	0.0017	0.0001	0.0001