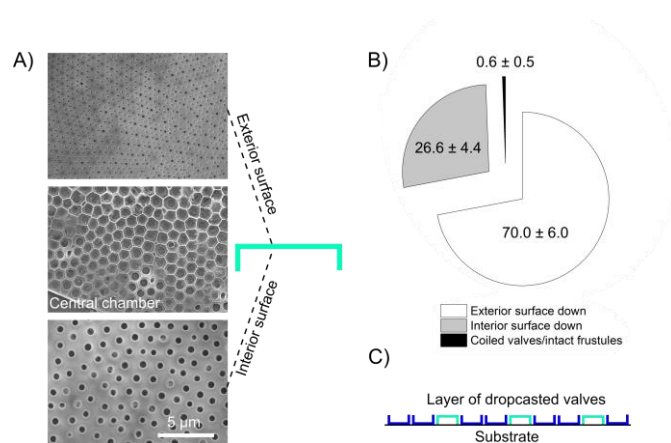


## Supplementary Figures



**Suppl. Fig. 1: Settling orientation of valves in water.** A) The valve of the species *C. granii* shows differences in surface pore diameters on the exterior and interior sides, with a central hexagonal chamber in the centre. B) When settling in water onto a substrate, valves are more likely to point down with their exterior surfaces. C) Illustration of a surface covered with drop casted valves.