

Fig. S1 Effects of Na_2SeO_3 , *B. longum* DD98, and Se-*B. longum* DD98 on the hepatic levels of TC (A), TG (B) and LDL-C (C). NC, normal control group; T2DM, model group; SS, sodium selenite group; BL, *B. longum* DD98 group; SeL, Se-*B. longum* DD98 low dosage group; SeH, Se-*B. longum* DD98 high dosage group. Values are expressed as mean \pm SD (n = 8). ^{a-f} Means with different letters differ significantly for the same indicator in liver after different treatments ($p < 0.05$).

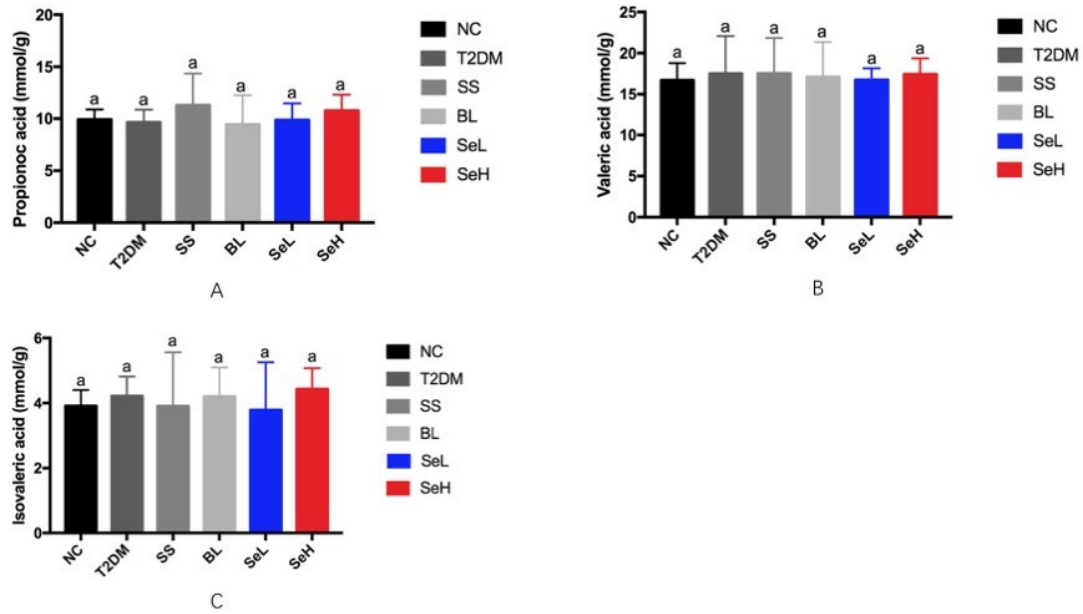


Fig. S2 Effects of Na_2SeO_3 , *B. longum* DD98, and Se-*B. longum* DD98 on levels of propionic acid (A), valeric acid (B), isovaleric acid (C) in mice feces. NC, normal control group; T2DM, model group; SS, sodium selenite group; BL, *B. longum* DD98 group; SeL, Se-*B. longum* DD98 low dosage group; SeH, Se-*B. longum* DD98 high dosage group. Values are expressed as mean \pm SD (n = 8). ^{a-d} Means with different letters differ significantly for the same SCFA in feces after different treatments ($p < 0.05$).