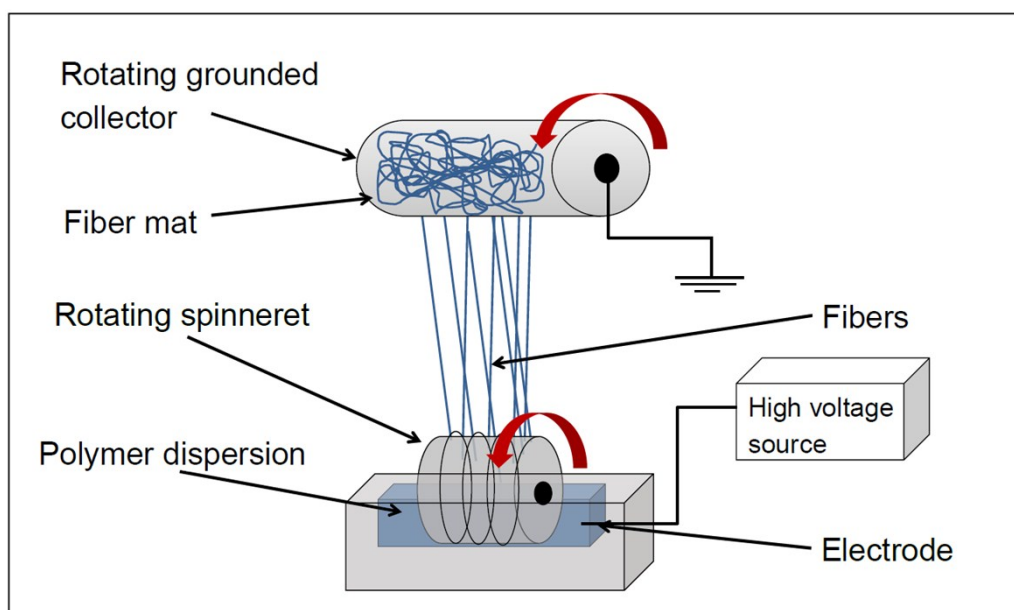
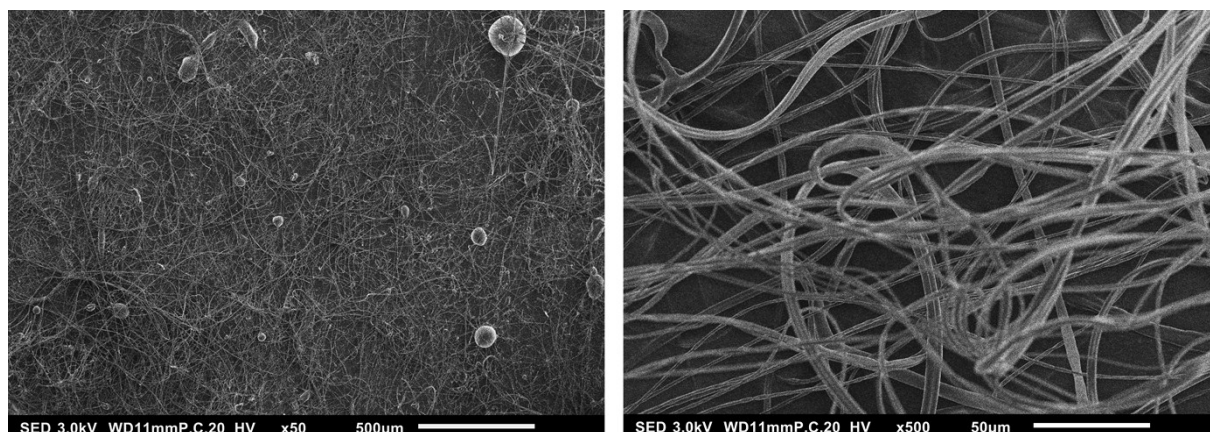


## Electronic Supplementary Material



**Figure A.1:** Schematic drawing of the needleless electrospinning apparatus.



**Figure A.2:** Scanning electron micrographs of electrospun PPI-maltodextrin fibers recorded with a scanning electron microscope (JSM-IT100, JEOL USA, Inc., Peabody, USA) at a high vacuum and an acceleration voltage of 3 kV. Scale bar represents 500 μm in left image and 50 μm in right image.