

## SUPPLEMENTARY MATERIALS

### **Cytoprotective Effects of A Proprietary Red Maple Leaves Extract and Its Major Polyphenol, Ginnalin A, against Hydrogen Peroxide and Methylglyoxal Induced Oxidative Stress in Human Keratinocytes**

Chang Liu<sup>b</sup>, Hao Guo<sup>b,c,d</sup>, Joel A. Dain<sup>e</sup>, Yinsheng Wan<sup>d</sup>, Xing-Hua Gao<sup>c</sup>, Hong-Duo Chen<sup>c</sup>, Navindra P. Seeram<sup>b\*</sup>, Hang Ma<sup>a,b\*</sup>

<sup>a</sup>School of Chemical and Environment Engineering, Wuyi University; International Healthcare Innovation Institute (Jiangmen), Jiangmen 529020, Guangdong, China

<sup>b</sup>Bioactive Botanical Research Laboratory, Department of Biomedical and Pharmaceutical Sciences, College of Pharmacy, University of Rhode Island, Kingston, RI 02881, USA

<sup>c</sup>Department of Dermatology, Key Laboratory of Immunodermatology, No.1 Hospital of China Medical University, Shenyang, China

<sup>d</sup>Department of Biology, Providence College, Providence, RI 02918, USA

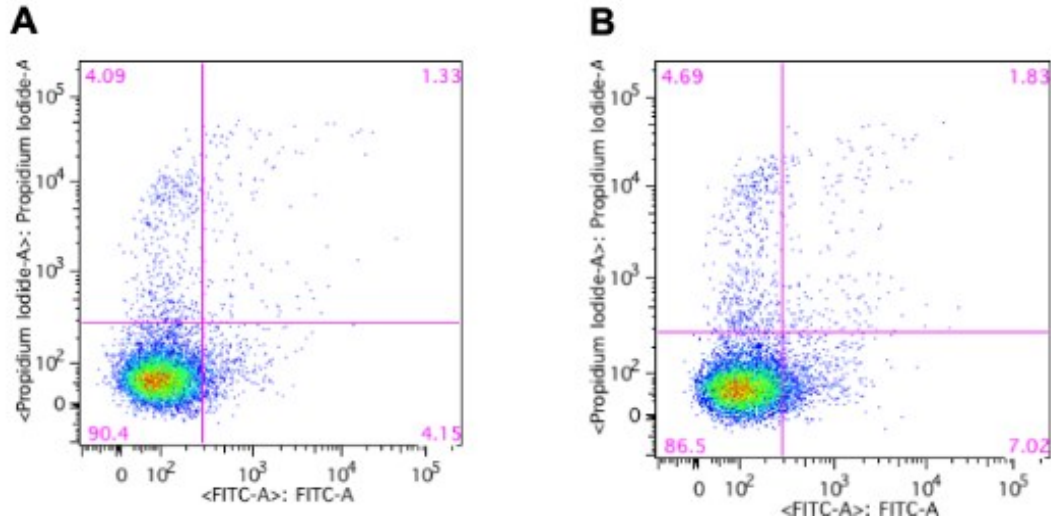
<sup>e</sup>Department of Chemistry, University of Rhode Island, Kingston, RI 02881, USA

*\*Corresponding authors*

Tel.: +1 401 874 9367; E-mail address: nseeram@uri.edu (N.P.S.)

Tel.: +1 401 874 7654; E-mail address: hang\_ma@uri.edu (H.M.)

7 Greenhouse Road, Kingston, RI 02881 USA, The University of Rhode Island



**Figure S1:** Effects of MGO on the apoptosis of HaCaT cells. The apoptotic cell populations (annexin V+/PI– and annexin V+/PI+) of HaCaT cells with the treatments of MGO (400  $\mu$ M) were quantified by gated patterns in double stains. (A) Control group (without treatment of MGO); (B) treatment of MGO (400  $\mu$ M). HaCaT cells were seeded in 6-well plates at 300000 cells per well and allowed to attach for 12 h followed by treatment of MGO for 6 h. Medium was then removed and cells were washed twice with phosphate buffer solution. Next, cells were treated with MGO (400  $\mu$ M) and incubated for 24 h. Cells were then harvested and suspended in 500  $\mu$ L of binding buffer containing 5  $\mu$ L of FITC-labeled Annexin-V and 5  $\mu$ L of propidium iodide (PI) followed by incubation in the dark for 15 min. Then the population of apoptotic and necrotic cells were measured by flow cytometry.