

Supplementary information

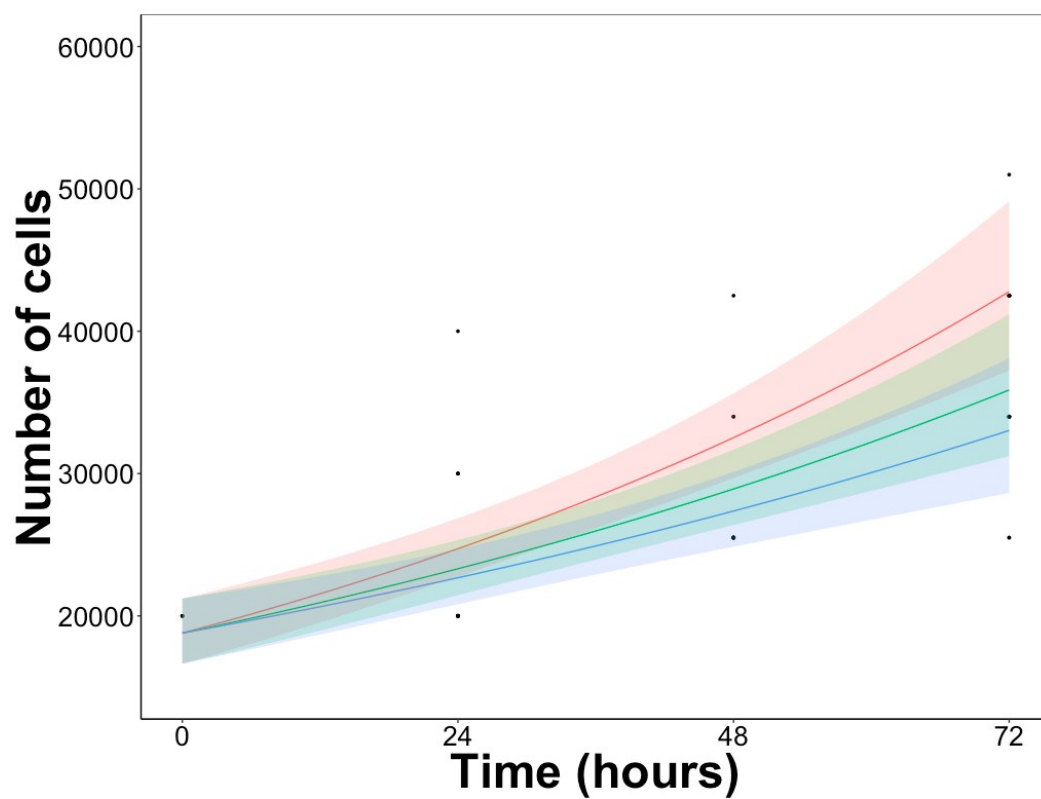


Fig. S1 CCD841 cells proliferation (see Fig. 2 for details).

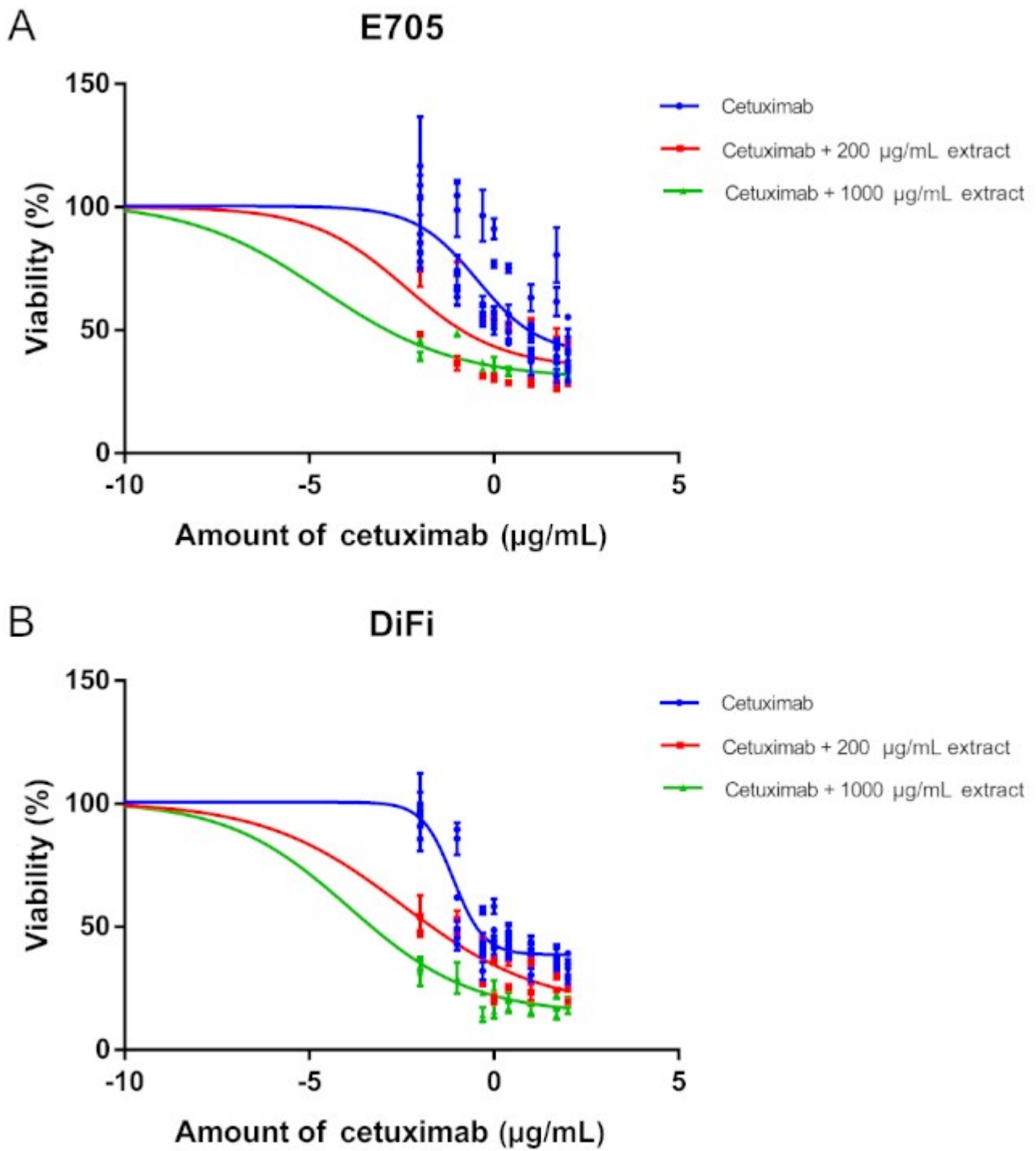


Fig. S2 Dose-response curves of E705 (A) and DiFi (B) with drug alone and drug plus two concentrations of extract.

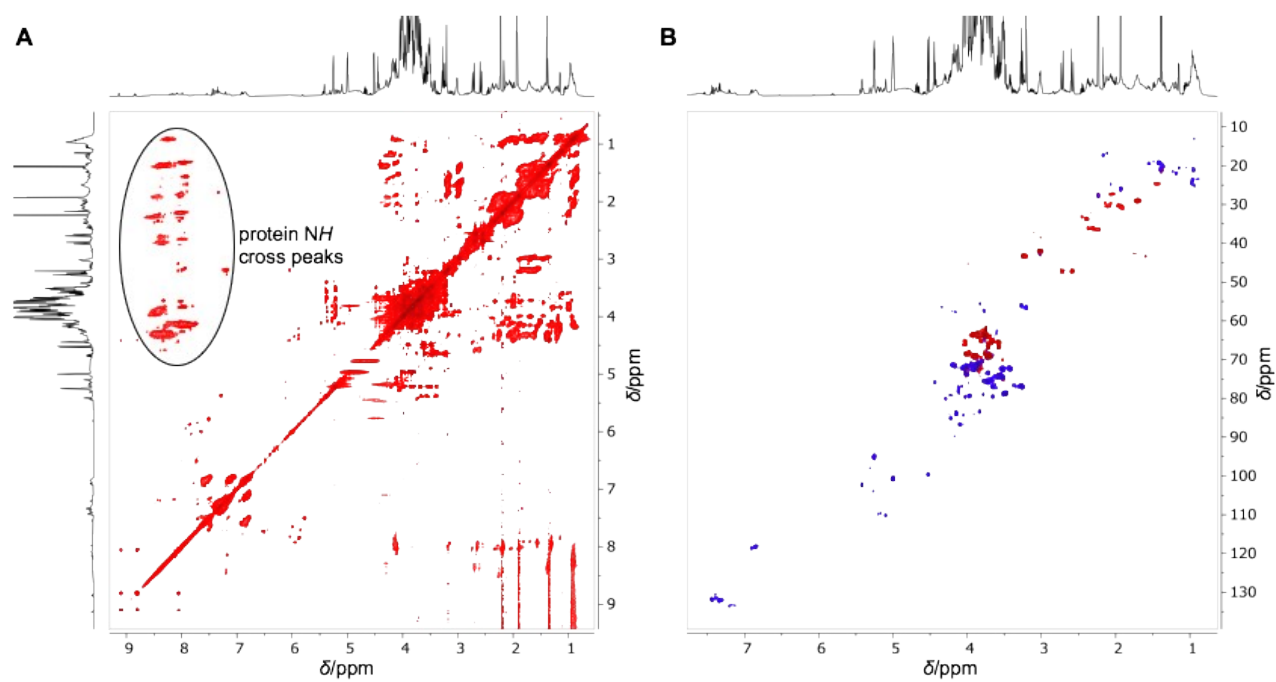


Fig. S3 ^1H - ^1H -TOCSY (A) and ^1H - ^{13}C HSQC (B) spectra of a total cowpea water boiled seed extract sample dissolved in $\text{H}_2\text{O}:\text{D}_2\text{O}$ 9:1 at a final concentration of 10 mg/mL (TSP 0.5 mM, 25 °C).

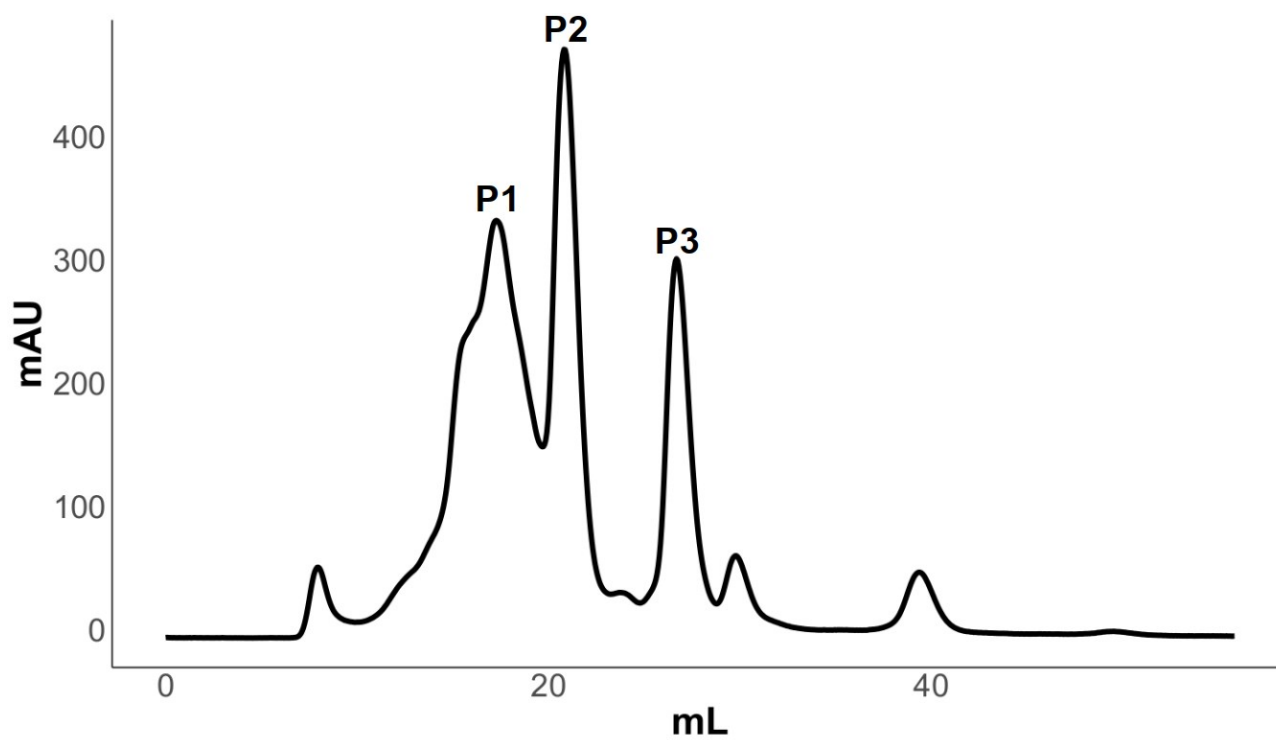


Fig. S4 FPLC profile of the purified extract.