

Supplementary information

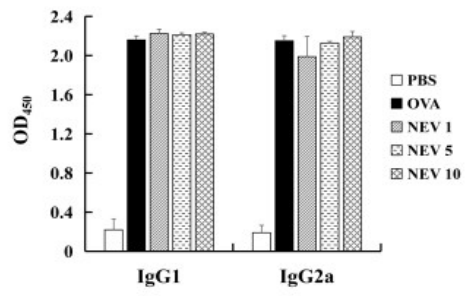
Figure legends

Figure S1. Effects of NEV on the levels of specific antibodies and cytokines.

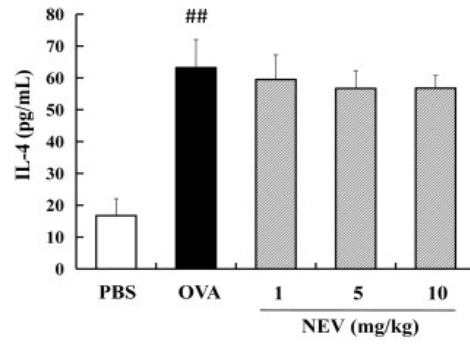
- A. The effect of daily treatment with NEV on serum OVA-specific IgG1 and IgG2a. Serum from eyeballs was collected on day 41.
- B. The effect of daily treatment with NEV on serum IL-4. Serum from eyeballs was collected on day 41.
- C. The effect of daily treatment with NEV on serum IFN- γ . Serum from eyeballs was collected on day 41.
- D. The effect of daily treatment with NEV on serum IL-10. Serum from eyeballs was collected on day 41. [#] $P < 0.05$, ^{##} $P < 0.01$ for the PBS group compared with the OVA group. The data represent the mean \pm SD.

Figure S1

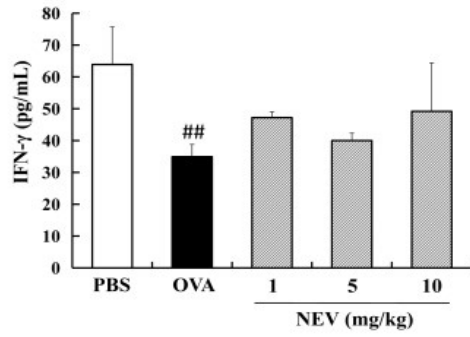
A



B



C



D

