

**Supplementary information**

**A new purification method based on thiol silica column for high  
precision antimony isotopes measurements**

Shuyang Li,<sup>a,b</sup> Yanli Deng,<sup>a</sup> Hongtao Zheng,<sup>a,b</sup> Xing Liu,<sup>a</sup> Peidong Tang<sup>c</sup>,  
Jianwei Zhou and Zhenli Zhu\*<sup>a</sup>

<sup>a</sup>State Key Laboratory of Biogeology and Environmental Geology, China University of  
Geosciences, Wuhan, China, 430074

<sup>b</sup>Faculty of Material Science and Chemistry, China University of Geosciences, Wuhan,  
China, 430074

<sup>c</sup>School of Environmental Studies, China University of Geosciences, Wuhan, China,  
430074

**Corresponding author:** Zhenli Zhu

**Postal address:** State Key Laboratory of Biogeology and Environmental Geology,  
China University of Geosciences, Wuhan, China, 430074

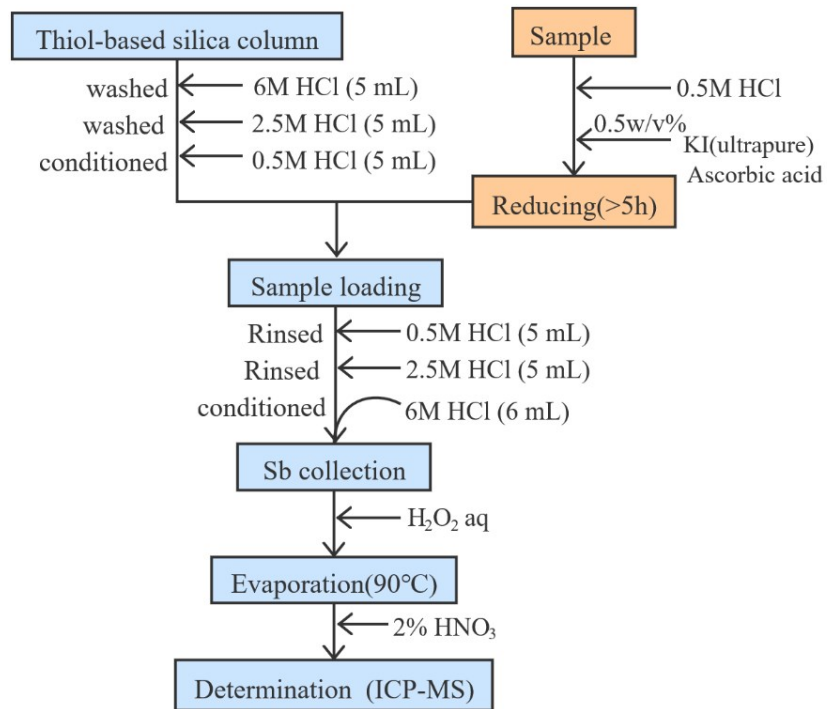
**Tel:** +86 27 67883452

**Fax:** +86 27 67883456

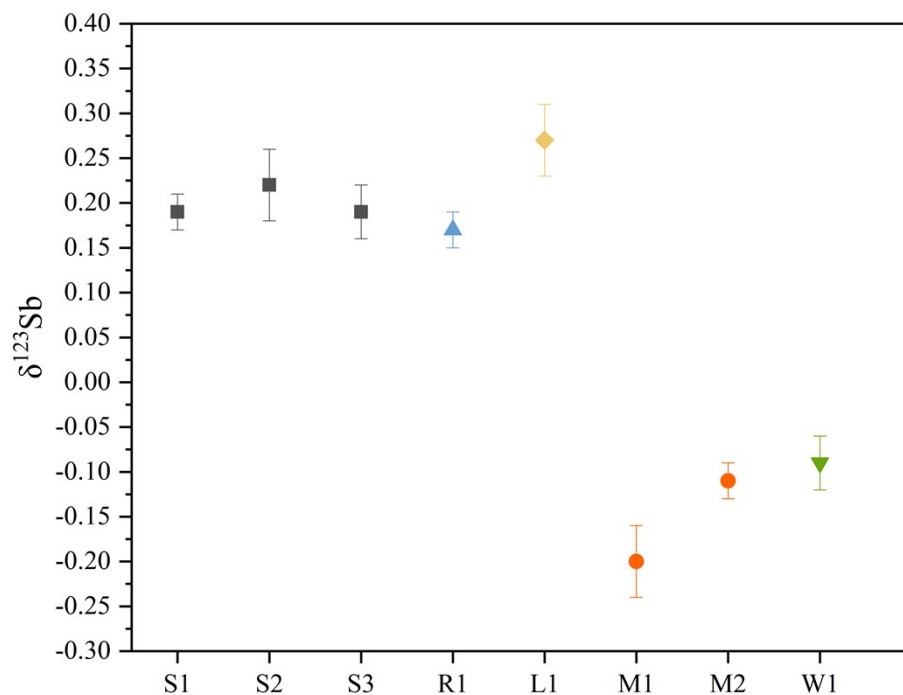
**E-mail:** [zhuzl03@gmail.com](mailto:zhuzl03@gmail.com), [zlzhu@cug.edu.cn](mailto:zlzhu@cug.edu.cn)

**Figure S1:** Flow diagram of the proposed method for antimony preconcentration .....2

**Figure S2:**  $\delta^{123}\text{Sb}$  of water samples collected from Xikuangshan Antimony mine of  
Hunan Province. The errors (2SD) are calculated based on three replicates .....2



**Figure S1.** Flow diagram of the proposed method for antimony preconcentration.



**Figure S2.**  $\delta^{123}\text{Sb}$  of water samples collected from Xikuangshan Antimony mine of Hunan Province. The errors (2SD) are calculated based on three replicates.