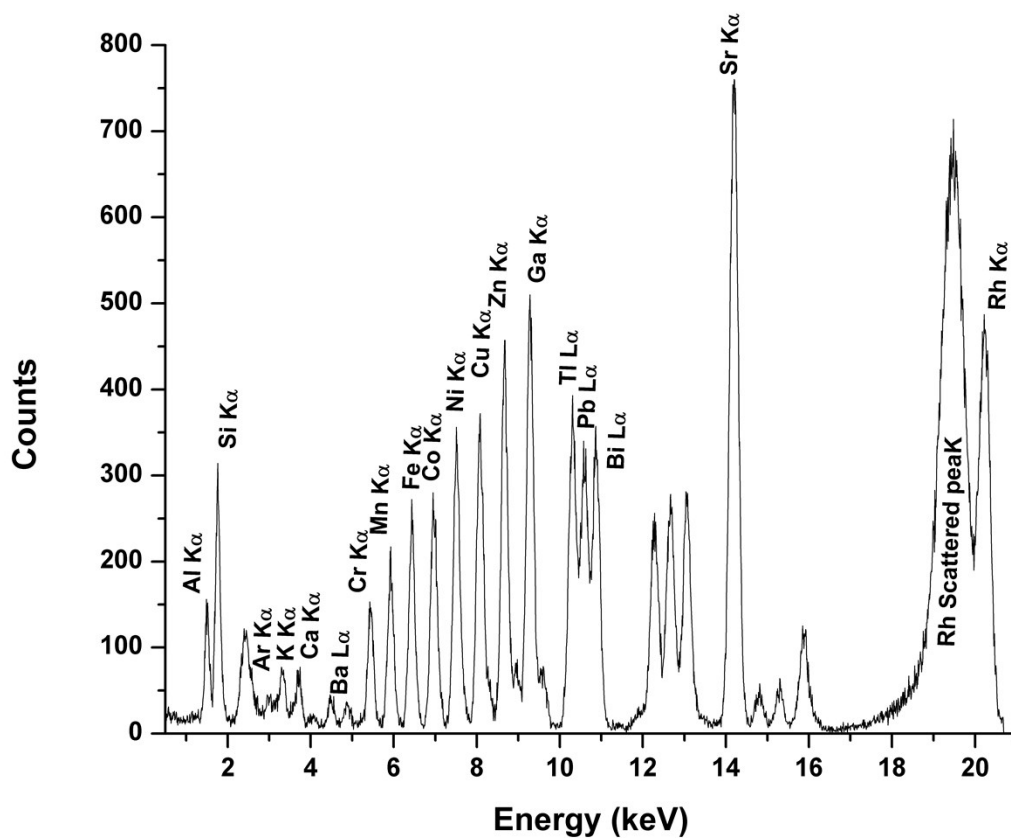


Electronic Supplimentary Information



TXRF spectrum of MES having analyte concentration of 2 $\mu\text{g}/\text{mL}$ in Al matrix having concentration of 1000 $\mu\text{g}/\text{mL}$

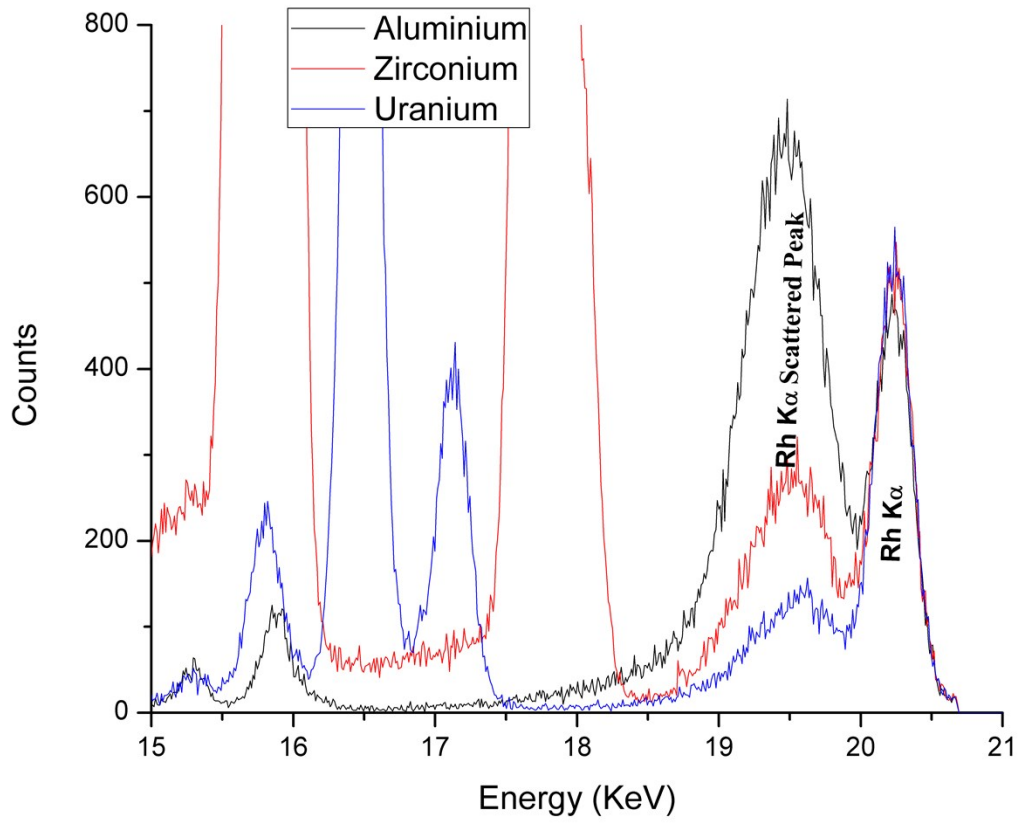


Figure showing the drastic decrease in the Compton intensity with increasing atomic number of the matrix and the matrix effect is especially visible with that peak.