

## Supplementary Materials

### **Deep-LUMEN Assay – Human epithelial spheroid localization and classification using deep learning**

Lyan Abdul<sup>1</sup>, Shravanthi Rajasekar<sup>2</sup>, Dawn S.Y. Lin<sup>2</sup>, Sibi Venkatasubramania Raja<sup>3</sup>, Alexander Sotra<sup>2</sup>, Yuhang Feng<sup>3</sup>, Amy Liu<sup>3</sup>, and Boyang Zhang<sup>2,4\*</sup>

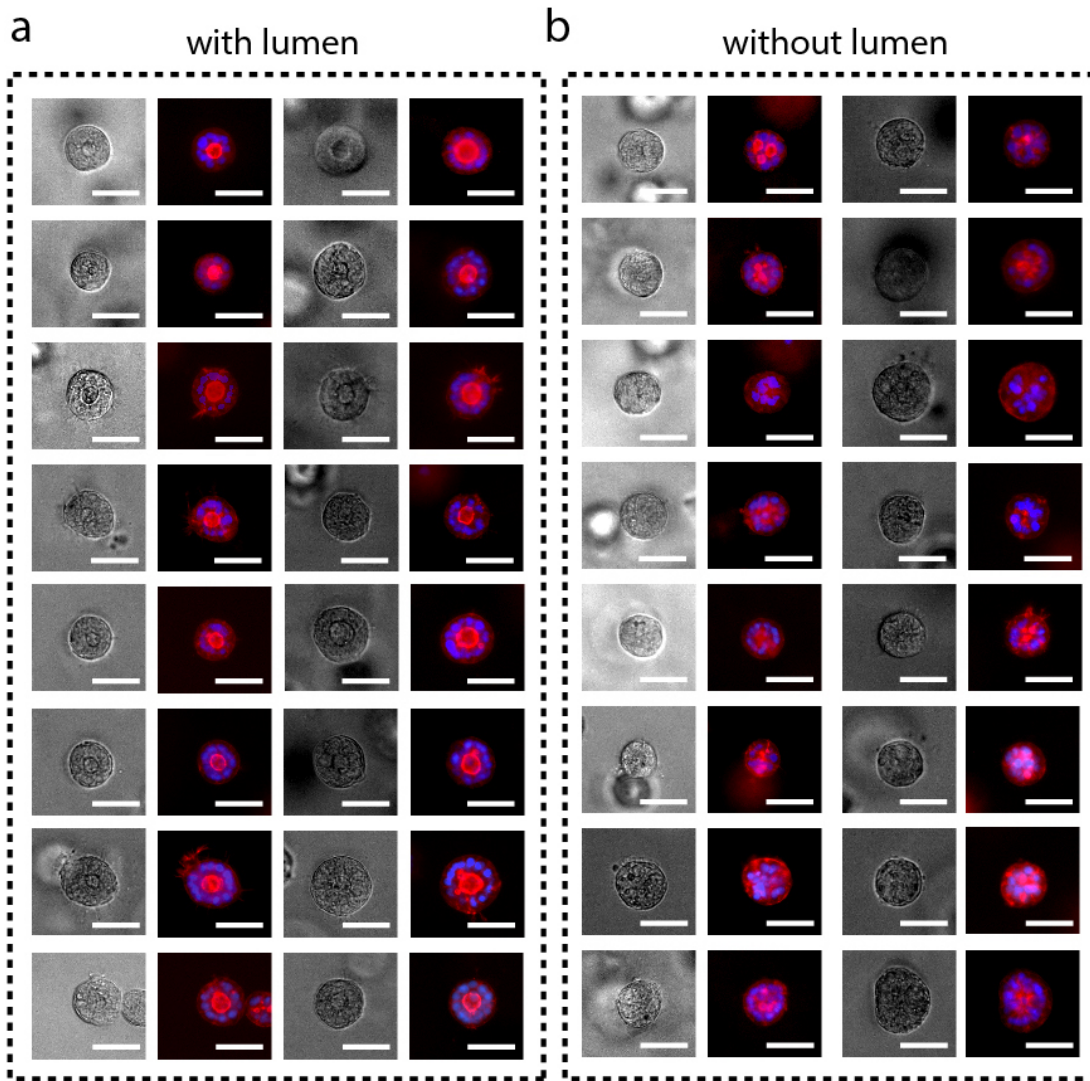
<sup>1</sup>School of Interdisciplinary Science, McMaster University 1280 Main Street West, Hamilton, ON, L8S 4K1, Canada

<sup>2</sup>Department of Chemical Engineering, McMaster University, 1280 Main Street West, Hamilton, ON, L8S 4L8, Canada

<sup>3</sup>Faculty of Health Sciences, McMaster University 1280 Main Street West, Hamilton, ON, L8S 4L8, Canada

<sup>4</sup>School of Biomedical Engineering, McMaster University, 1280 Main Street West, Hamilton, ON, L8S 4L8, Canada

\*Correspondence to [zhangb97@mcmaster.ca](mailto:zhangb97@mcmaster.ca)



**Supplementary Figure 1. Immunofluorescent staining of polarized and non-polarized lung spheroids. a-b,** Fluorescent staining of (a) polarized spheroids referred to as “lumen” (representative images n = 6 samples) and (b) non-polarized spheroids referred to as “no lumen”. Spheroids were stained for F-actin (red) and DAPI (blue). Scale bar, 50  $\mu\text{m}$ .