

Ag and Mn-doped mesoporous bioactive glass nanoparticles incorporated into the chitosan/gelatin coatings deposited on PEEK/bioactive glass layer for favorable osteogenic differentiation and antibacterial activity

Supplementary File

Figure S1:

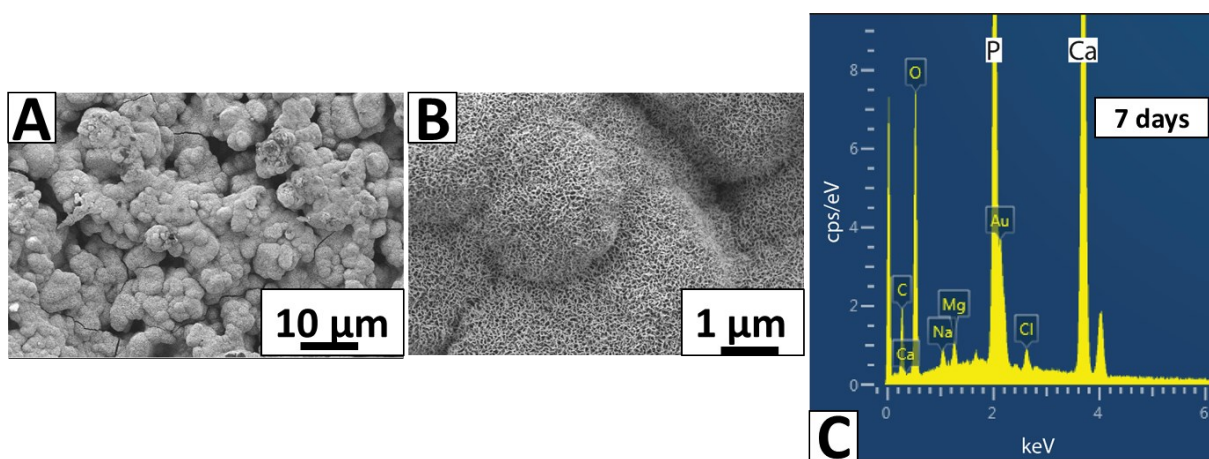


Figure S1. SEM images of the chitosan/gelatin/Ag-Mn MBNs composited coating on PEEK/BG layers after immersion in SBF for 7 days; (A) low magnification image, (B) higher magnification image, and (C) EDX analysis after 7 days of treatment in SBF.

Figure S2:

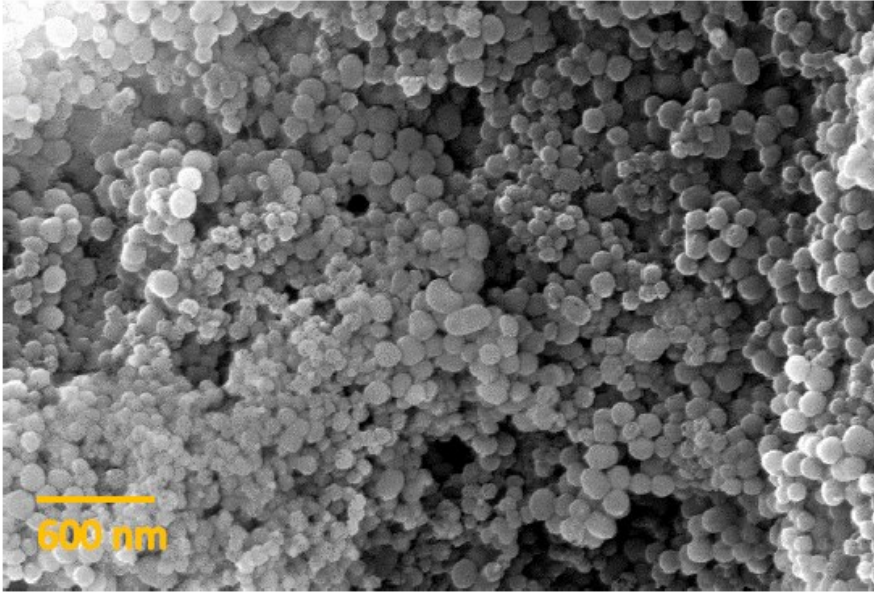


Figure S2. SEM images of the chitosan/gelatin/Ag-Mn MBNs composited coating on 316L SS after 7 days of immersion in SBF, showing no signs of bioactivity i.e HA crystal formation on the surface of the coatings.