

Supporting information

Mechanical, thermal, and microstructural analyses of thermoplastic poly(2-methoxyethyl acrylate)-based polyurethane by RAFT and polyaddition

Shunsuke Tazawa ^a, Tomoki Maeda ^{a,b*} and Atsushi Hotta ^{a*}

E-mail: hotta@mech.keio.ac.jp

tomoki.maeda.polymer@vc.ibaraki.ac.jp

^a *Department of Mechanical Engineering, Keio University
3-14-1 Hiyoshi, Kohoku-ku, Yokohama 223-8522, Japan*

^b *Frontier Research Center for Applied Atomic Sciences, Ibaraki University
162-1 Shirakata, Tokai-mura, Naka-gun, Ibaraki 319-1106, Japan*

Size exclusive chromatography (SEC) of the synthesized PMEAs

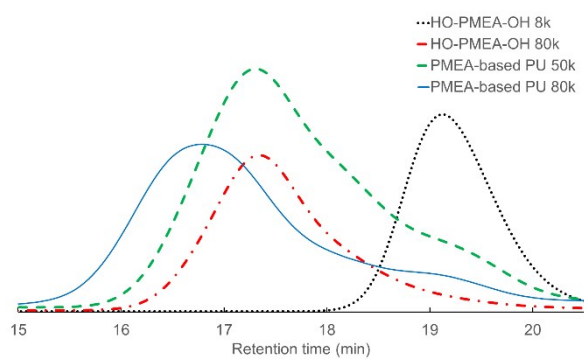


Figure S1. SEC curves of HO-PMEA-OH and PMEAs-based PU

Dynamic mechanical analysis (DMA)

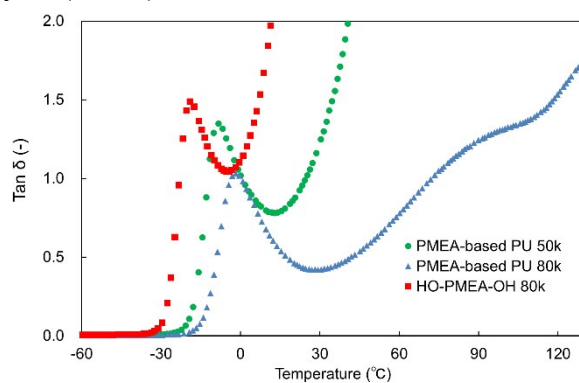


Figure S2. Loss tangent results of HO-PMEA-OH and PMEAs-based PU

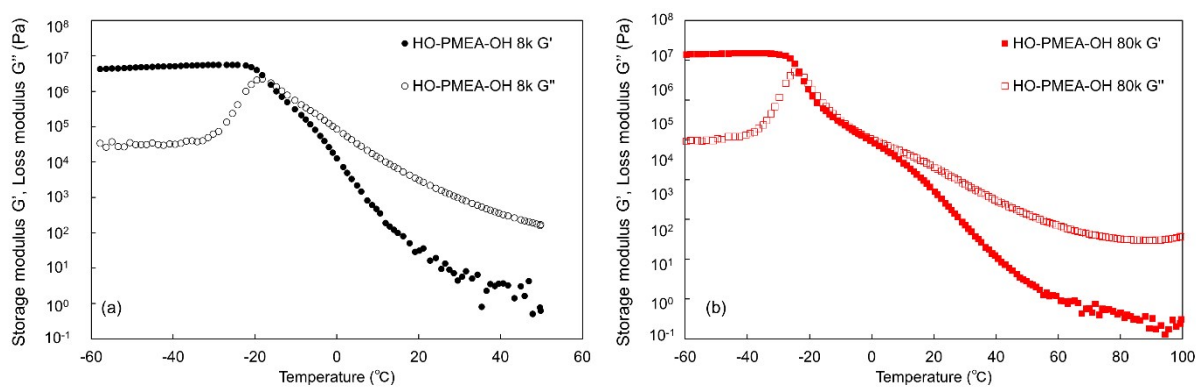


Figure S3. DMA curves of HO-PMEA-OH: (a) HO-PMEA-OH 8k and (b) HO-PMEA-OH 80k

Thermogravimetric analysis (TGA) of HO-PMEA-OH

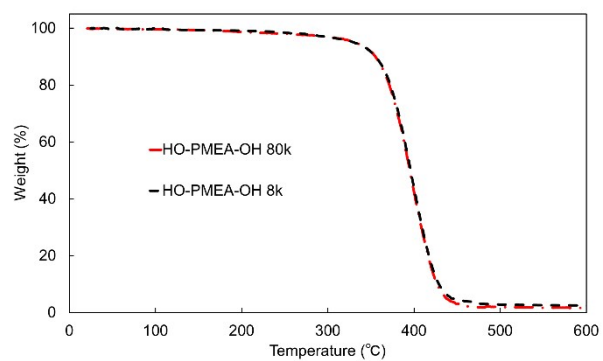


Figure S4. TGA curves of HO-PMEA-OH