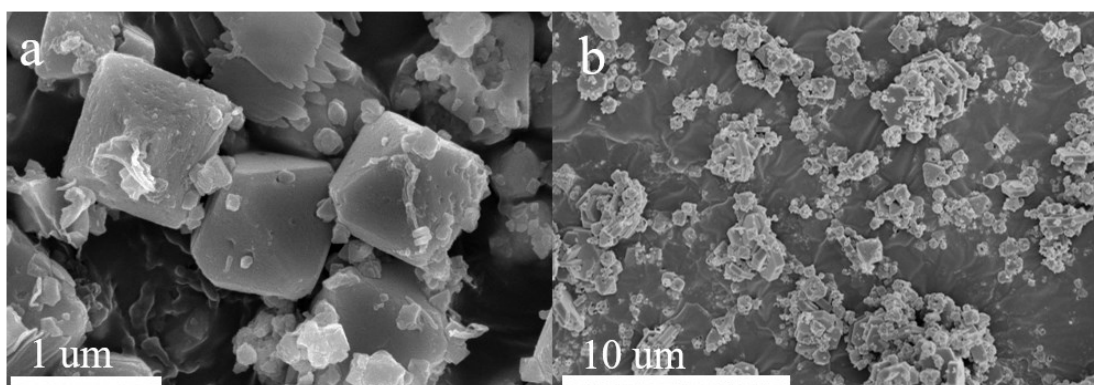


**Facile assembly and improved photocatalytic activity of a special cuprous  
oxide/copper fluoride heterojunction induced by graphene oxide**

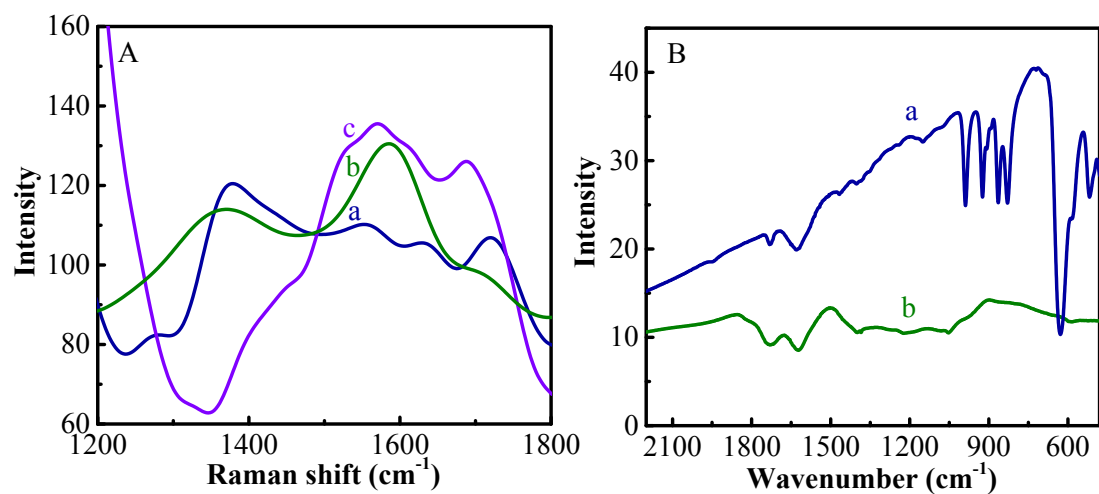
Mengya Xi, Wanru Zhang, Zhiyuan Liu, Lixia Qin, Shi-Zhao Kang, Xiangqing Li\*

School of Chemical and Environmental Engineering, Center of Graphene Research,  
Shanghai Institute of Technology, 100 Haiquan Road, Shanghai 201418, China

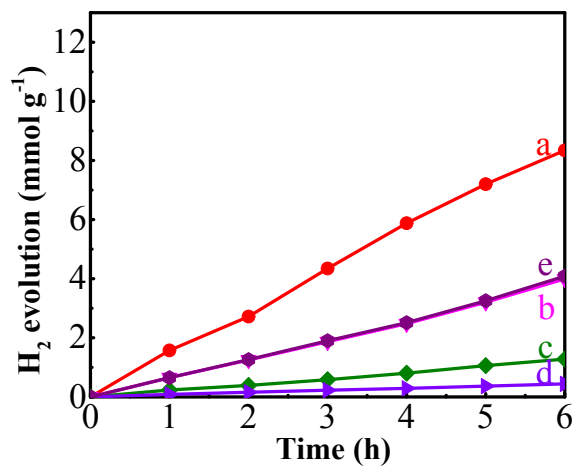
\*E-mail address: xqli@sit.edu.cn (Xiangqing Li)



**Fig. S1** SEM images of (a) Cu<sub>2</sub>O/GO and (b) Cu<sub>2</sub>O/CuF<sub>2</sub> (simple mixed).



**Fig. S2** (A) Raman spectra of samples; (B) FTIR spectra of samples. Cu<sub>2</sub>O (a), GO (b), and CuF<sub>2</sub> (c).



**Fig. S3** Amount of H<sub>2</sub> evolved over the as-prepared Cu<sub>2</sub>O/GO (a), Cu<sub>2</sub>O (b), GO (c), CuF<sub>2</sub> (d) and Cu<sub>2</sub>O/CuF<sub>2</sub> (simply mixed) (e).