

Current Data Parameters  
 NAME AMMP88-AA  
 EXPNO 24  
 PROCNO 1

ppm

F2 - Acquisition Parameters

Date\_ 20200611

Time\_ 15.20

INSTRUM spect

PROBHD 5 mm PABBO BB/

PULPROG noesy9pphnp

TD 2048

SOLVENT CDCl3

NS 4

DS 32

SWH 3267.974 Hz

FIDRES 1.595690 Hz

AQ 0.313340 sec

RG 63.89

DW 153.000 usec

DE 6.50 usec

TE 298.0 K

D0 0.00014059 sec

D1 1.94265604 sec

D8 0.30000001 sec

D11 0.03000000 sec

D12 0.00002000 sec

D16 0.00020000 sec

IN0 0.00030600 sec

===== CHANNEL f1 =====

SFO1 400.1916405 MHz

NUC1 1H

P1 9.75 usec

P2 19.50 usec

P17 2500.00 usec

PLM1 15.00000000 W

PLM10 2.10940003 W

===== GRADIENT CHANNEL =====

GPM1 1 SMSQ10.100

GP21 40.00 %

P16 1000.00 usec

F1 - Acquisition Parameters

TD 256

SFO1 400.1916 MHz

FIDRES 12.765323 Hz

SW 8.166 ppm

ENMODE States-TPPI

F2 - Processing parameters

SI 1024

SF 400.1900091 MHz

WDW QSINE

SSB 2

LB 0 Hz

GB 1.00

PC

F1 - Processing parameters

SI 1024

MC2 States-TPPI

SF 400.1900091 MHz

WDW QSINE

SSB 2

LB 0 Hz

GB

8

7

6

5

4

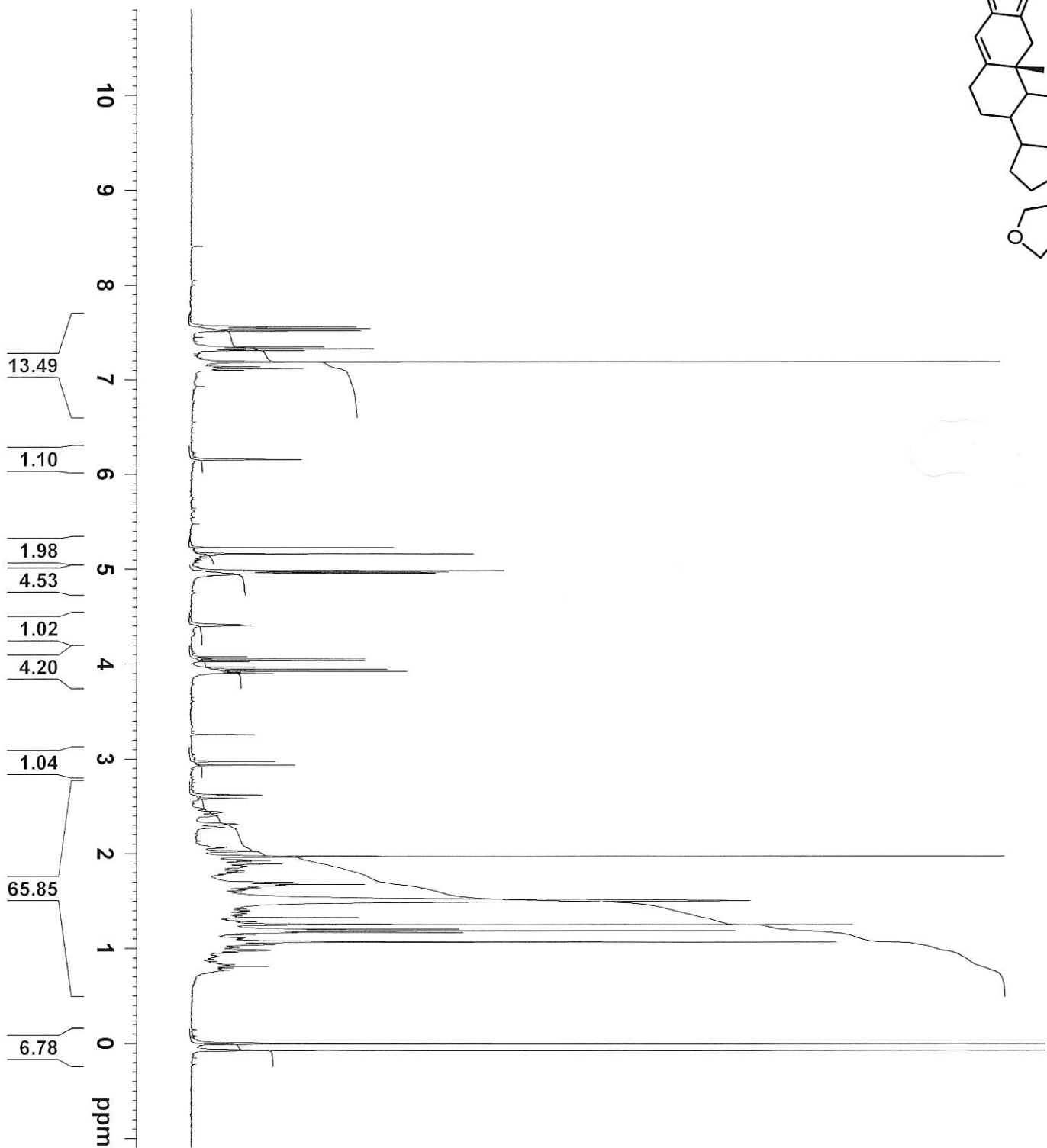
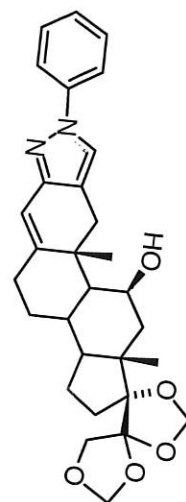
3

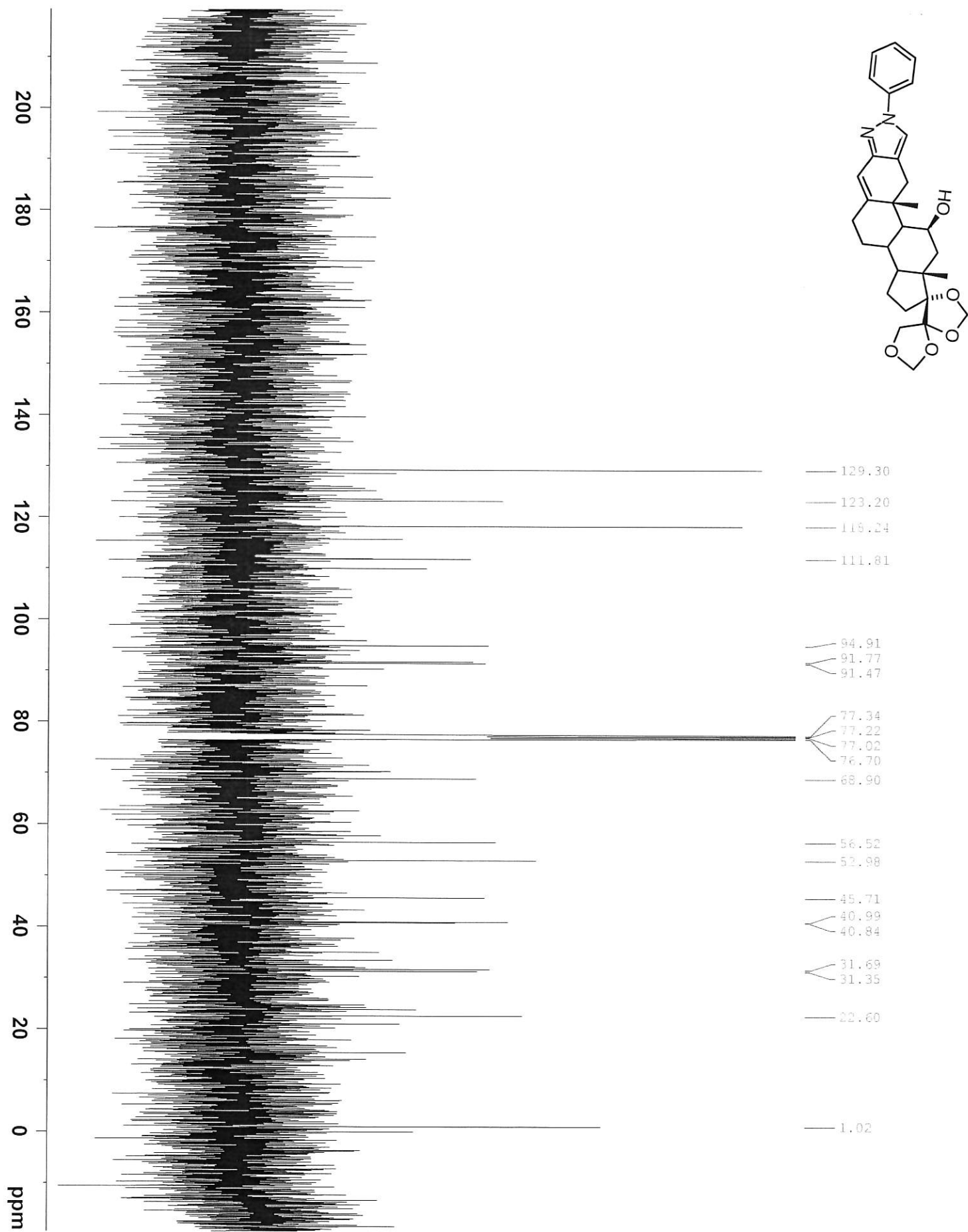
2

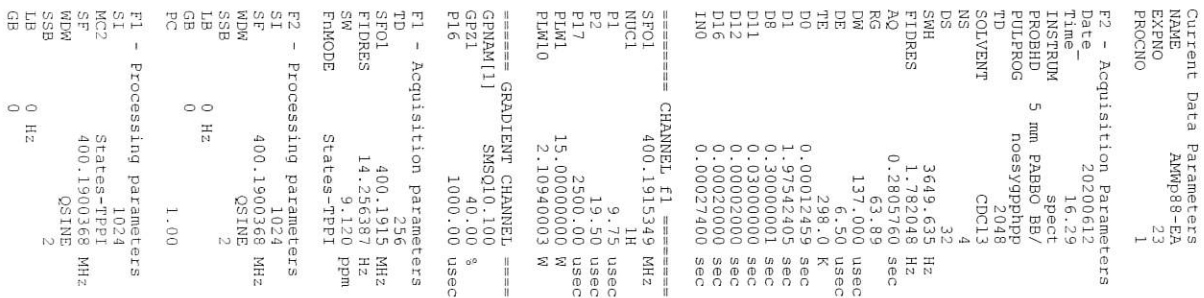
1

ppm

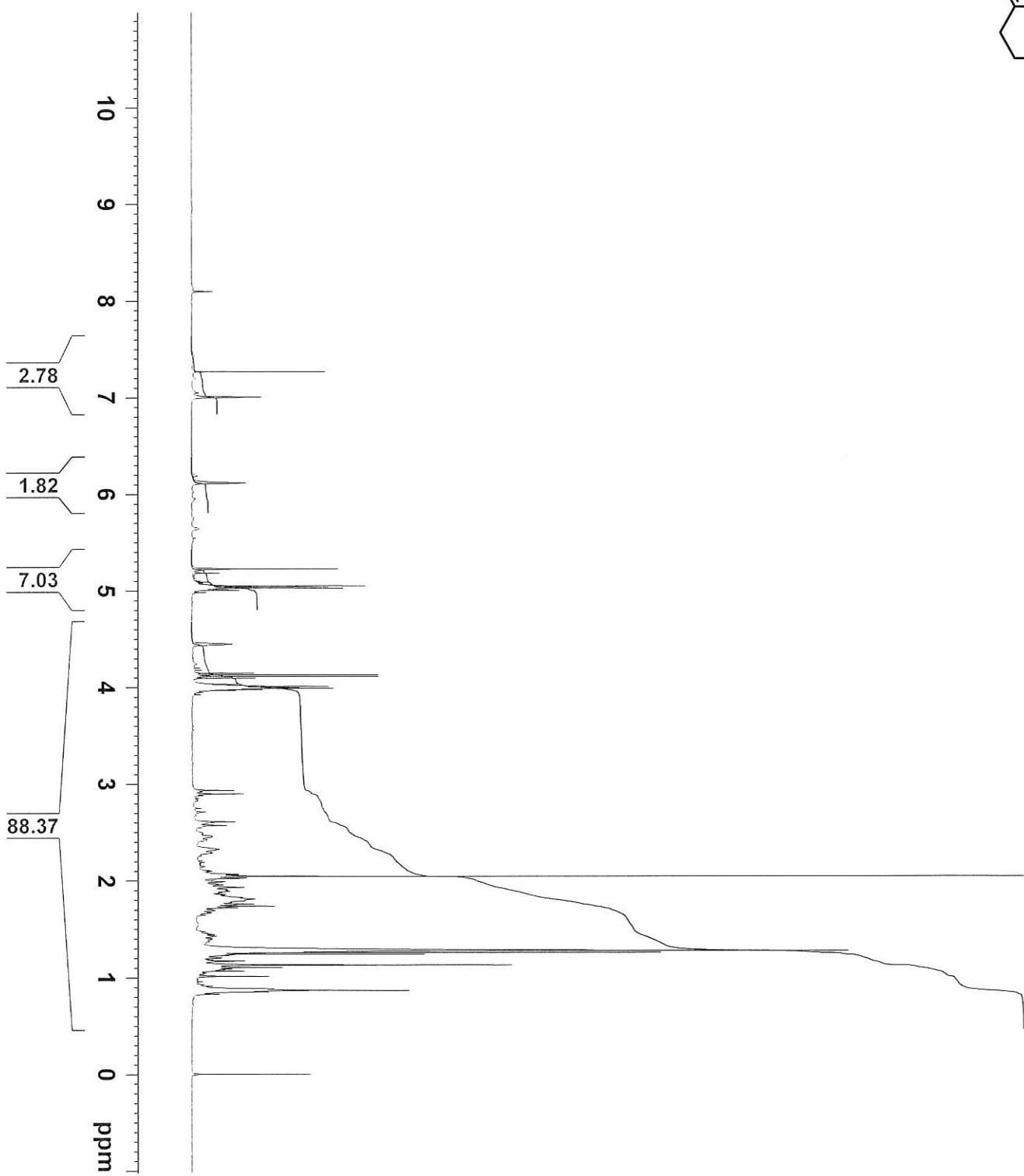
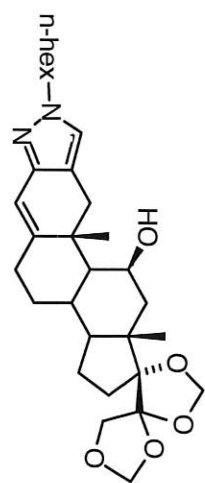


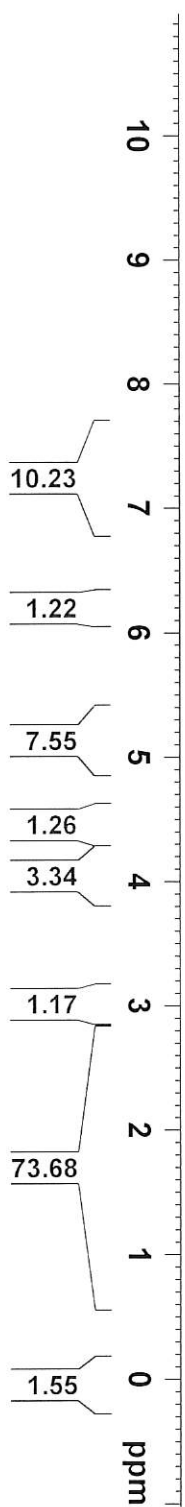
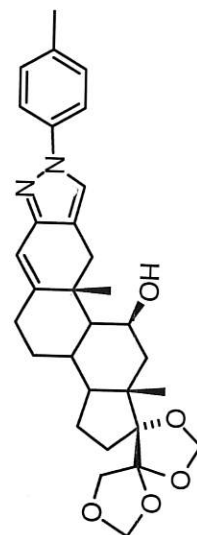


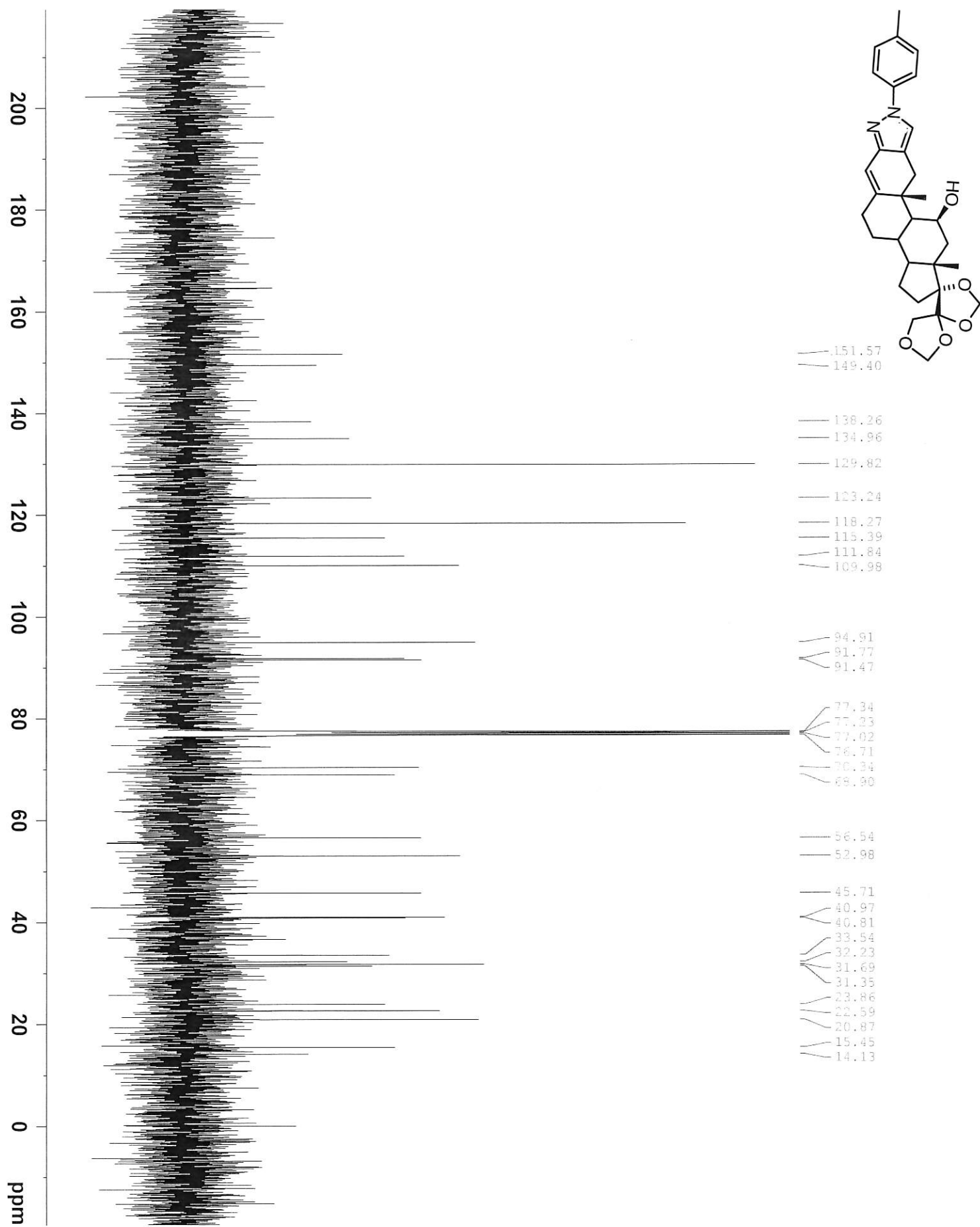


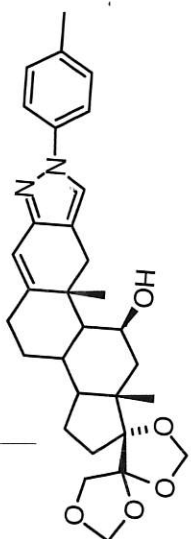












Current Data Parameters  
NAME AMMP88-CA  
EXPNO 23  
PROCNO 1

F2 - Acquisition Parameters  
Date\_ 20200612

Time 14.36

INSTRUM spect

PROBHD 5 mm PABO BB/

PULPROG noesygpphnp

TD 2048

SOLVENT CDCl3

NS 4

DS 32

SWH 3355.705 Hz

FIDRES 1.638528 Hz

AQ 0.3031520 sec

RG 63.89

DW 149.000 usec

DE 6.50 usec

TE 298.0 K

D0 0.00013659 sec

D1 1.95084798 sec

D8 0.30000001 sec

D11 0.03000000 sec

D12 0.00002000 sec

D16 0.00020000 sec

IN0 0.00029800 sec

===== CHANNEL f1 =====

SFO1 400.1916869 MHz

NUC1 1H

P1 9.75 usec

P2 19.50 usec

P17 2500.00 usec

PLM1 15.00000000 W

PLM10 2.10940003 W

===== GRADIENT CHANNEL =====

GPM1 400.1916869 MHz

GP21 40.00 %

PL6 1000.00 usec

F1 - Acquisition Parameters

TD 256

SFO1 400.1917 MHz

FIDRES 13.108221 Hz

SW 8.385 ppm

EnMODE States-TPPI

F2 - Processing parameters

SI 1024

SF 400.1900085 MHz

WDW QSINE

SSB 2

LB 0 Hz

GB 0

PC 1.00

F1 - Processing parameters

SI 1024

MC2 States-TPPI

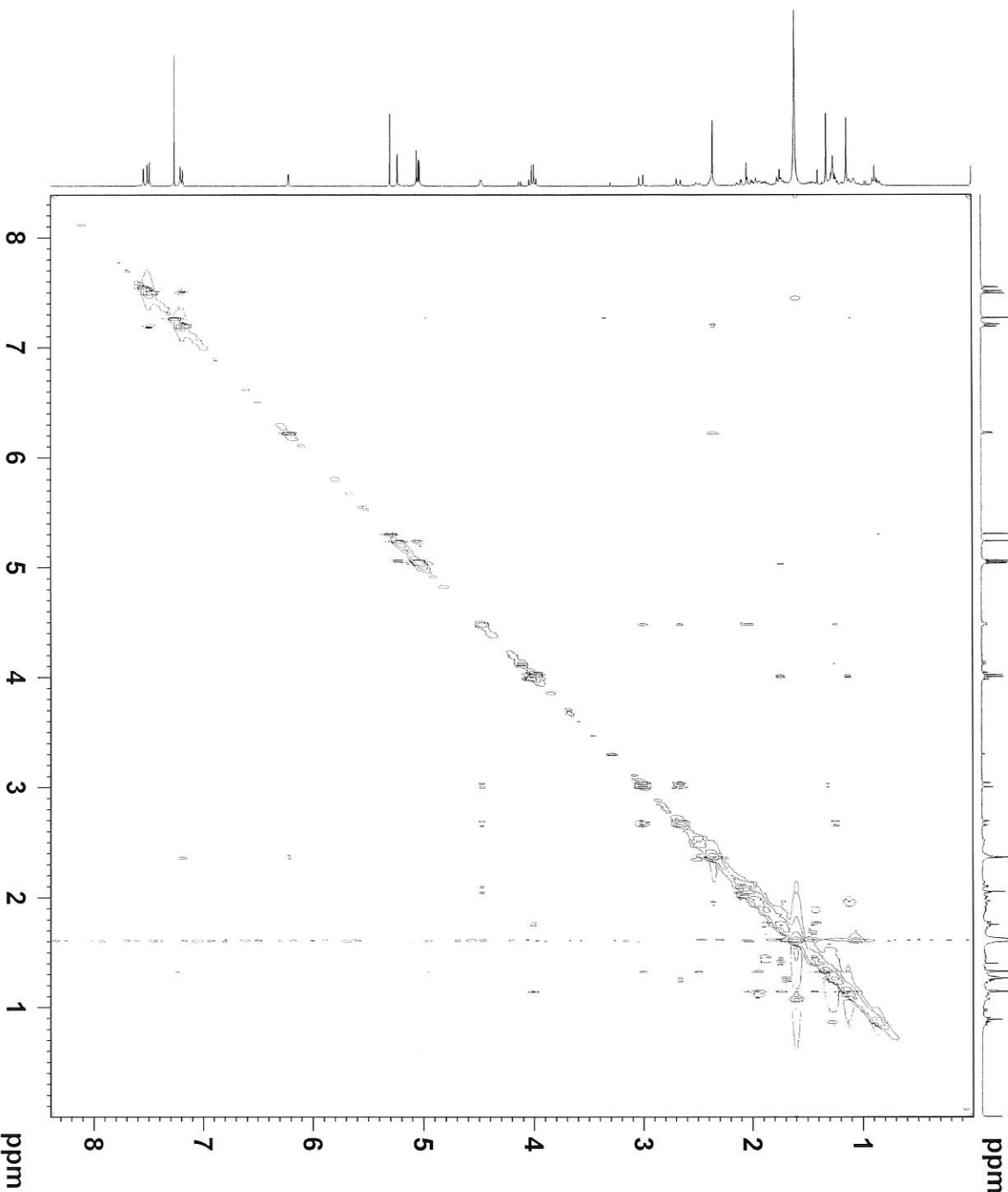
SF 400.1900085 MHz

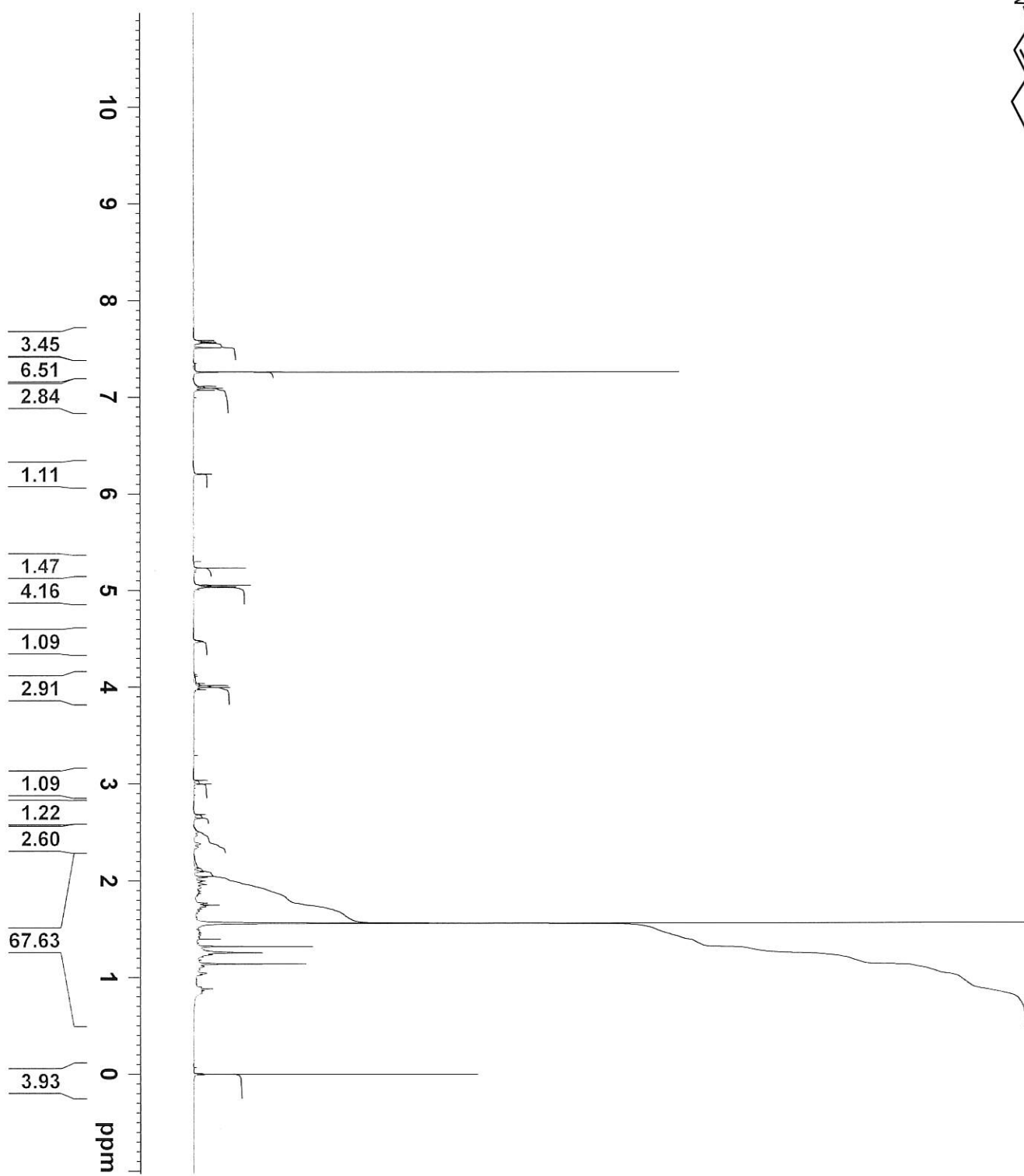
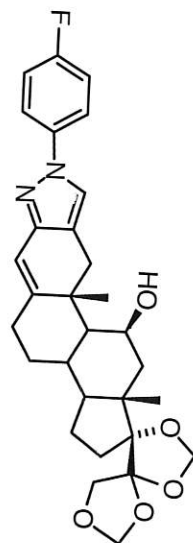
WDW QSINE

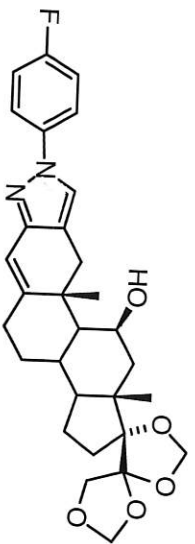
SSB 2

LB 0 Hz

GB 0







Current Data Parameters  
NAME AM088-BA  
EXNO 23  
PROCNO 1

F2 - Acquisition Parameters  
Date\_ 20200612  
Time\_ 18.22

INSTRUM 5 mm PABBO BB/  
PROBHD spect  
PULPROG noesypphnp  
TD 2048  
SOLVENT CDCl3  
NS 4  
DS 32

SRH 3184.713 Hz  
FIDRES 1.555036 Hz  
AQ 0.3215360 sec  
RG 63.89  
DW 157.000 usec  
DE 6.50 usec

TE 298.0 K  
DO 0.00014459 sec  
D1 1.93446398 sec  
D8 0.30000001 sec  
D11 0.03000000 sec  
D12 0.00002000 sec  
D16 0.00020000 sec  
INO 0.00031400 sec

===== CHANNEL f1 =====  
SF01 400.191646 MHz  
NUC1 1H  
P1 9.75 usec  
P2 19.50 usec  
P17 2500.00 usec  
PLM1 15.00000000 W  
PLM10 2.10940003 W

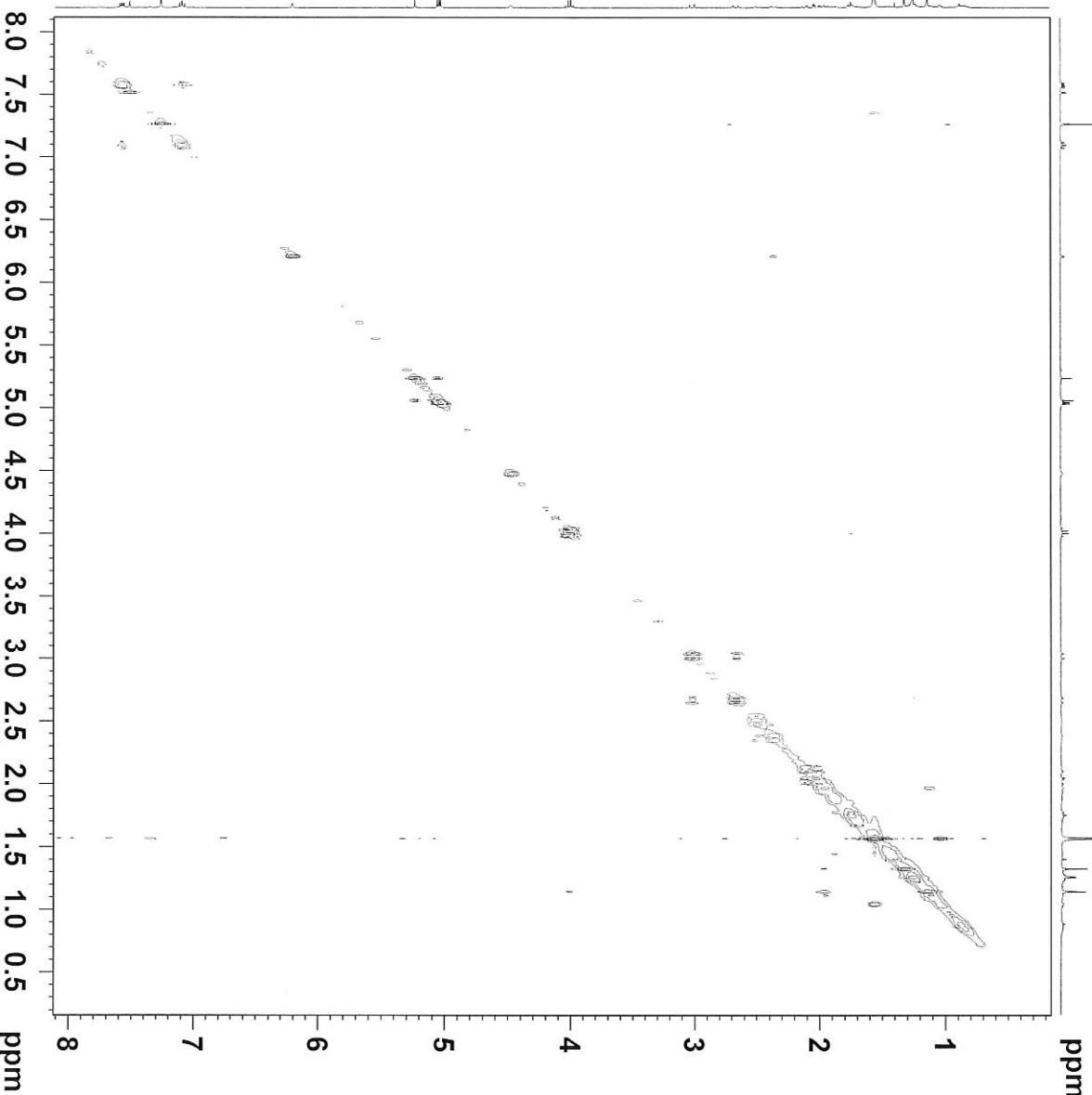
===== GRADIENT CHANNEL =====  
GPM1(1) SMSO10.100  
GP21 40.00 %  
P16 1000.00 usec

F1 - Acquisition Parameters  
TD 256  
SF01 400.1917 MHz  
FIDRES 12.440287 Hz  
SW 7.958 ppm  
FMOHE States-TPII

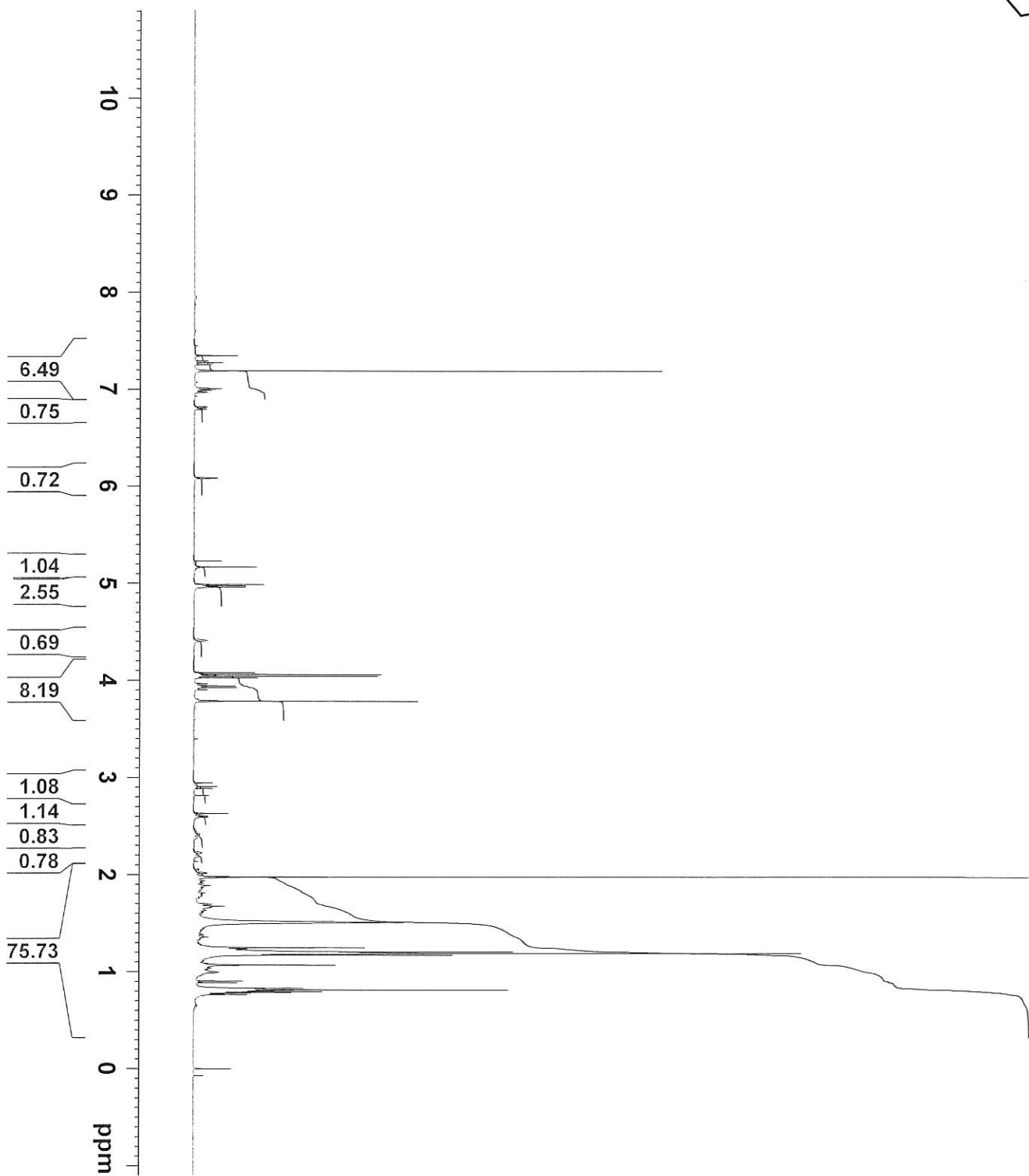
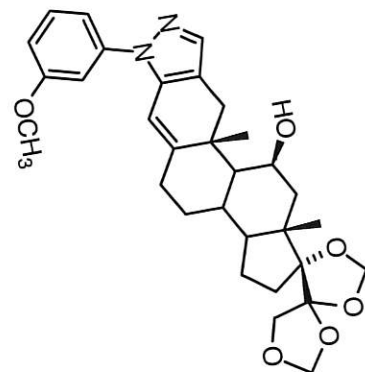
F2 - Processing Parameters  
SI 1024  
SF 400.190092 MHz  
WDW QSIINE  
SSB 2  
LB 0 Hz  
GB 0  
PC 1.00

F1 - Processing Parameters  
SI 1024  
MC2 States-TPII  
SF 400.190092 MHz  
WDW QSIINE  
SSB 2  
LB 0 Hz  
GB 0

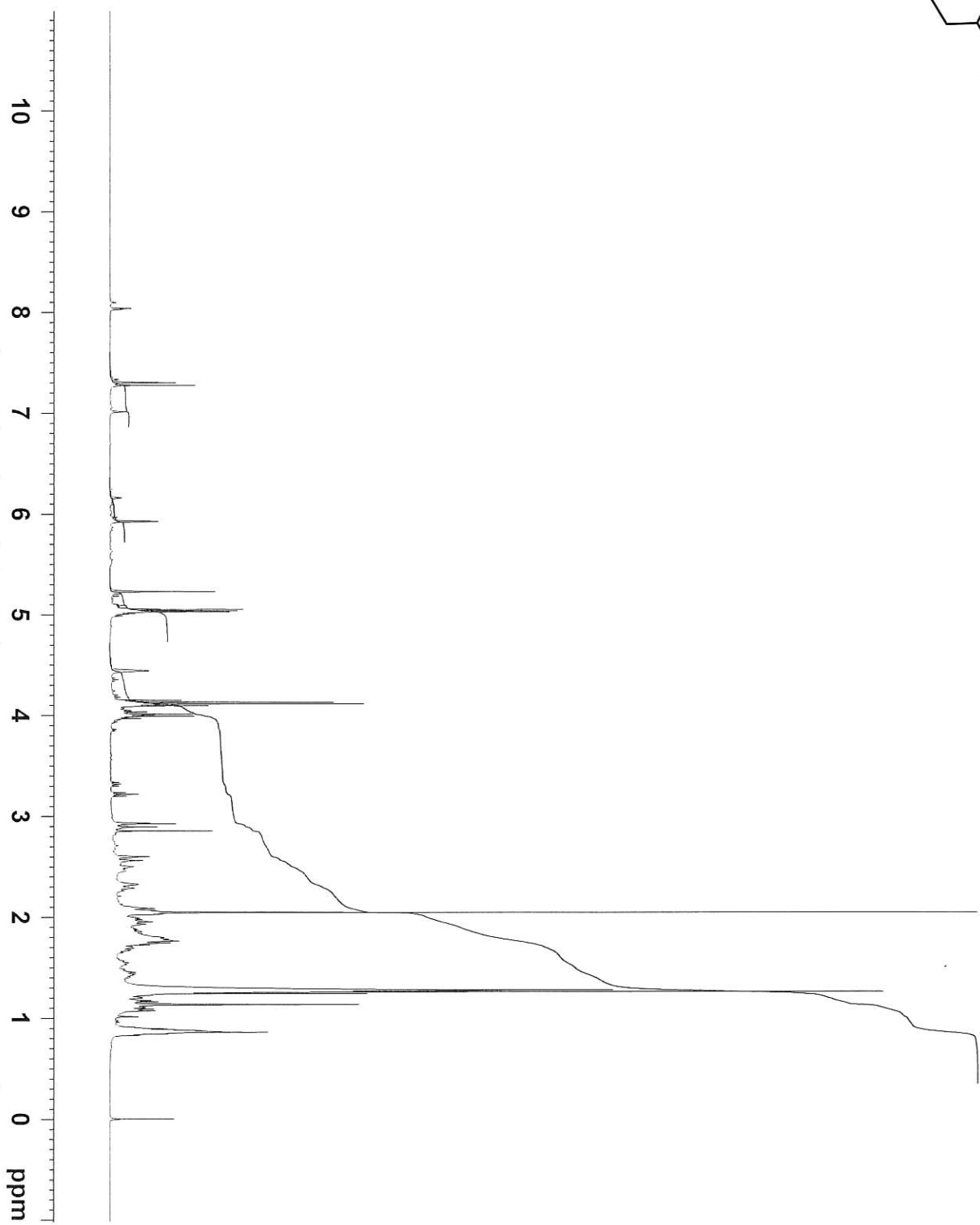
F1 - Processing Parameters  
SI 1024  
MC2 States-TPII  
SF 400.190092 MHz  
WDW QSIINE  
SSB 2  
LB 0 Hz  
GB 0

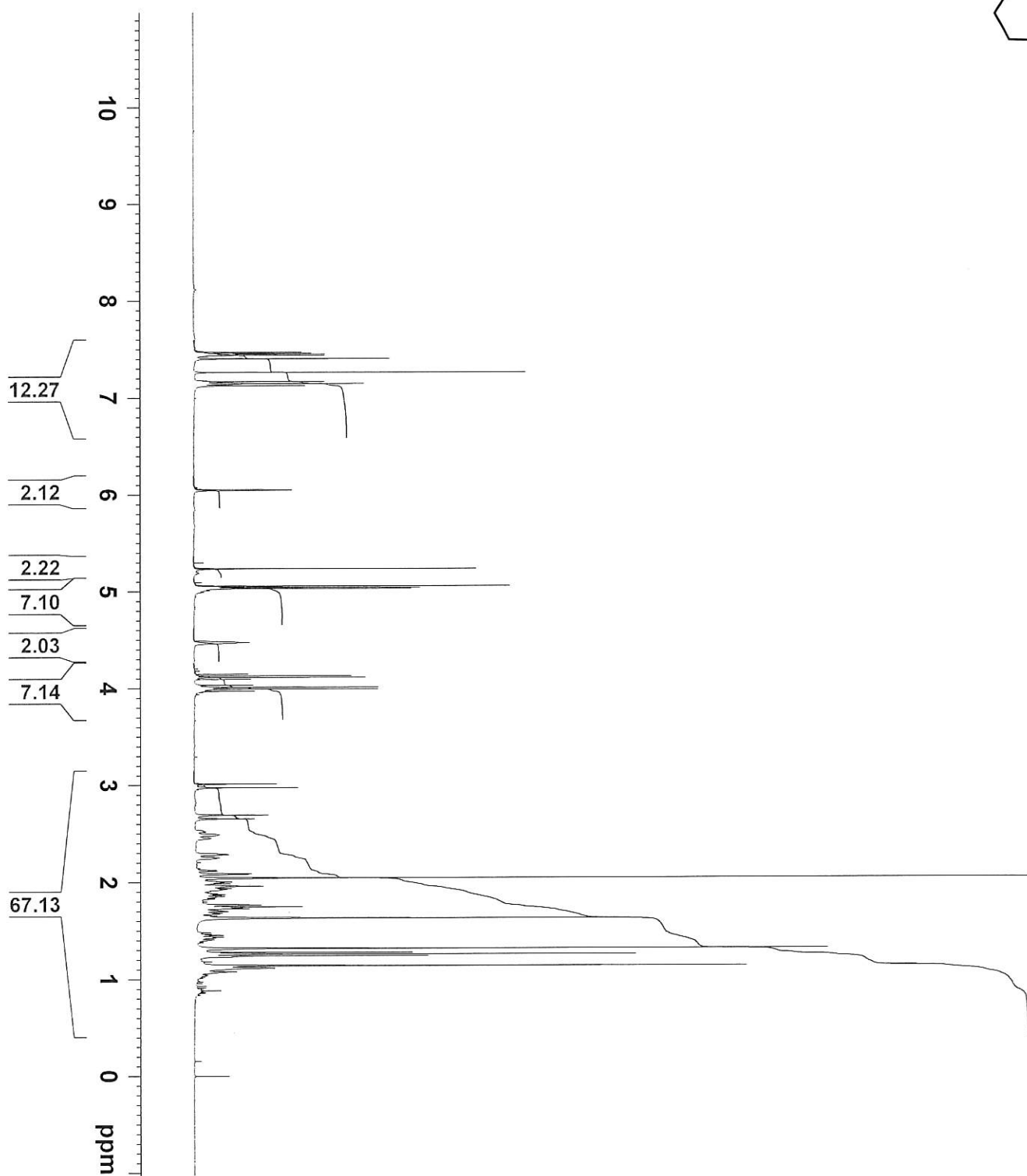
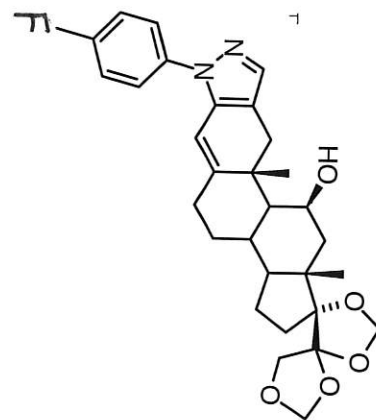


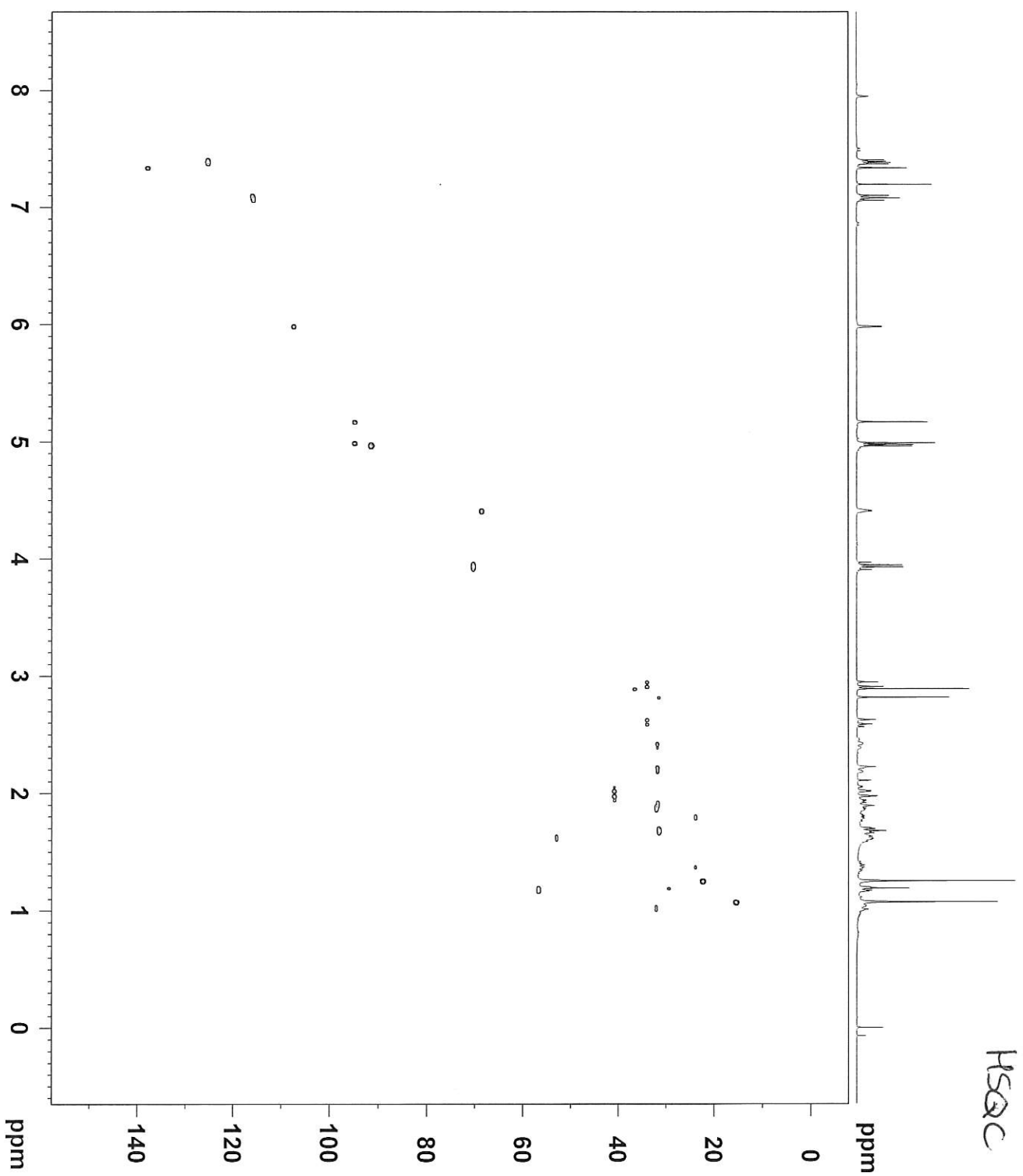
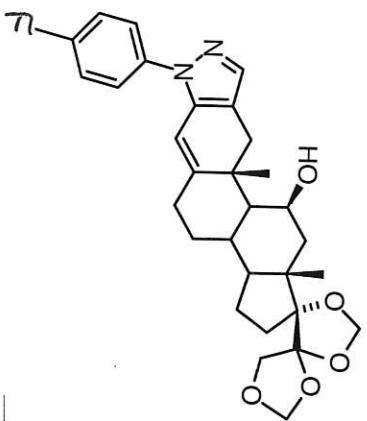


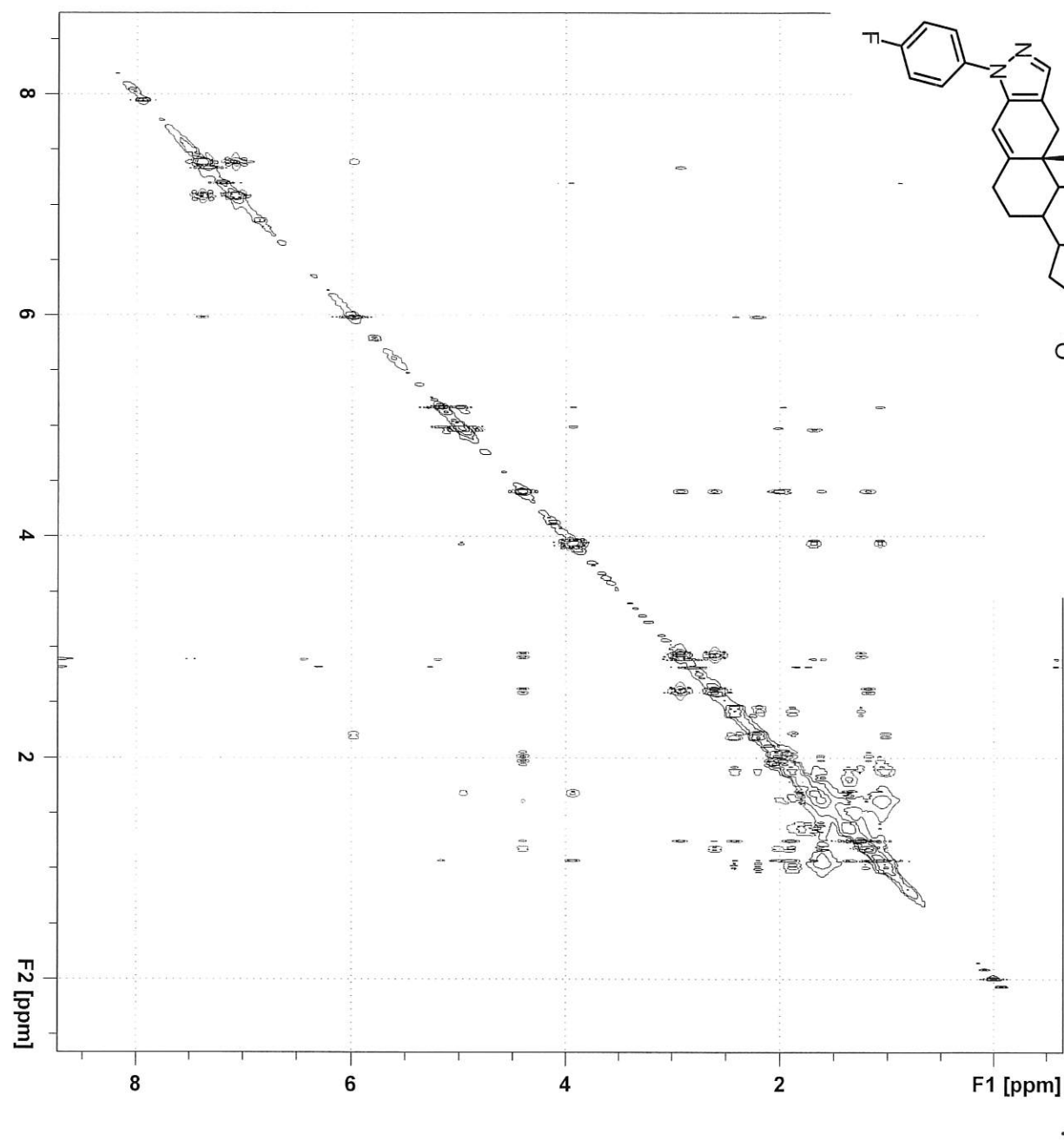
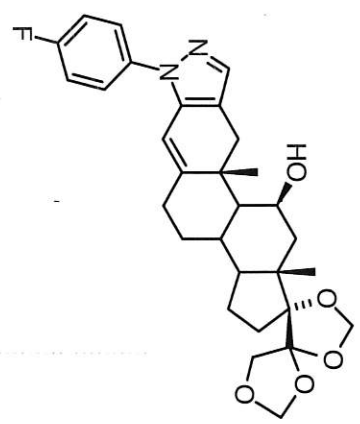














Current Data Parameters  
NAME AMW-couplingPF-p22C  
EXPNO 11  
PROCNO 1

F2 - Acquisition Parameters  
Date\_ 20160824

Time 8.03

INSTRUM spect

PROBHD 5 mm PABBO BB/

PULPROG cosypppgqt

TD 2048

SOLVENT CDCl3

NS 1

DS 8

SWH 3731.343 Hz

FIDRES 1.821945 Hz

AQ 0.2744320 sec

RG 40.14

DW 134.000 usec

DE 6.50 usec

TE 298.0 K

D0 0.00000300 sec

D1 1.93856001 sec

D11 0.03000000 sec

D12 0.00002000 sec

D13 0.00000400 sec

D16 0.00020000 sec

IN0 0.00026800 sec

===== CHANNEL f1 =====

SFO1 400.191409 MHz

NUC1 1H

P0 9.75 usec

P1 9.75 usec

P17 2500.00 usec

PLW1 15.00000000 W

PLW10 2.10940003 W

===== GRADIENT CHANNEL =====

GENM[1] SMSQ10.100

GP21 10.00 %

PL6 1000.00 usec

F1 - Acquisition parameters

TD 128

SFO1 400.1916 MHz

FIDRES 29.151119 Hz

SW 9.324 ppm

FMODE QF

F2 - Processing parameters

SI 1024

SF 400.1900364 MHz

WDW QSINE

SSB 0

GB 0 Hz

PC 1.40

F1 - Processing parameters

SI 1024

MC2 QF

SF 400.1900364 MHz

WDW QSINE

SSB 0

GB 0 Hz

PC 1.40

F1 - Processing parameters

SI 1024

MC2 QF

SF 400.1900364 MHz

WDW QSINE

SSB 0

GB 0 Hz

PC 1.40

F1 - Processing parameters

SI 1024

MC2 QF

SF 400.1900364 MHz

WDW QSINE

SSB 0

GB 0 Hz

PC 1.40

F1 - Processing parameters

SI 1024

MC2 QF

SF 400.1900364 MHz

WDW QSINE

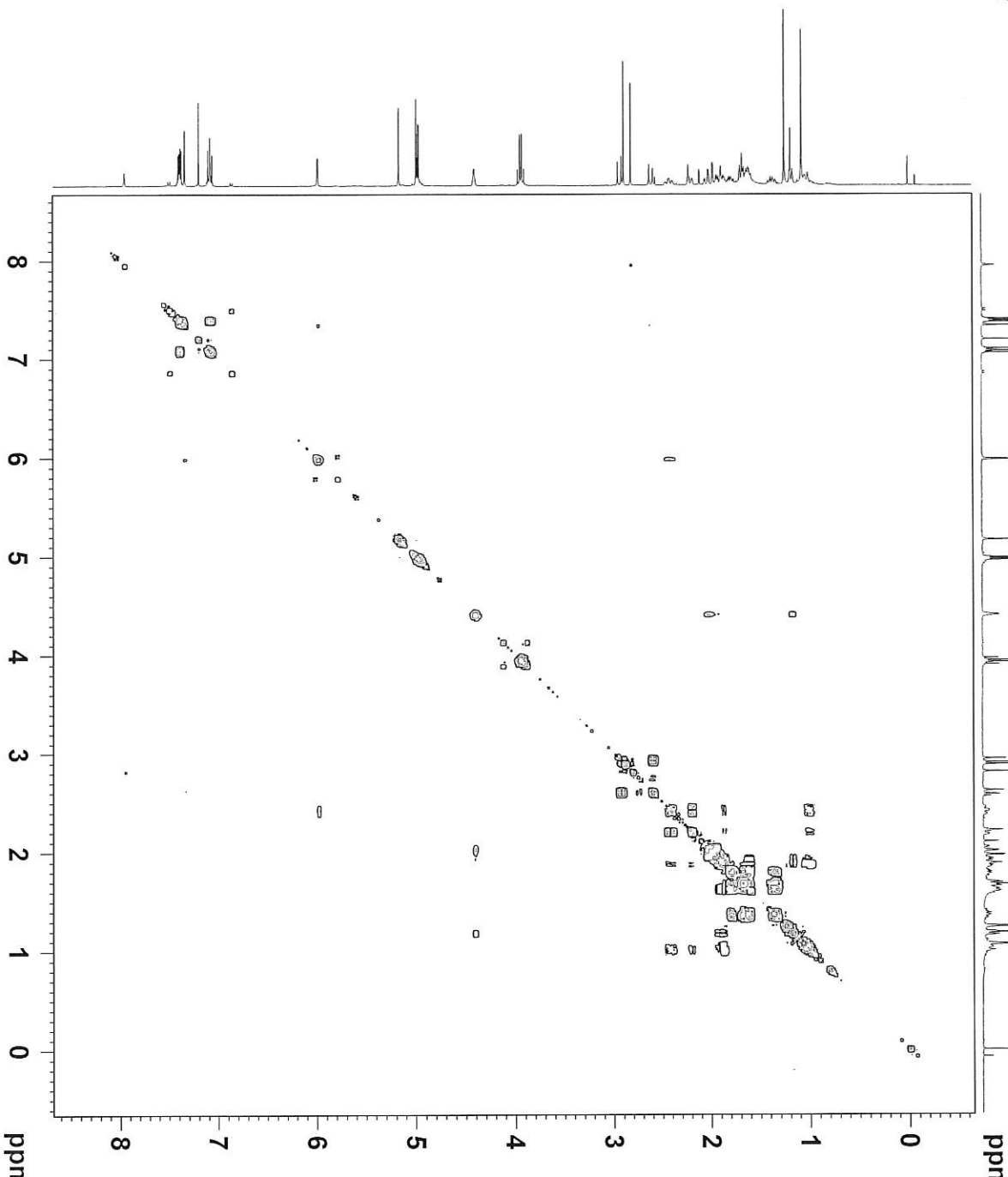
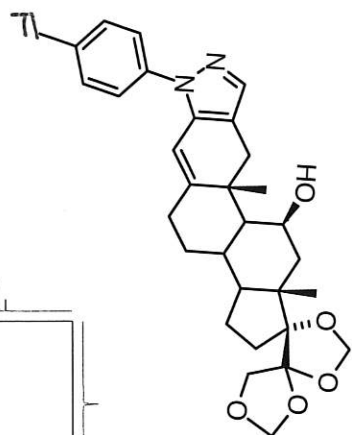
SSB 0

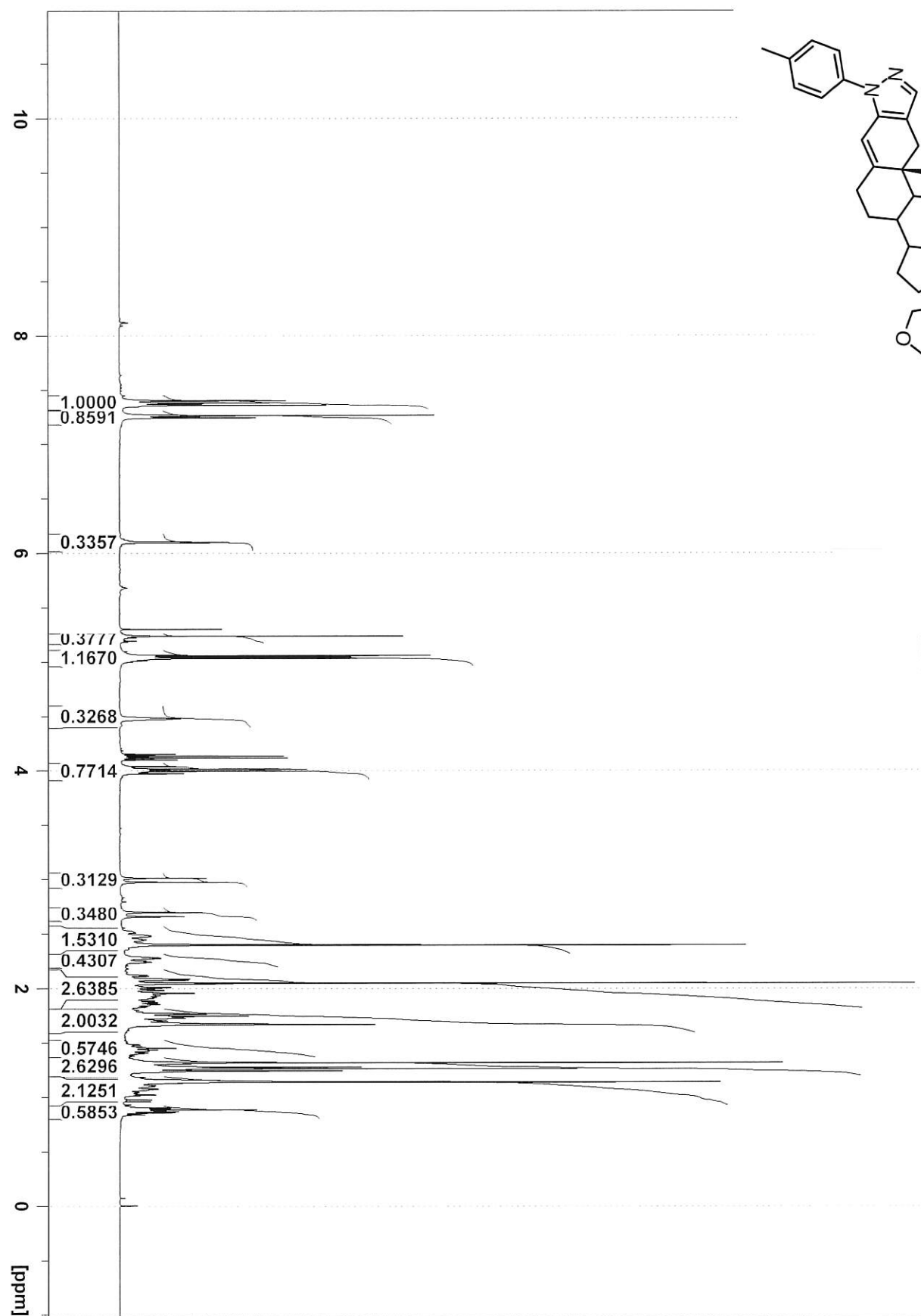
GB 0 Hz

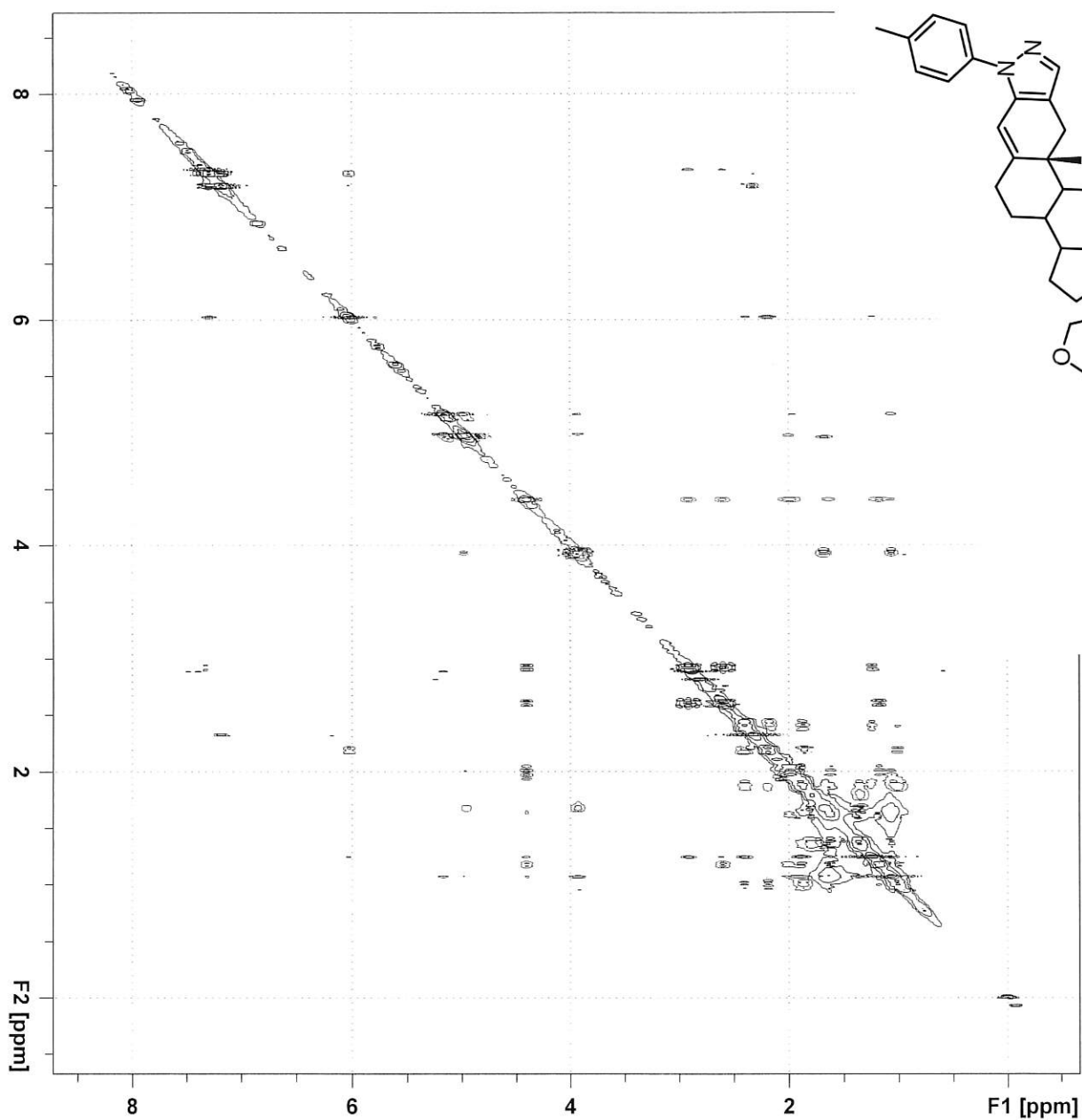
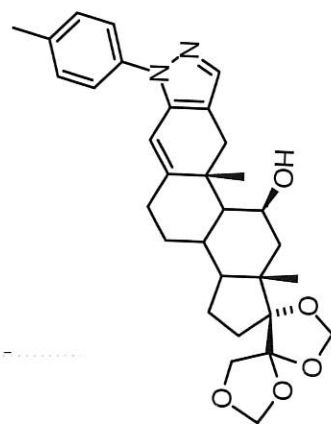
PC 1.40

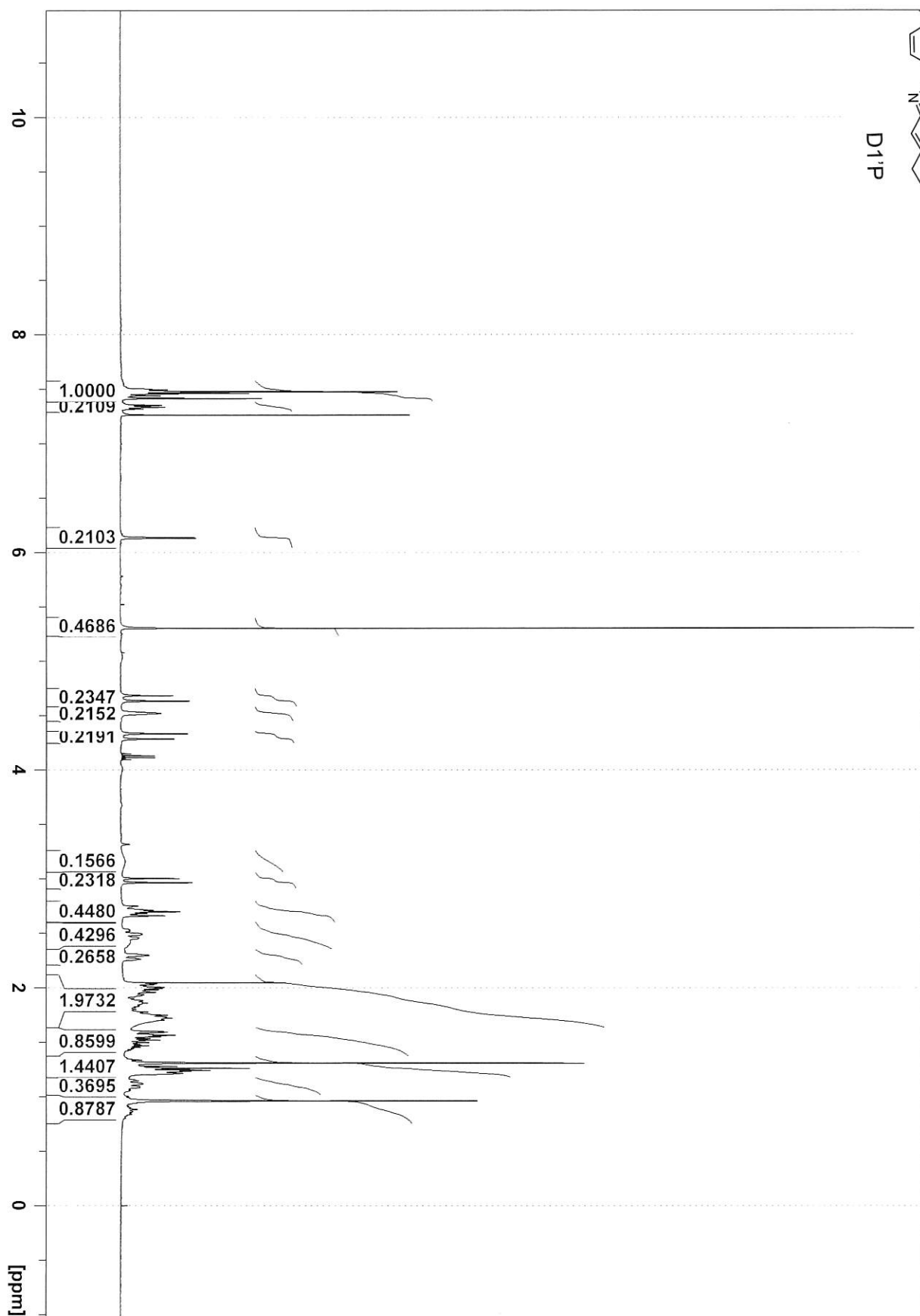
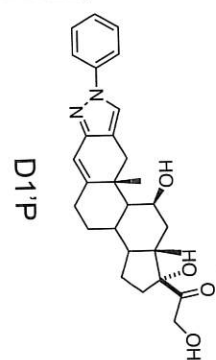
F1 - Processing parameters

SI 1024

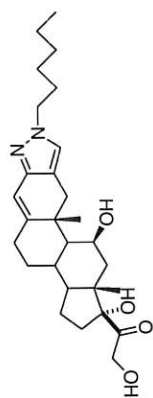




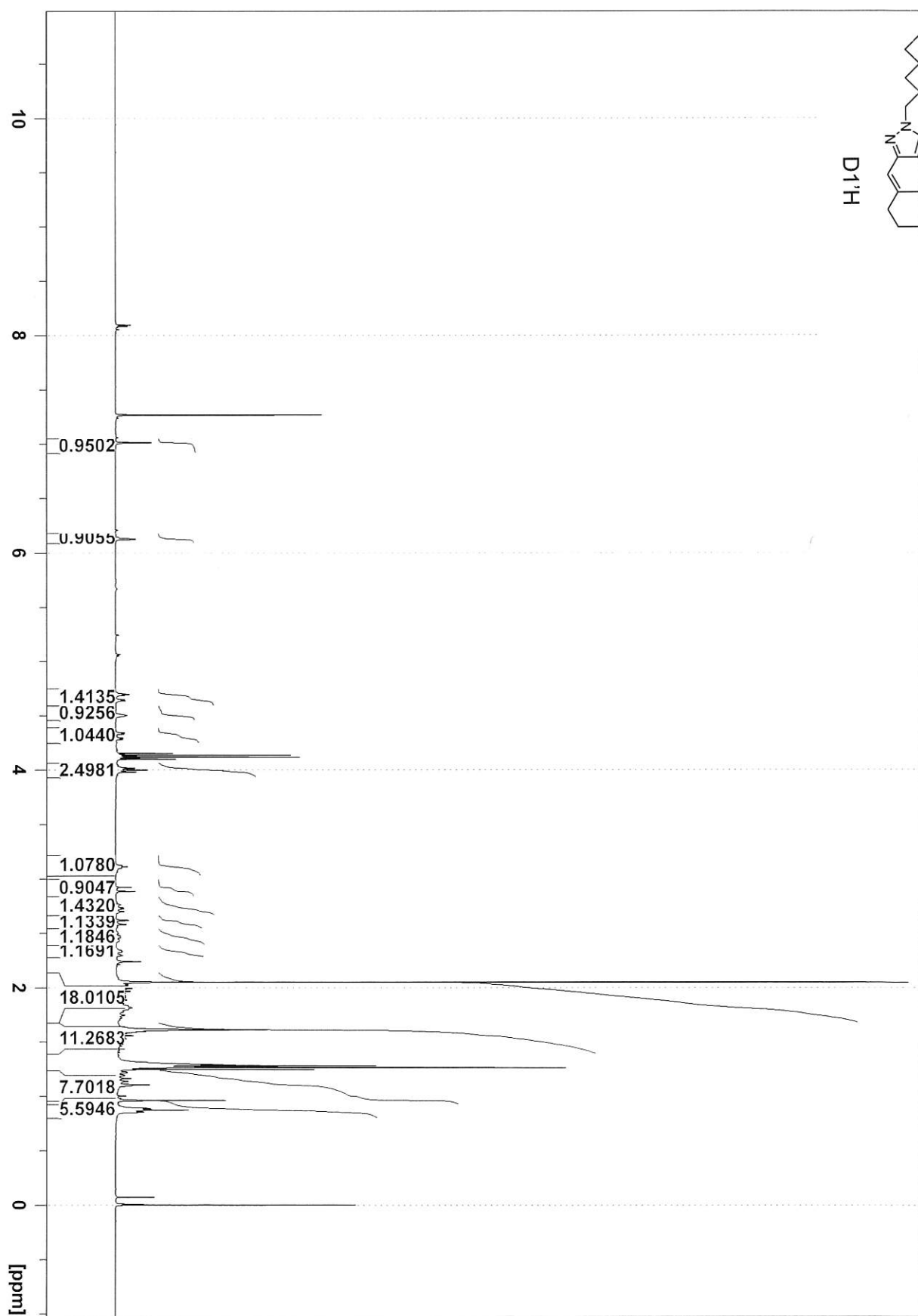


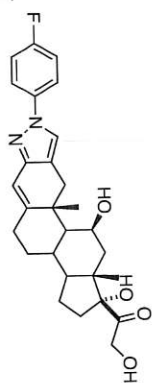




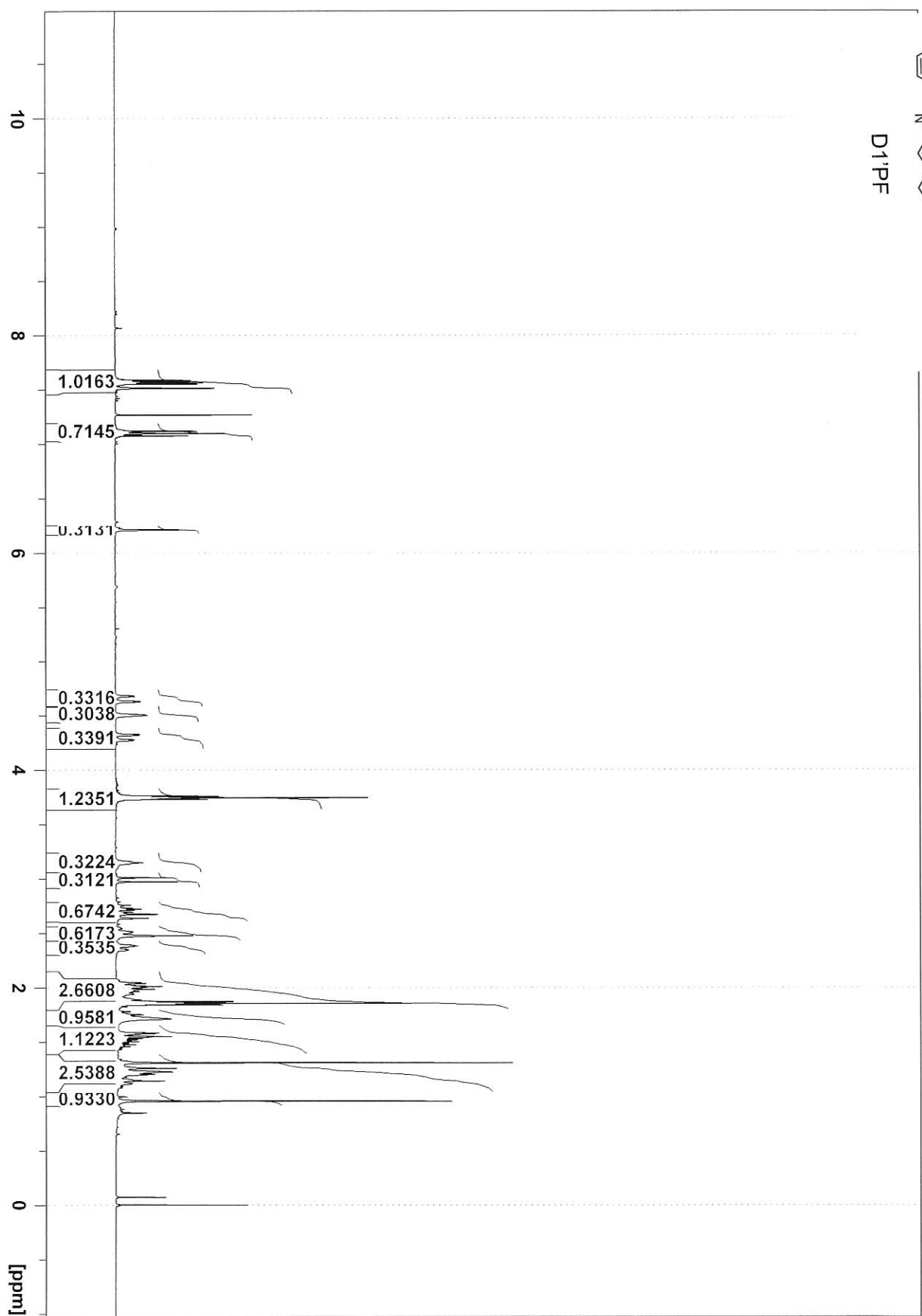


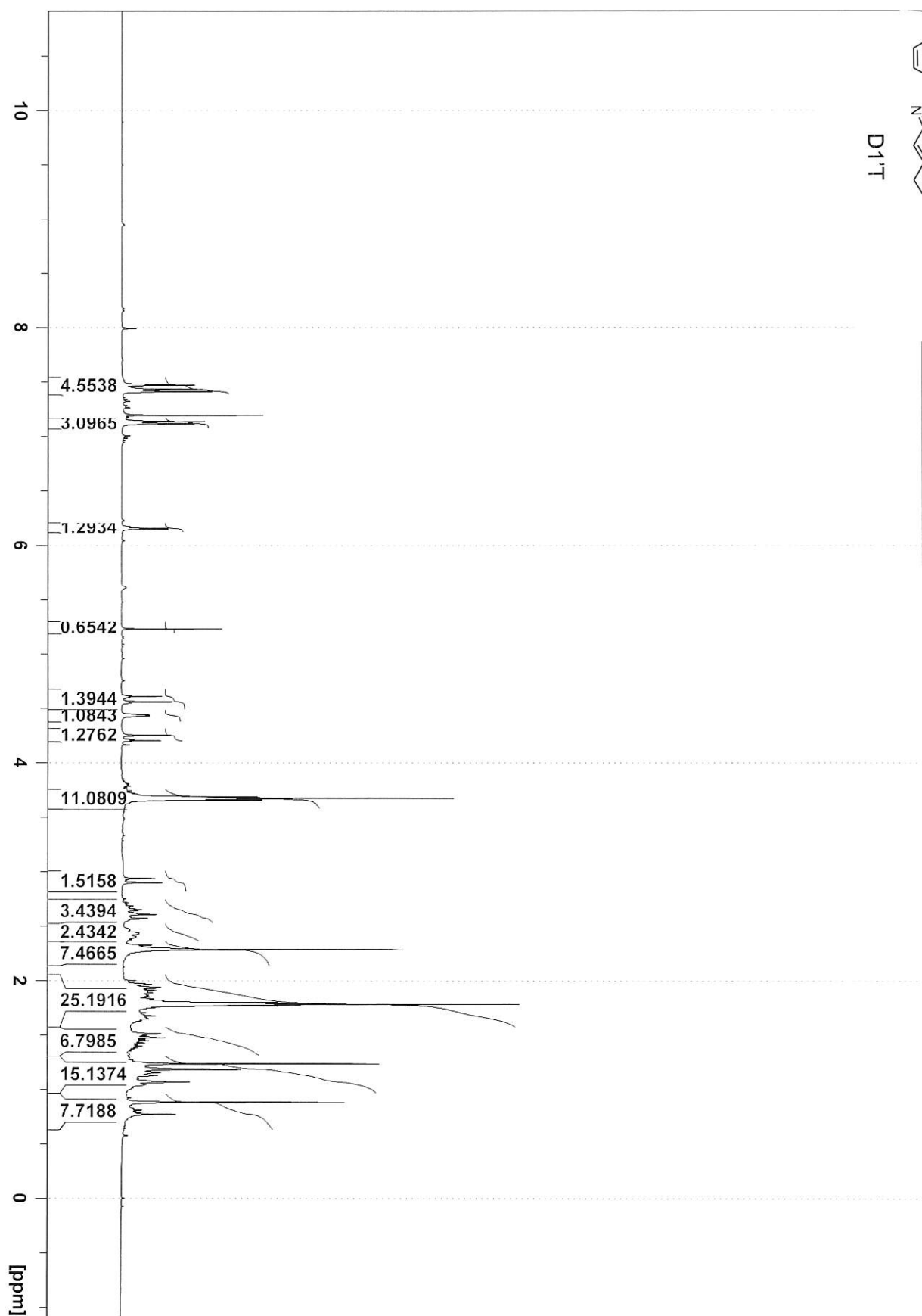
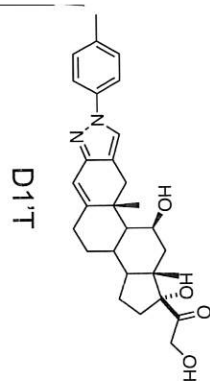
D1'H

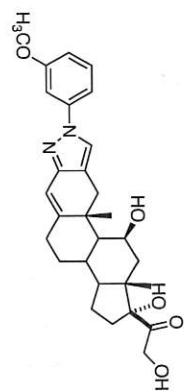




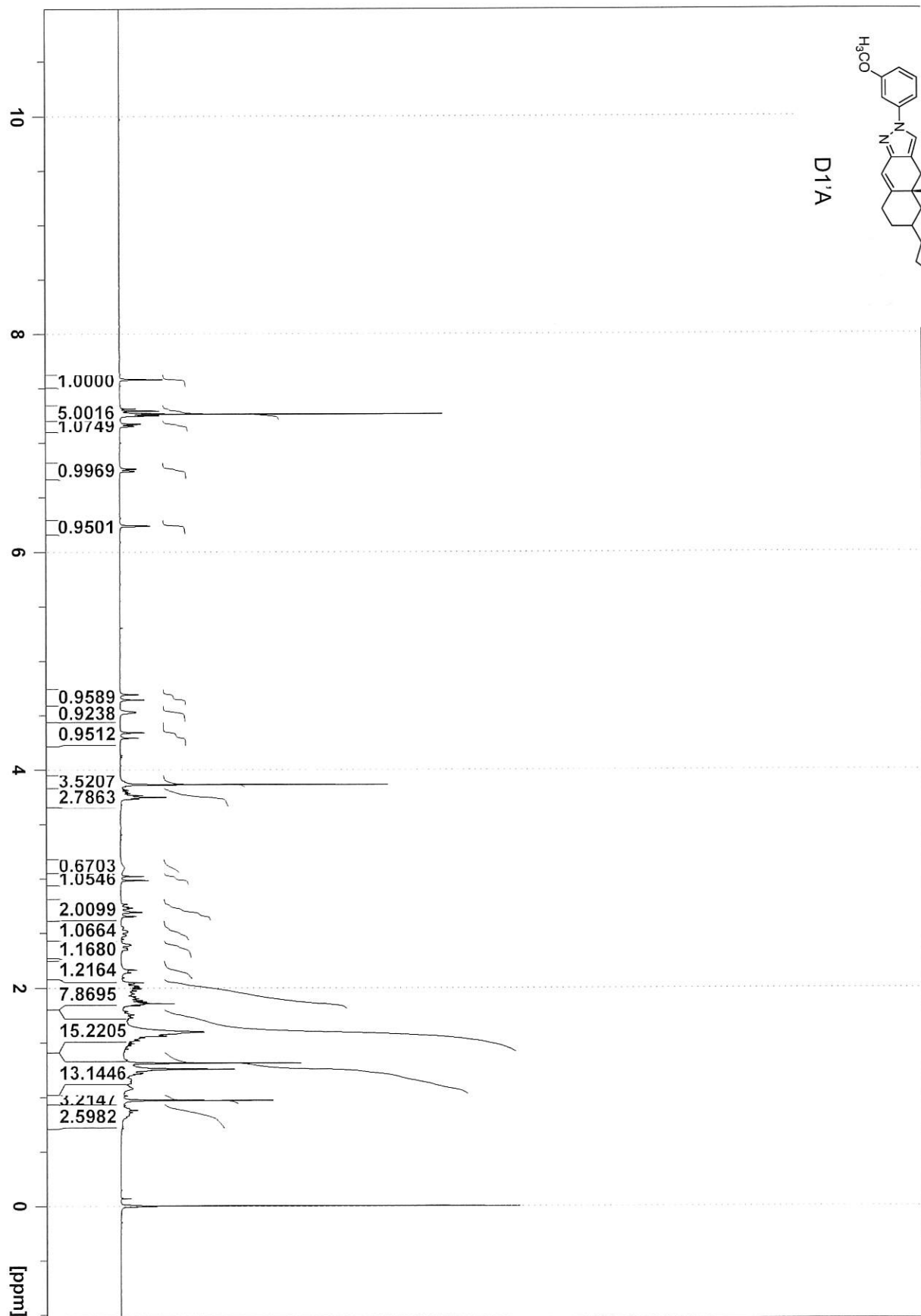
D1'PF

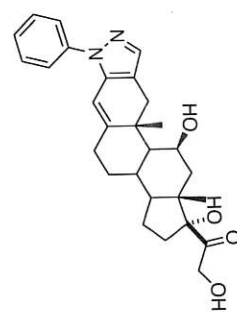




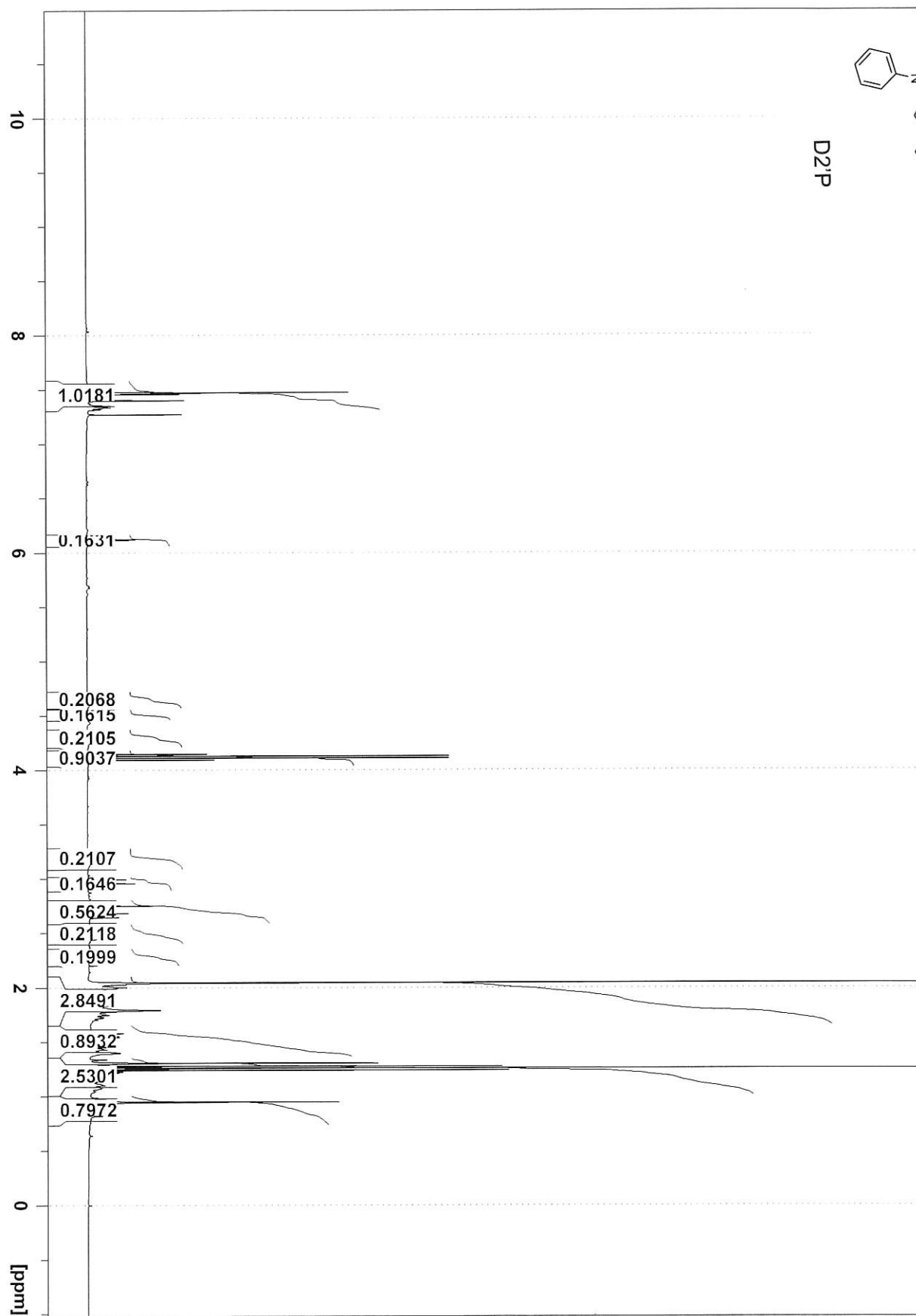


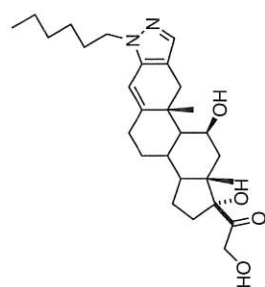
D1'A



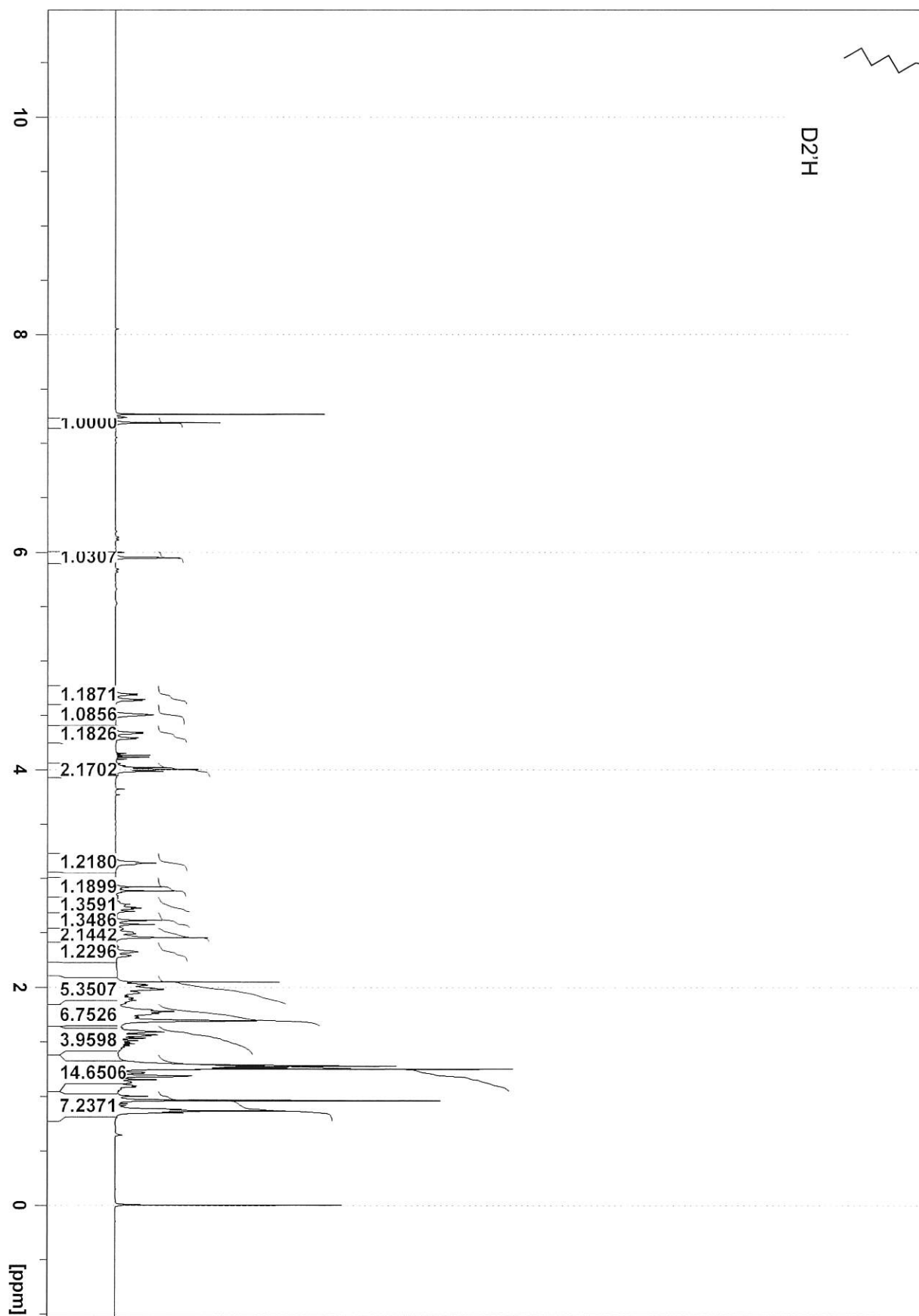


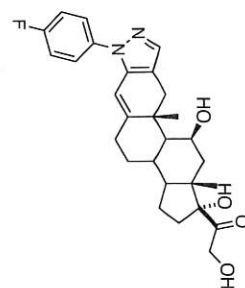
D2:P



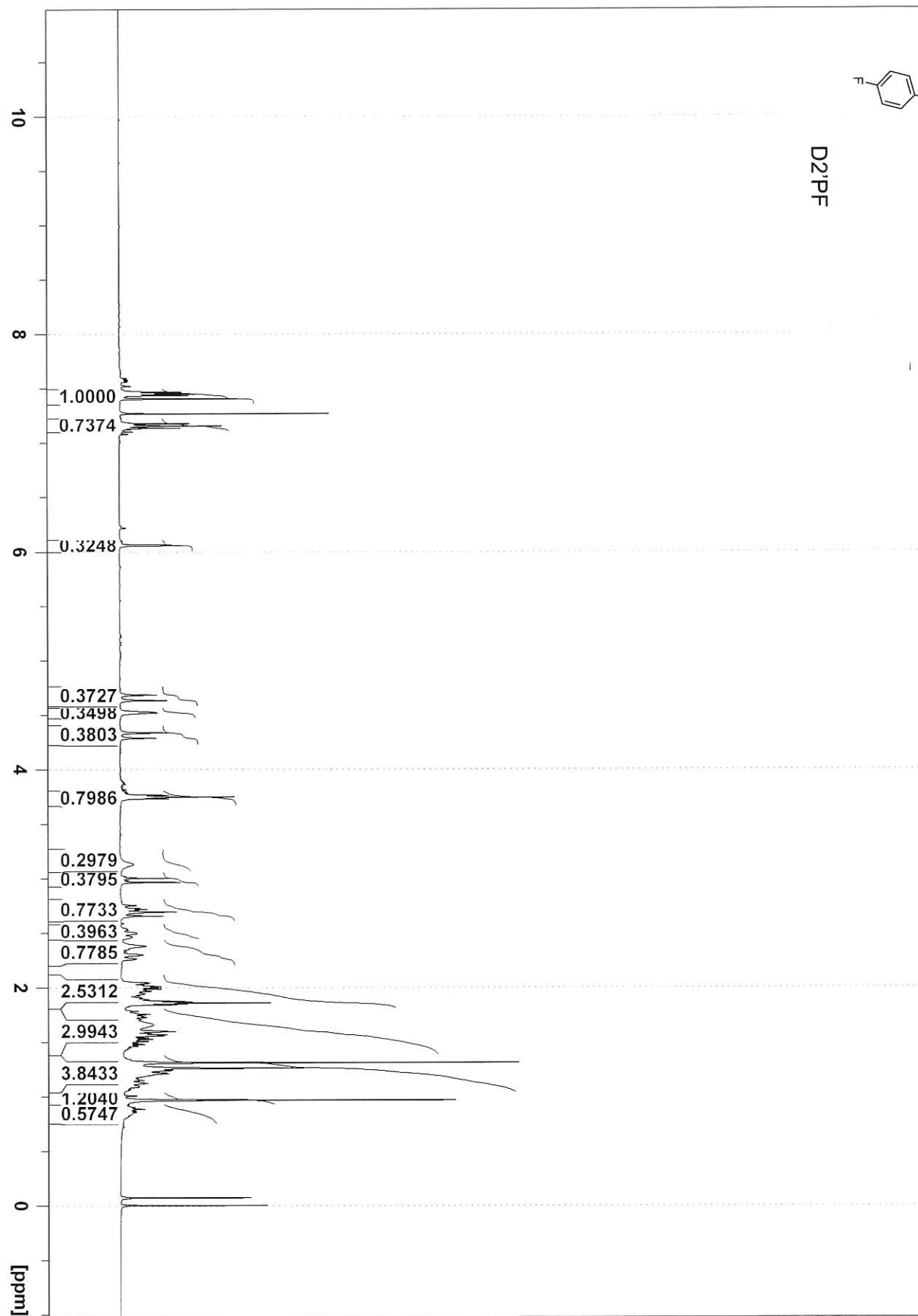


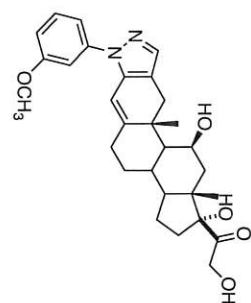
D<sub>2</sub>O





D2:PF





D2'A

