

Supporting information

Integration of Fluorescence/Photoacoustics Imaging and Targeted Chemo/Photothermal Therapy with Ag₂Se@BSA-RGD Nanodots

Xiuhui Yin, Xianglong Li, Chunling Zhu*, Xucong Lin, Zenghong Xie

College of Chemistry, Fuzhou University, Fuzhou 350108, P.R. China. Fax: +86 591

22866159

*Tel: +86 591 22866159; *E-mail: clzhu@fzu.edu.cn

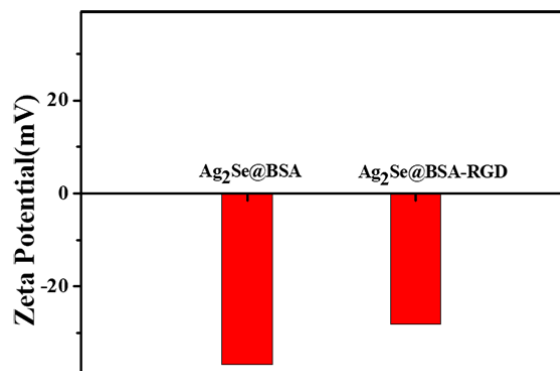


Fig. S1 Zeta potential of Ag₂Se@BSA and Ag₂Se@BSA-RGD QDs.

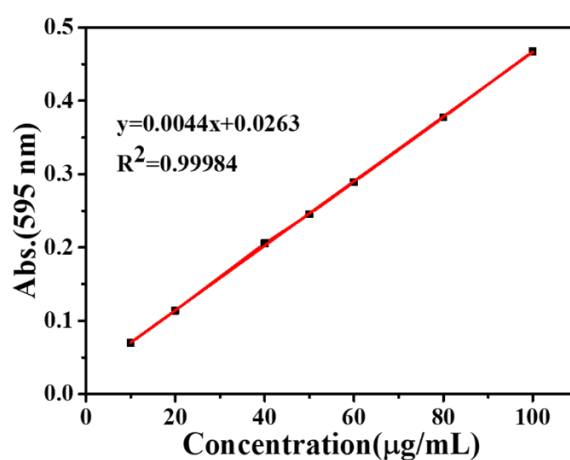


Fig. S2 Standard adsorption curve of G250 with RGD at 595 nm.

The modification RGD molecules on QDs was calculated as the following equation:

$$\frac{\text{Total RGD added} - \text{RGD in supernatant}}{\text{Ag}_2\text{Se@BSA QDs}}$$

The RGD content in the supernatant was detected and calculated according to the standard working curve of RGD. And the mass ratio of total added RGD and Ag₂Se@BSA QDs is 1: 5.

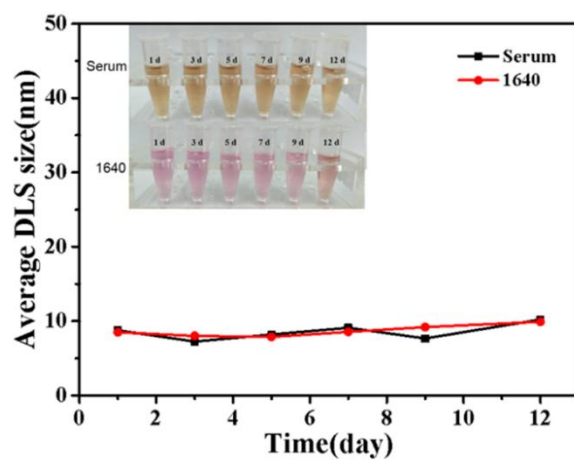


Fig. S3 Evaluation the stability of Ag₂Se@BSA-RGD QDs in the serum and RPMI 1640 medium.

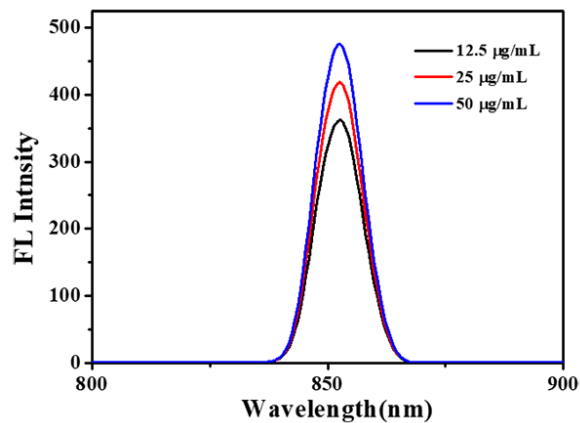


Fig. S4 Fluorescence spectrums of Ag₂Se@BSA QDs with different concentration.

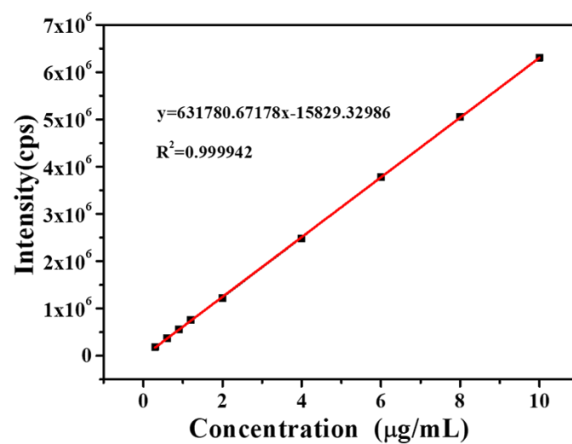


Fig. S5 ICP-AES quantitative fitting of the standard curve of Ag^+ .

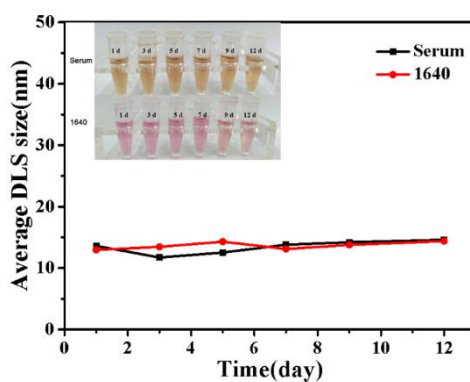


Fig. S6 Stability of $\text{Ag}_2\text{Se@BSA-DOX}$ during the incubation with serum or RPMI 1640 medium for 12 days, respectively.

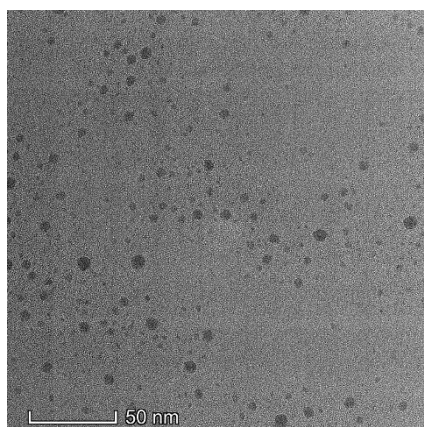


Fig. S7 TEM image of $\text{Ag}_2\text{Se@BSA-DOX-RGD}$.

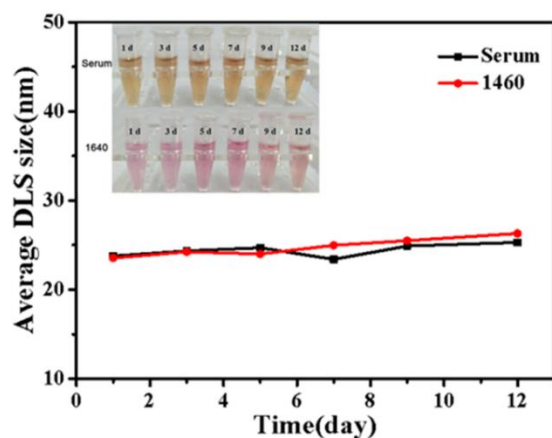


Fig. S8 Stability of Ag₂Se@BSA-DOX-RGD during the incubation with serum or RPMI 1640 medium for 12 days, respectively.

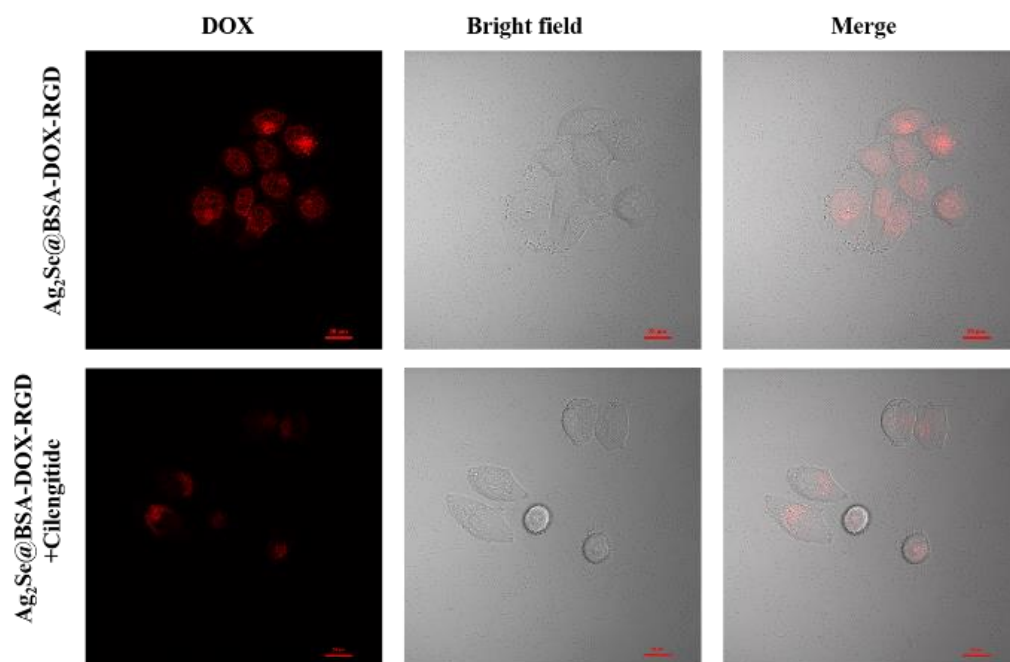


Fig. S9 CLSM image of Ag₂Se@BSA-DOX-RGD QDs incubated with HeLa cells for 4 h, the first to third columns are dark field, bright field, and Merge field, respectively. The concentration of Ag⁺ and DOX in all the groups are 1.39 mM and 5 µg/mL. The content of cilengitide is 50 µM.

1. Determining fluorescence quantum yield of Ag₂Se@BSA QDs

The quantum yield (QY) of as-synthesized Ag₂Se@BSA QDs was measured using indocyanine green (ICG) as a reference (QY=13% in DMSO). The absorption spectra of the Ag₂Se QDs and ICG solutions were recorded. Then the fluorescence spectra of these samples were recorded under the same excitation. The fluorescence quantum yield was calculated according to the following equation:

$$\phi_{QD} = \phi_{ICG} \left(\frac{F_{QD}}{F_{ICG}} \right) \left(\frac{A_{ICG}}{A_{QD}} \right) \left(\frac{n_{QD}}{n_{ICG}} \right)^2$$

Where ϕ_{QD} , F_{QD} , A_{ICG} , n_{QD} are the quantum yield (QY), integrated fluorescence intensity, integrated absorption and refractive index of the solvent for the Ag₂Se QDs. The parameters with a subscript of ICG are corresponding quantities of ICG. All data are measured three times and averaged.

2. Calculation of the photothermal conversion efficiency (PTCE)

The formula of the photothermal conversion efficiency is as following:

$$\eta = \frac{\sum m_i c_i (T_{max} - T_{max, H_2O})}{\tau_s I (1 - 10^{-A_{808}})}$$

With τ_s is equal to 500 s, m is 1.0 g and C is 4.2 J/g, Substituting $I = 2.0$ W, $A_{808} = 0.2842$, $T_{max} - T_{max, H_2O} = 58.8 - 27 = 31.8$ °C into above formula, $PTCE = (0.0084 * 31.8) / (2 * (1 - 10^{-0.2842})) = 27.8\%$