

## Supporting Information

### Montmorillonite Assisted Space Confinement Induced Co/Co<sub>9</sub>S<sub>8</sub>/ N, S co-doped Carbon Nanosheets Derived from Thin Metal Organic

#### Layers for Oxygen Electrocatalysis

Hengbo Zhang,<sup>\*, [a]</sup> Fuquan Niu,<sup>\*, [a]</sup> Shaoyu Li,<sup>[b]</sup> Yanhong Yin,<sup>\*, [a]</sup> Hongyu Dong,<sup>[a]</sup> Hongyun Yue,<sup>[a]</sup> Zhaoxia Cao<sup>[a]</sup> and Shuting Yang<sup>\*, [a]</sup>

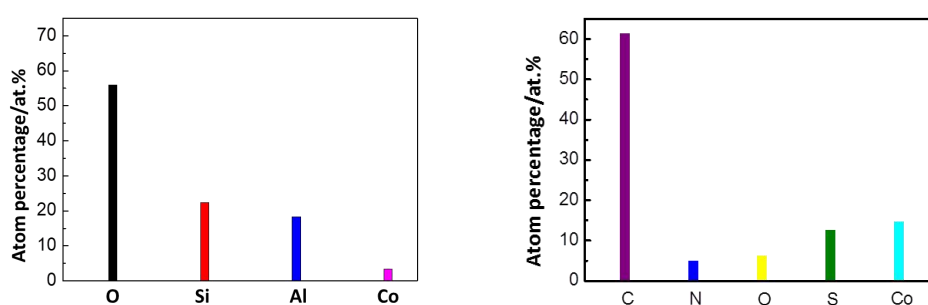


Figure S1. a) Atom percentage of Co-MMT from EDS test. b) Atom percentage of T-CCSNC from EDS tests.

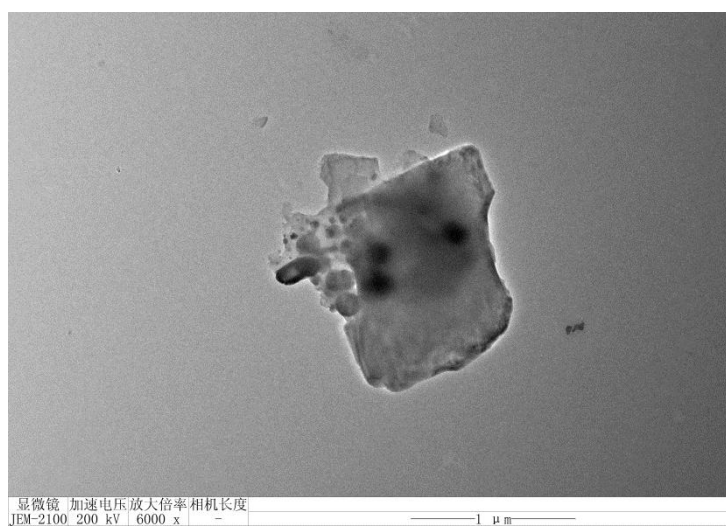


Figure S2. TEM image of CCSNC.

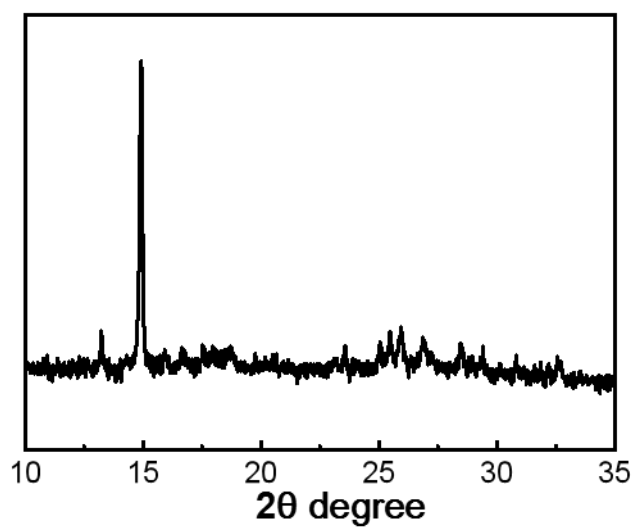


Figure S3. XRD patterns of Co-MOLs.

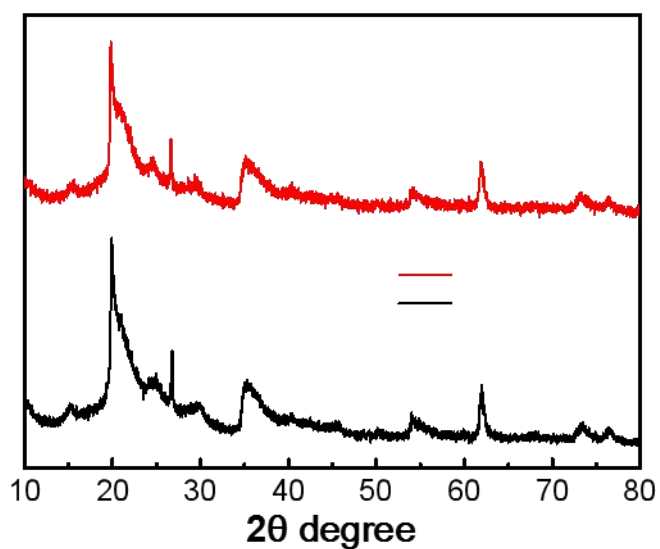


Figure S4. XRD patterns of purchased MMT and Co-MMT from ion exchange.

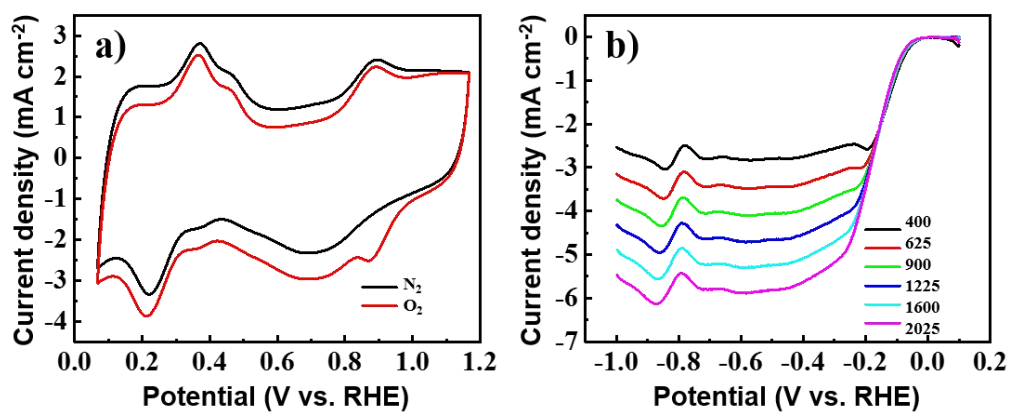


Figure S5. CV curves of Pt/C in alkaline medium with  $10 \text{ mV s}^{-1}$  scan rates in  $\text{N}_2$  or  $\text{O}_2$  atmosphere, (b) LSV curves of Pt/C in alkaline medium with  $10 \text{ mV s}^{-1}$  scan rates in  $\text{O}_2$  atmosphere at 400, 625, 900, 1225, 1600, 2025 rotate speed, respectively.