

Biodegradable Nanodrug of Molybdenum Silicide for the Photothermal Oncotherapy

Changjiu Gao,^a Chune Liang,^b Qing Wang,^b Wenchao Li,^a Qichao Liang,^a Chunhui Wang,^a Lili Chen^{*b}

^a *College of pharmacy, Mudanjiang Medical University, Heilongjiang Mudanjiang, 157011, China*

^b *Hongqi Hospital Affiliated to Mudanjiang Medical University, Heilongjiang Mudanjiang, 157011, China.*

† E-mail: zhantao6666@126.com; gaochangjiu1983@sina.com

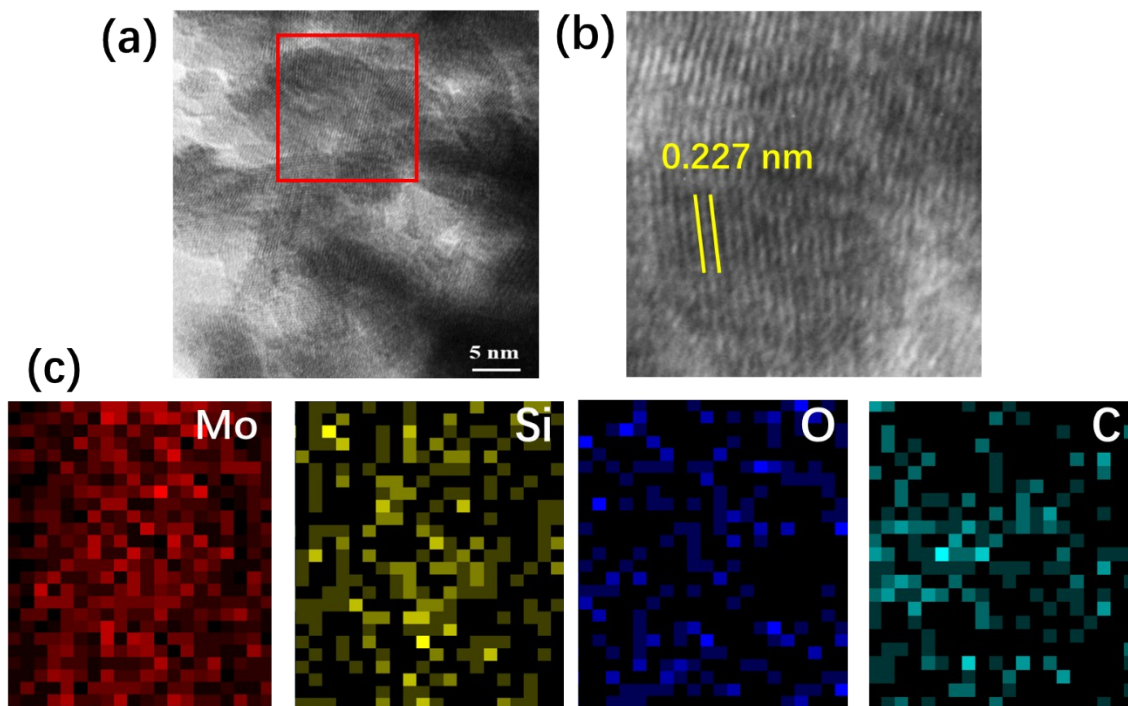


Figure S1. (a) - (b) HR-TEM images and (c) EDS mapping of MoSi₂. (The red pane in Fig S1 is the EDS area)