

Chiral liquid chromatography–mass spectrometry (LC–MS/MS) method development with β -cyclodextrin (β -CD) derivatized chiral stationary phase for the enhanced separation and determination of flurbiprofen enantiomers: Application to a stereoselective pharmacokinetic study

Jiayi Sun, Beibei Liu, Liangzhao Cai, Jia Yu*, Xingjie Guo*

Journal in which to be published: New Journal of Chemistry

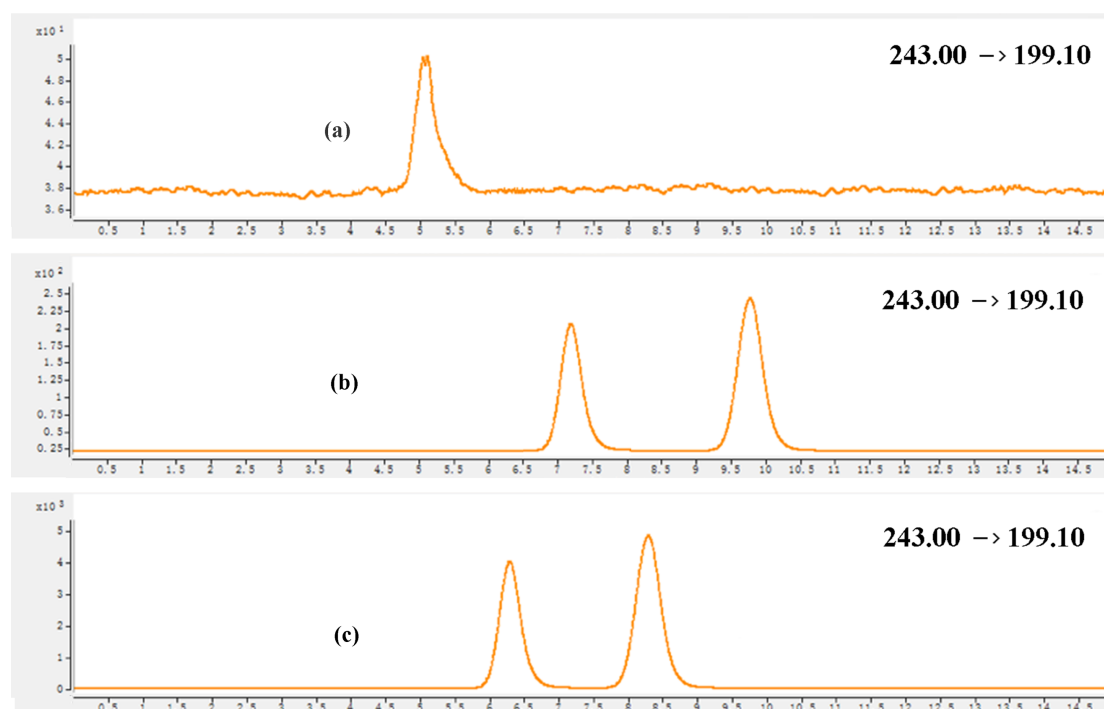


Fig.S1 Typical MRM chromatograms under different mobile phase conditions. (a) ACN-water (60:40, v/v); (b) MeOH-0.1% formic acid (70:30, v/v); (c) MeOH-5 mM ammonium acetate (70:30, v/v)