

New Journal of Chemistry

**Mussel-inspired osteogenesis microenvironment with bioactive
peptides for dual-functionalization of biomedical substrates**

Yuanyuan Jiang, Yang Xu*

The First Affiliated Hospital of Xiamen University, Xiamen 361003, PR China

Author information:

*Corresponding Author: Yang Xu, E-mail: xuyang19792007@xmu.edu.cn

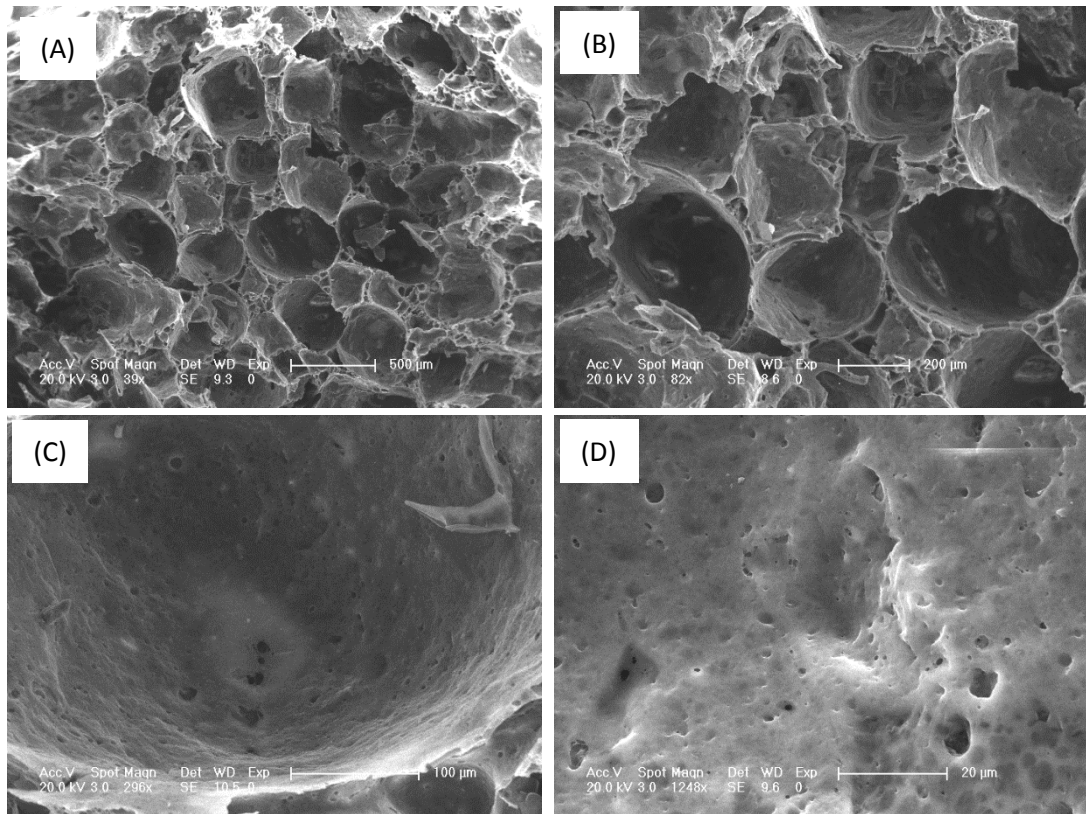


Figure S1. SEM images of HA/PLGA porous scaffolds. The scale bar lengths are 500 μm , 200 μm , 100 μm and 20 μm , respectively.

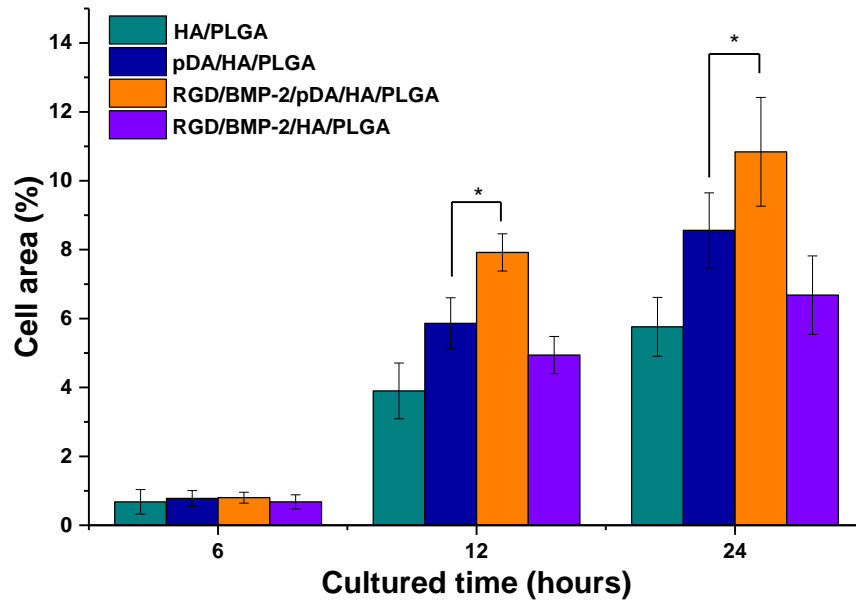


Figure S2. Percentage of cell area cultured on the different substrates for 6, 12, and 24 h. * $p < 0.05$, indicating statistical significance.

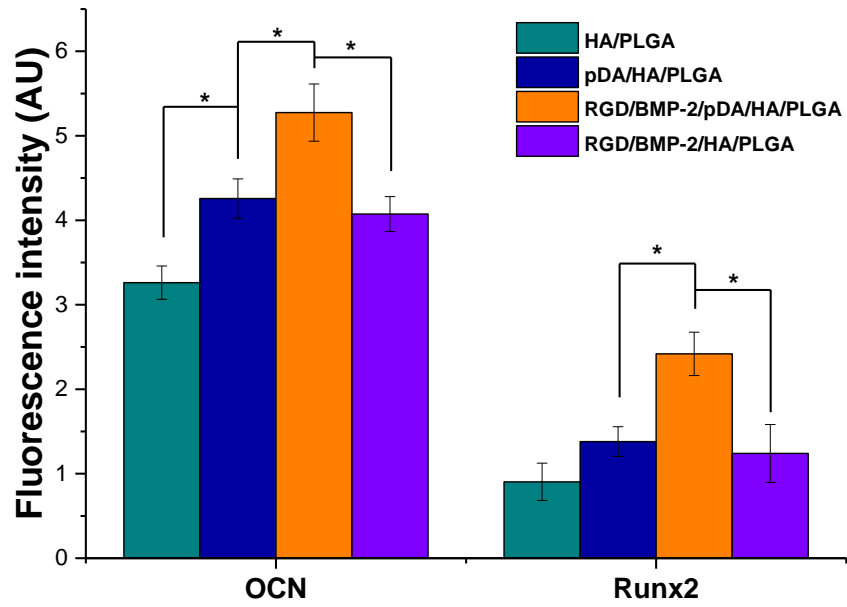


Figure S3. Quantified fluorescence intensity of cells cultured on the different substrates for 7 days.

* $p < 0.05$, indicating statistical significance.