

Supporting information

Self-responsive Co-delivery System for Remodeling Tumor Intracellular Microenvironment to Promotes PTEN-mediated Antitumor Therapy

Yifei Wang ^{a,b,c}, Ruiting Wang ^{a,b}, Sixuan Wu ^{a,b}, Jingyi An ^{a,b}, Yan Liang ^{a,b}, Lin Hou ^{a,b,c*},

Zhenzhong Zhang ^{a,b,c*}

^a School of Pharmaceutical Sciences, Zhengzhou University, Zhengzhou, China

^b Key Laboratory of Targeting Therapy and Diagnosis for Critical Diseases, Henan, China

^c Collaborative Innovation Center of New Drug Research and Safety Evaluation, Henan Province, Zhengzhou, China

*Corresponding Author: Email address: houlin_pharm@163.com (Lin Hou), zhangzz_pharm@163.com (Zhenzhong Zhang)

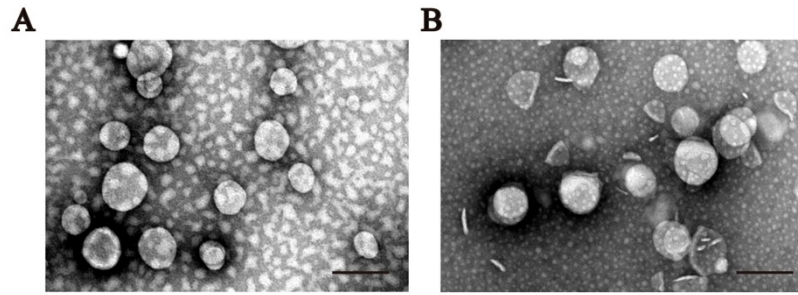


Figure S1. Representative TEM image of A) LP, B) LEP, Scale bar: 200 nm.

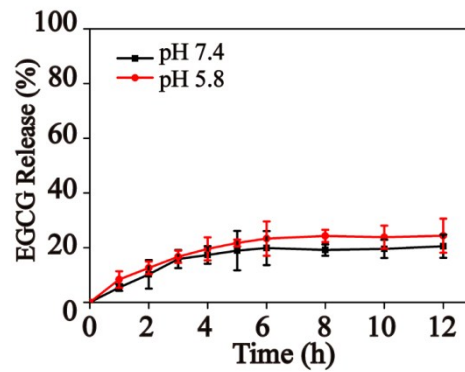


Figure S2. The effect of pH on release of EGCG form cationic liposome (n=3)

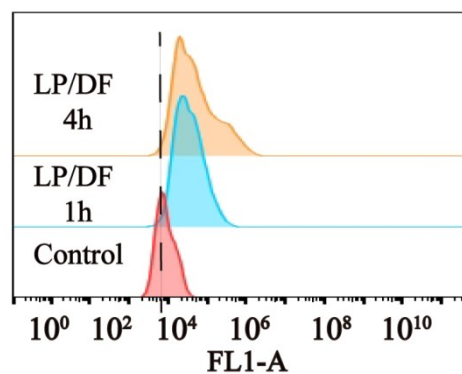


Figure S3. Flow cytometry detect of intracellular DNA-FAM after treatment with LP in PC-3.

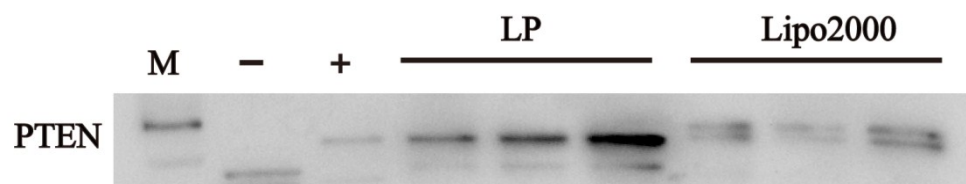


Figure S4. Western bot assay analysis of PTEN protein expression in PC-3 cells with LP and Lipo2000.

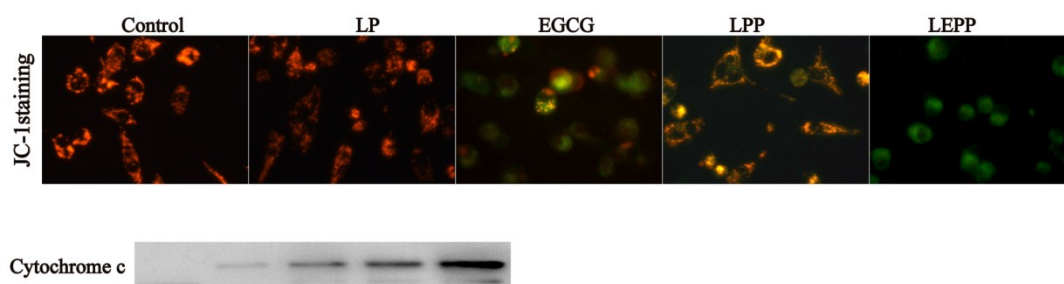


Figure S5. Mitochondria membrane potential images (scale bar: 20 μ m) and Western blotting assays showing the expression level of cytochrome after different treatments.

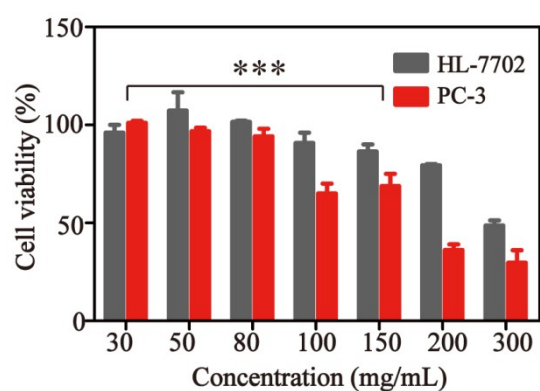


Figure S6. Cell viability of HL-7702 cells and PC-3 cells after incubated with LEPP for 24h (n=6).

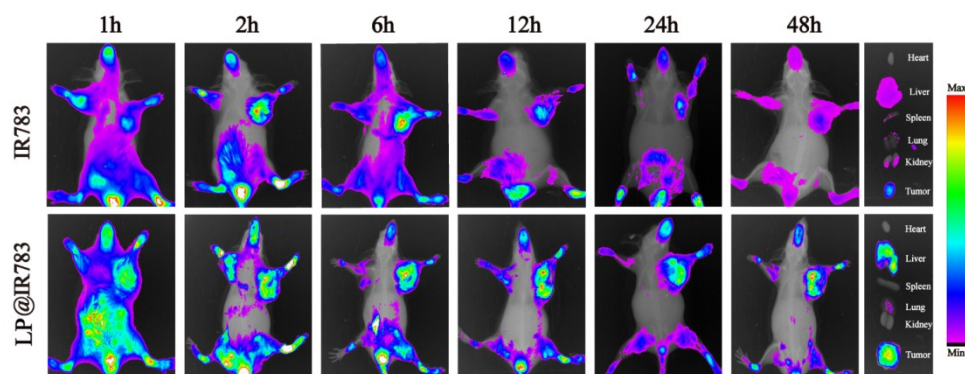


Figure S7. Representative fluorescence image *in vivo* optical images.

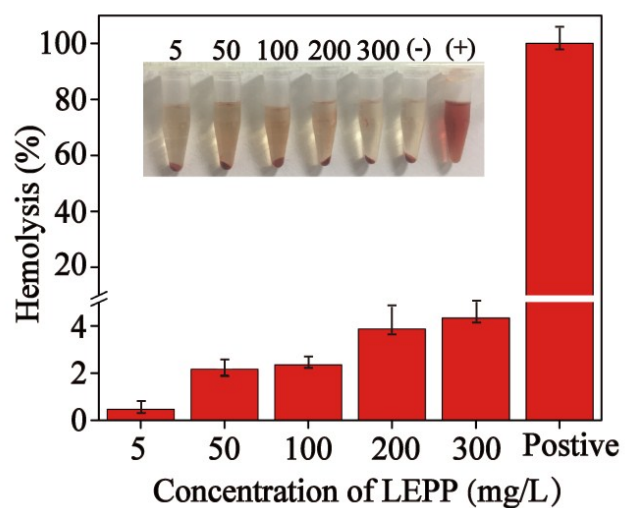


Figure S8. Hemolysis quantification analysis of red blood cells at various concentrations of LEPP (n=3).

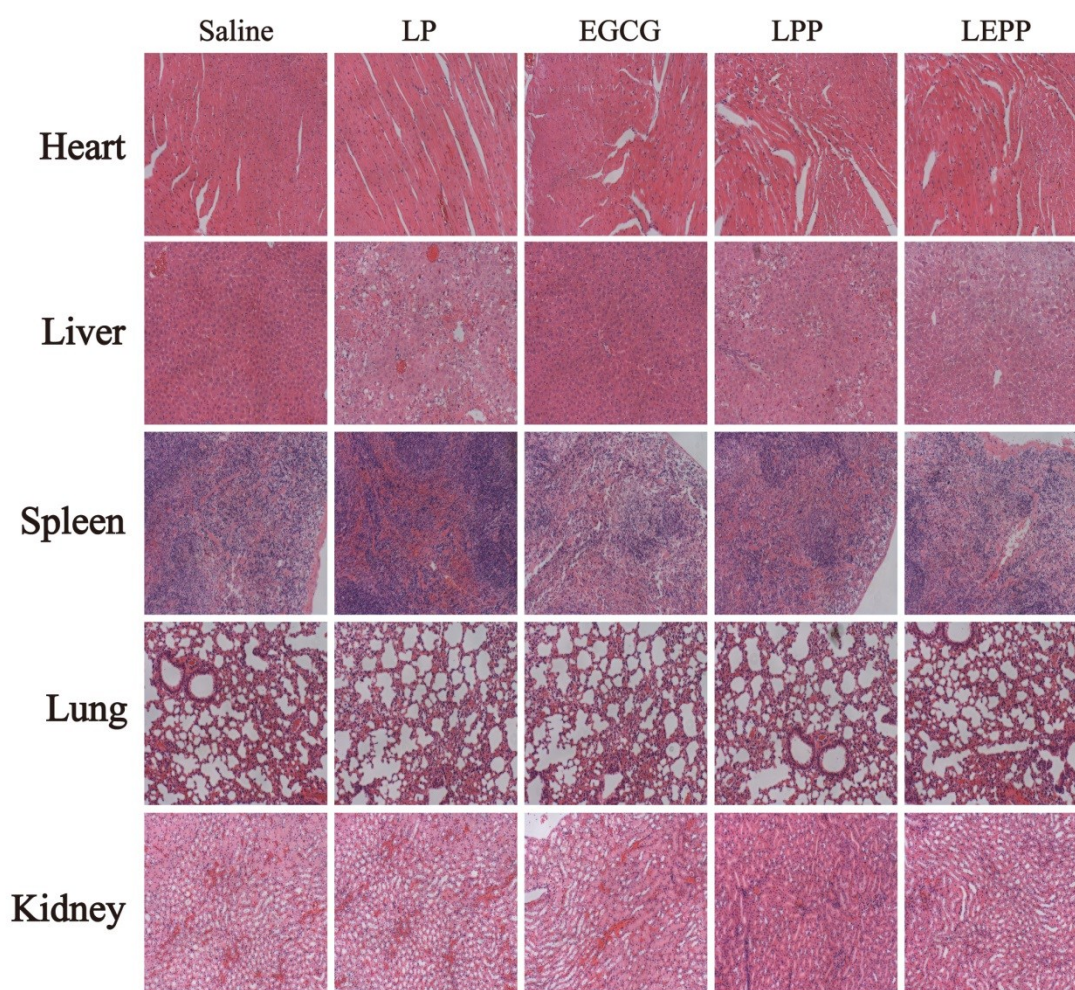


Figure S9. Histology analysis of major organs from mice separated with different group treatment.