

Supporting information for

Cellular Architecture Response to Aspect-Ratio Tunable Nanoarrays

Jing Dai,^{a,b,c} Jinkang Gong,^a Na Kong,^{a,} and Yuan Yao^{a,*}*

^a School of Physical Science and Technology, ShanghaiTech University, 393 Middle Huaxia Road, Pudong, Shanghai 201210, China

^b Shanghai Institute of Ceramics, Chinese Academy of Sciences, 1295 Dingxi Road, Changning, Shanghai 200050, China

^c University of Chinese Academy of Sciences, 19 Yuquan Road, Shijingshan, Beijing 100049, China

*To whom correspondence should be addressed,

Email: yaoyuan@shanghaitech.edu.cn; kongna@shanghaitech.edu.cn;

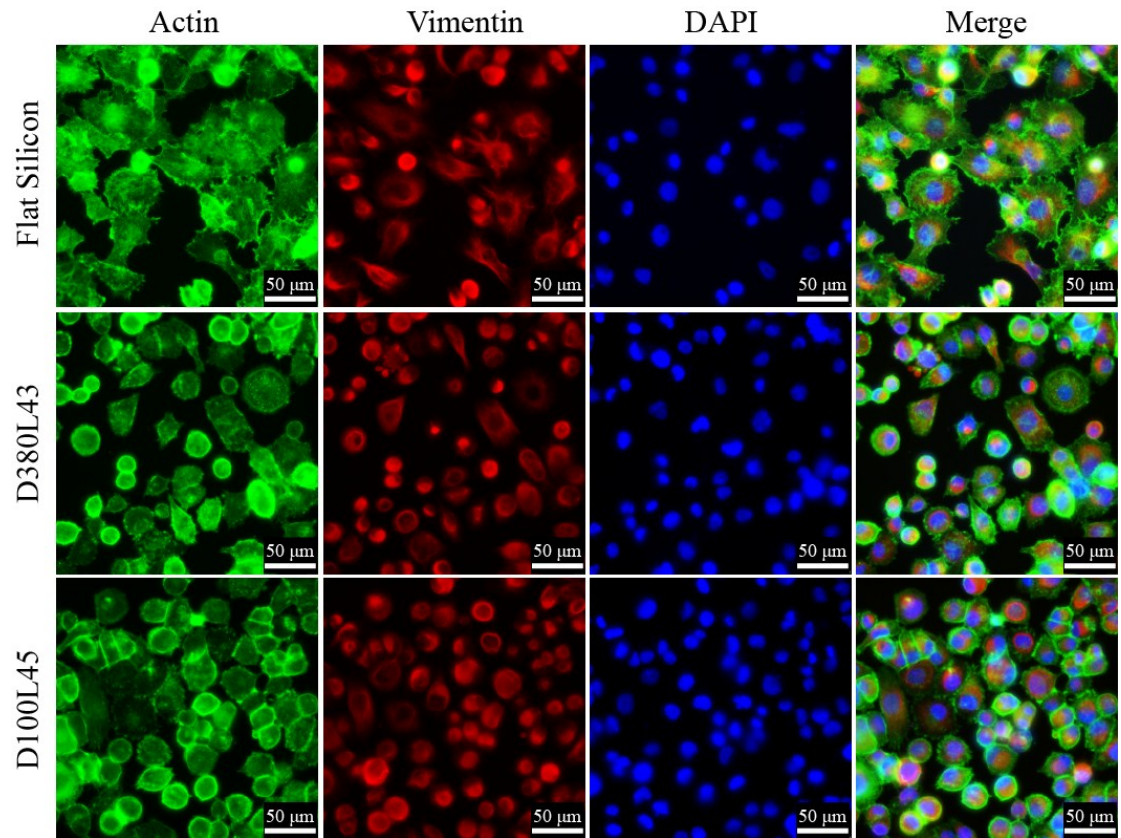


Fig. S1. Fluorescence micrographs of cytoskeletal stress fibers of PANC-1 cells on flat silicon, D380L43, and D100L45 nanoarrays. Actin filaments (green), vimentin filaments (red), DAPI (blue).