

Supplementary Information

Anisotropic Circular Photogalvanic Effect in Colloidal Tin Sulfide Nanosheets

Mohammad Mehdi Ramin Moayed^{1,2}, Fu Li¹, Philip Beck¹, Jan-Christian Schober¹,
Christian Klinke^{1,3,4*}

¹ Institute of Physical Chemistry, University of Hamburg, 20146 Hamburg, Germany.

² Deutsches Elektronen-Synchrotron DESY, Notkestrasse 85, 22607 Hamburg, Germany.

³ Department of Chemistry, Swansea University - Singleton Park, Swansea SA2 8PP, UK.

⁴ Institute of Physics, University of Rostock, Albert-Einstein-Straße 23, 18059 Rostock, Germany.

*Correspondence to: christian.klinke@uni-rostock.de

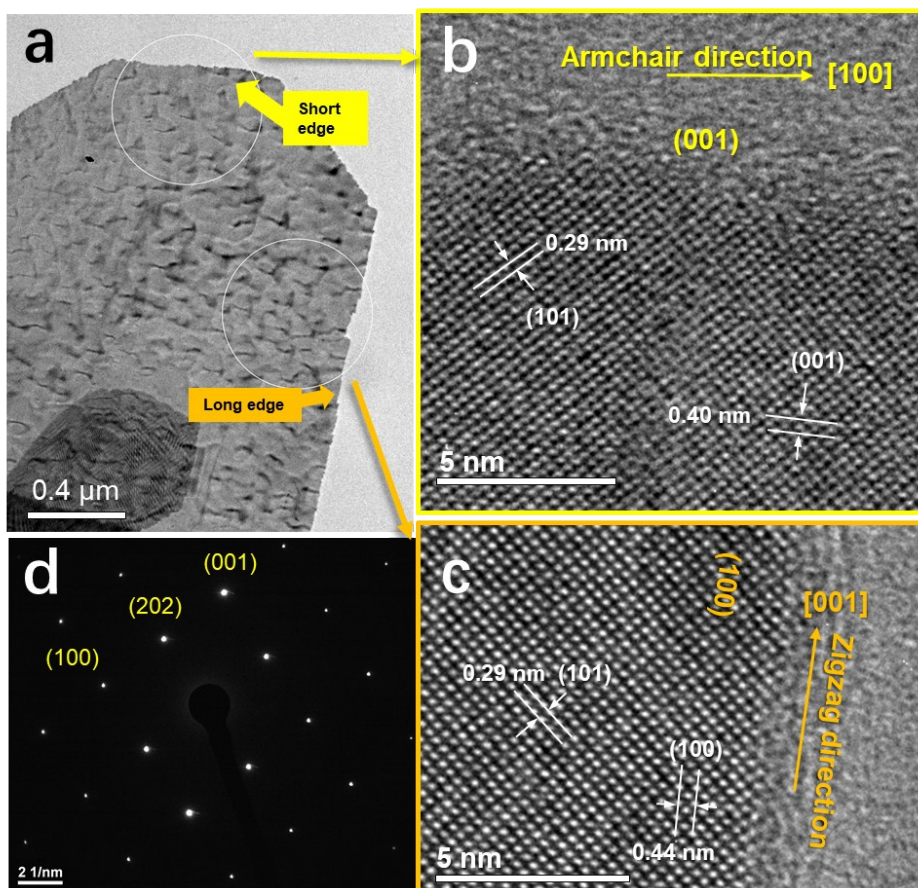


Figure S1. High-resolution transmission electron microscopy (HRTEM) characterization. (a) A TEM image of the SnS nanosheet selected for the HRTEM investigations. (b) HRTEM image near the short edge. The lattice fringes with a d -spacing of 0.40 nm for the (001) plane (parallel to armchair direction) confirm the armchair direction along the short edge. (c) HRTEM image near the long edge. The lattice spacing of 0.44 nm for the (100) plane (parallel to the zigzag direction) validates the zigzag direction along the long edge of the SnS sheet. (d) The selected area electron diffraction pattern (SAED) demonstrates that the obtained sheets are single crystals.