

Supplementary Information for

**Multifunctional Skin-like Wearable Optical Sensor Based on Optical
Micro/nanofibre**

Jing Pan,^a Zhang Zhang,^a Chengpeng Jiang,^b Lei Zhang *^{a b} and Limin Tong*^a

^aState Key Laboratory of Modern Optical Instrumentation, College of Optical Science and
Engineering, Zhejiang University, Hangzhou, 310027

^bResearch Center for Intelligent Sensing, Zhejiang Lab, Hangzhou 311121

E-mail: zhang_lei@zju.edu.cn; phytong@zju.edu.cn

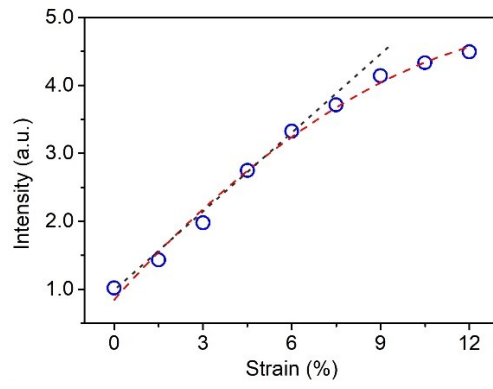


Fig. S1 Optical intensity under various strains in the range of 0 to 12.5%.

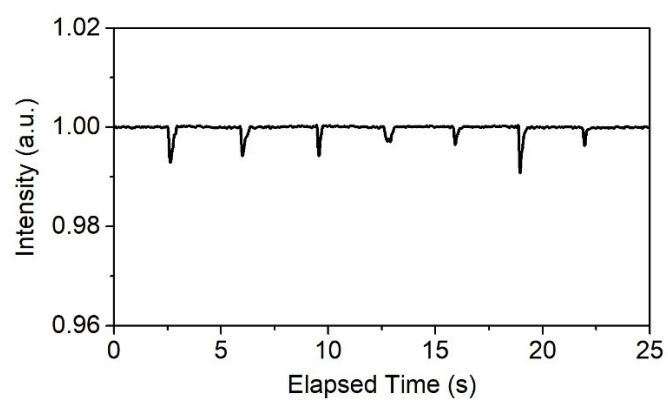


Fig. S2 Dynamic response of a SLWOS to body temperature and skin movement.