

## Supplementary Information

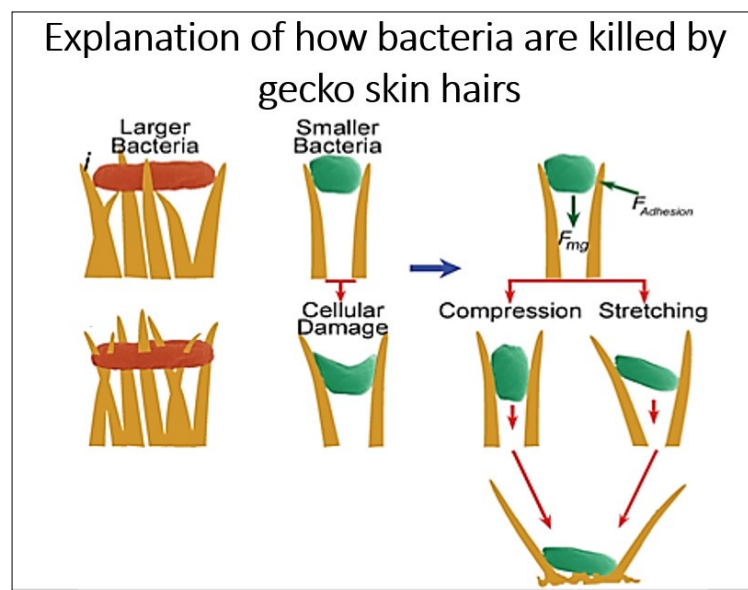


Figure A.

(Source: Nanoscale, 2016, 8, 18860)

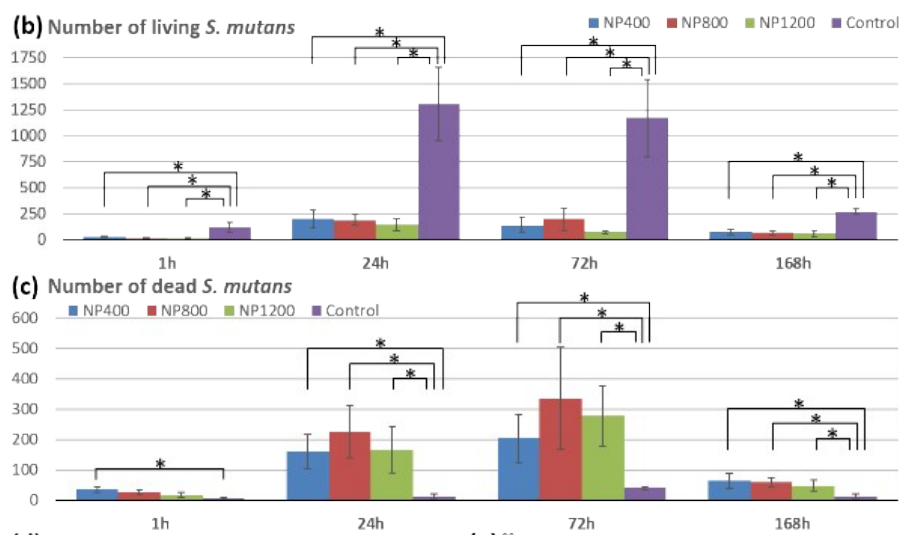


Figure 1. CLSM counts of dead and alive *S. mutans* on the different surface arrays compared to a smooth surface.

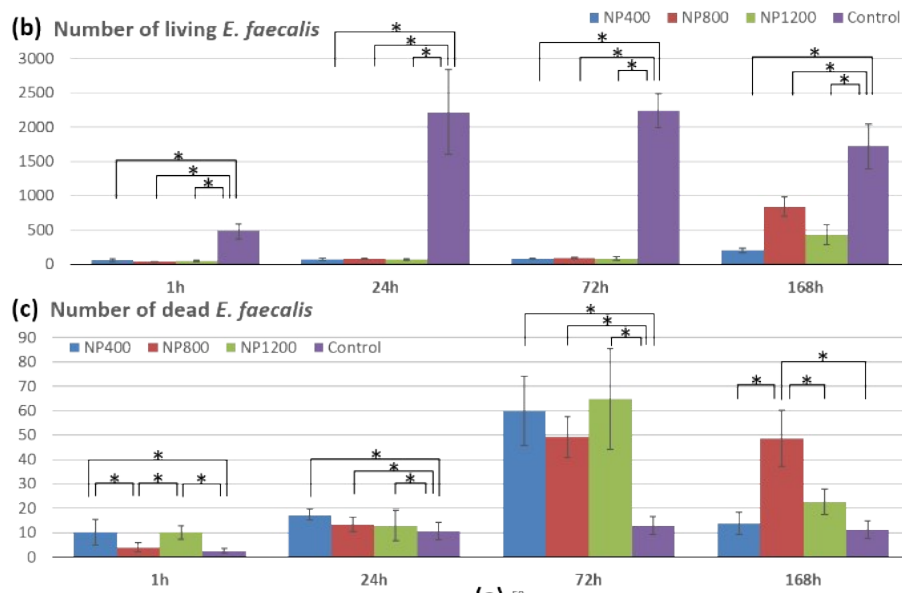


Figure 2. CLSM counts of dead and alive *E. faecalis* on the different surface arrays compared to a smooth surface.

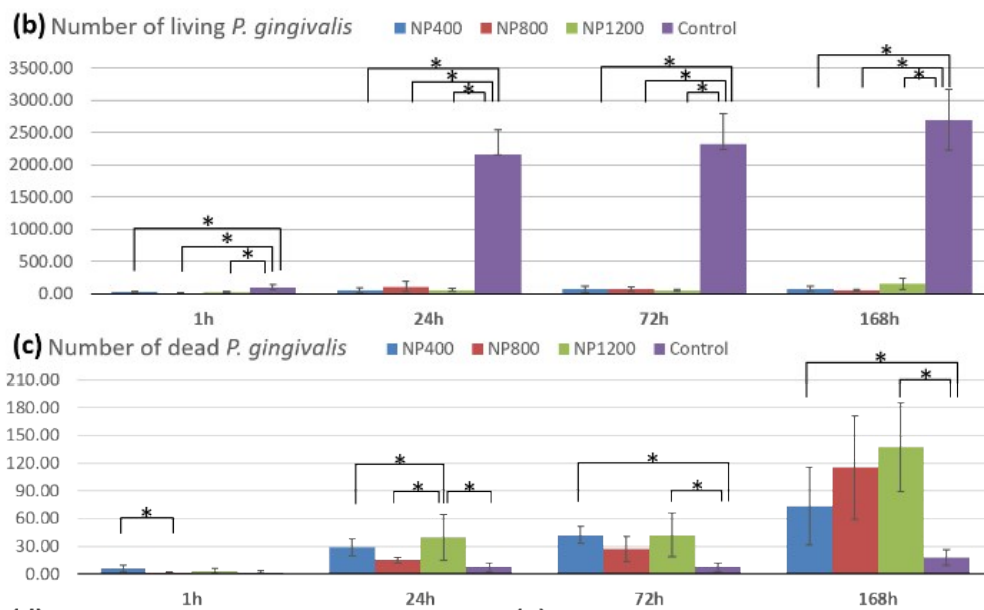


Figure 3. CLSM counts of dead and alive *P. gingivalis* on the different surface arrays compared to a smooth surface.

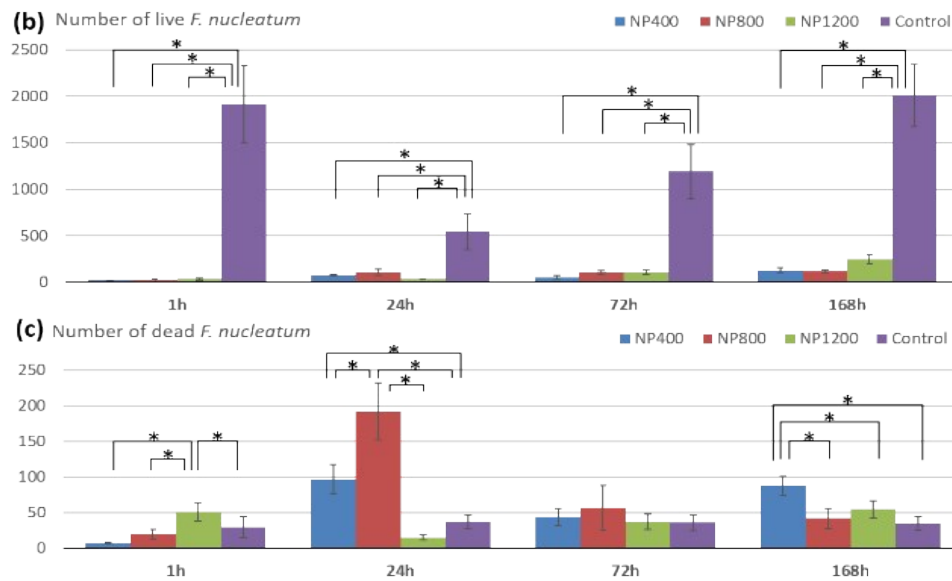


Figure 4. CLSM counts of dead and alive *F. nucleatum* on the different surface arrays compared to a smooth surface.

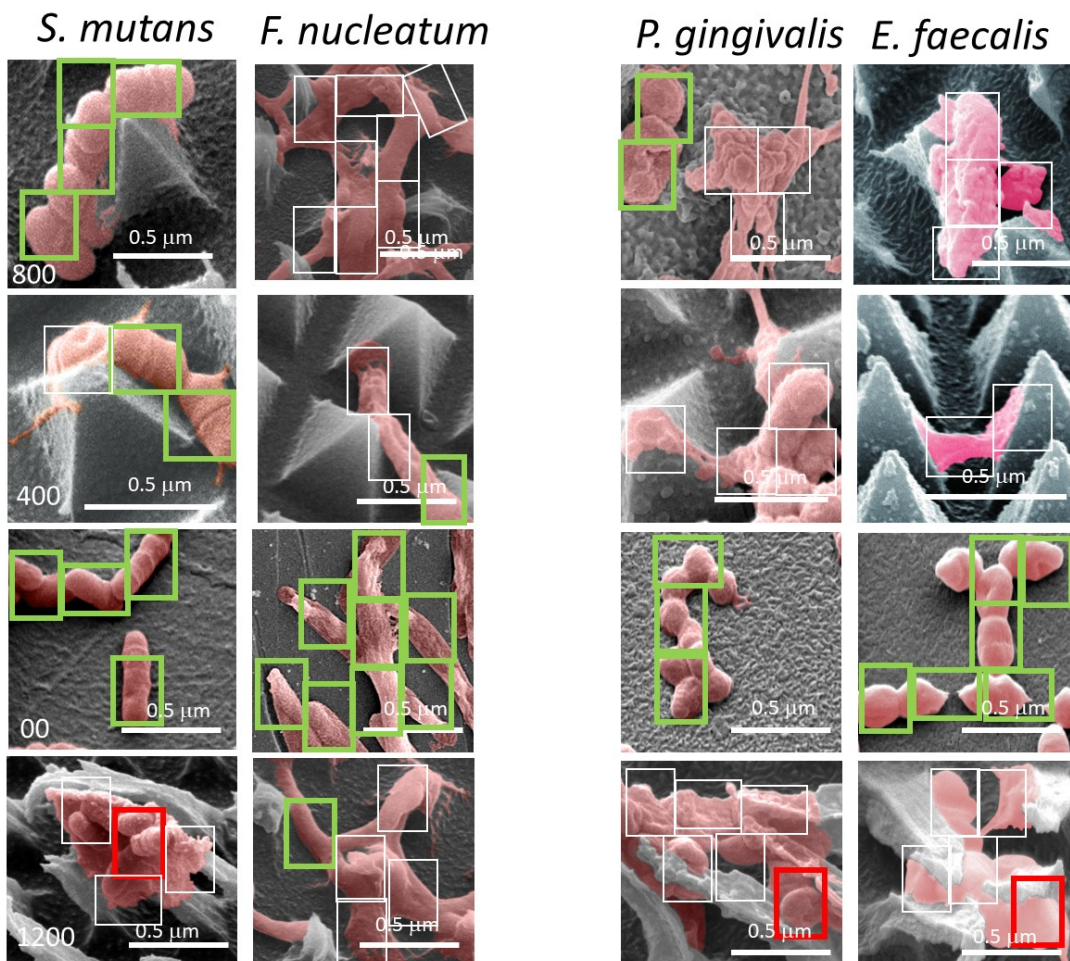


Figure 5. Contact areas for live and dead bacteria on the different pyramid arrays differing by aspect ratio.

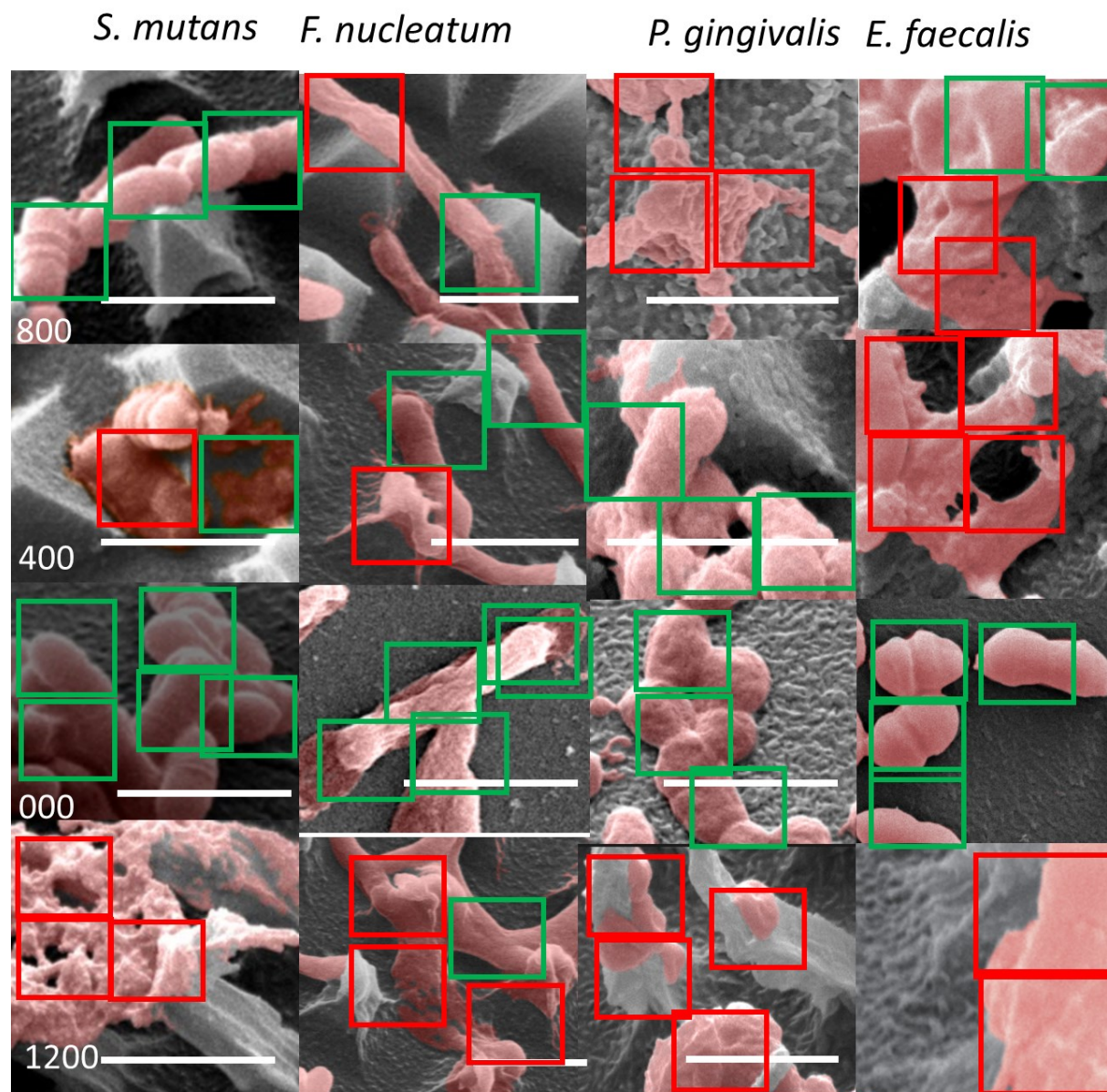


Figure 6. More contact areas for live and dead bacteria on the different pyramid arrays differing by aspect ratio.



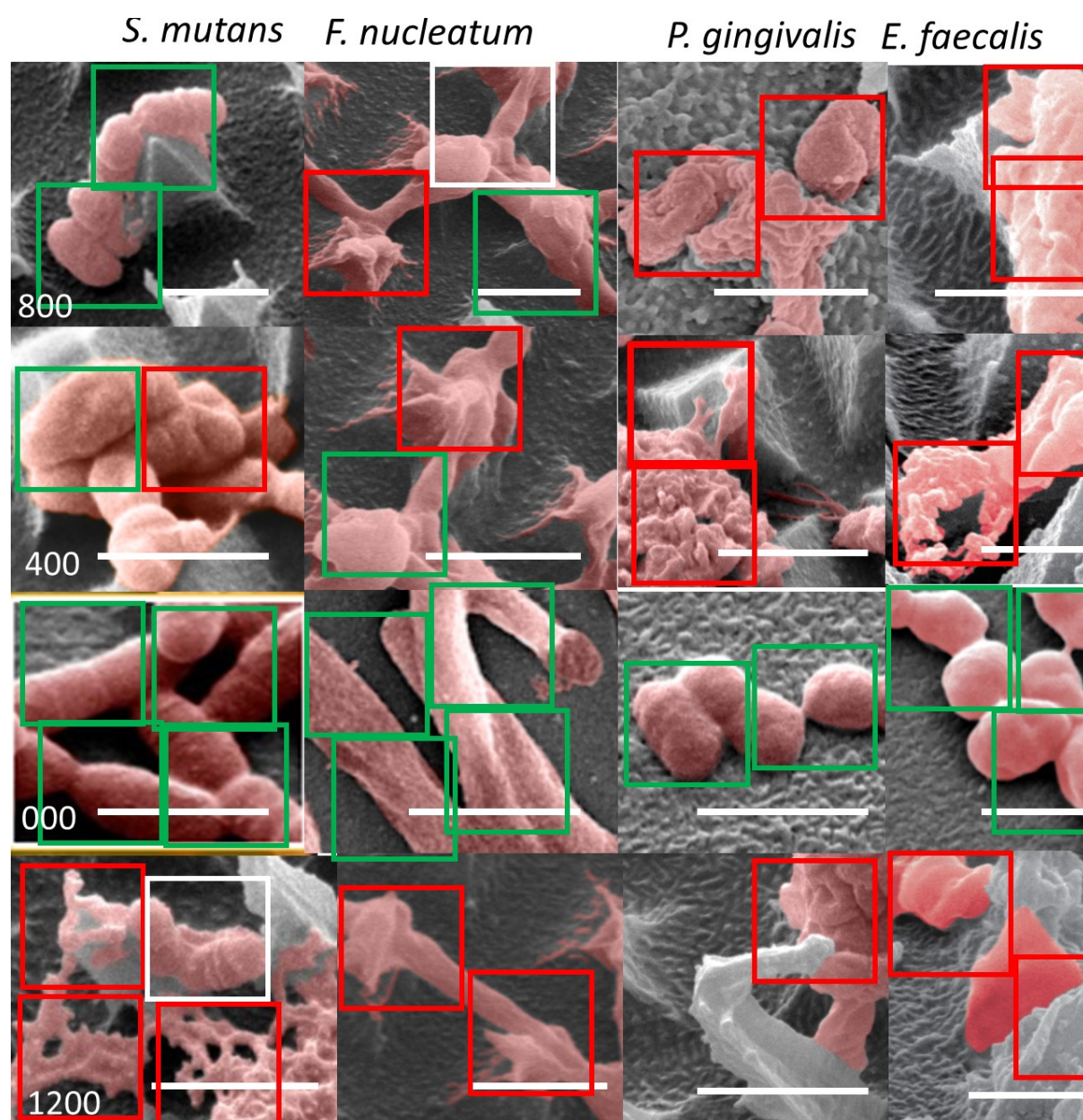


Figure 7. Furthermore contact areas for live and dead bacteria on the different pyramid arrays differing by aspect ratio.