

Support information

Intercalation and delamination of Ti_2SnC with high lithium ion storage capacity

Haijiang Wu^{a,b,*}, Jiale Zhu^{a,b,c,*}, Liang liu^c, Kequan Cao^c, Dan Yang^c, Chen Gong^{a,b,c}, Hao Lei^c, Hongyan Hang^c, Wei Yao^c, Jianguang Xu^{c,*}

^aSchool of Mechanical and Energy Engineering, Shaoyang University, Shaoyang, Hunan 422000, PR China

^bKey Laboratory of Hunan Province for Efficient Power System and Intelligent Manufacturing, Shaoyang University, Shaoyang, Hunan 422000, PR China

^cSchool of Materials Science and Engineering, Yancheng Institute of Technology, Yancheng, Jiangsu 224051, PR China

* Corresponding author.

E-mail address: jgxu@163.com (J. X)

E-mail address: haijiang_wu@126.com (H. W)

E-mail address: 18574476606@163.com (J. Z)

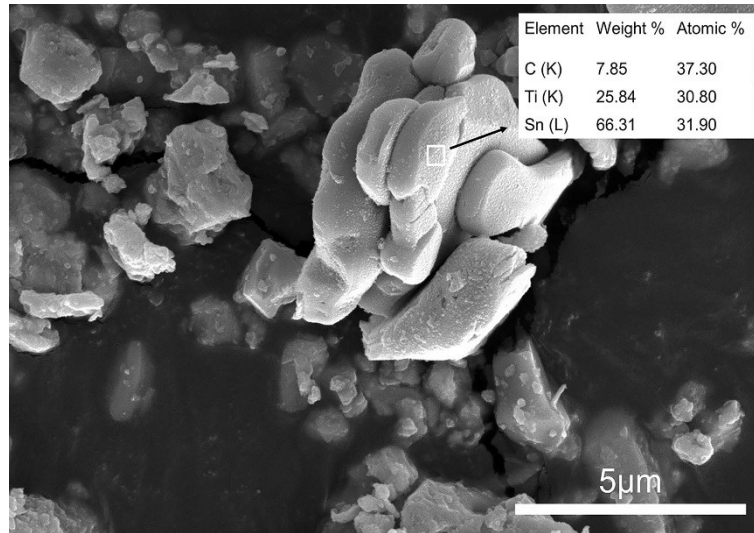


Figure S1. SEM image of Ti_2SnC raw material with EDS result.

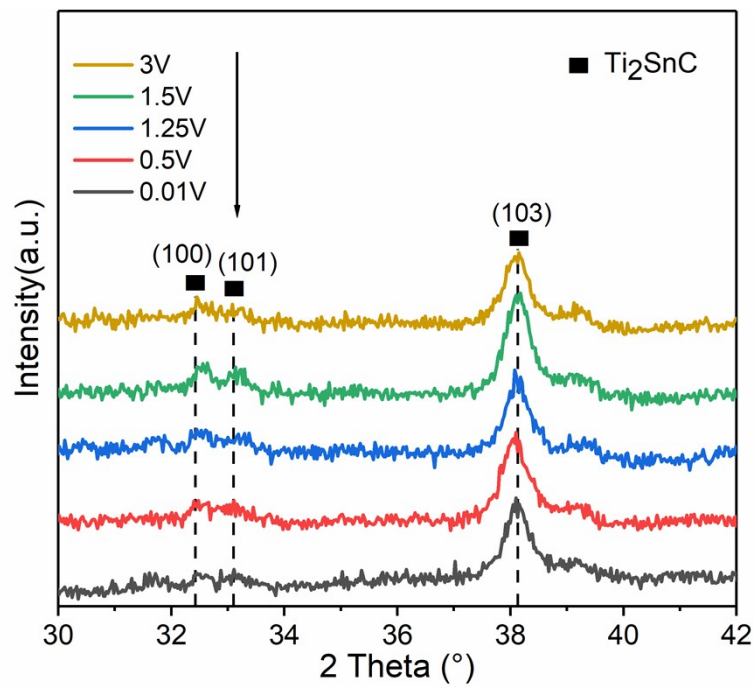


Figure S2. XRD patterns of n- Ti_2SnC at different voltages during the second discharge cycle.

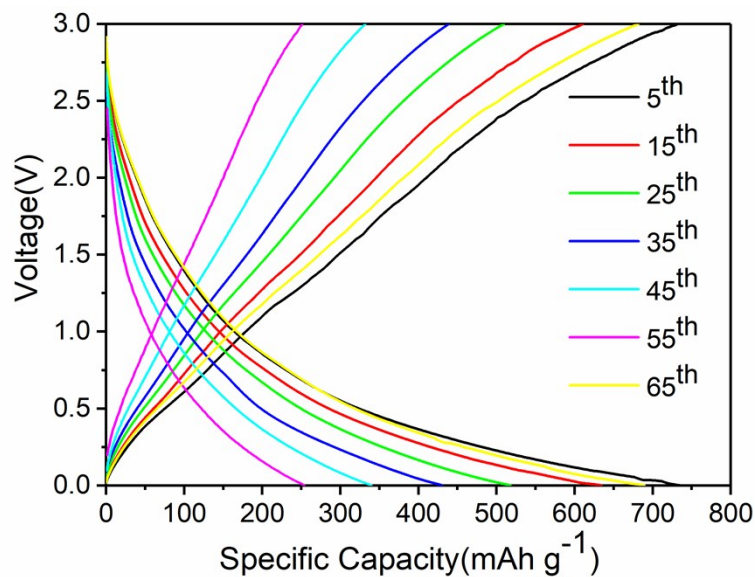


Figure S3. galvanostatic charge/discharge curve of n-Ti₂SnC after 1000 cycles under different current densities.

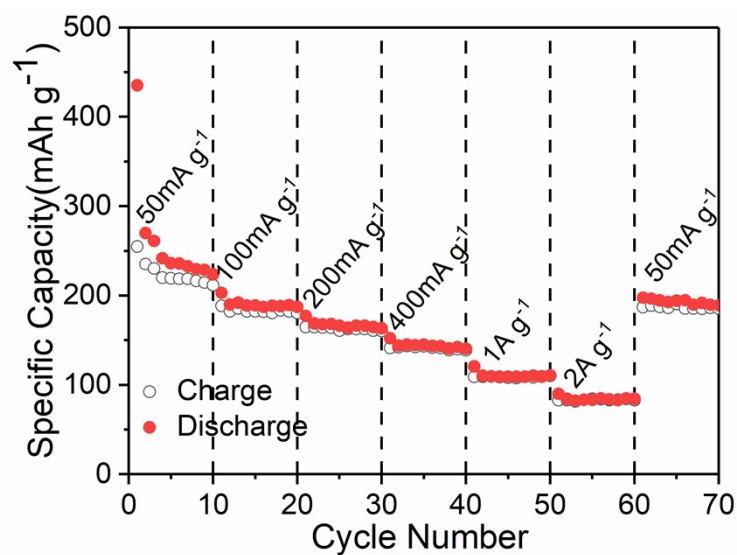


Figure S4. Rate performance curve of n-Ti₂SnC under different current densities.

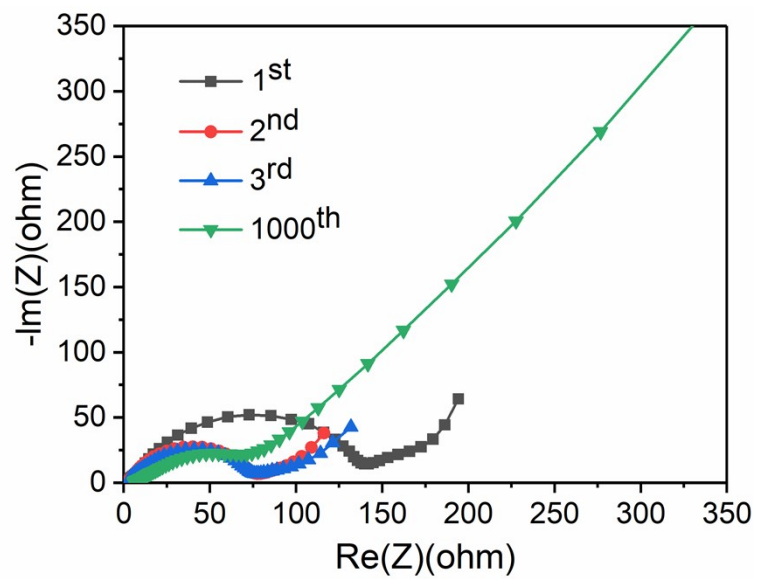


Figure S5. Nyquist curve of n-Ti₂SnC electrode.

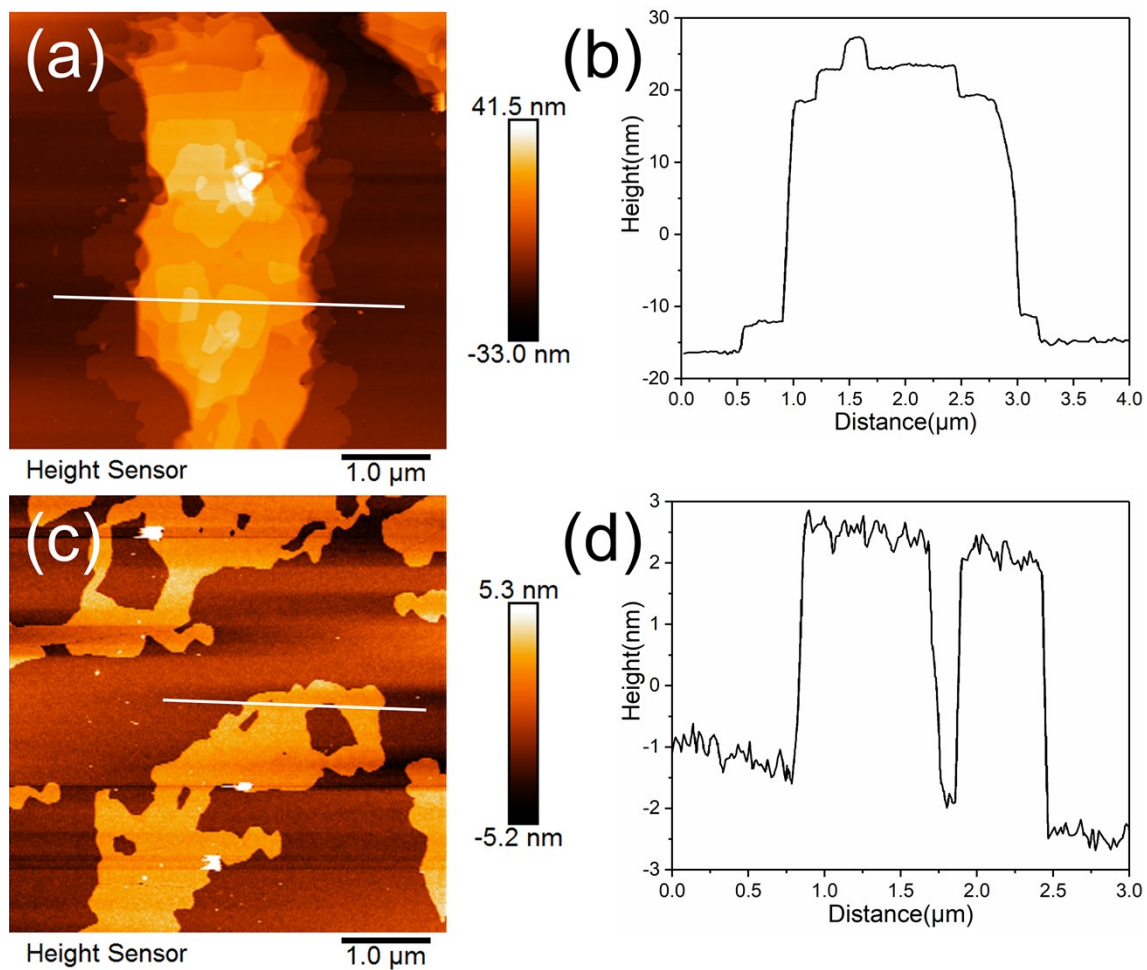


Figure S6. (a) AFM image of the original n-Ti₂SnC. (b) the corresponding height measurement. (c) AFM image of n-Ti₂SnC after 1000 charge/discharge cycles. (d) the corresponding height measurement.

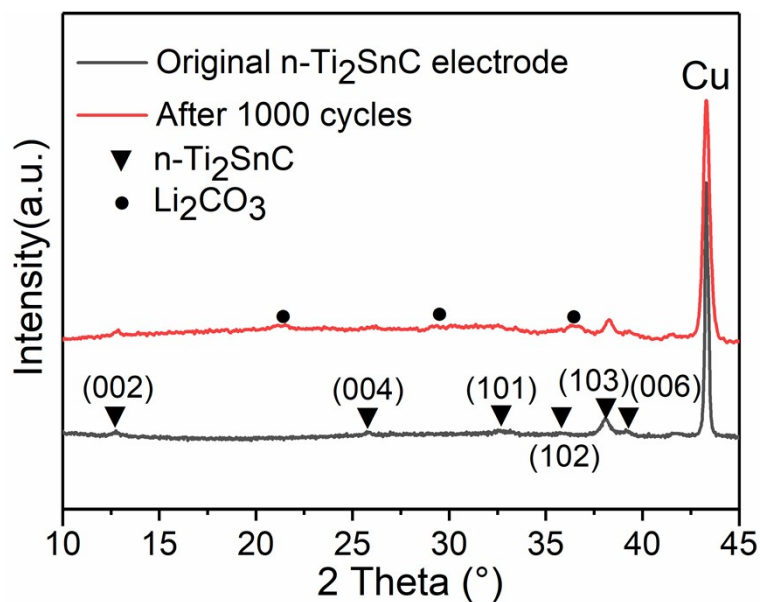


Figure S7. XRD of original n-Ti₂SnC and that after 1000 charge/discharge cycles.

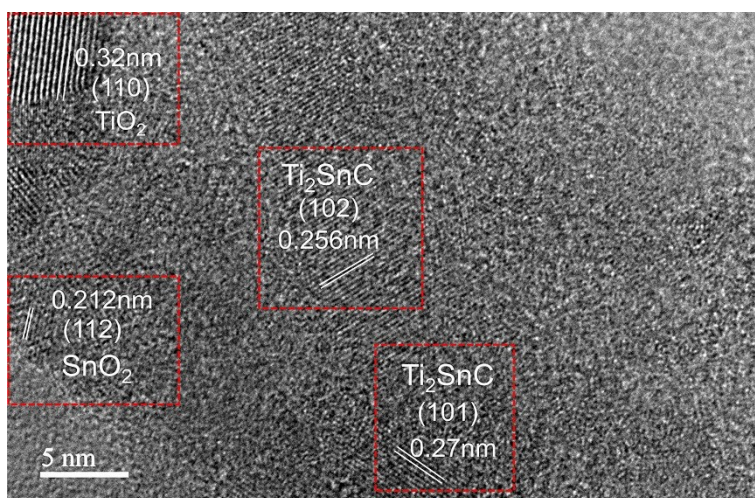


Figure S8. HRTEM image of the original n-Ti₂SnC.

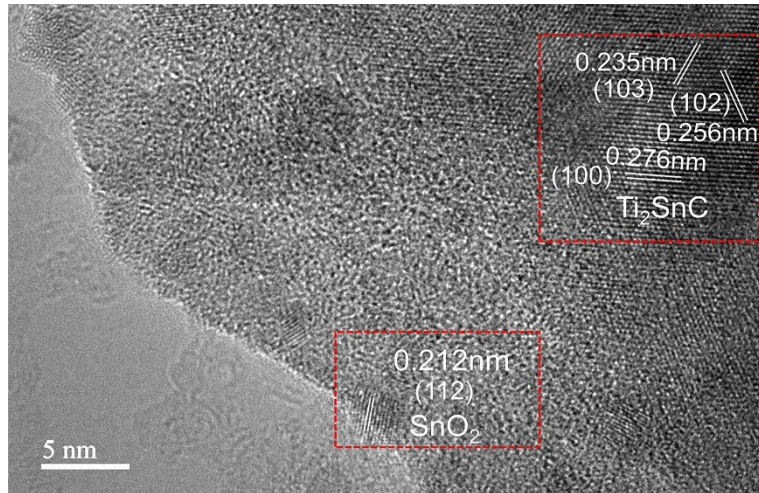


Figure S9. HRTEM image of n-Ti₂SnC after 1000 charge/discharge cycles.

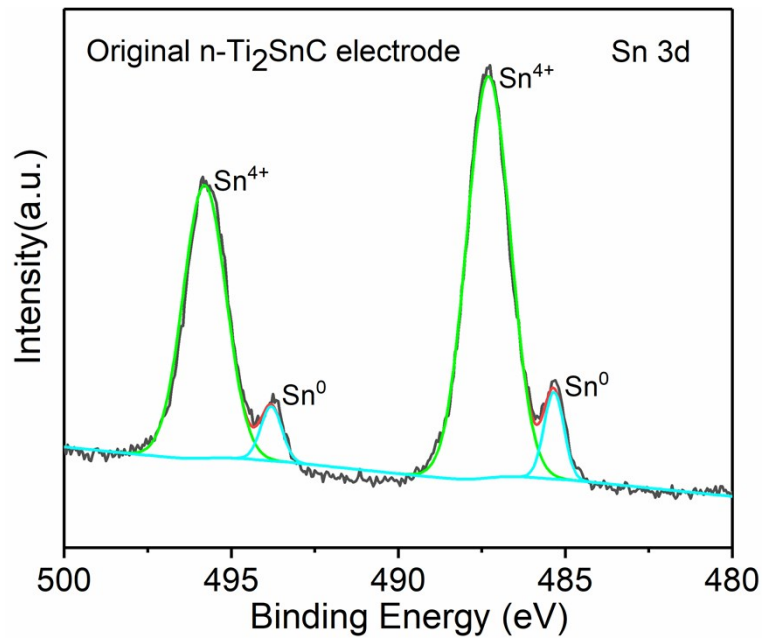


Figure S10. Sn 3d XPS of original n-Ti₂SnC electrode.

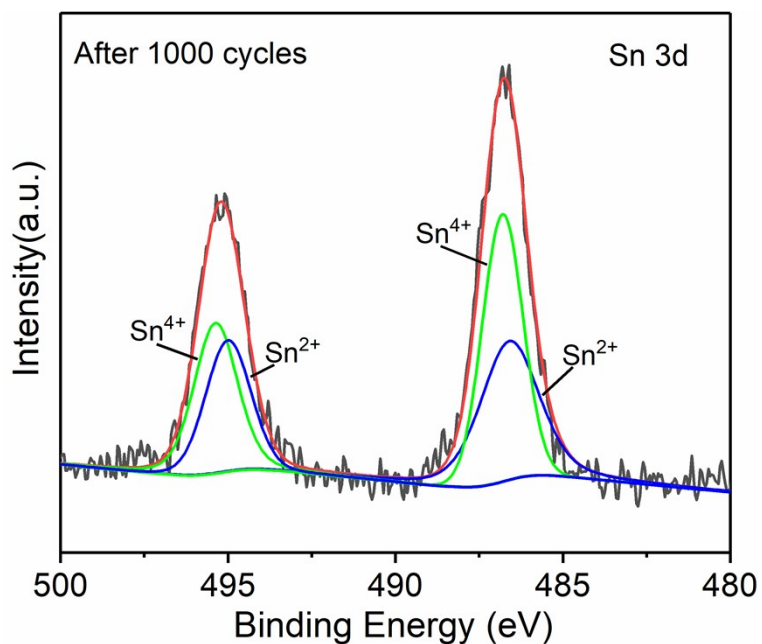


Figure S11. Sn 3d XPS of n-Ti₂SnC electrode after 1000 charge/discharge cycles.

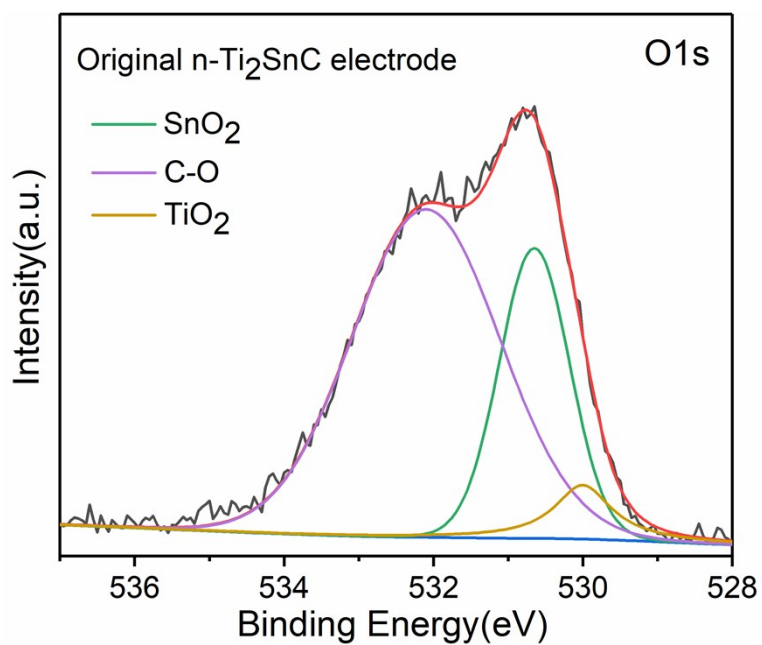


Figure S12. O 1s XPS of original n-Ti₂SnC electrode.

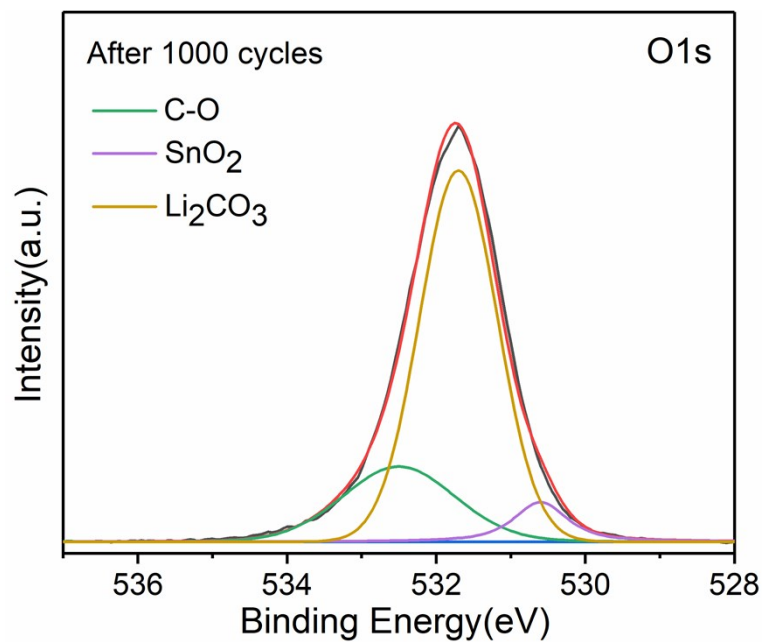


Figure S13. O 1s XPS of n-Ti₂SnC electrode after 1000 charge/discharge cycles.