

Supporting Information

Biodegradable FeWO_x Nanoparticles for CT/MR Imaging-Guided Synergistic Photothermal, Photodynamic and Chemodynamic Therapy

Yaru Cheng,^{‡ a, b, §} Huiting Lu,^{‡ c, §} Fan Yang,^{a, b} Yiyi Zhang,^{a, b} Haifeng Dong^{a, b, *}

^aResearch Center for Bioengineering and Sensing Technology, School of Chemistry and Bioengineering, University of Science & Technology Beijing, 30 Xueyuan Road, Beijing 100083, P. R. China

^bBeijing Advanced Innovation Center for Materials Genome Engineering, University of Science and Technology Beijing, Beijing 100083, P.R. China

^cDepartment of Chemistry, School of Chemistry and Bioengineering, University of Science and Technology Beijing, 30 Xueyuan Road, Beijing 100083, P. R. China

[§] Both authors contributed equally to this work.

*Email: hfdong@ustu.edu.cn

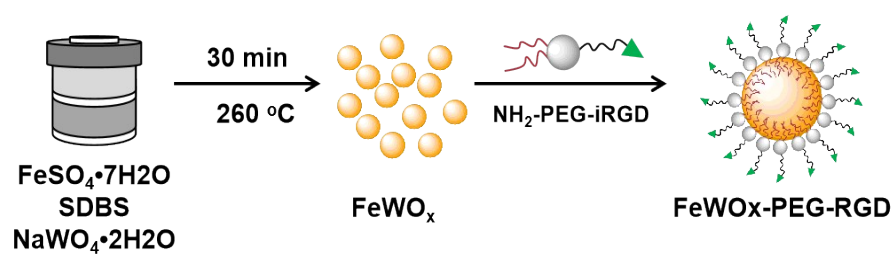


Figure S1. A scheme of the synthesis process of $\text{FeWO}_x\text{-PEG-RGD}$ NPs.

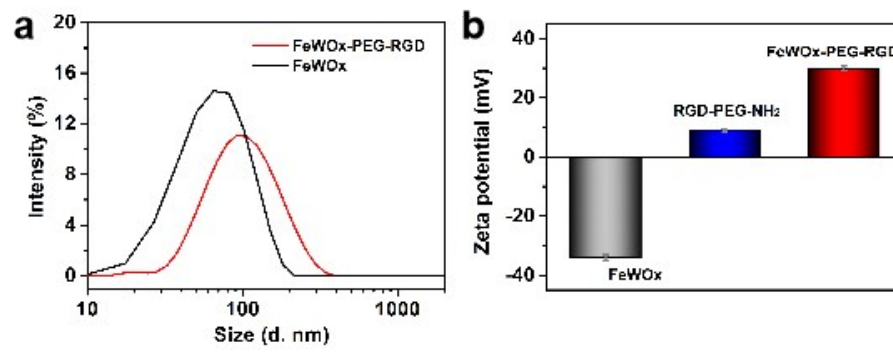


Figure S2. a) Dynamic light scattering (DLS) and b) zeta potential analysis of FeWO_x NPs and FeWO_x-PEG-RGD NPs.

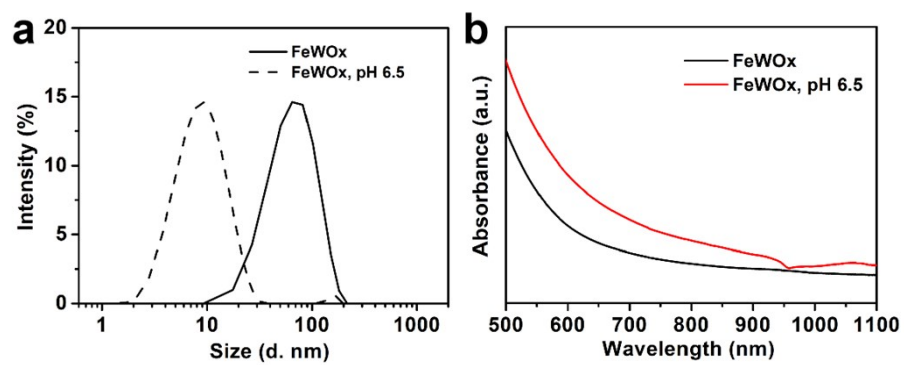


Figure S3. a) UV-vis absorption spectra of FeWO_x NPs before and after treatment in mimic TME for 24 h. b) DLS of FeWO_x NPs before and after treatment in mimic TME for 24 h.

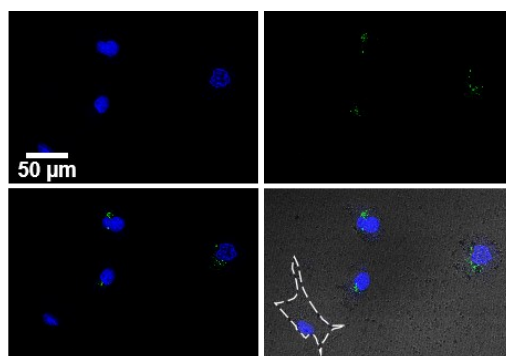


Figure S4. Confocal fluorescent microscopy images of FAM-labeled FeWO_x-PEG-RGD after incubating with MCF-7/NHDF cell lines (green = FAM-labeled FeWO_x-PEG-RGD, blue = nucleus; scale bar = 50 μm). The NHDF cells were surrounded by white boxes.

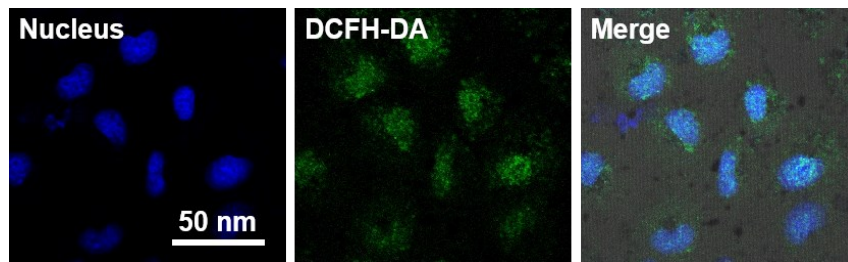


Figure S5. Confocal images of MCF-7 cells for intracellular ROS detection by ROS probe, DCFH-DA.

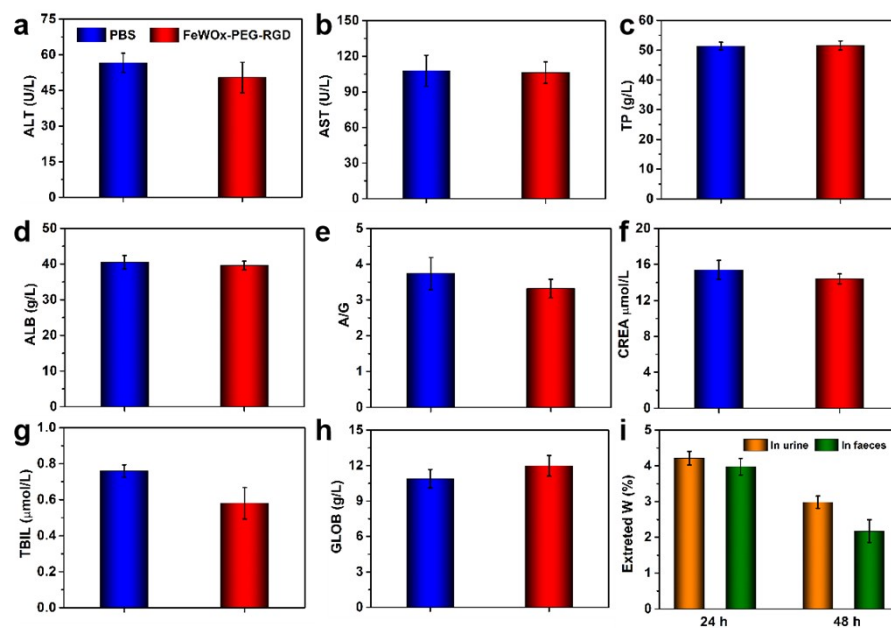


Figure S6. a-h) The serum biochemistry assay of FeWO_x-PEG-RGD NPs treated mice at a dose of 20 mg kg⁻¹ after intravenous injection 48 h. i) Accumulated W (in urine and stool) excretion out of the mice body after the injection of FeWO_x-PEG-RGD NPs through caudal vein for 24 h and 48 h.

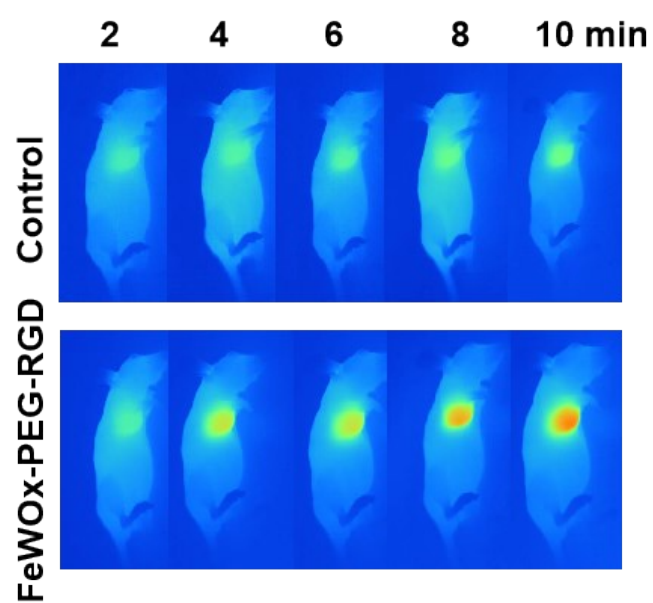


Figure S7. Infrared thermal images of tumor-bearing mice exposed to NIR laser (980 nm, 0.72 W cm^{-2}) for 10 min after intravenously injected with PBS (control) or $\text{FeWO}_x\text{-PEG-RGD}$ (20 mg kg^{-1}) for 24 h.

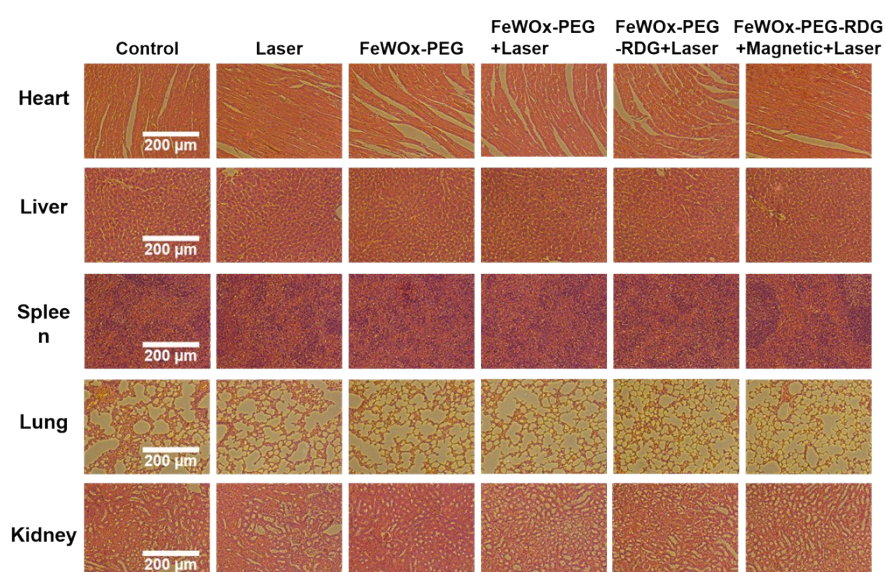


Figure S8. Histological data (H&E stained images) of the major organs (heart, liver, spleen, lung, and kidney) of mice received different treatments 16 days post injection (scale bars: 200 μ m).