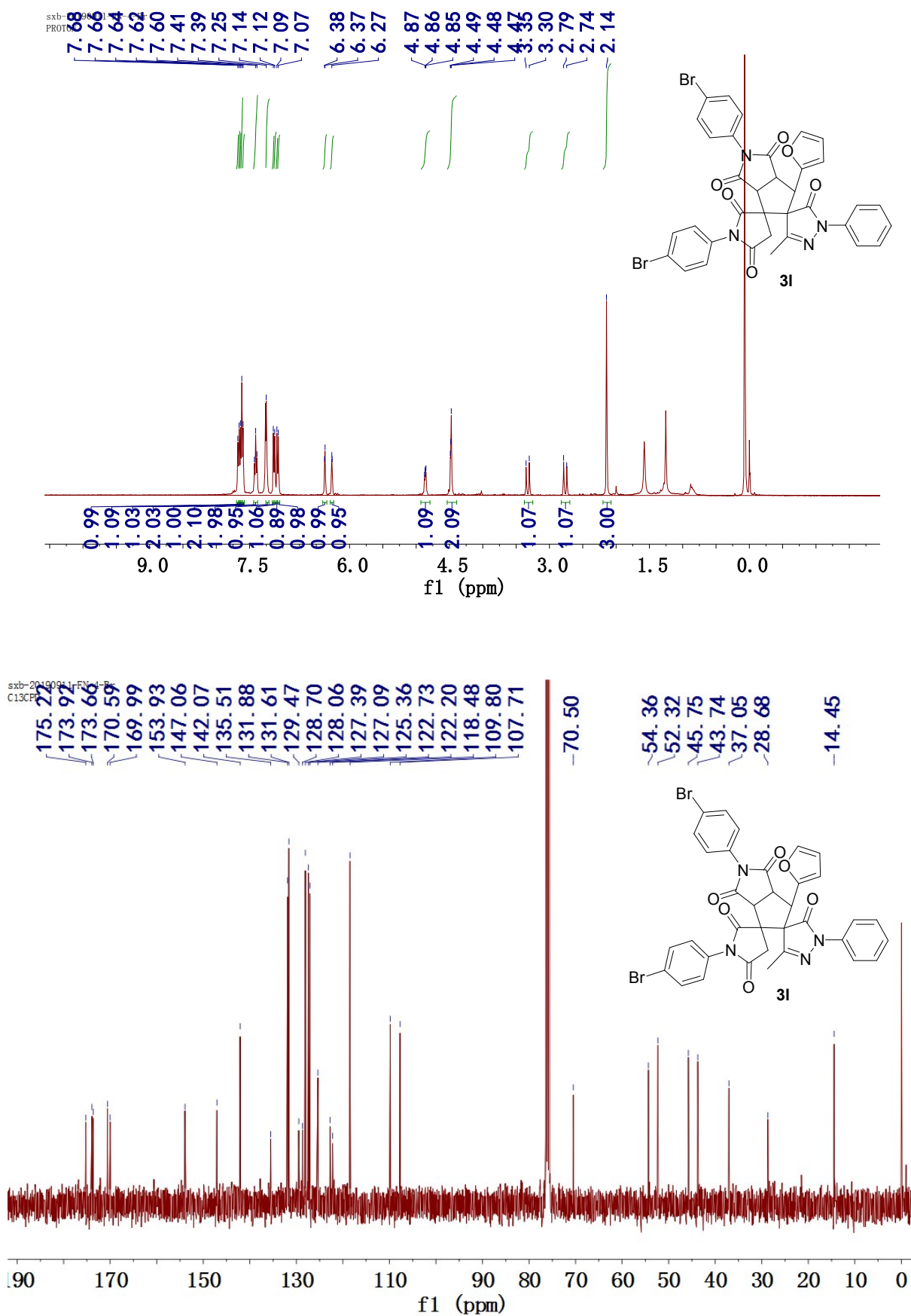
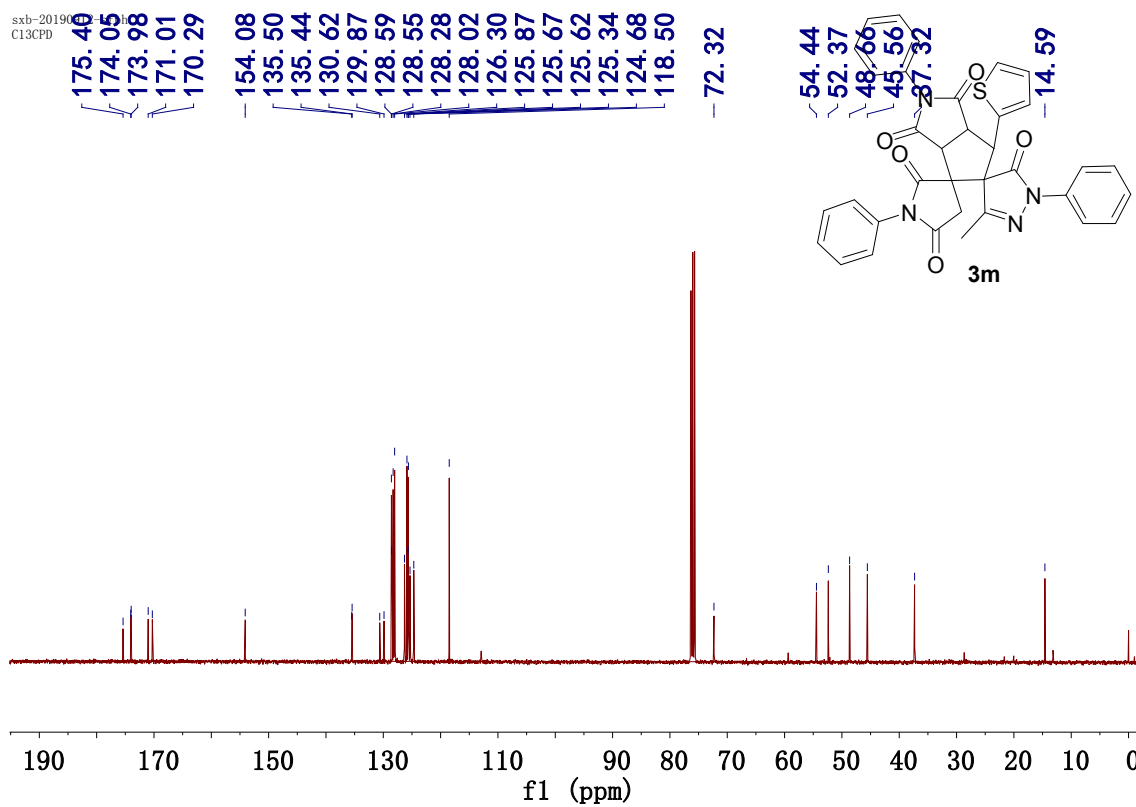
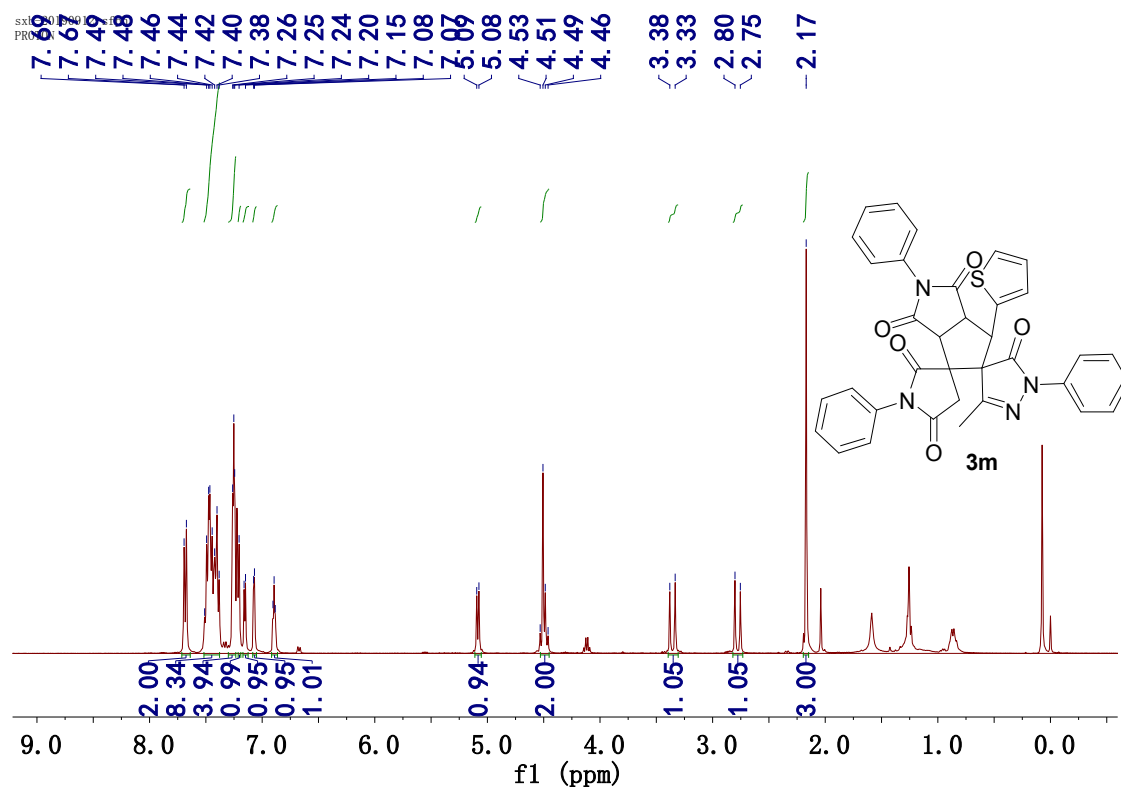


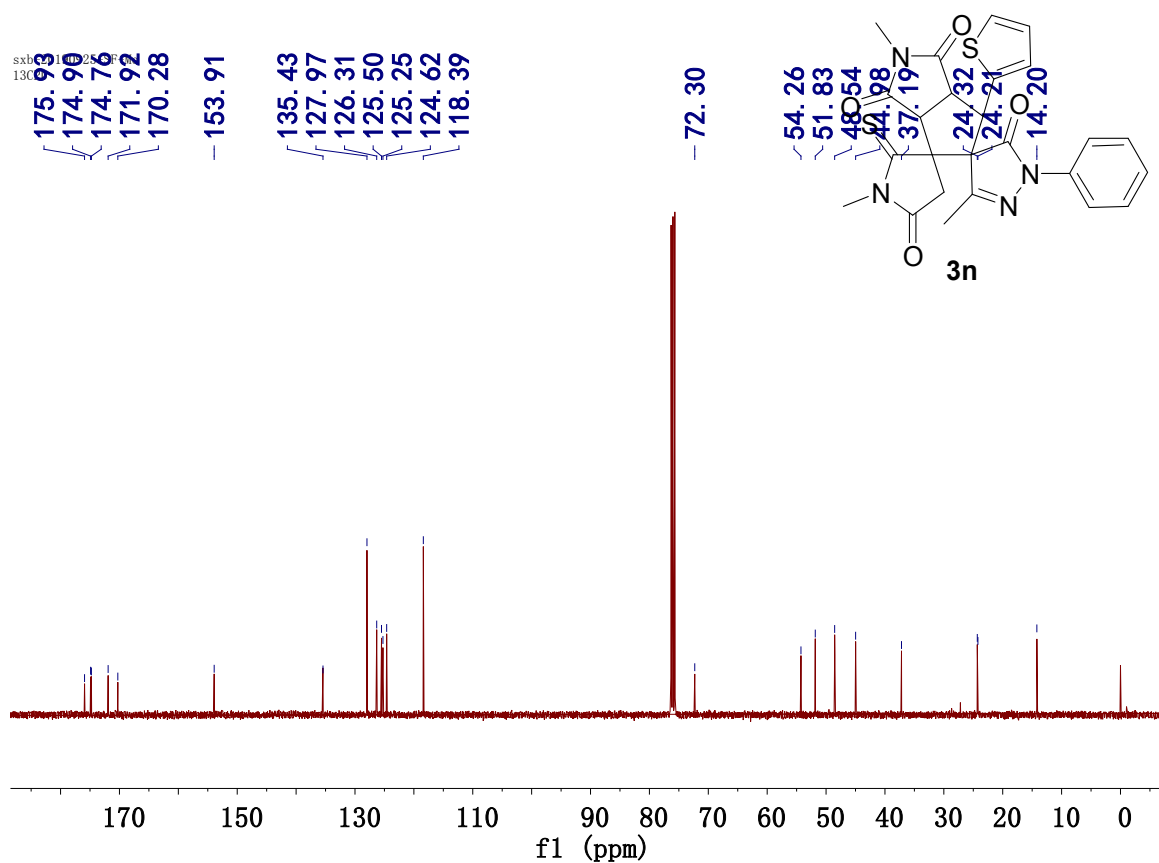
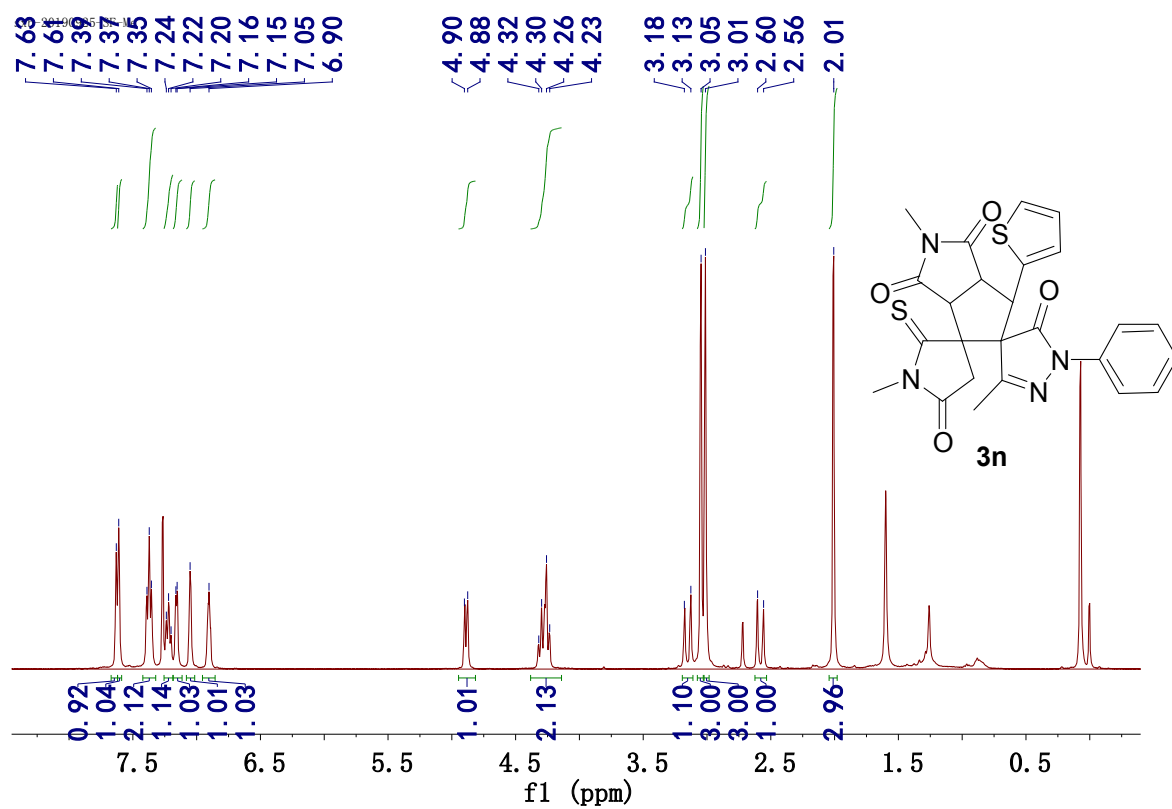
### $^1\text{H}$ and $^{13}\text{C}$ NMR of **3I**



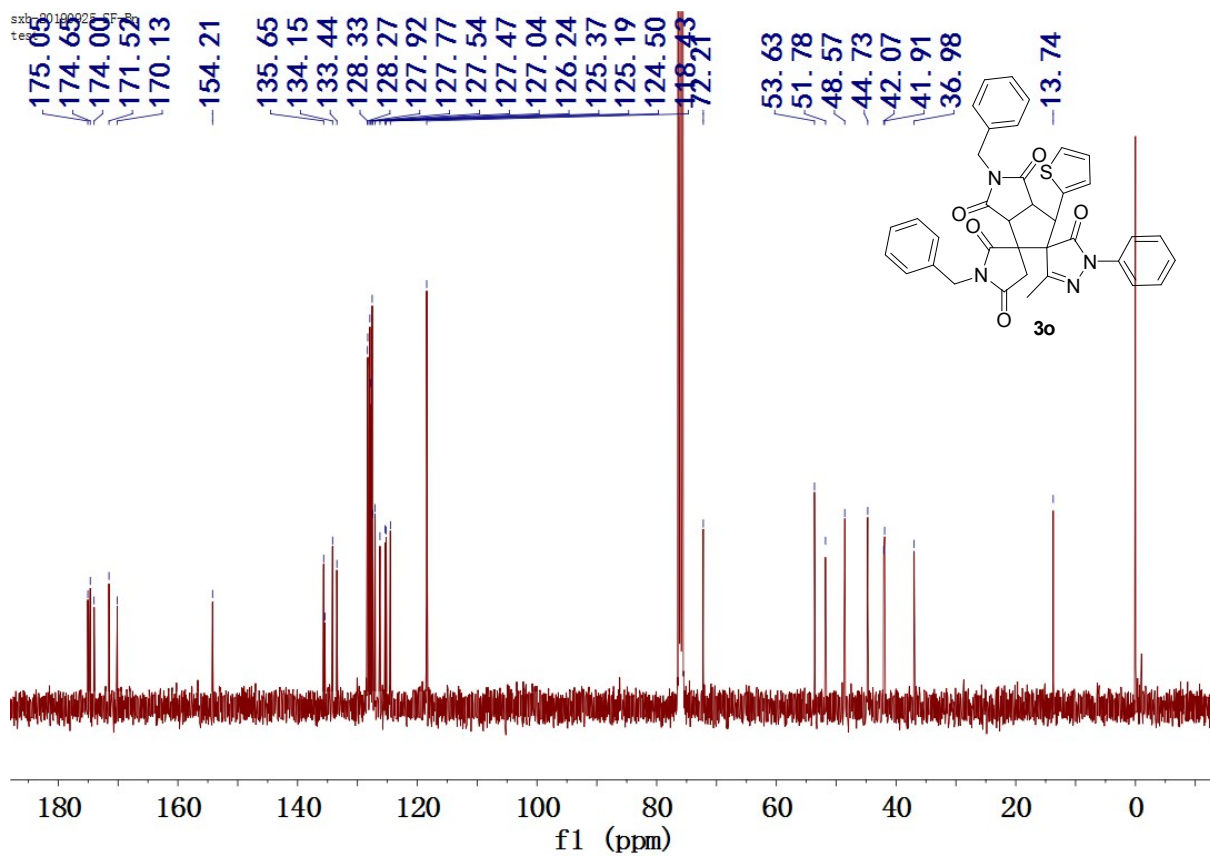
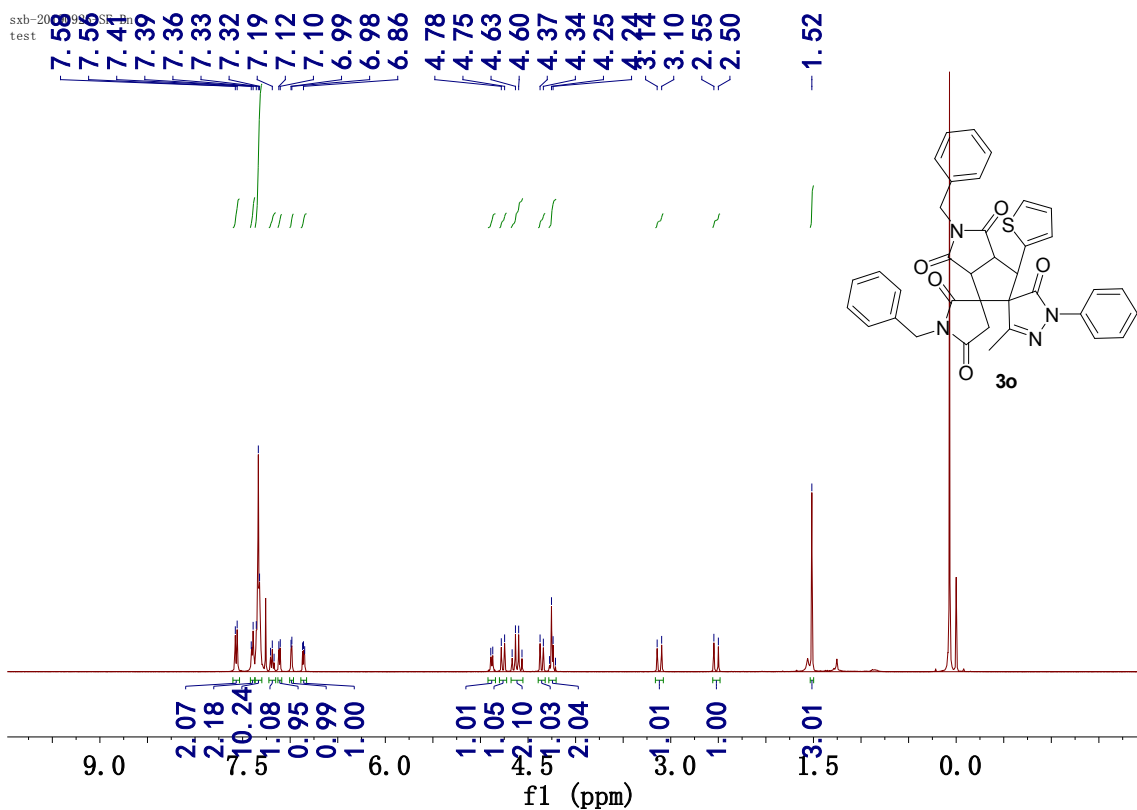
# $^1\text{H}$ and $^{13}\text{C}$ NMR of **3m**



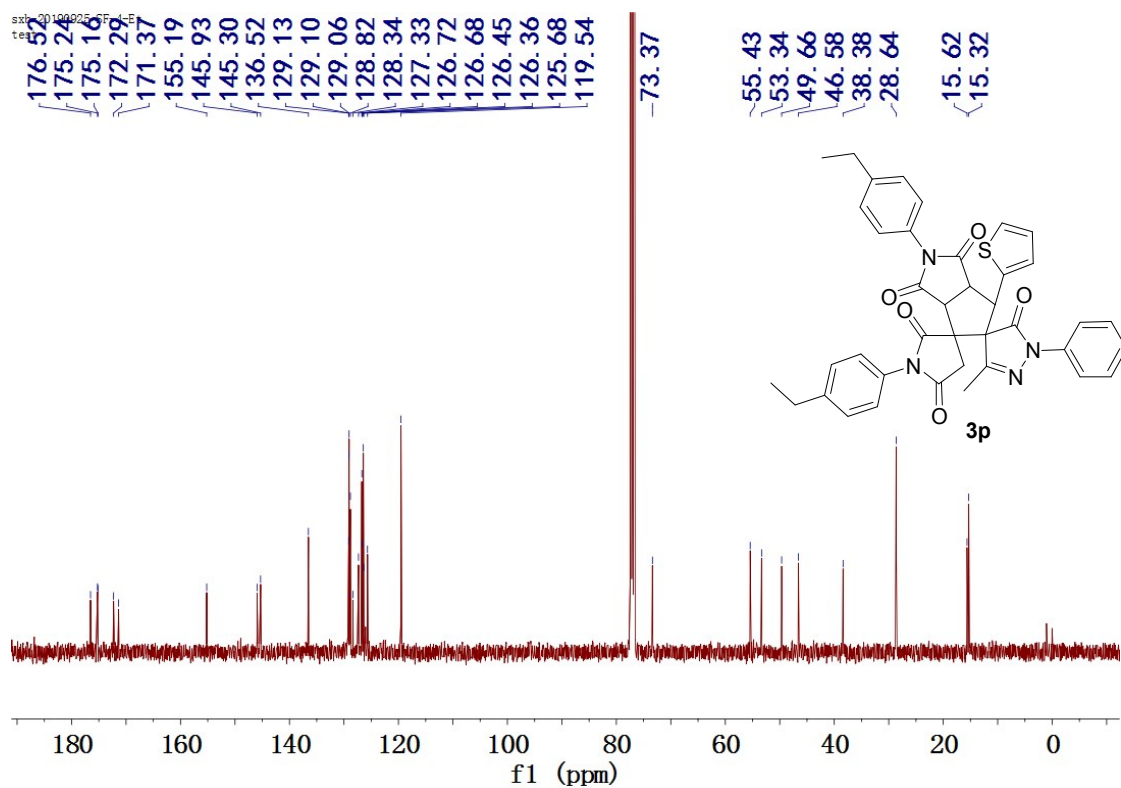
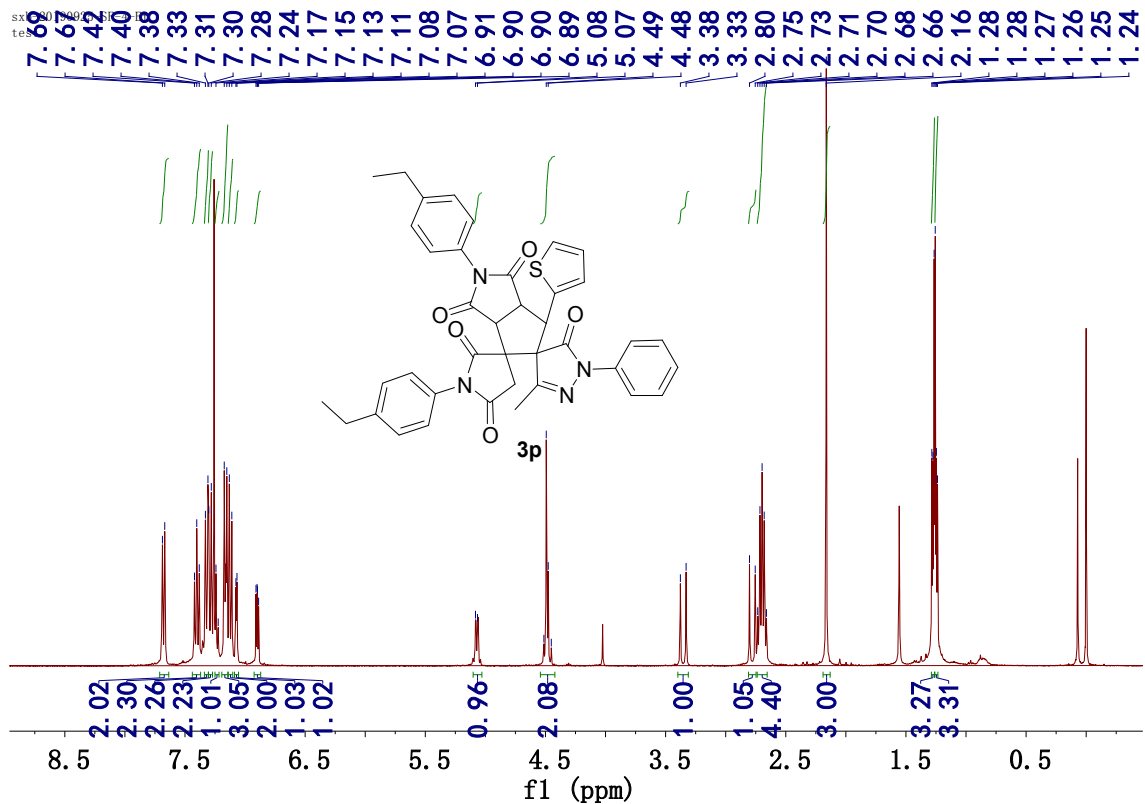
$^1\text{H}$  and  $^{13}\text{C}$  NMR of **3n**



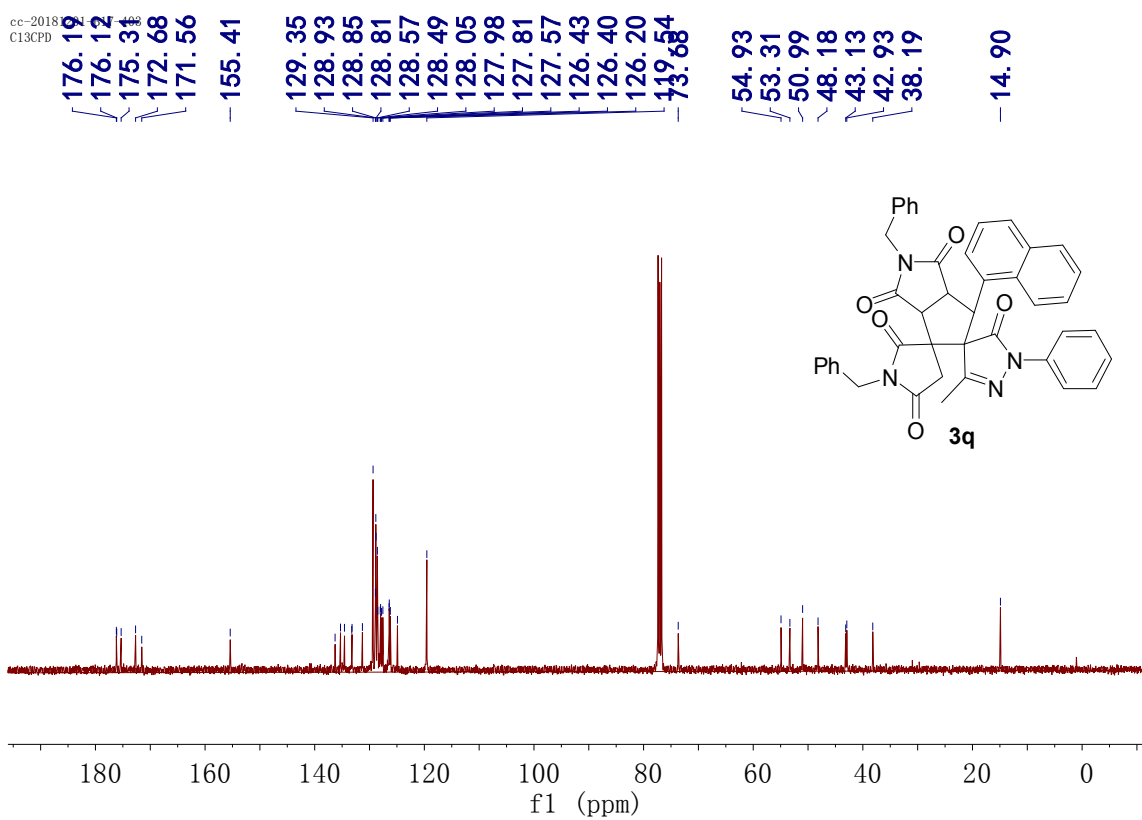
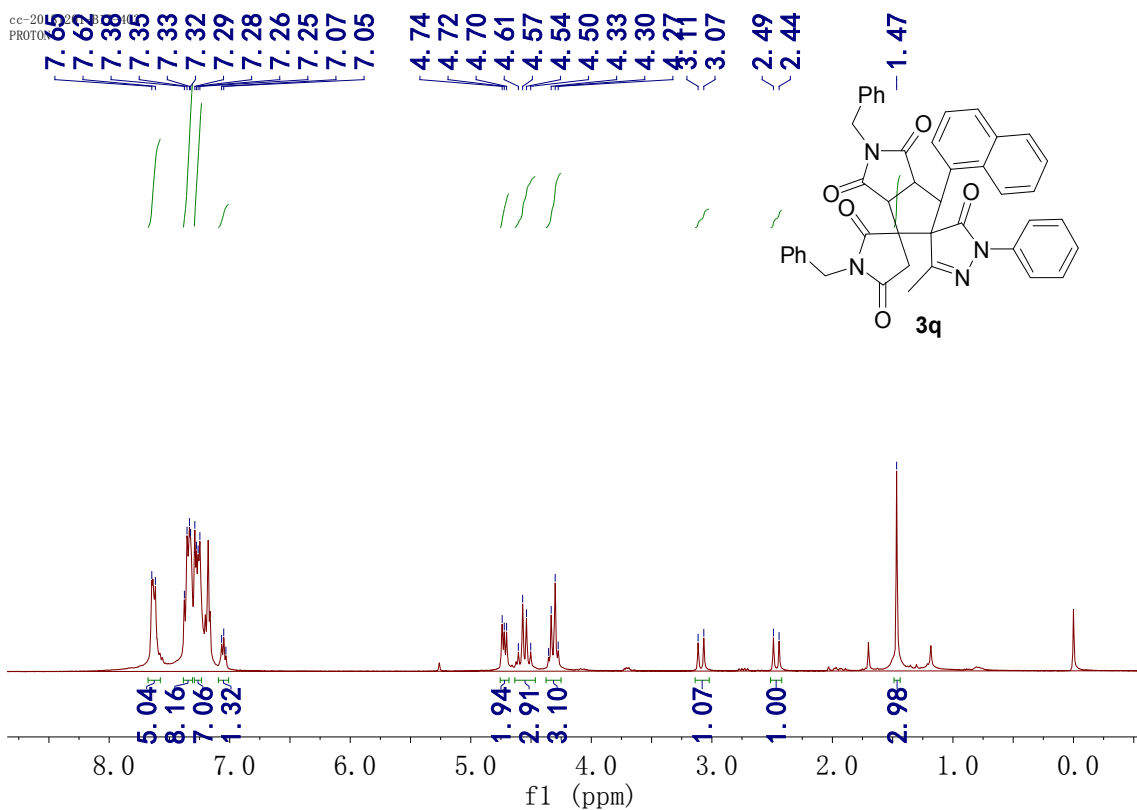
$^1\text{H}$  and  $^{13}\text{C}$  NMR of **3o**



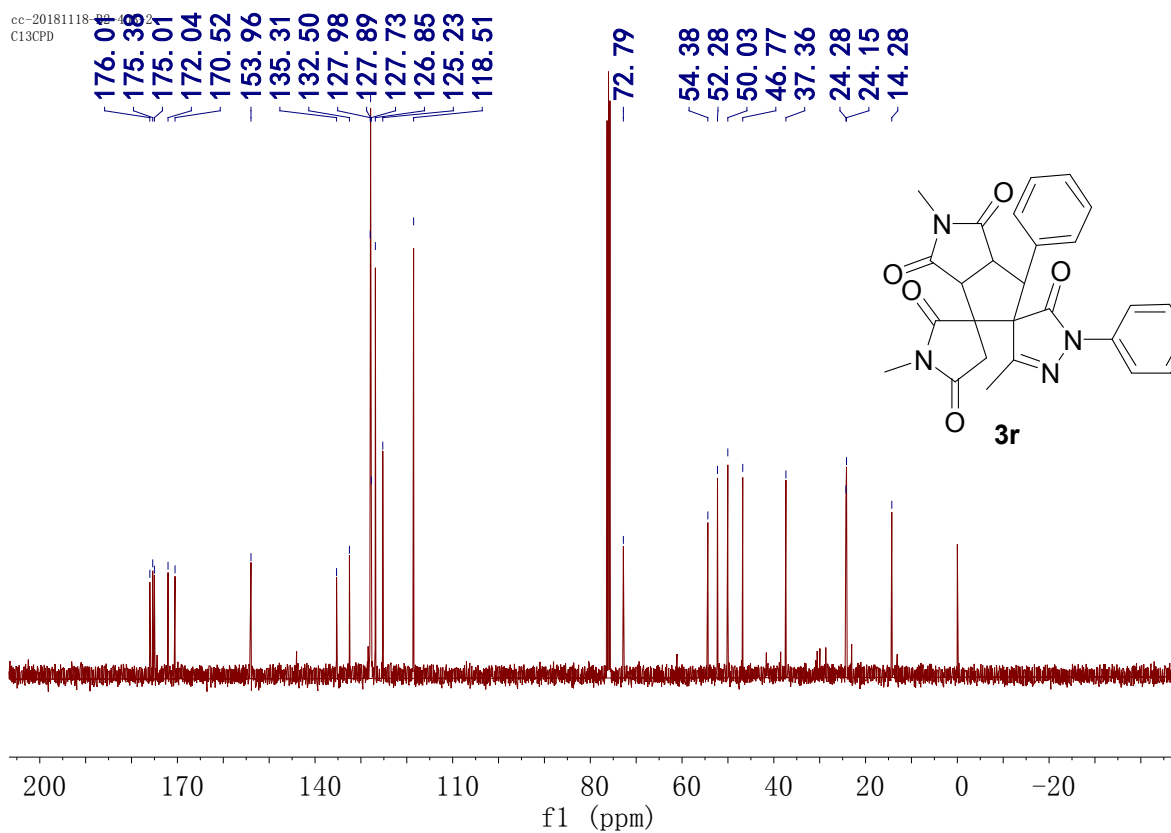
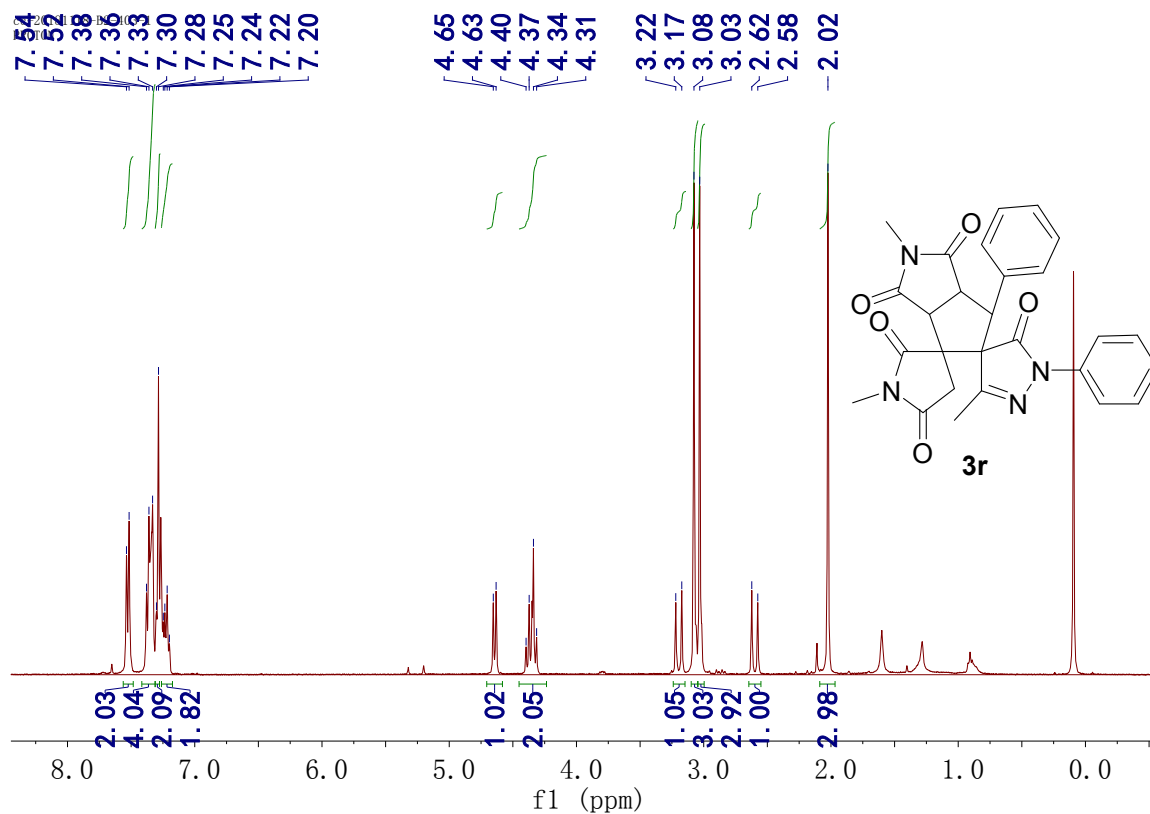
$^1\text{H}$  and  $^{13}\text{C}$  NMR of **3p**



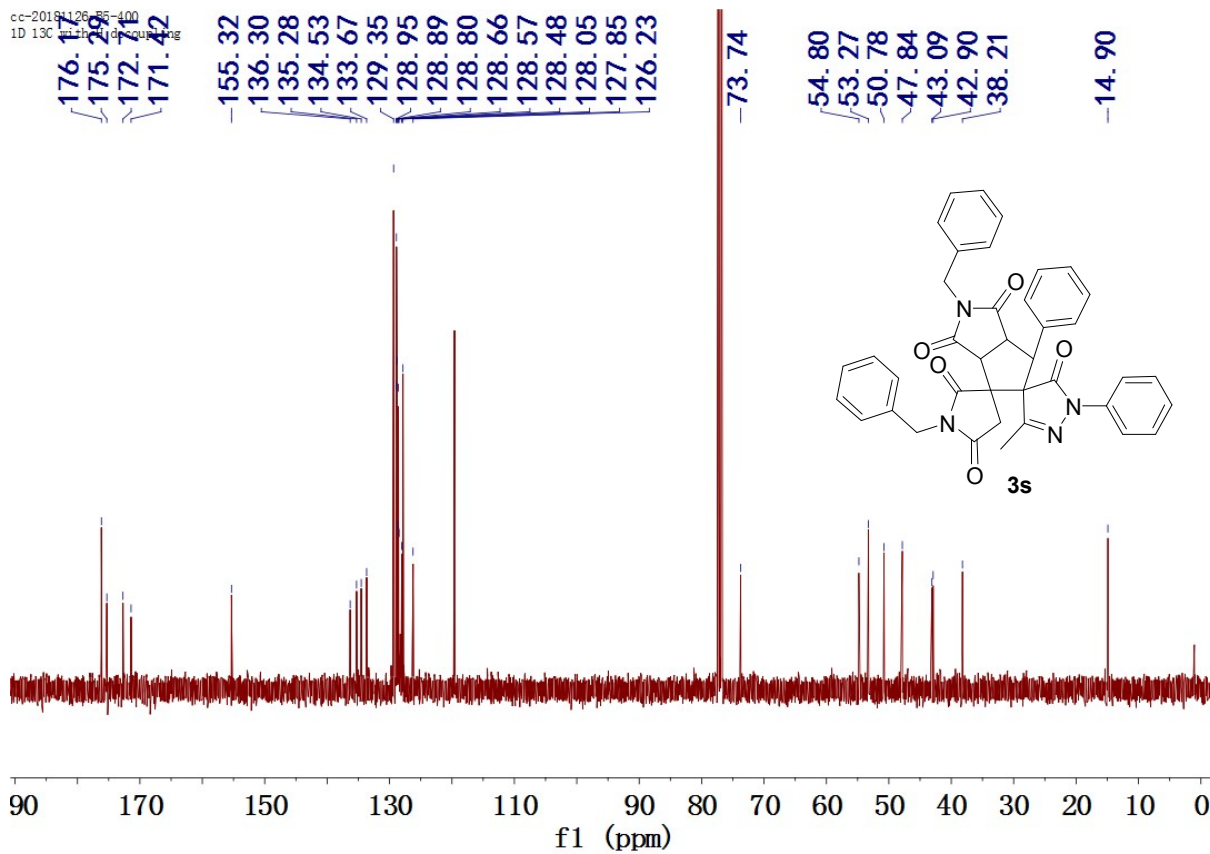
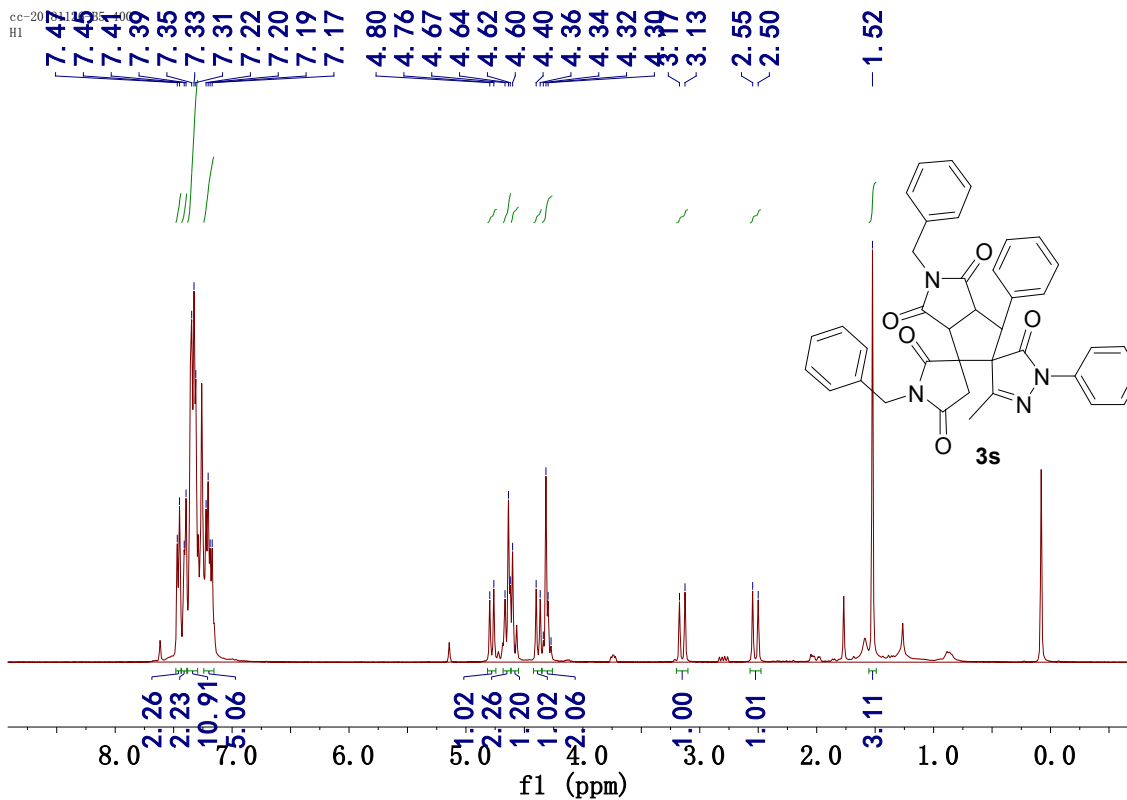
$^1\text{H}$  and  $^{13}\text{C}$  NMR of **3q**



$^1\text{H}$  and  $^{13}\text{C}$  NMR of **3r**

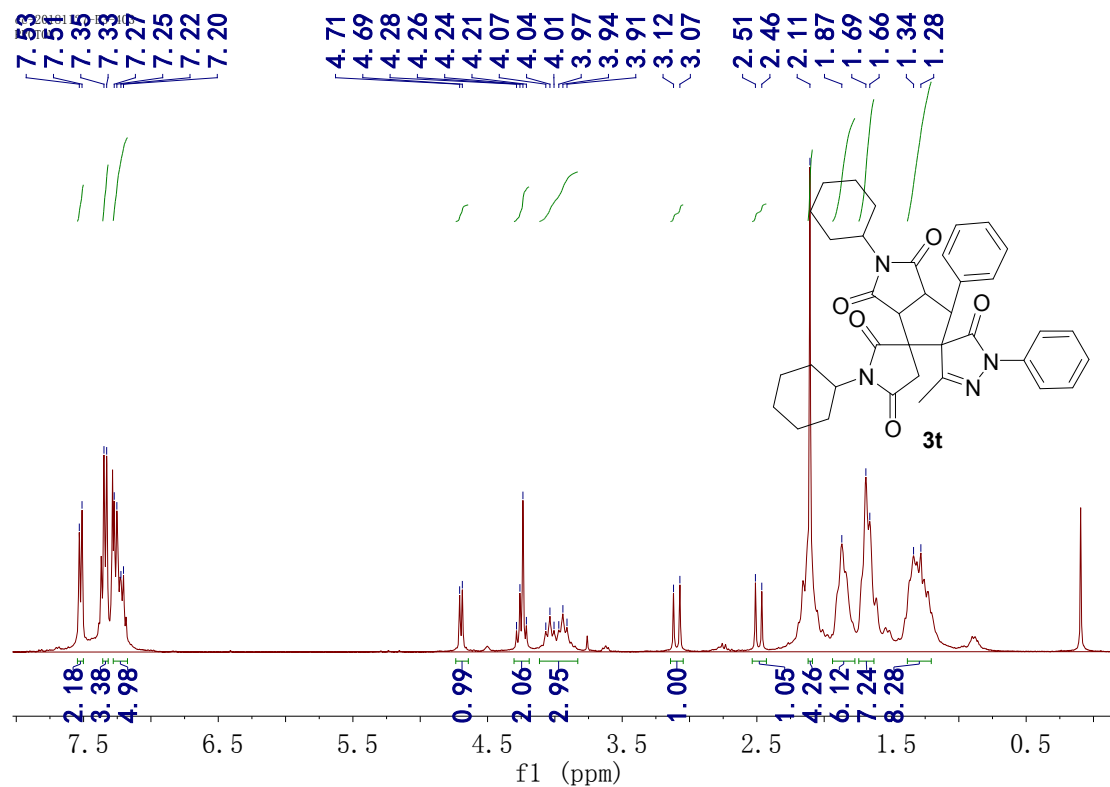


<sup>1</sup>H and <sup>13</sup>C NMR of 3s

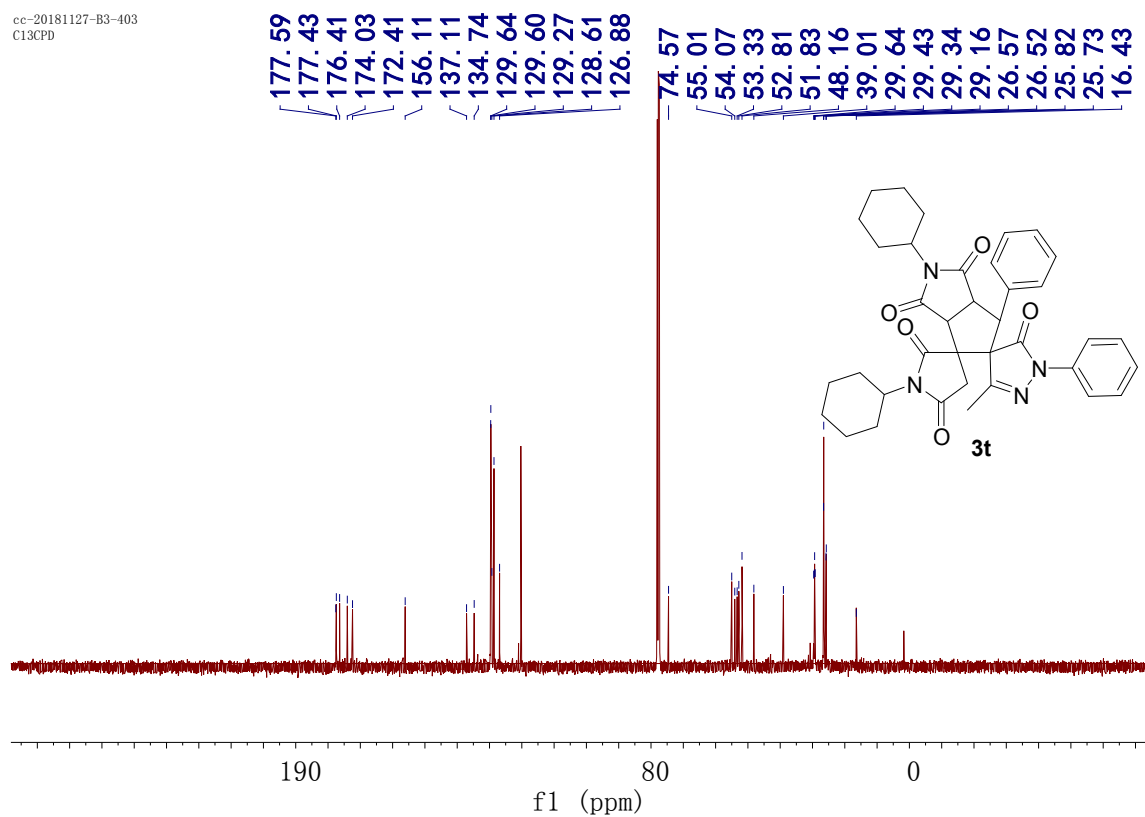




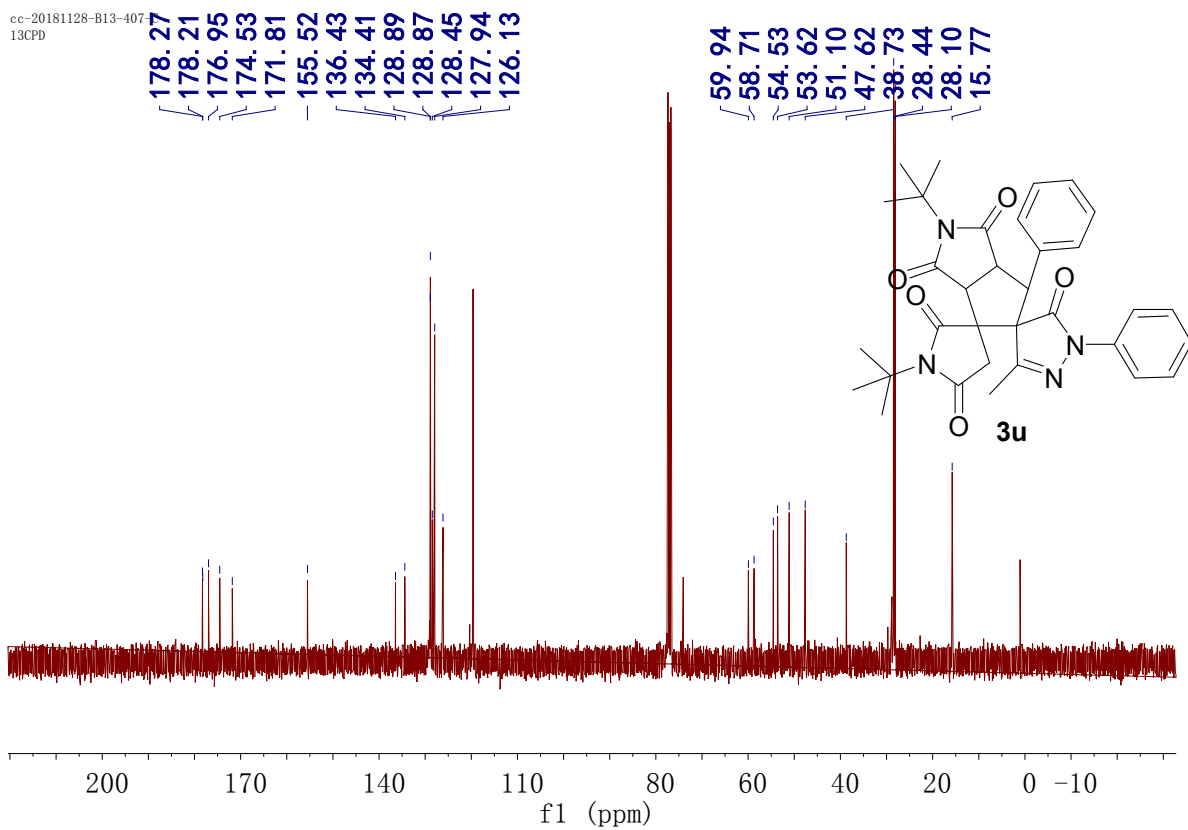
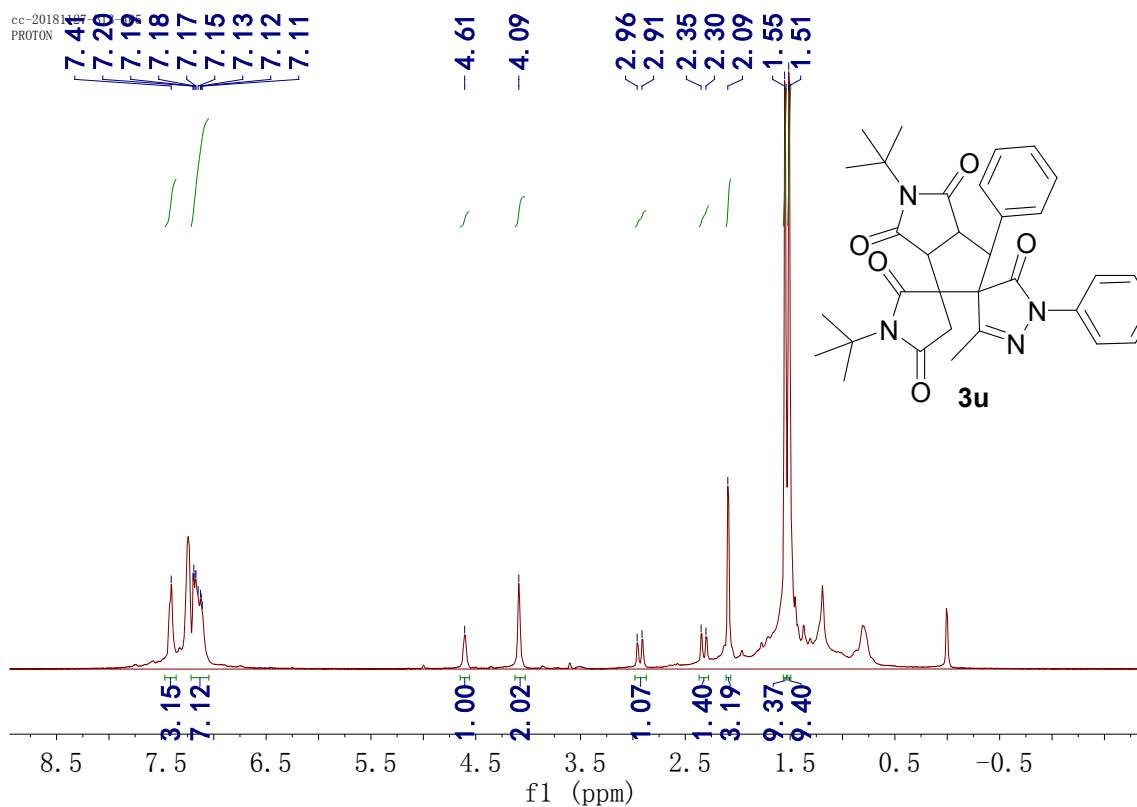
$^1\text{H}$  and  $^{13}\text{C}$  NMR of **3t**



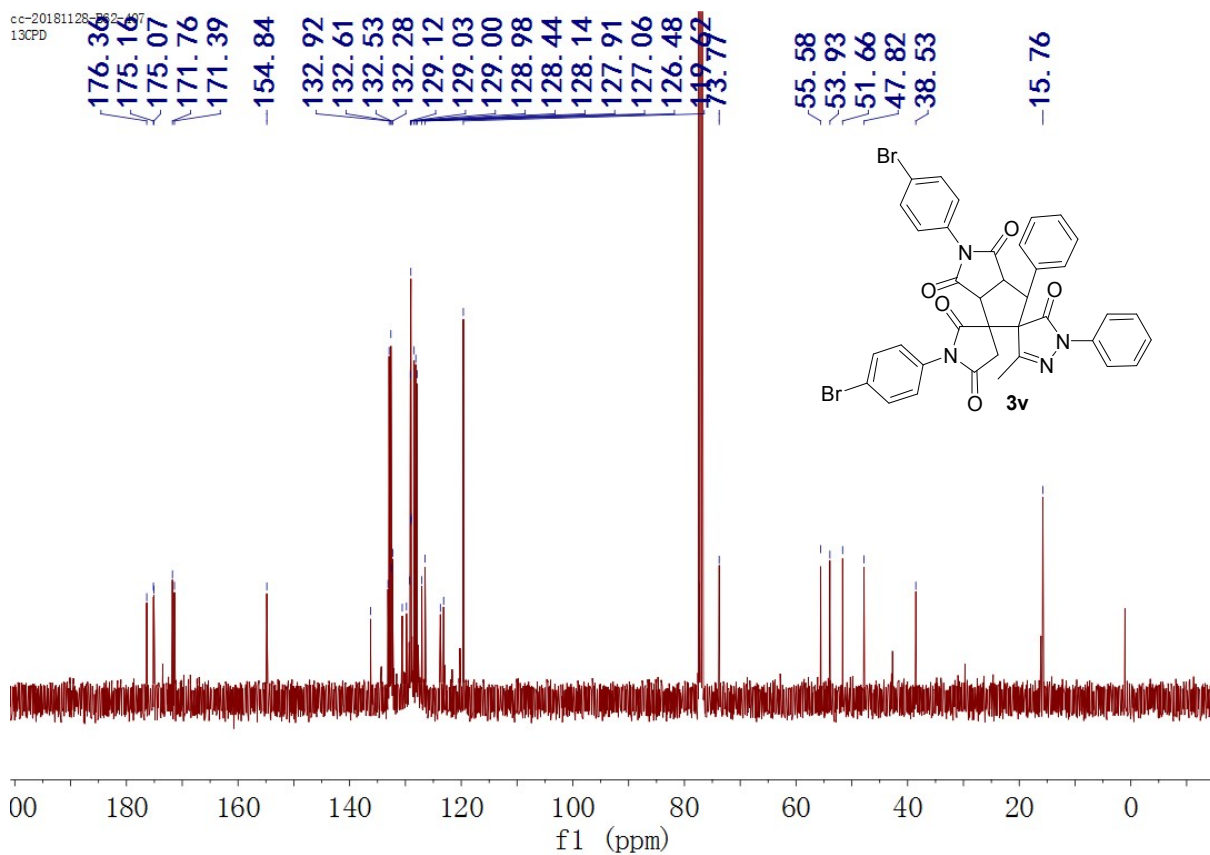
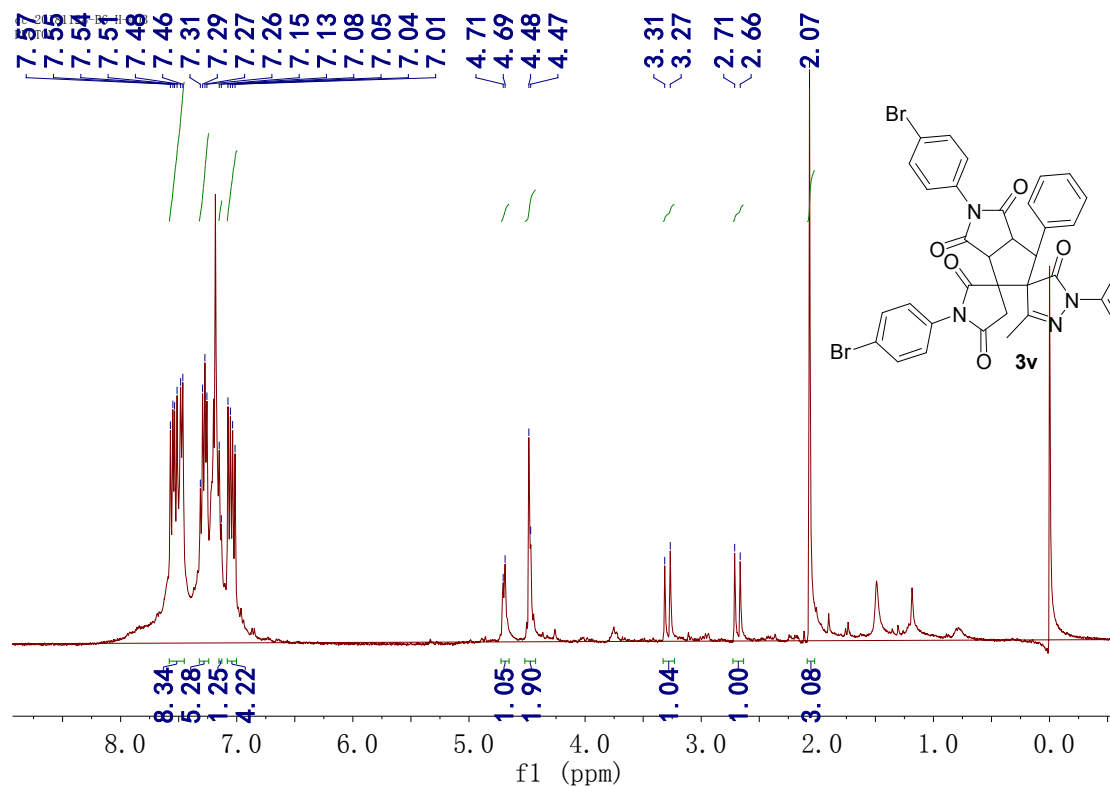
cc-20181127-B3-403  
C13CPD



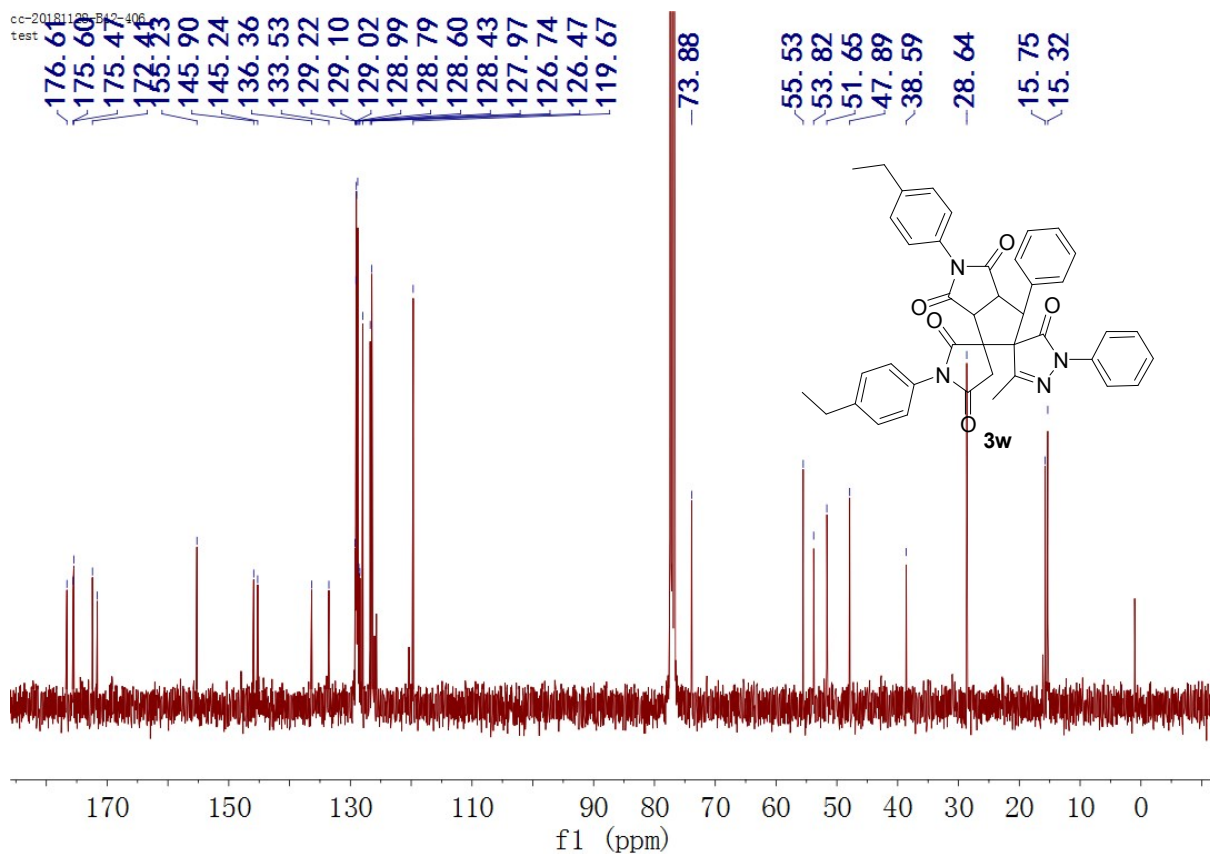
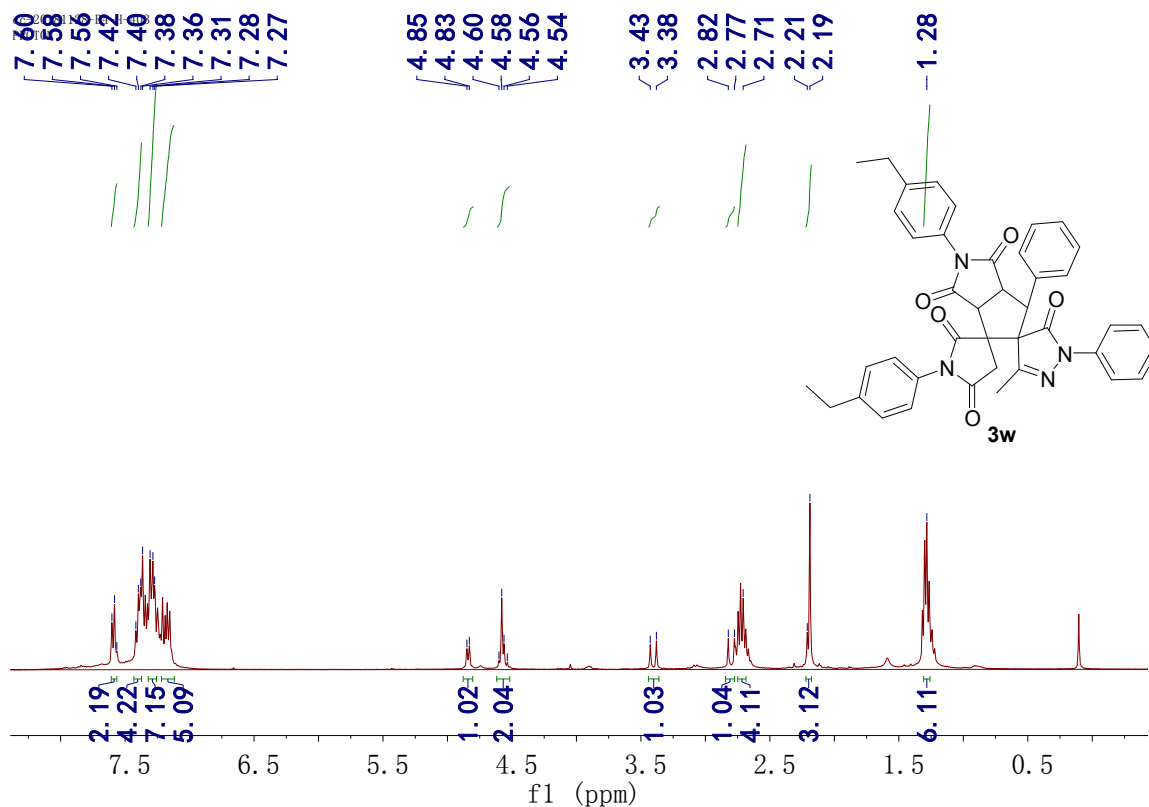
# $^1\text{H}$ and $^{13}\text{C}$ NMR of **3u**



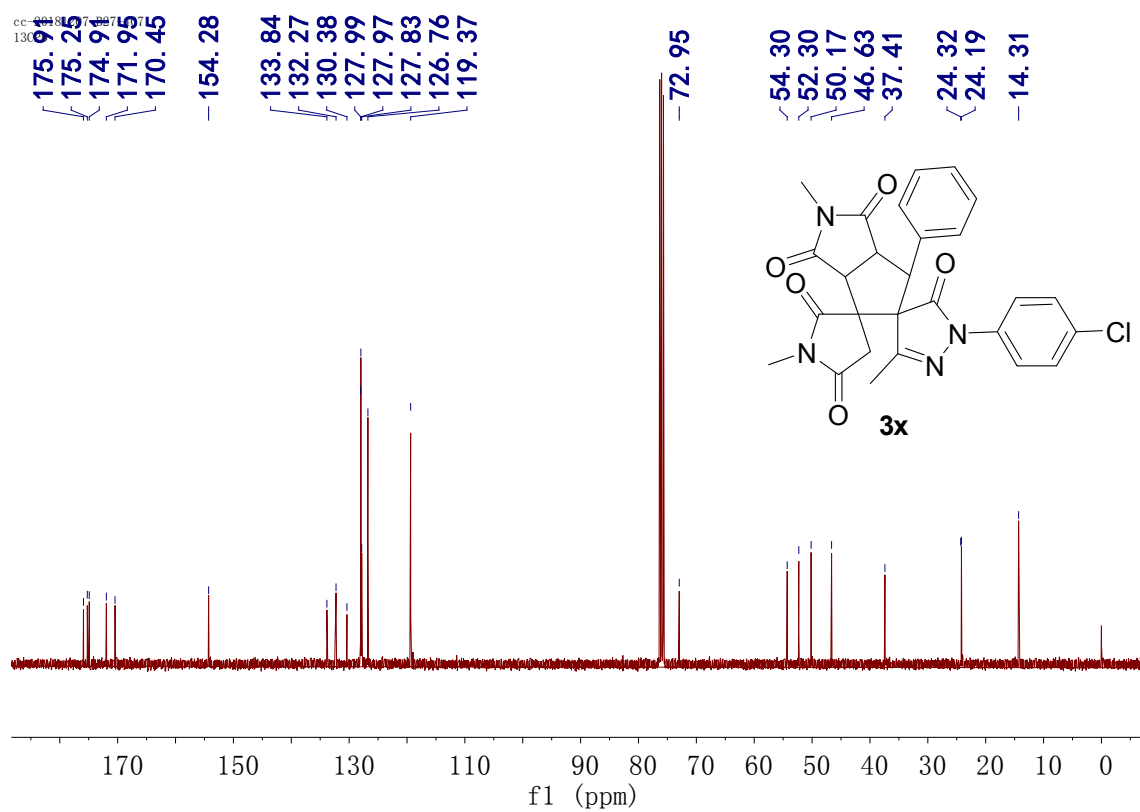
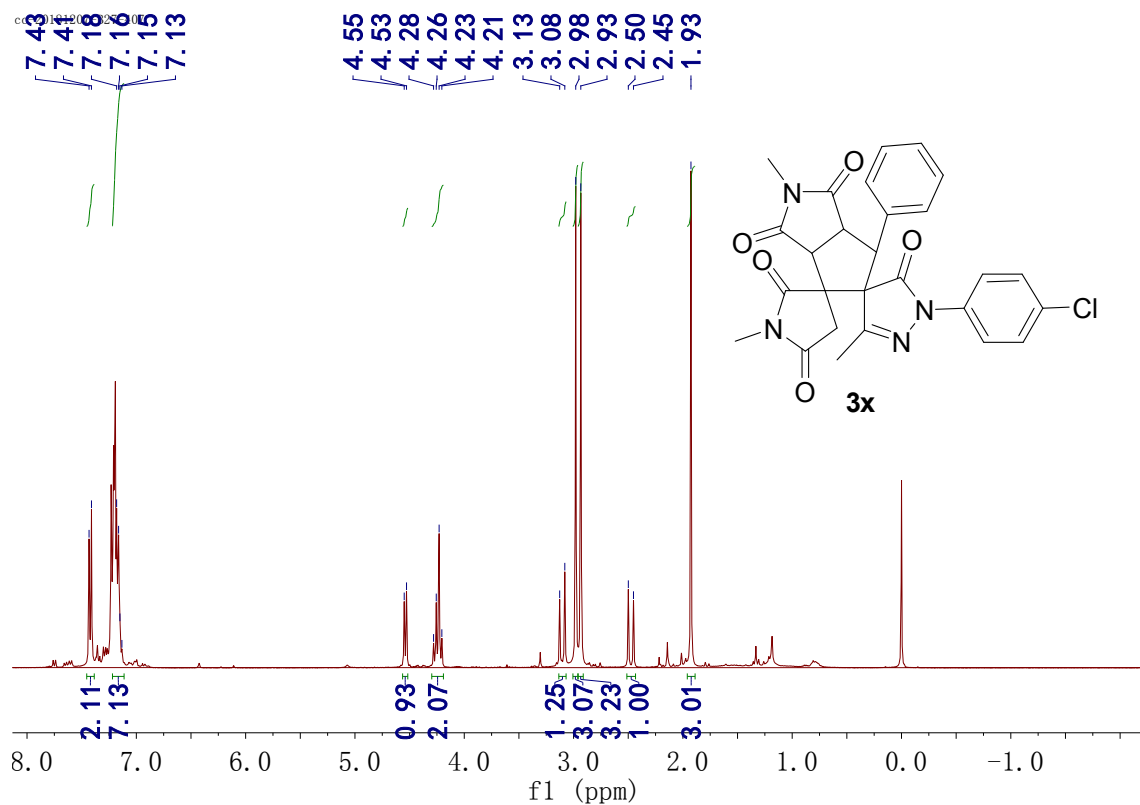
$^1\text{H}$  and  $^{13}\text{C}$  NMR of **3v**



$^1\text{H}$  and  $^{13}\text{C}$  NMR of **3w**

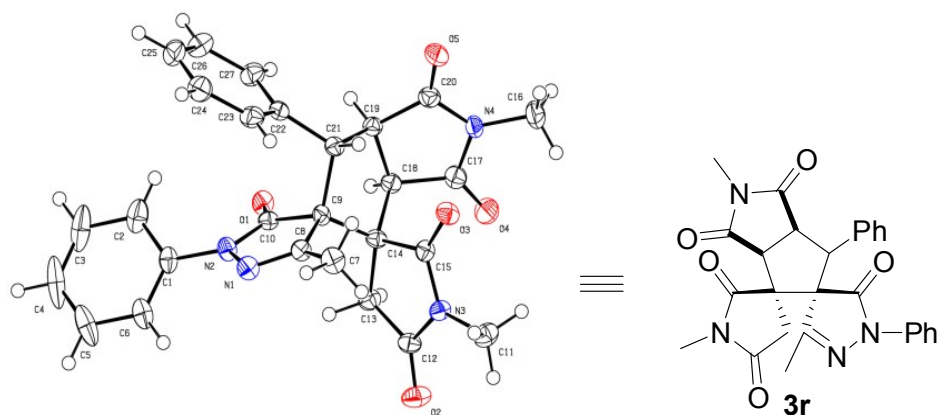


$^1\text{H}$  and  $^{13}\text{C}$  NMR of **3x**





## 5. X-ray crystallographic data of compound 3r



**Figure S1** X-ray crystal structure of **3r**

**Table S1** Crystal data and structure refinement for compound

|                             |  |
|-----------------------------|--|
| Name                        | Compound <b>3r</b>                                     |
| Empirical formula           | $C_{27}H_{24}N_4O_5$                                   |
| Formula weight              | 484.50   |
| Temperature                 | 113 (2)  |
| Crystal system, space group | triclinic  |
| Space group                 | P1   |
| Unit cell dimensions        | a = 8.0020(16) Å<br>b = 12.123(2) Å<br>c = 12.728(3) Å |
| $\alpha/^\circ$             | 75.11  |
| $\beta/^\circ$              | 76.29  |
| $\gamma/^\circ$             | 77.95  |

|   |   |
|---|---|
| Volume/Å <sup>3</sup>                       | 1144.8(5)   |
| Z   | 2   |
| ρ <sub>calc</sub> /cm <sup>3</sup>          | 1.406   |
| μ/mm <sup>1</sup>                           | 0.099   |
| F(000)                                      | 508   |
| Crystal size/mm <sup>3</sup>                | 0.20 × 0.18 × 0.12  |
| Radiation                                   | CuKα (λ = 1.54184)  |
| 2θ range for data collection/°              | 1.688 to 27.916   |
| Index ranges                                | -10 ≤ h ≤ 10, -14 ≤ k ≤ 15, -16 ≤ l ≤ 16                      |
| Reflections collected                       | 14006   |
| Independent reflections                     | 5442 [R <sub>int</sub> = 0.0462, R <sub>sigma</sub> = 0.0087] |
| Data/restraints/parameters                  | 5442/0/326  |
| Goodness-of-fit on F <sup>2</sup>           | 1.013   |
| Final R indexes [I ≥ 2σ (I)]                | R <sub>1</sub> = 0.0524, wR <sub>2</sub> = 0.1247             |
| Final R indexes [all data]                  | R <sub>1</sub> = 0.0849, wR <sub>2</sub> = 0.1699             |
| Largest diff. peak/hole / e Å <sup>-3</sup> | 0.353/-0.313  |