

Supporting Information for  
**A Biobased Low Dielectric Resin Derived from Vanillin  
and Guaiacol**

Linxuan Fang,<sup>a</sup> Yangqing Tao,<sup>a</sup> Junfeng Zhou,<sup>a</sup> Caiyun Wang,<sup>a</sup> Menglu Dai,<sup>a</sup> Jing Sun,<sup>a, b</sup> \* and Qiang Fang<sup>a</sup> \*

<sup>a</sup>Key Laboratory of Synthetic and Self-Assembly Chemistry for Organic Functional Molecules, Center for Excellence in Molecular Synthesis, Shanghai Institute of Organic Chemistry, University of Chinese Academy of Sciences, Chinese Academy of Sciences, 345 Lingling Road, Shanghai 200032, P. R. China.

<sup>b</sup>CAS Key Laboratory of Energy Regulation Materials Shanghai Institute of Organic Chemistry, 345 Lingling Road, Shanghai 200032, P. R. China.

CORRESPONDING AUTHOR FOOTNOTE

Corresponding Author:

\*To whom correspondence should be addressed. Tel & Fax: +86 21 5492 5337.

\*E-mail: qiangfang@sioc.ac.cn

\*E-mail: sunjing@sioc.ac.cn

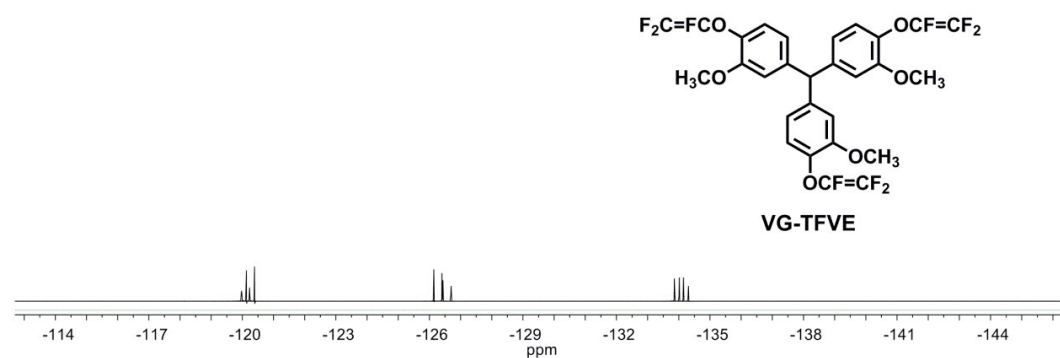
**This supplemental document contains 2 Figures and over 2 pages.**

## Contents:

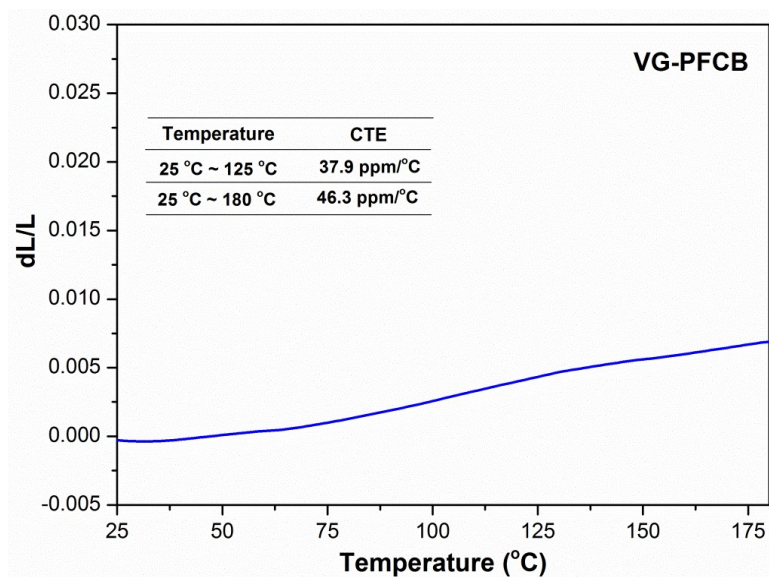
- Characterizations

**Fig. S1.**  $^{19}\text{F}$  NMR spectrum of **VG-PFCB** (376 MHz,  $\text{CDCl}_3$ ).

**Fig. S2.** CTE curve of **VG-PFCB** with a heating rate of  $5\text{ }^\circ\text{C min}^{-1}$ .



**Fig. S1.**  $^{19}\text{F}$  NMR spectrum of **VG-PFCB** (376 MHz,  $\text{CDCl}_3$ ).



**Fig. S2.** CTE curve of **VG-PFCB** with a heating rate of  $5\text{ }^\circ\text{C min}^{-1}$ .