

## Supplementary information

### Anchoring CuS nanoparticles on accordion-like $\text{Ti}_3\text{C}_2$ as high electrocatalytic activity counter electrodes for QDSSCs

Zizun Tian,<sup>[a]</sup> Zhonglu Qi,<sup>[a]</sup> Yuhao Yang,<sup>[a]</sup> Hailong Yan,<sup>[a]</sup> Qianqiao Chen\*<sup>[a]</sup> and Qin Zhong<sup>[a]</sup>

<sup>a</sup>School of Chemical Engineering, Nanjing University of Science and Technology Nanjing 210094, China

\*Corresponding author

E-mail address: [cqq@njust.edu.cn](mailto:cqq@njust.edu.cn)

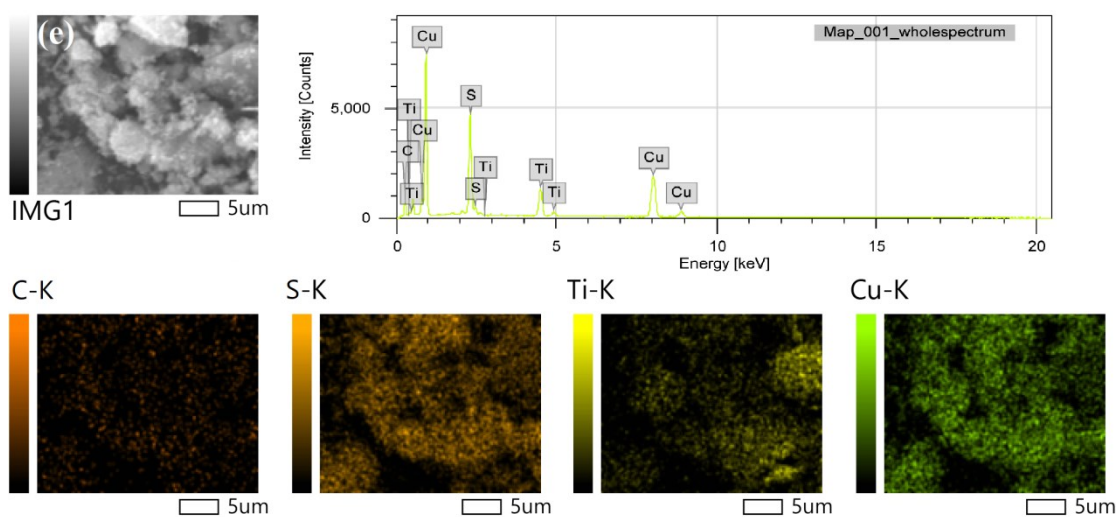
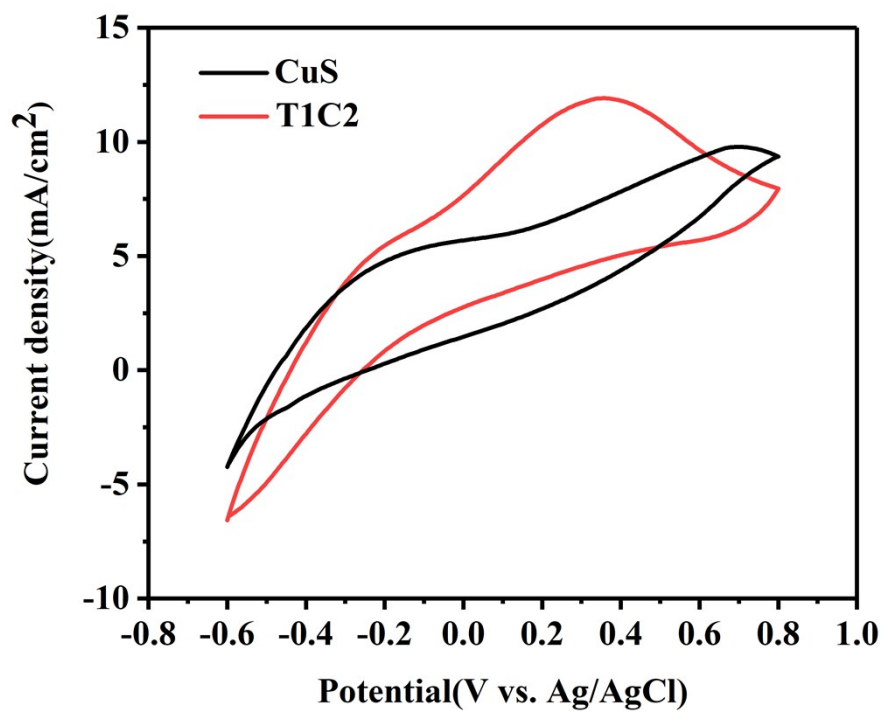


Fig. S1 EDX elemental mapping images of C, S, Ti and Cu



**Fig. S2.** CV plots of CuS and T1C2 in polysulfide electrolyte at a scan rate of  $10 \text{ mV s}^{-1}$