

Electronic Supplementary Information (ESI)

Controllable synthesis of hierarchical Au/PdAg heterostructures consisting of nanosheets on nanorods with plasmon-enhanced electrocatalytic properties

Zhiqiang Ge,[‡] Cheng Wang[‡] and Limin Qi^{*}

Beijing National Laboratory for Molecular Sciences (BNLMS), College of Chemistry, Peking University, Beijing 100871, China. E-mail: liminqi@pku.edu.cn

Contents

Figure S1. Length and width distribution diagram of GNRs.....	2
Figure S2. TEM and HRTEM images of Au/Pd NRNBs.....	2
Figure S3. TEM and HRTEM images of Au/PdAg NRNDs.....	2
Figure S4. Length and width distribution diagram of Au/PdAg NRNSs.....	3
Figure S5. TEM and HRTEM images of Au/PdAg NRNSs.....	3
Figure S6. TEM images of Au/PdAg nanostructures with different CTAB concentrations.....	4
Figure S7. TEM images of Au/PdAg nanostructures with different DTAB concentrations.....	4

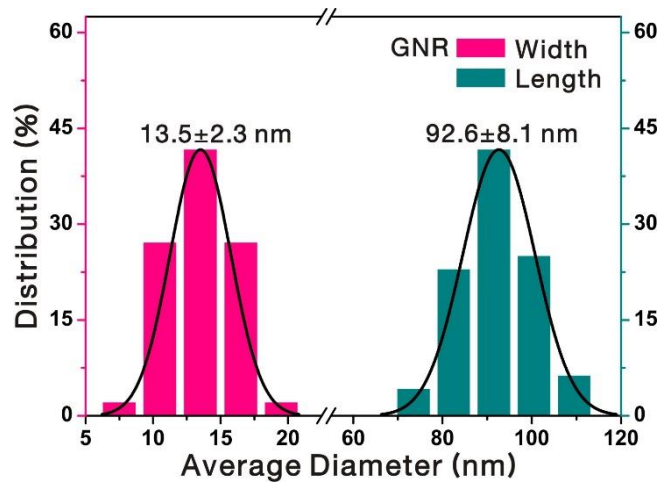


Fig. S1 Length and width distribution diagram of GNRs.

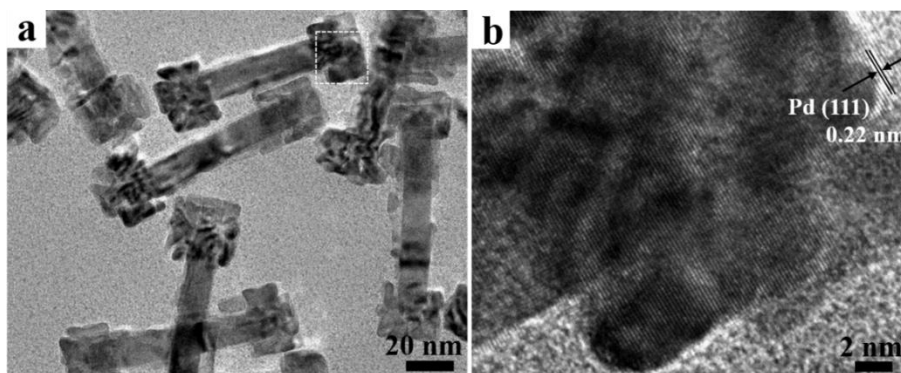


Fig. S2 TEM (a) and HRTEM (b) images of Au/Pd NRNBs. The HRTEM image in panel b corresponds to the framed area in panel a.

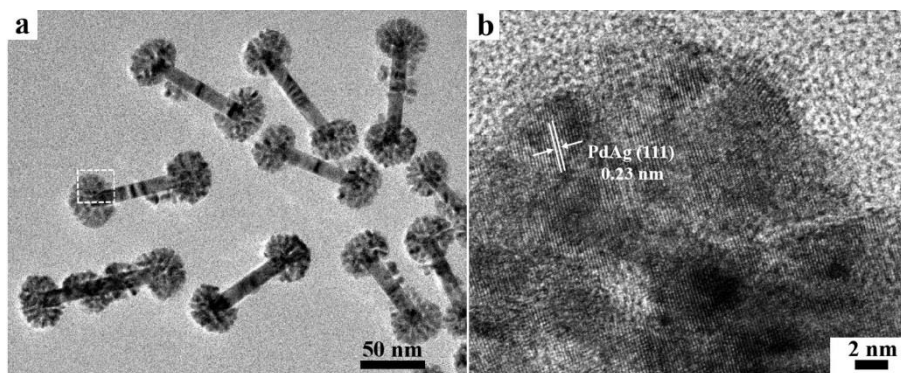


Fig. S3 TEM (a) and HRTEM (b) images of Au/PdAg NRNDs. The HRTEM image in panel b corresponds to the framed area in panel a.

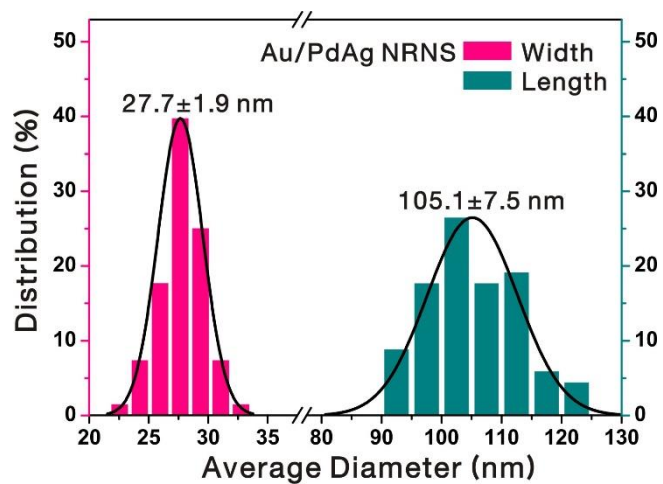


Fig. S4 Length and width distribution diagram of Au/PdAg NRNSs.

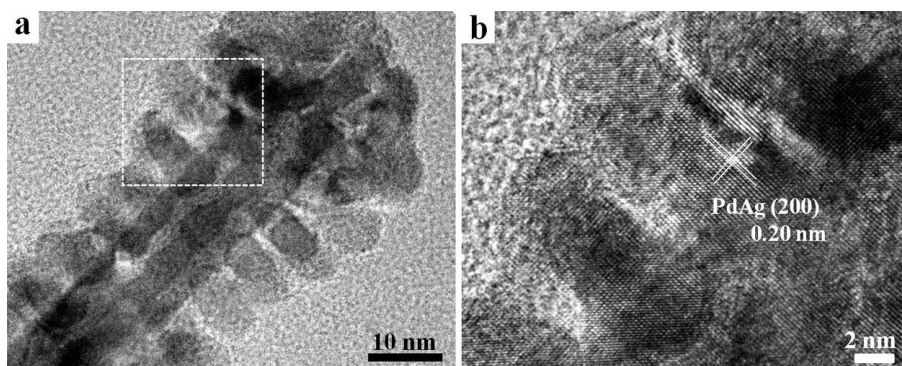


Fig. S5 TEM (a) and HRTEM (b) images of Au/PdAg NRNSs. The HRTEM image in panel b corresponds to the framed area in panel a.

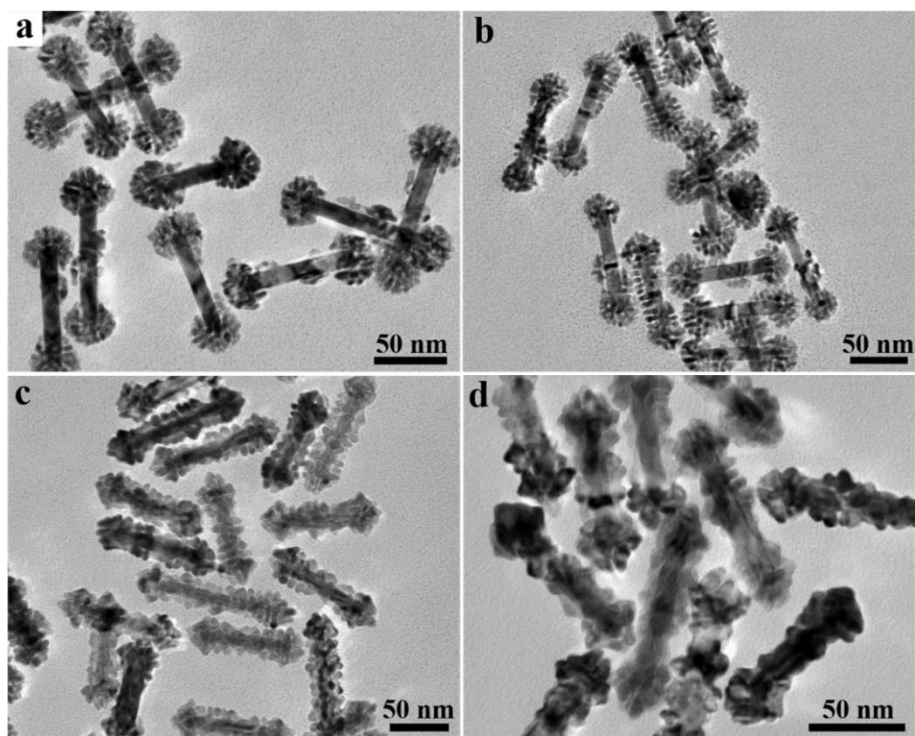


Fig. S6 TEM images of Au/PdAg hybrid nanostructures obtained in the mixed DTAB/CTAB system with different CTAB concentrations: (a) 0.12 mM; (b) 0.17 mM; (c) 5.0 mM; (d) 10 mM. The DTAB concentration was kept 3 mM.

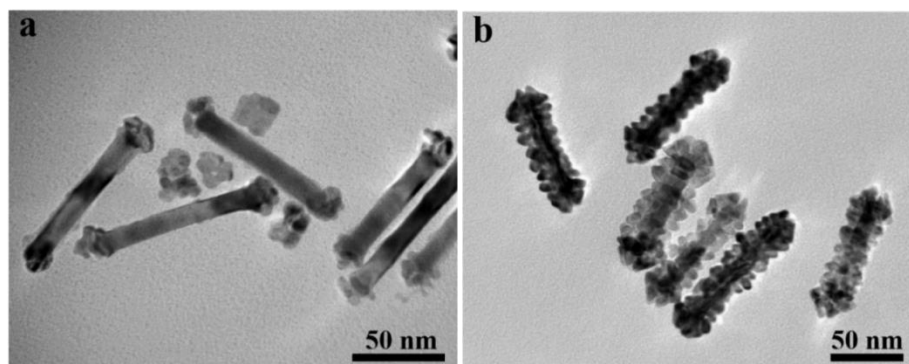


Fig. S7 TEM images of Au/PdAg hybrid nanostructures obtained in the mixed DTAB/CTAB system with different DTAB concentrations: (a) 0 mM; (b) 10 mM. The CTAB concentration was kept 1 mM.