

Dual-Color Emitting Mn²⁺ ions Doped (PEA)₂PbBr₄ Perovskite Towards White Light-Emitting Diodes

Xupeng Gao,^a Xinyu Shen,^a Dingke Xue,^a Xin Li,^a Po Lu,^a Min Lu,^a Chunyan Li,^{*,b} William W. Yu,^{*,c} and Xue Bai^{*,a}

^a State Key Laboratory of Integrated Optoelectronics and College of Electronic Science and Engineering, Jilin University, Changchun 130012, China

^b Department of Prothodontics, School and Hospital of Stomatology, Jilin University, Changchun, 130021, China

^c Department of Chemistry and Physics, Louisiana State University, Shreveport, LA 71115, USA

* Corresponding author E-mail: cylu@jlu.edu.cn (C. Y. Li),
wyu6000@gmail.com (W. W. Yu),
baix@jlu.edu.cn (X. Bai)

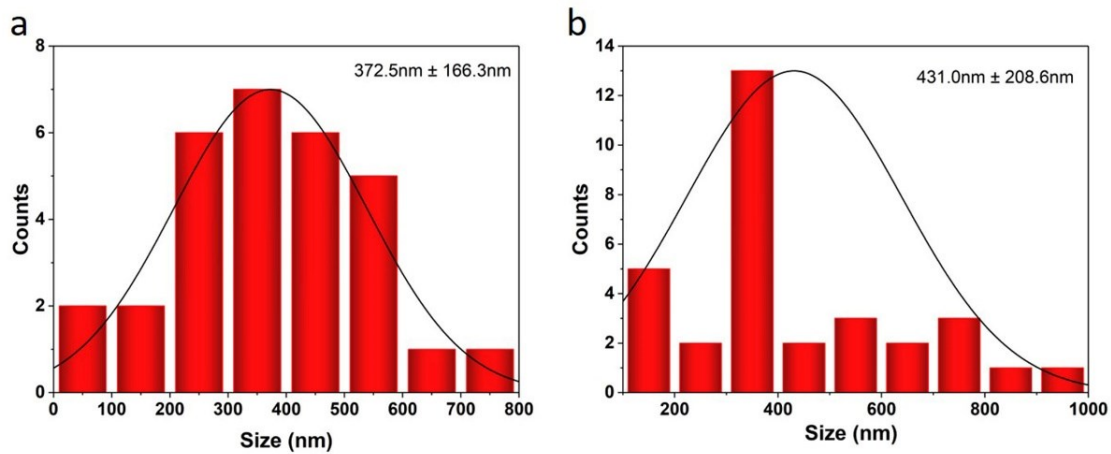


Fig. S1. Lateral (a) and vertical size (b) distributions of 2D (PEA)₂PbBr₄ NCs.

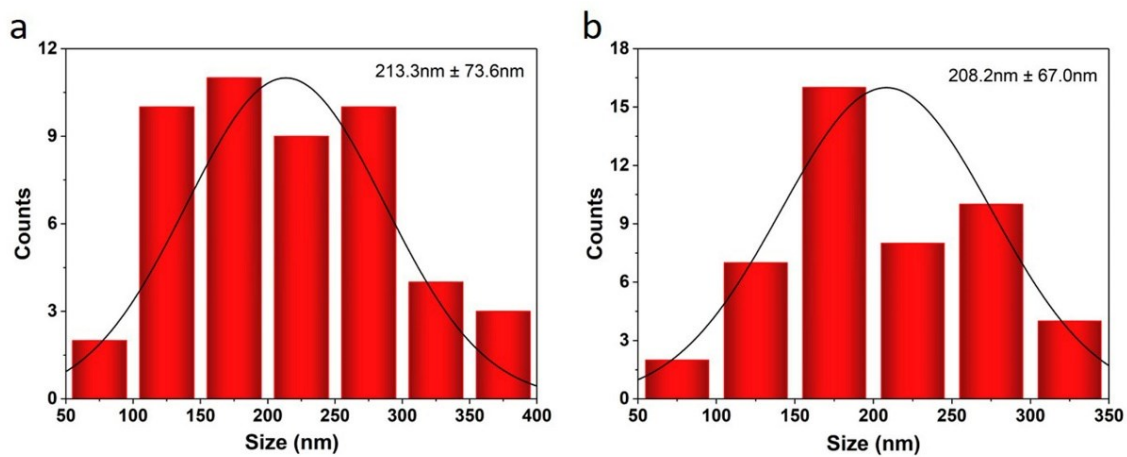


Fig. S2. Lateral (a) and vertical size (b) distribution of 60% Mn²⁺ ions doped (PEA)₂PbBr₄ NCs.

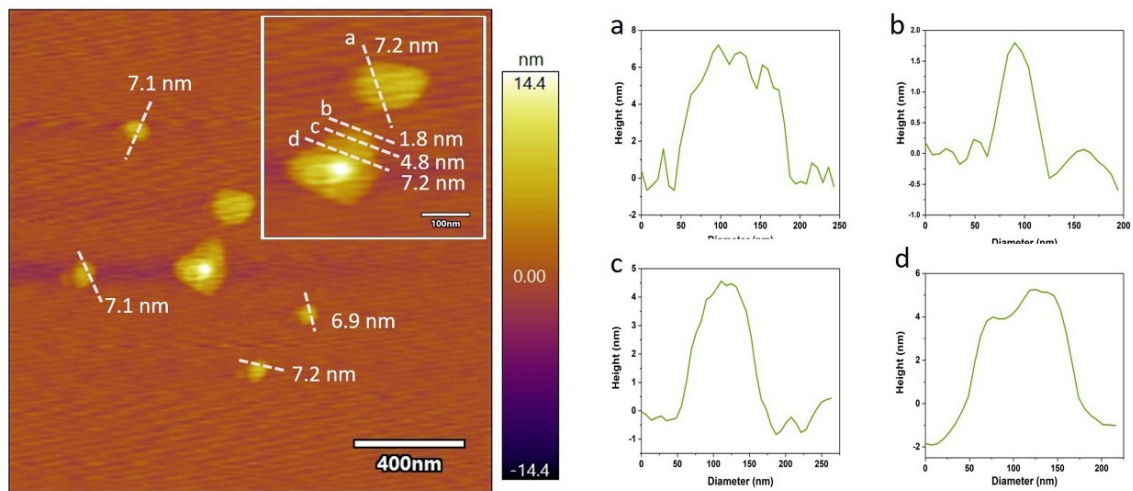


Fig. S3. AFM height image and height profile of 2D (PEA)₂PbBr₄ NCs.

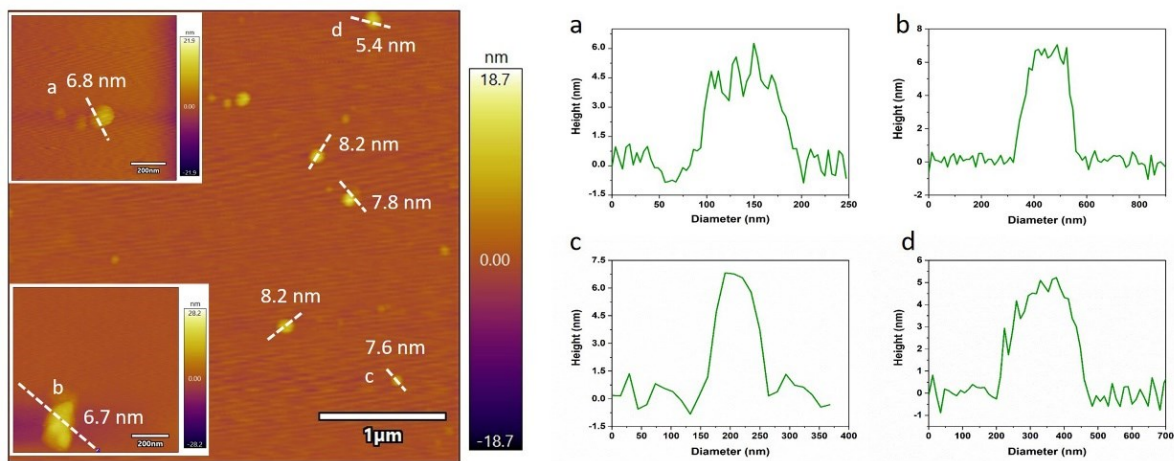


Fig. S4. AFM height image and height profile of 60% Mn²⁺ ions doped (PEA)₂PbBr₄ NCs.