

Electronic Supporting Information

Dual-Template Approach to Hierarchically Porous Polymer Membranes

Thomas Southern^a and Rachel C. Evans^{a}*

^a Department of Materials Science & Metallurgy, University of Cambridge, 27 Charles
Babbage Road, CB3 0FS, U.K.

* Corresponding Author: rce26@cam.ac.uk

TABLE OF CONTENTS

1	PORE SIZE DISTRIBUTION OF SAMPLE MEMBRANES	2
---	--	---

1 Pore size distribution of sample membranes

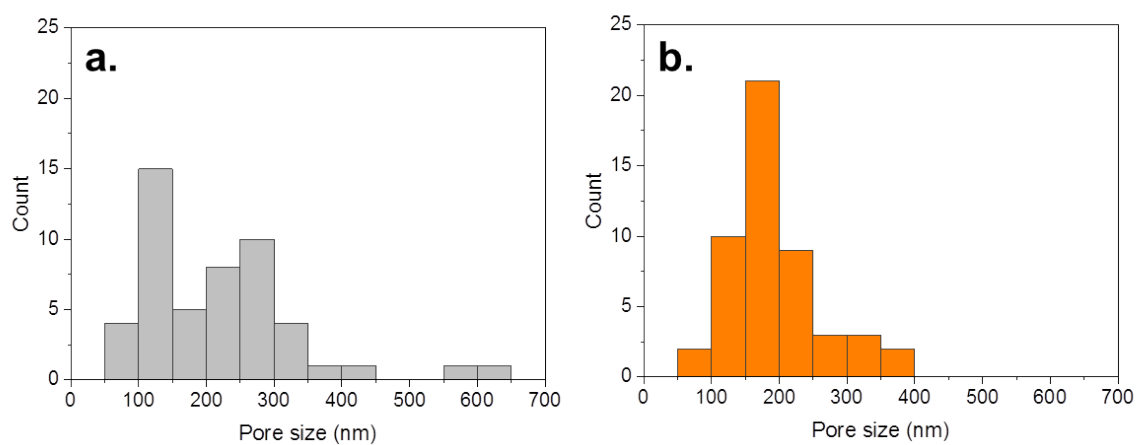


Figure S1 Histograms showing the pore size distribution in the skin layer of (a) the control membrane and (b) test membrane containing PABA as measured by scanning electron microscopy (SEM). The mean pore sizes are determined to be 220 ± 116 nm and 188 ± 71 nm, respectively.