

Supporting information

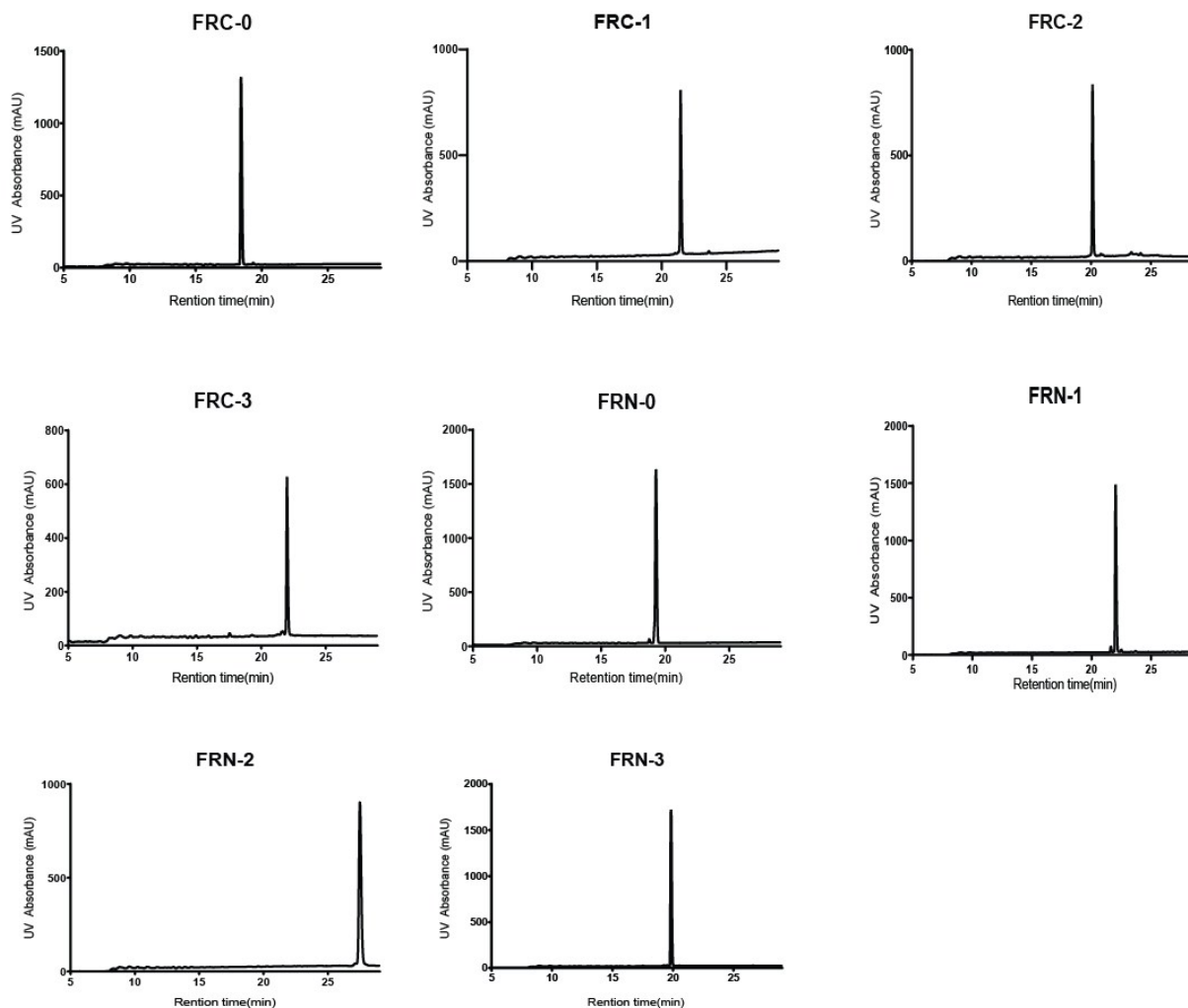
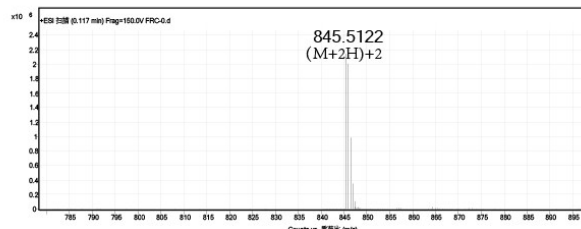
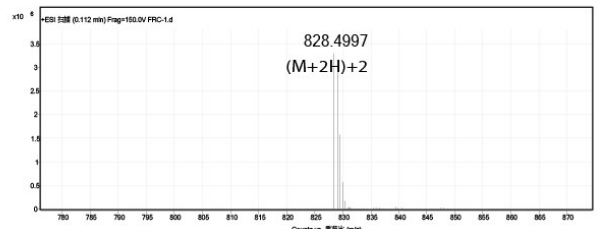


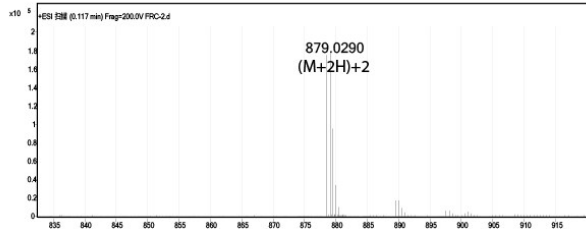
Figure S1 HPLC chromatograms spectra of linear and stapled peptides. All peptides was analyzed by HPLC at gradients, 5-65 % B over 25 min (A= water, B = acetonitrile).



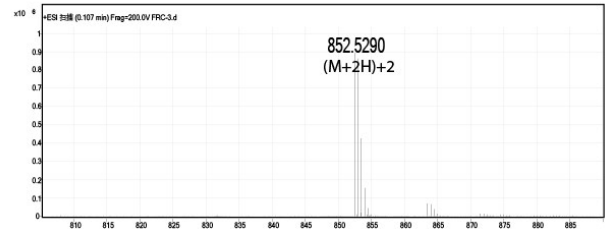
FRC-0



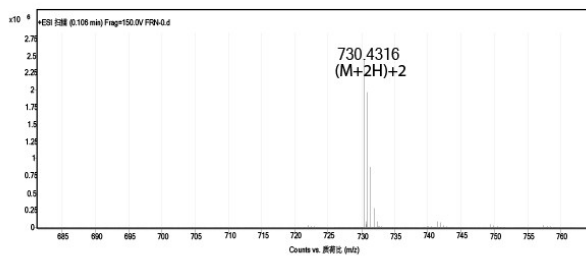
FRC-1



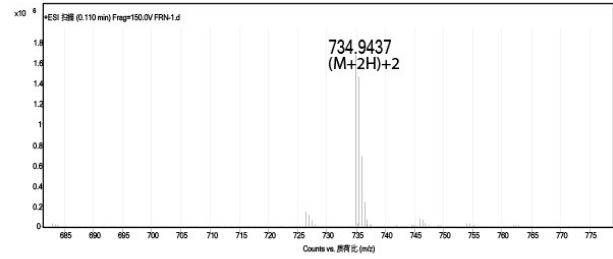
FRC-2



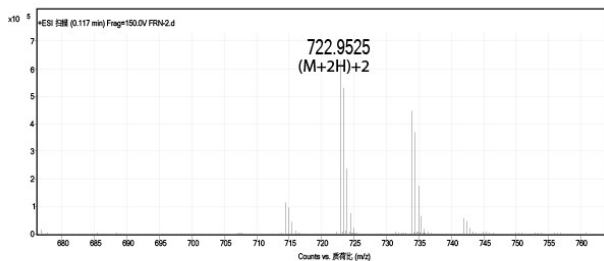
FRC-3



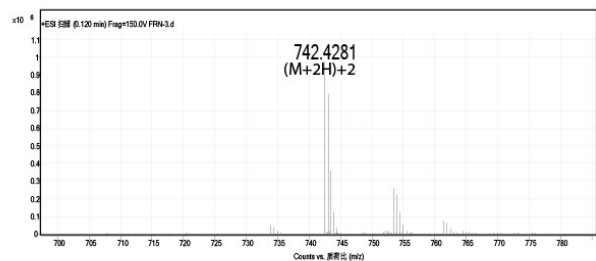
FRN-0



FRN-1



FRN-2



FRN-3

Figure S2 High resolution mass spectrometry of linear and stapled peptides

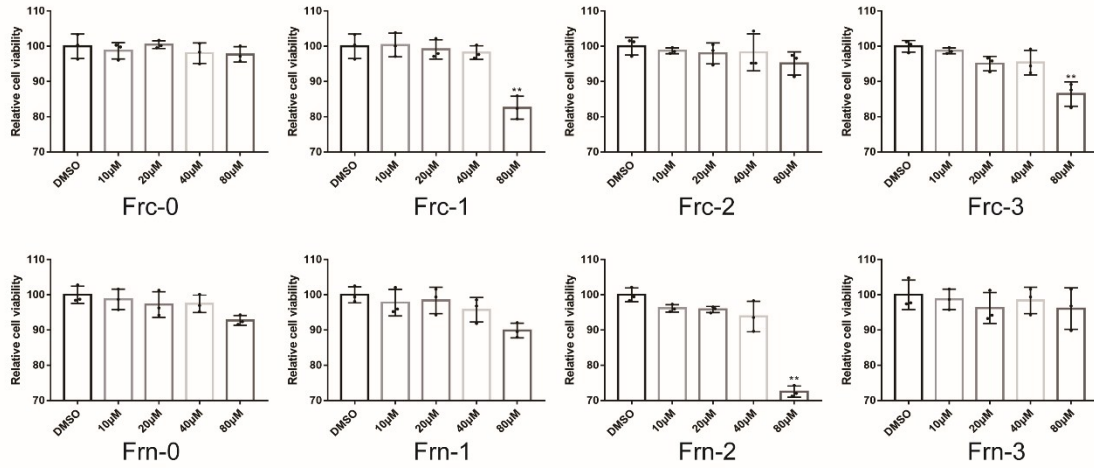


Figure S3 Cytoactive of peptides -treated BMMs tested by CCK-8 assays at 96 hours. (Bars represent the standard error of the mean)