

Supplemental information

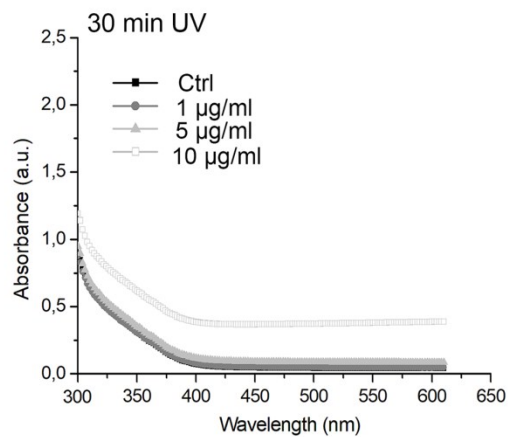
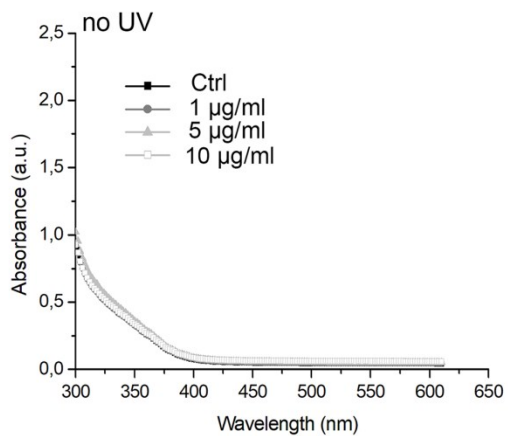


Fig. S1 FeMnO₃ powder after combustion

Table S1 Structural parameters for FeMnO₃ sintered sample obtained by Rietveld refinement of XRD pattern, *wR*=3.26%

FeMnO₃						
<i>Ia</i> $\bar{3}$, <i>a</i> = 9.4195(4) Å, Crystallite size: 93 nm, Microstrain: 1.4(4)·10 ³						
Atom	Site	<i>x</i>	<i>y</i>	<i>z</i>	<i>U</i> _{iso}	Occupancy
Fe1	8a	0.25	0.25	0.25	0.002(5)	0.5
Mn1	8a	0.25	0.25	0.25	0.002(5)	0.5
Fe2	24d	-0.0353(7)	0	0.25	0.016(3)	0.5
Mn2	24d	-0.0353(7)	0	0.25	0.016(3)	0.5
O	48e	0.1103(29)	0.1101(26)	0.3376(21)	0.0020(6)	1
O-Fe1 distance		2.04(3) Å				
O-Fe2 distance		1.907(23) Å; 2.061(17); 2.138(23)				

A



B

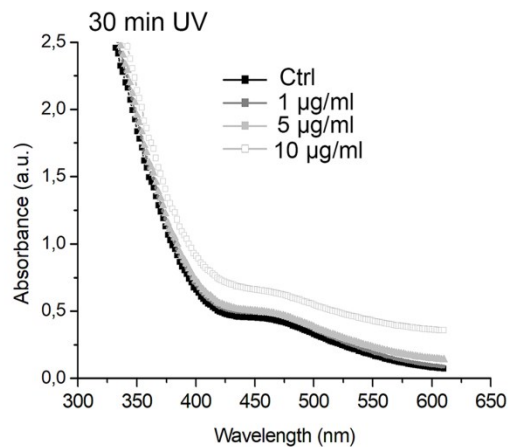
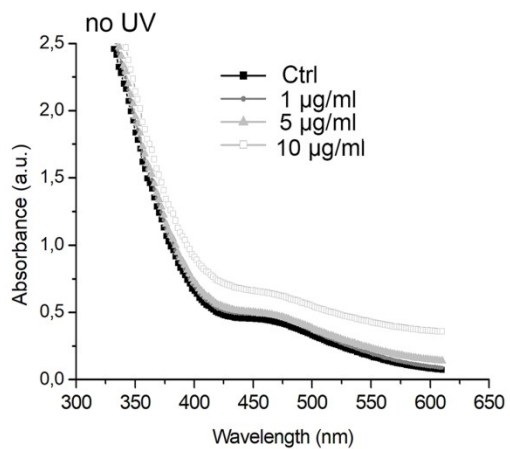


Fig. S2 XTT assay. FeMnO₃ at various concentrations was dissolved in water (A) or BHI medium (B). Solution was kept in dark (no UV) or exposed to UV irradiation upon 30 min. XTT test was performed then in order to verify for ROS formation.