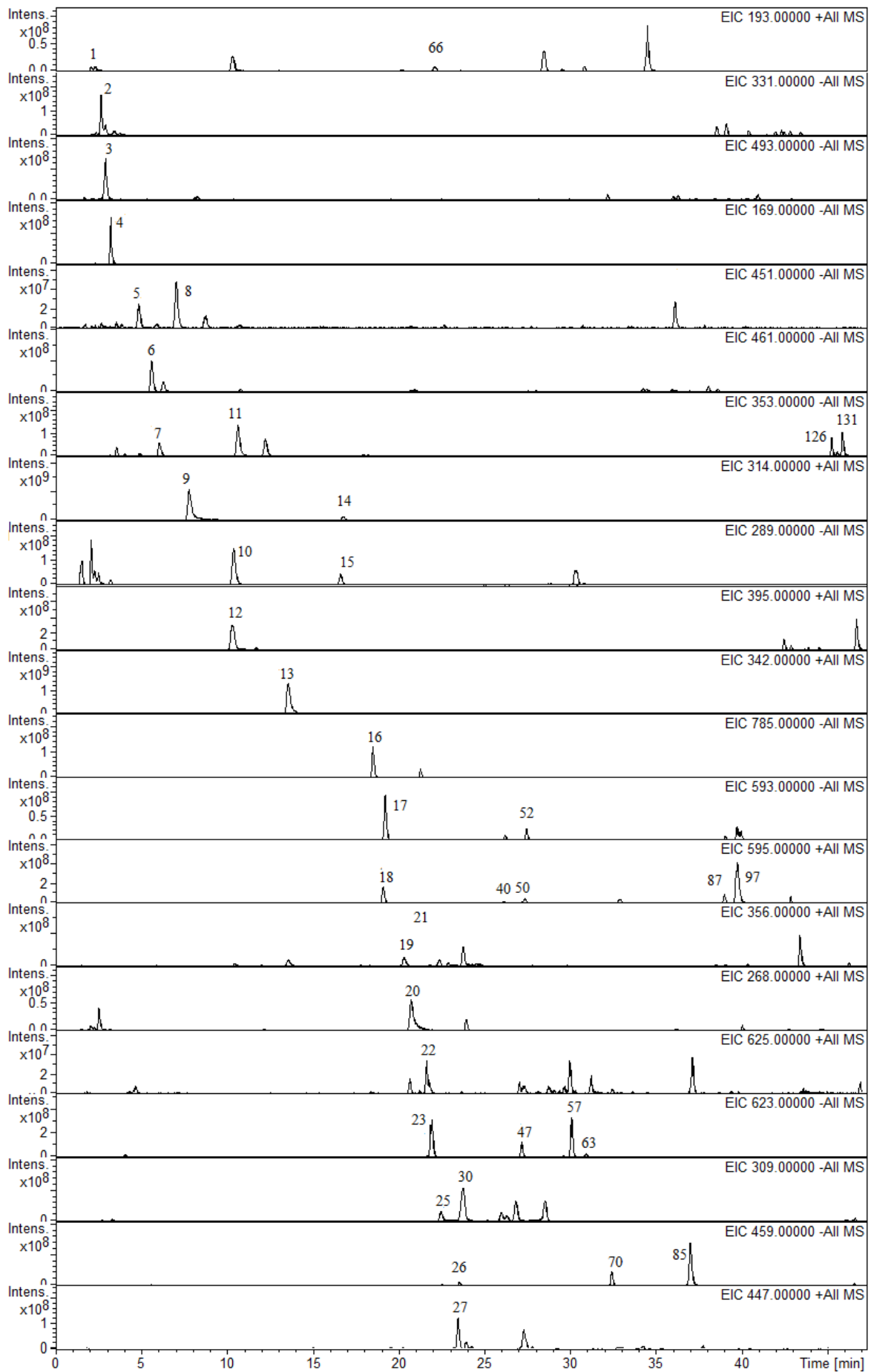
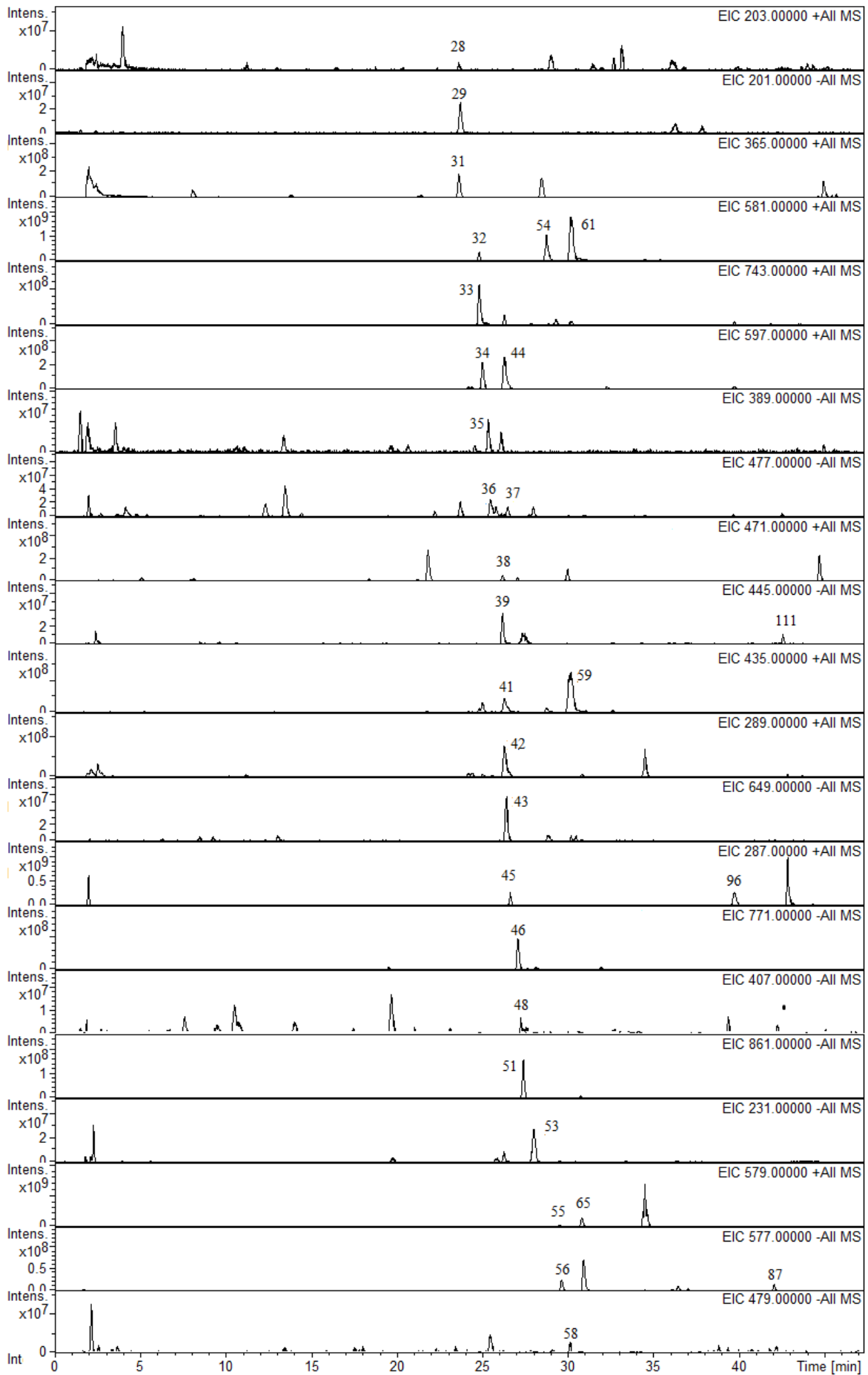


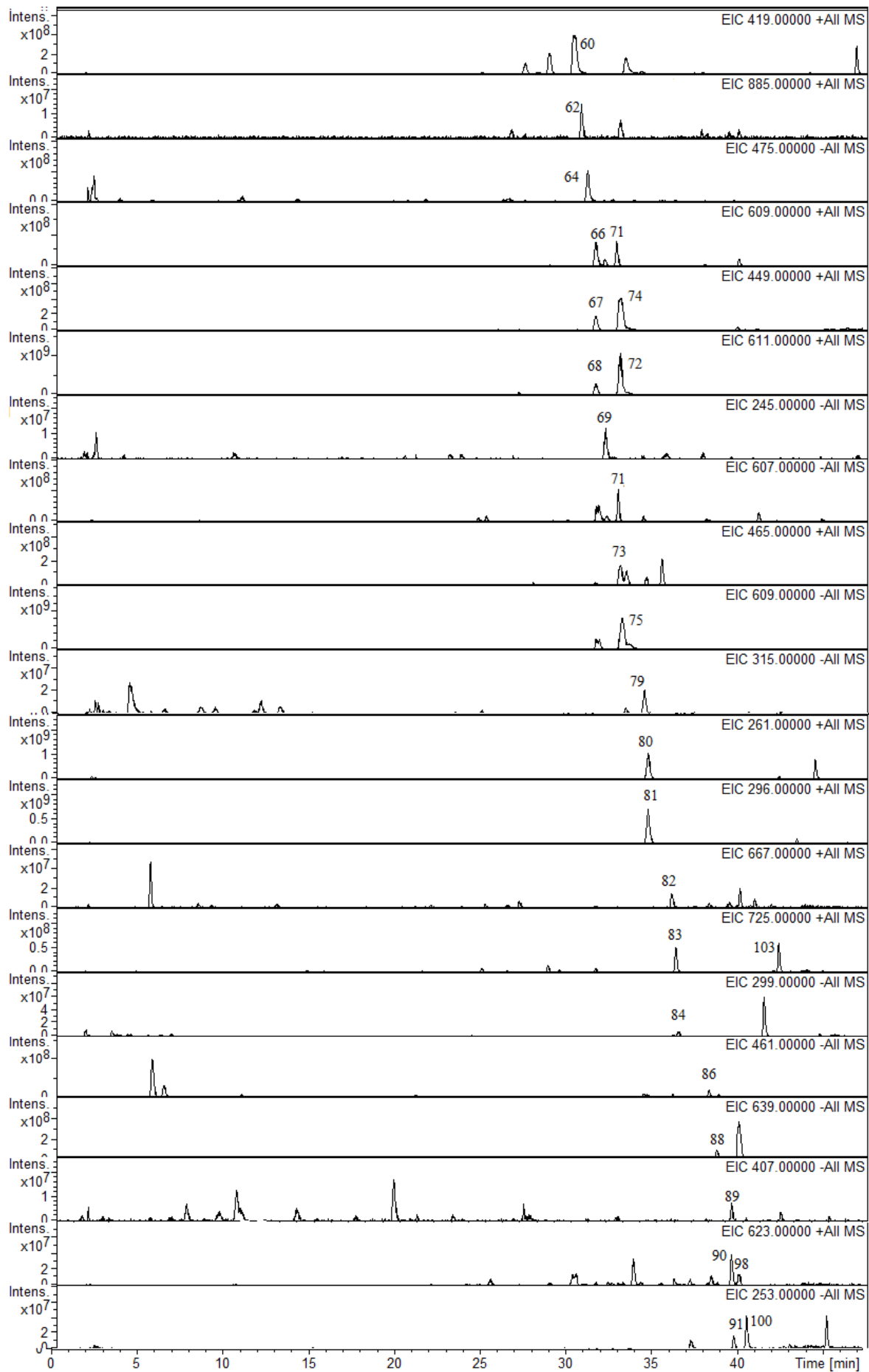
Supplementary data

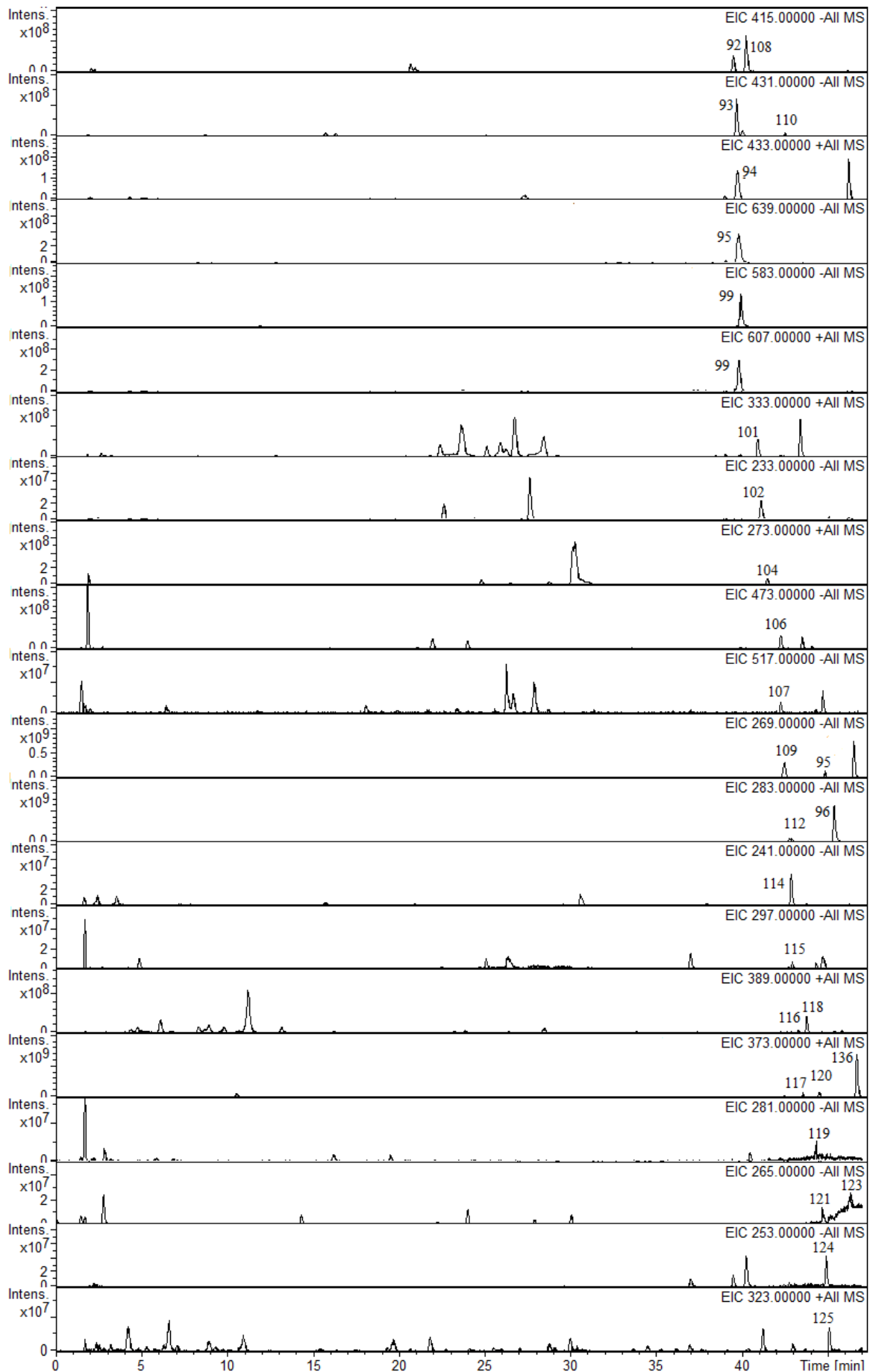
Fig.S1 Extracted ion chromatograms (EICs) for chemical compounds in SHD.

Fig.S2 The chemical structures of compounds in SHD









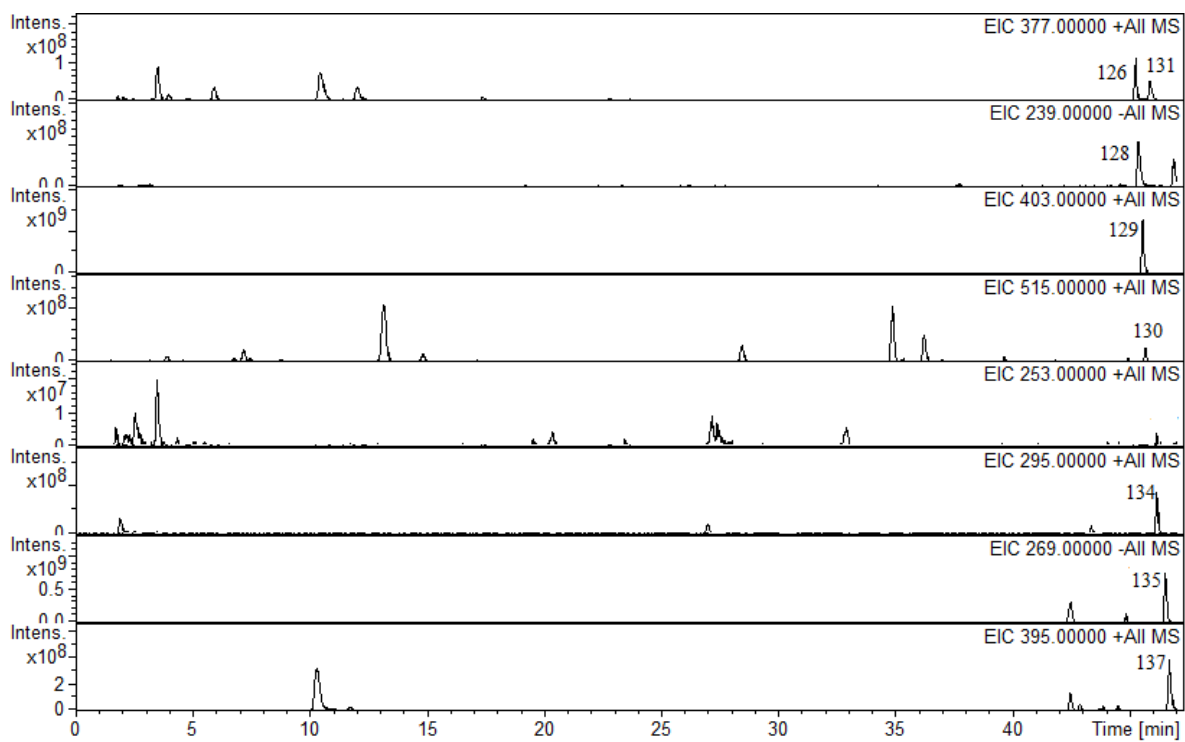
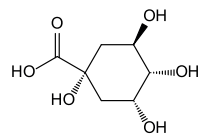
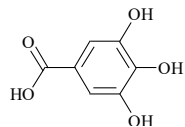


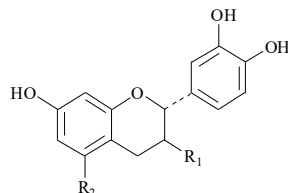
Fig.S1 Extracted ion chromatograms (EICs) for chemical compounds in SHD



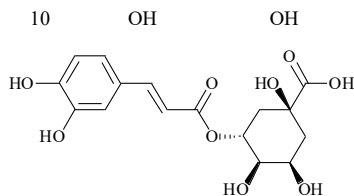
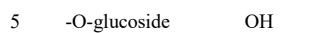
1



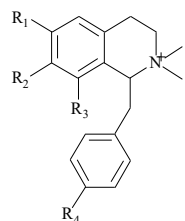
4



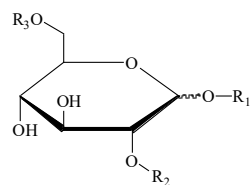
R₁ R₂



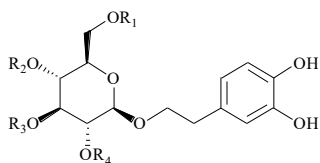
7



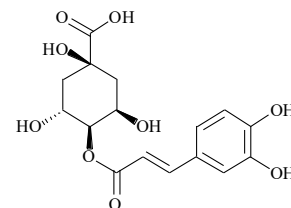
R₁ R₂ R₃ R₄



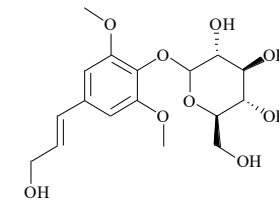
R₁ R₂ R₃



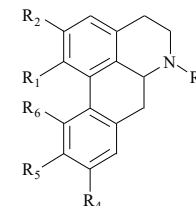
R₁ R₂ R₃ R₄



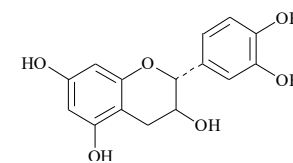
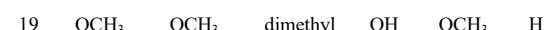
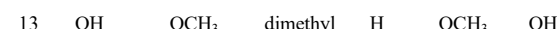
11



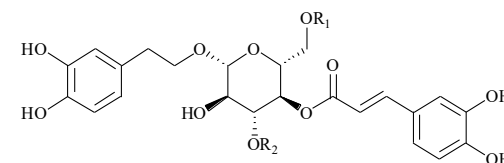
12



R₁ R₂ R₃ R₄ R₅ R₆

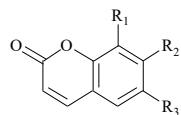


15



R₁ R₂

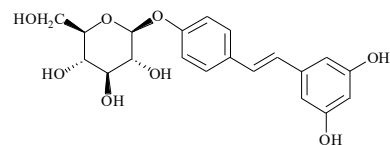




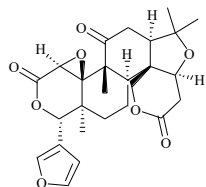
	R ₁	R ₂	R ₃
24	H	OH	OCH ₃

	R ₁	R ₂	R ₃
80		OCH ₃	H

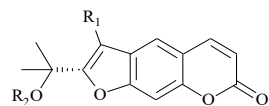
	R ₁	R ₂	R ₃
81		OCH ₃	H



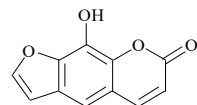
35



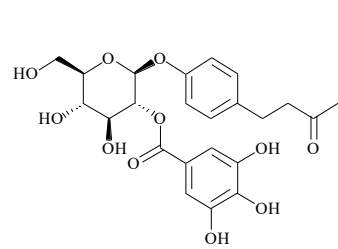
38



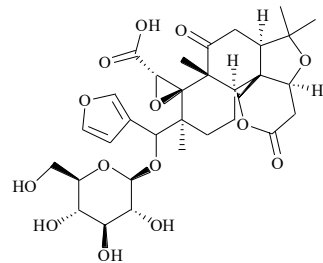
	R ₁	R ₂
27	OH	-O-glucoside
99	OH	-O-Glc ⁶ -ferlic acid



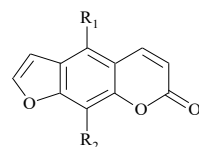
28



36



43



	R ₁	R ₂
29	OH	H

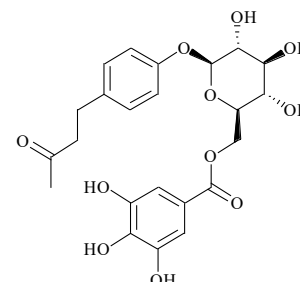
	R ₁	R ₂
31	-O-glucoside	H

	R ₁	R ₂
125	OCH ₃	

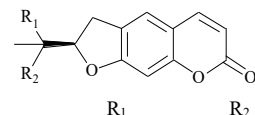
29

31

125

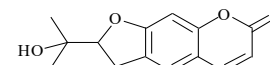


37



	R ₁	R ₂
48	-O-glucoside	H

	R ₁	R ₂
69	OH	H



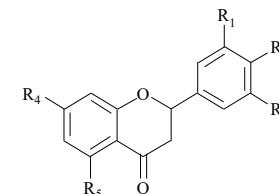
49

48

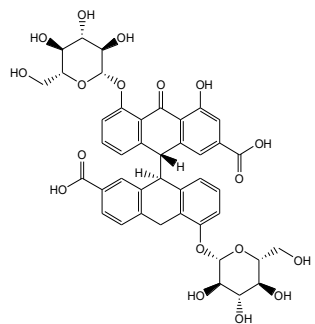
69

104

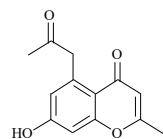
113



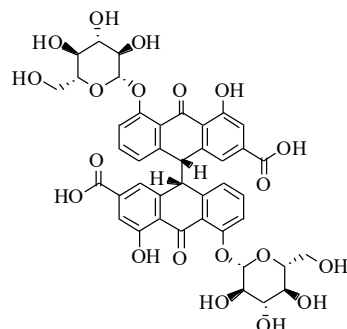
	R ₁	R ₂	R ₃	R ₄	R ₅
34	H	OH	OH	-O-rutinoside	OH
41	H	OH	OH	-O-glucoside	OH
42	H	OH	OH	OH	OH
44	H	OH	OH	-O-neohesperidoside	OH
45	H	OCH ₃	H	OH	OH
54	H	OH	OH	-O-rutinoside	OH
59	H	OH	H	-O-glucoside	OH
61	H	OH	H	-O-neohesperidoside	OH
67	H	OCH ₃	H	-O-glucoside	OH
68	H	OCH ₃	OH	-O-neohesperidoside	OH
72	H	OCH ₃	OH	-O-rutinoside	OH
73	OCH ₃	OH	H	-O-glucoside	OH
74	H	OH	H	OCH ₃	-O-glucoside
76	OCH ₃	OH	H	OH	OH
96	H	OCH ₃	H	-O-neohesperidoside	OH
97	H	OH	H	OCH ₃	OH
104	H	OH	H	OH	OH
113	H	OCH ₃	OH	OH	OH



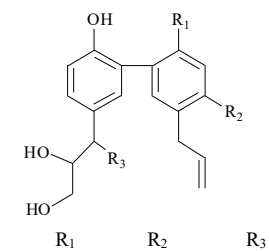
51



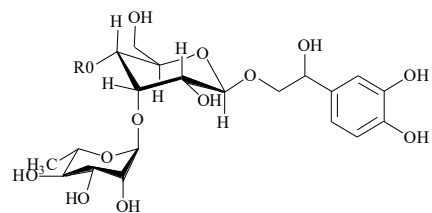
53



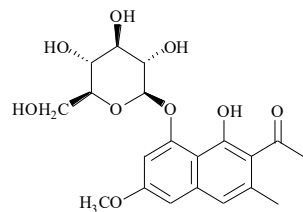
62



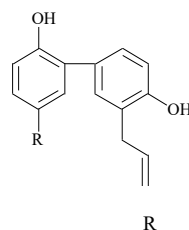
	R ₁	R ₂	R ₃
79	OH	H	OH
84	H	OH	H



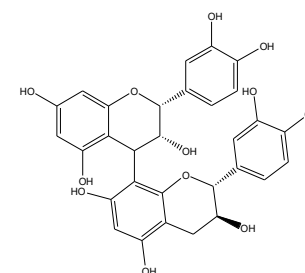
88



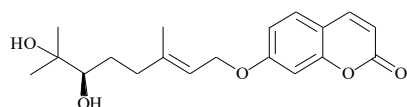
89



R



105



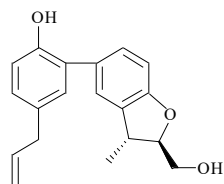
101

103

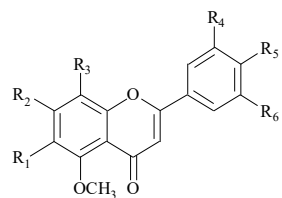
CH₂CHOHCH₂OH

114

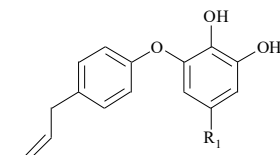
OH



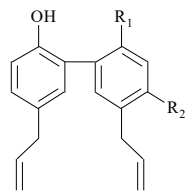
115



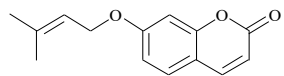
	R ₁	R ₂	R ₃	R ₄	R ₅	R ₆
117	OCH ₃	OCH ₃	OH	H	OCH ₃	OCH ₃
118	OCH ₃	OCH ₃	OCH ₃	OH	OCH ₃	H
120	OCH ₃	H	OCH ₃	OCH ₃	OCH ₃	H
129	OCH ₃	OCH ₃	OCH ₃	OCH ₃	OCH ₃	H
136	H	OCH ₃	OCH ₃	OCH ₃	OCH ₃	H
137	OCH ₃	OCH ₃	H	H	OCH ₃	H



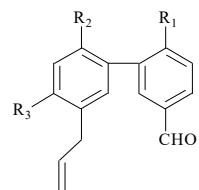
	R ₁
119	CH=CHCHO
135	CHO



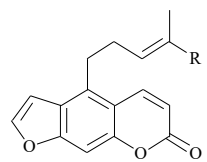
	R ₁	R ₂
121	H	OH
133	OH	H



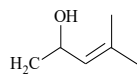
122



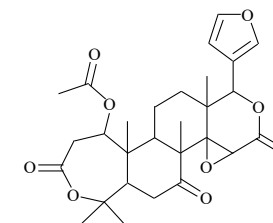
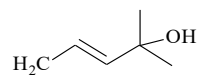
	R ₁	R ₂	R ₃
124	OH	OH	H
132	OH	H	OH



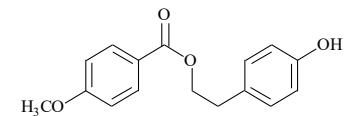
126



131



130



134

Fig.S2 The chemical structures of compounds in SHD