

Supporting information

Objective Quantification of Surface Roughness Parameters Affecting Superhydrophobicity

Yoonkyung Cho^a and Chung Hee Park^{*a}

^a *Department of Textiles, Merchandising and Fashion Design, Seoul National University,
Seoul, 08826, Republic of Korea*

^{*} *Corresponding Authors: Prof. Chung Hee Park (junghee@snu.ac.kr)*

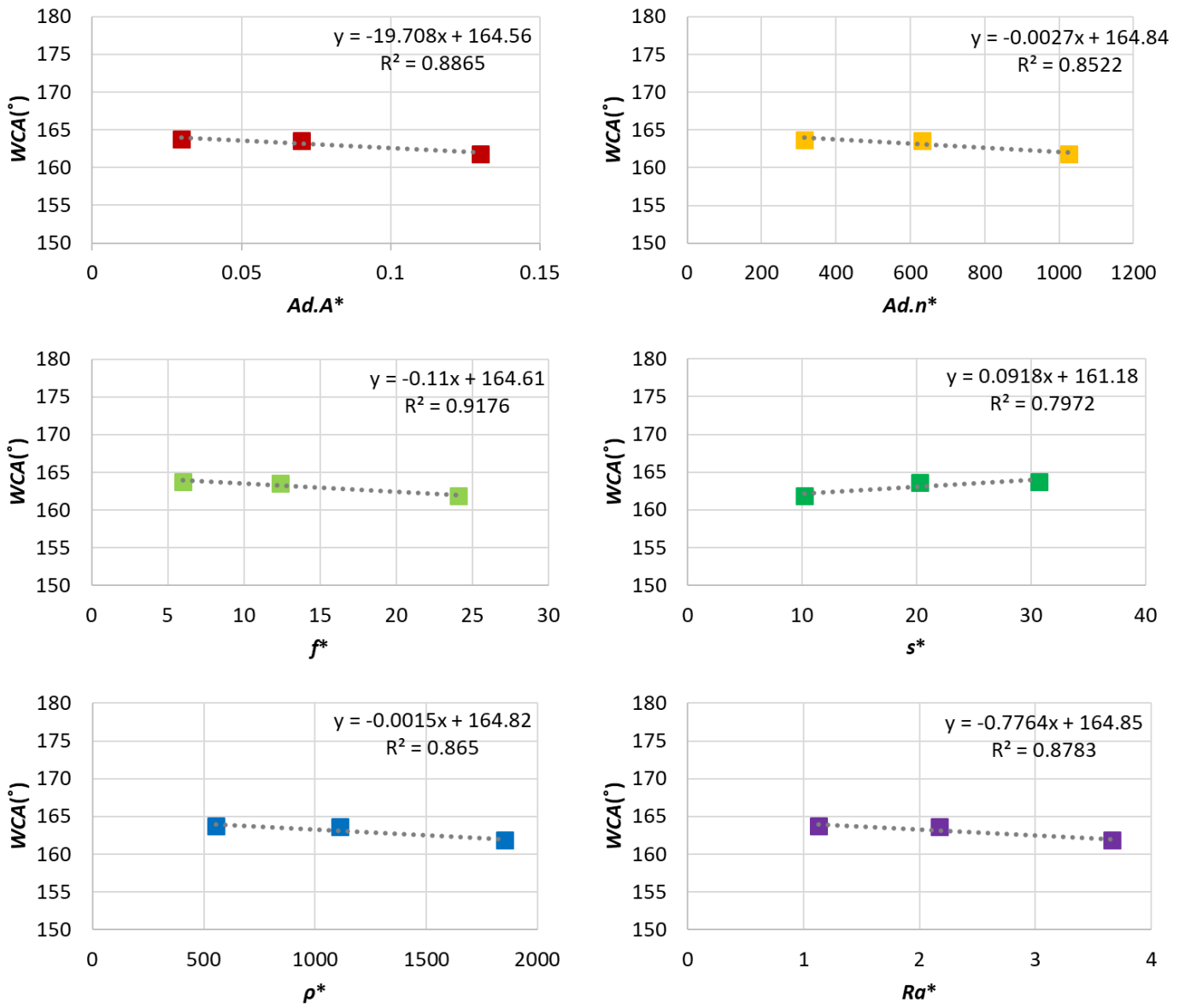


Fig. S1 (a) Plots of linear regression results of optical roughness parameters and water contact angle of H10 samples with 3.5- μ l water droplet

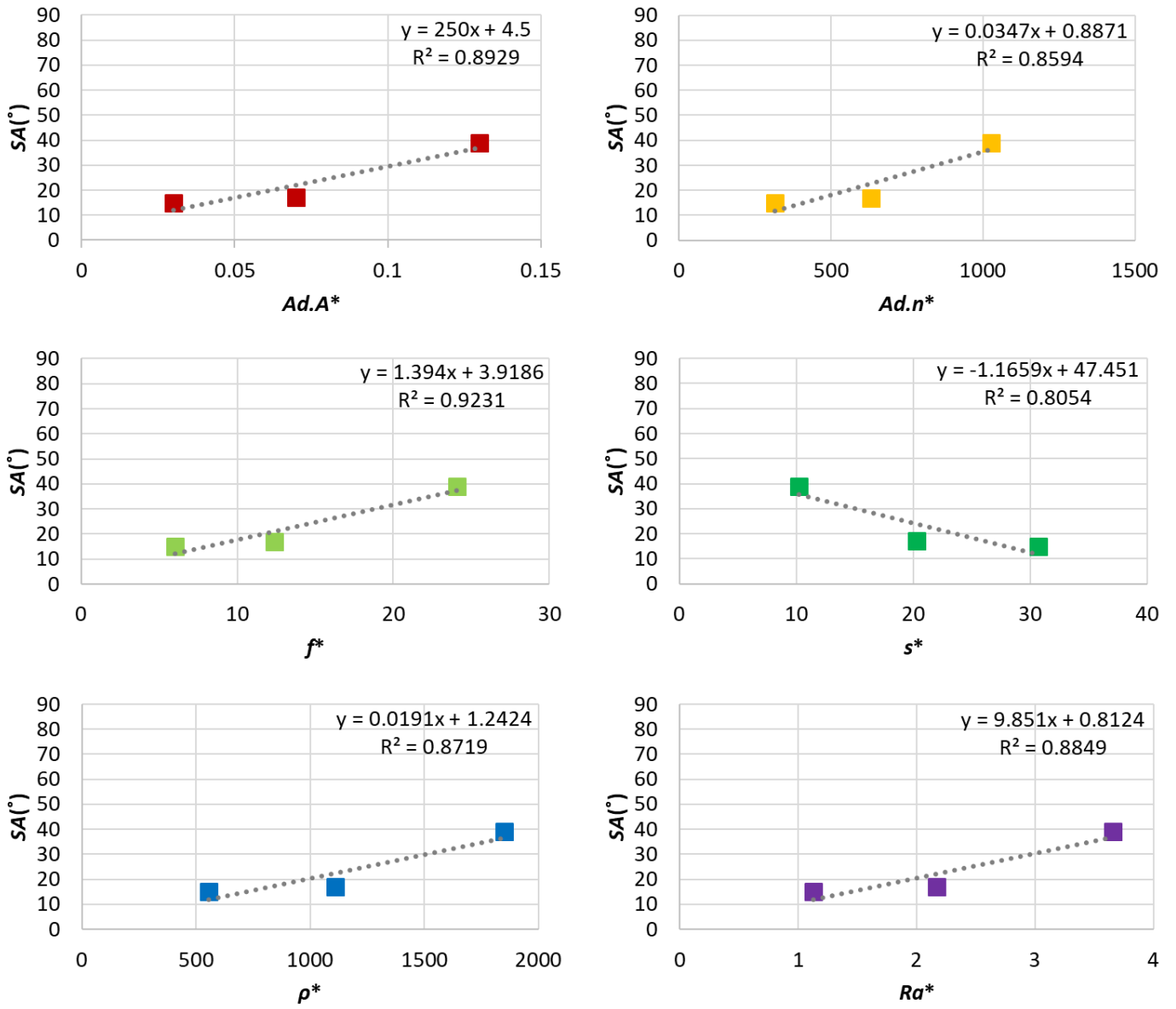


Fig. S1 (b) Plots of linear regression results of optical roughness parameters and sliding angle of H10 samples with 3.5- μ l water droplet

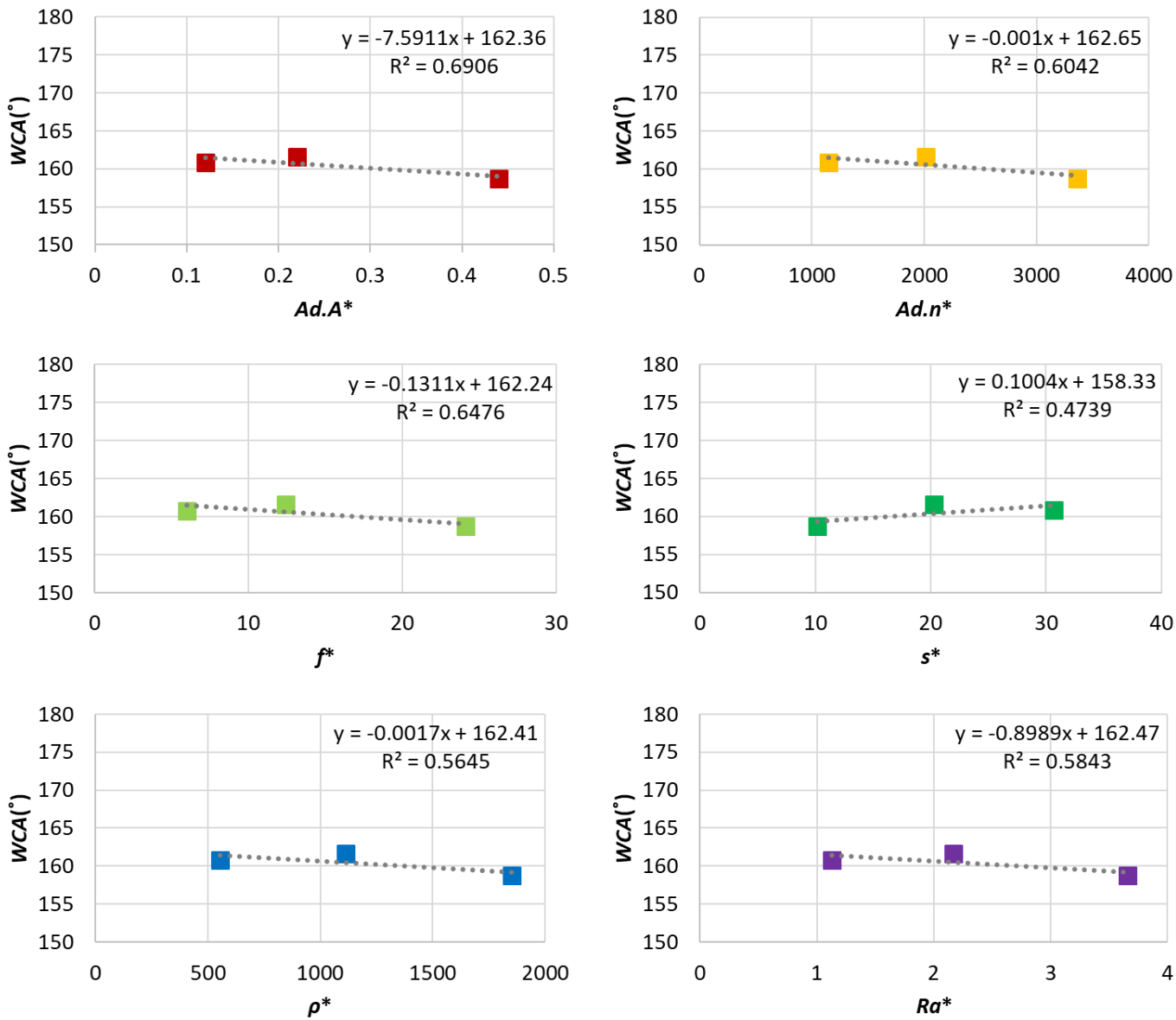


Fig. S1 (c) Plots of linear regression results of optical roughness parameters and water contact angle of H10 samples with 12- μ l water droplet

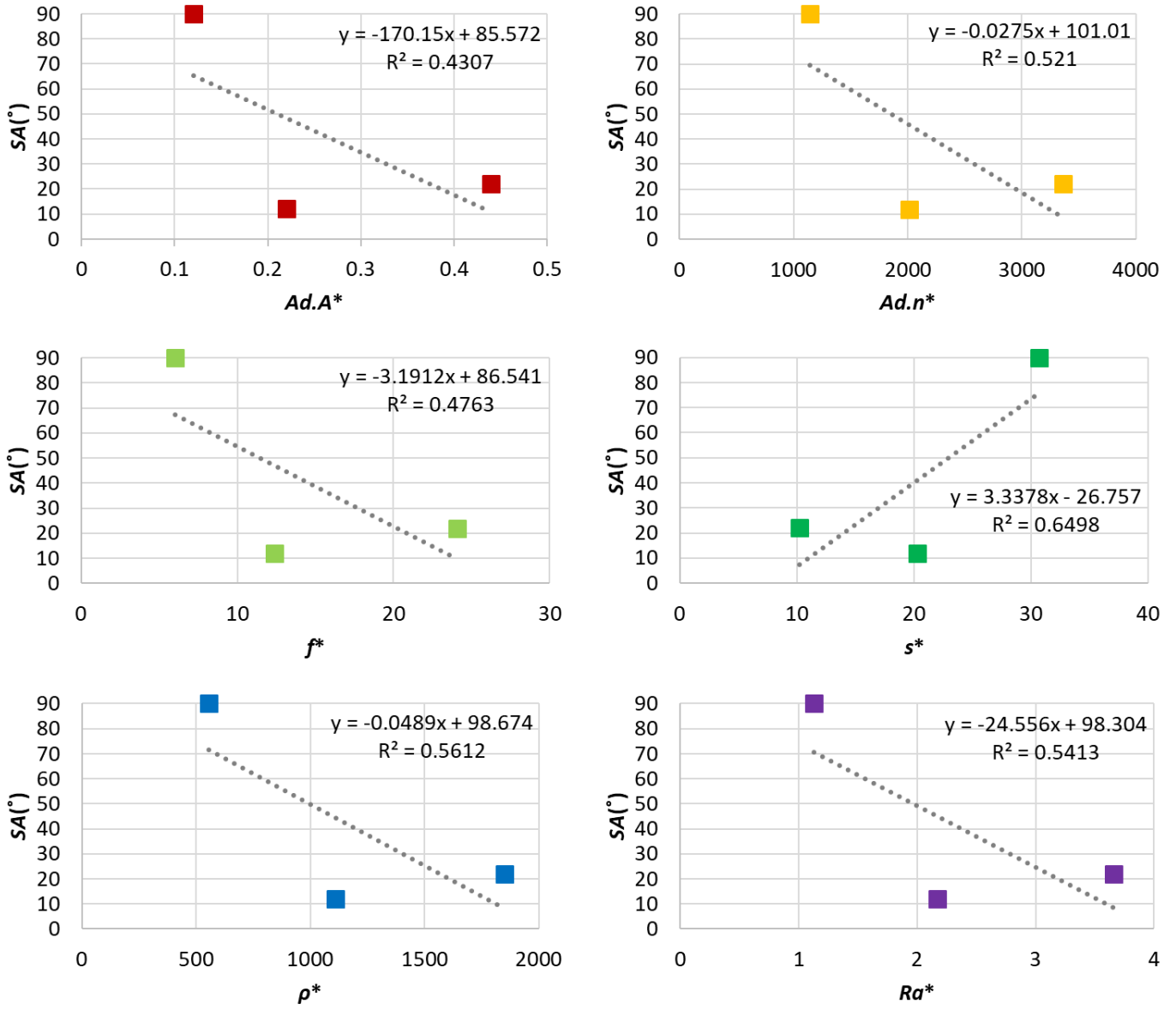


Fig. S1 (d) Plots of linear regression results of optical roughness parameters and sliding angle of H10 samples with 12- μ l water droplet

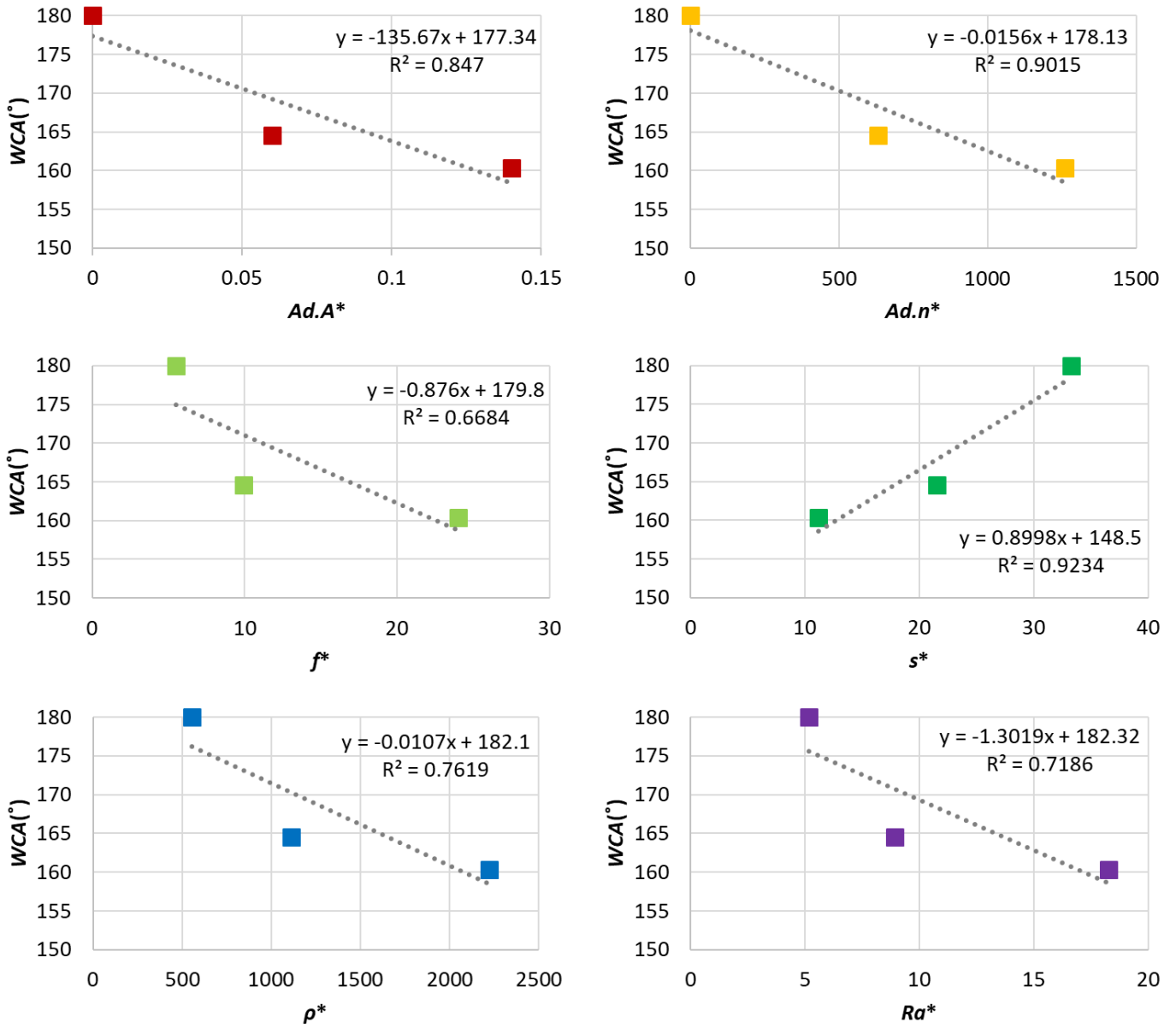


Fig. S1 (e) Plots of linear regression results of optical roughness parameters and water contact angle of H50 samples with 3.5- μ l water droplet

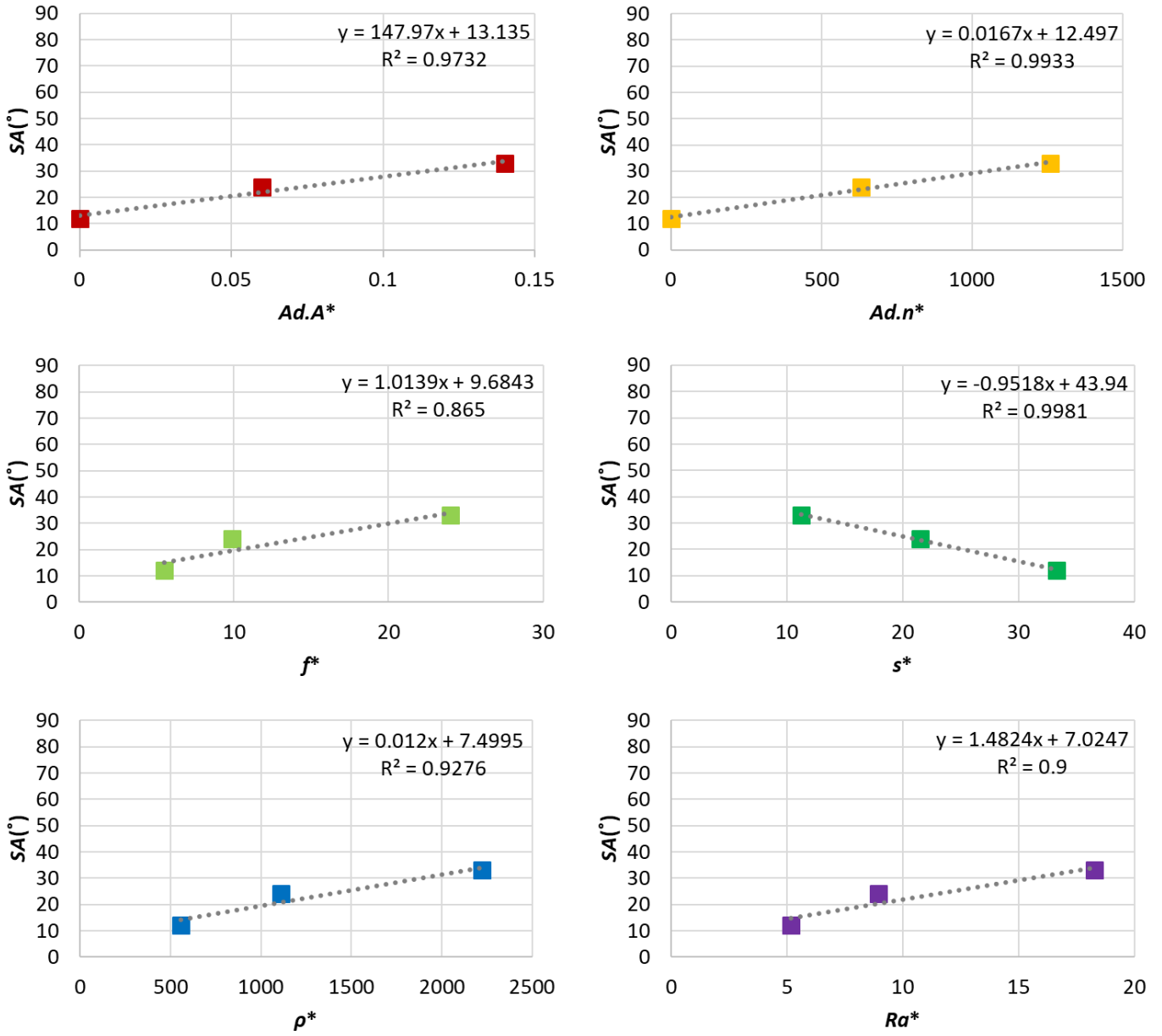


Fig. S1 (f) Plots of linear regression results of optical roughness parameters and sliding angle of H50 samples with 3.5- μ m water droplet

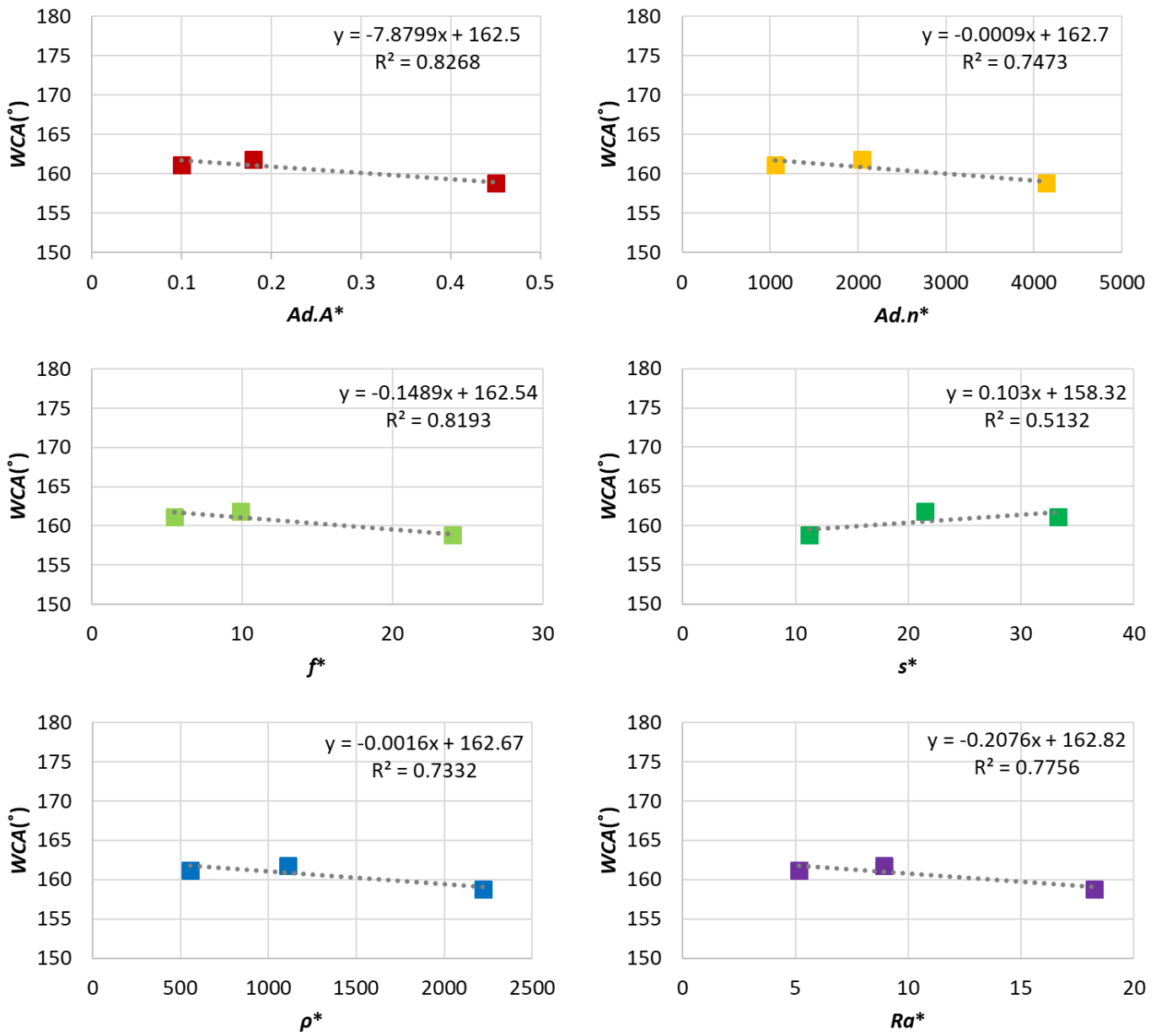


Fig. S1 (g) Plots of linear regression results of optical roughness parameters and water contact angle of H50 samples with 12- μ l water droplet

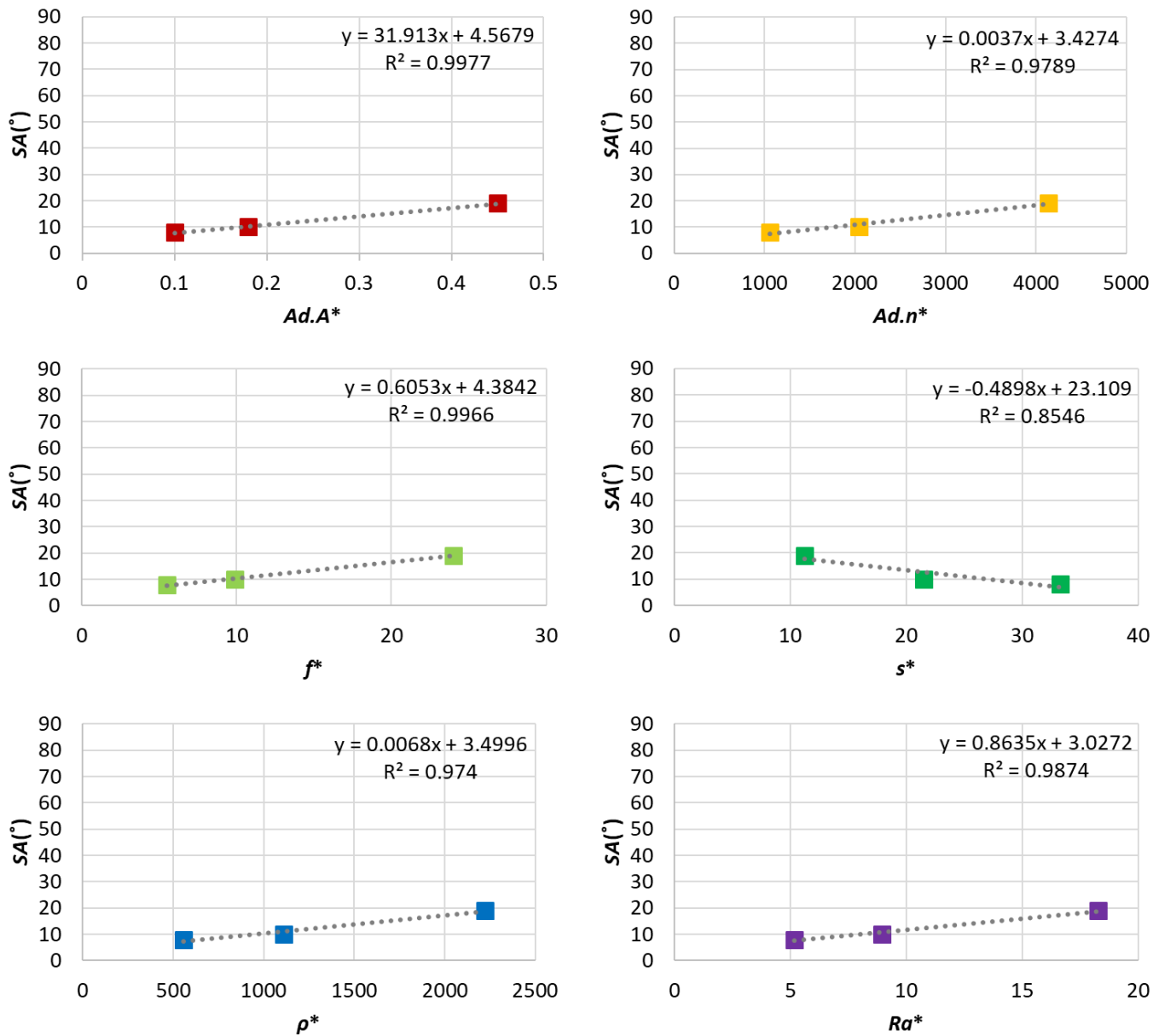


Fig. S1 (g) Plots of linear regression results of optical roughness parameters and sliding angle of H50 samples with 12-μl water droplet