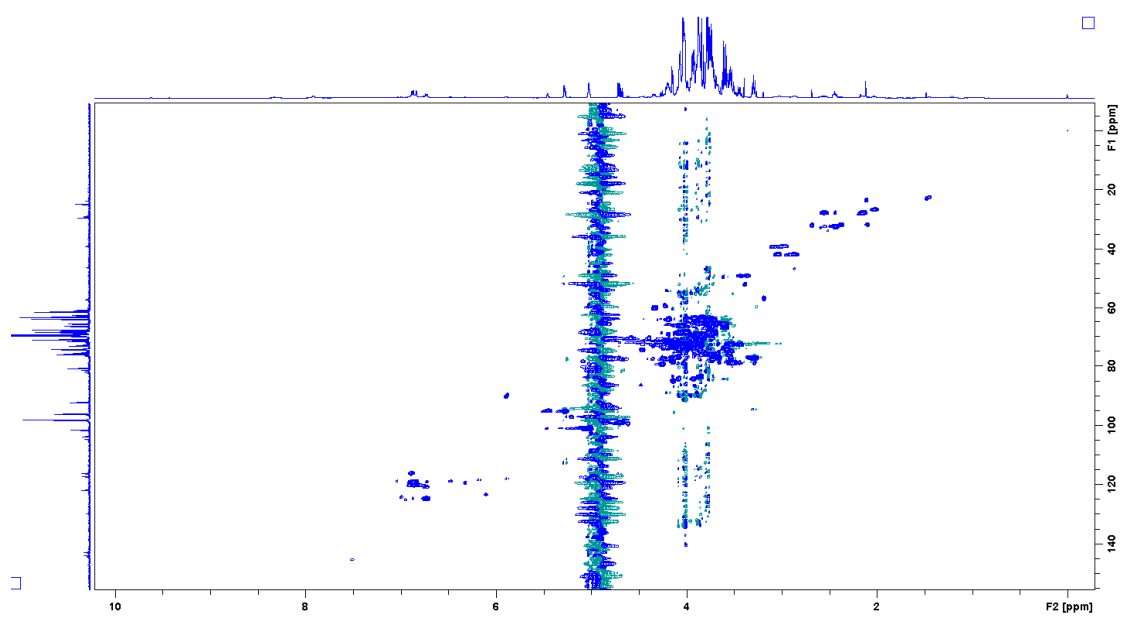


Fig. S1 A representative <sup>13</sup>C NMR spectrum of Danshen water extract solution



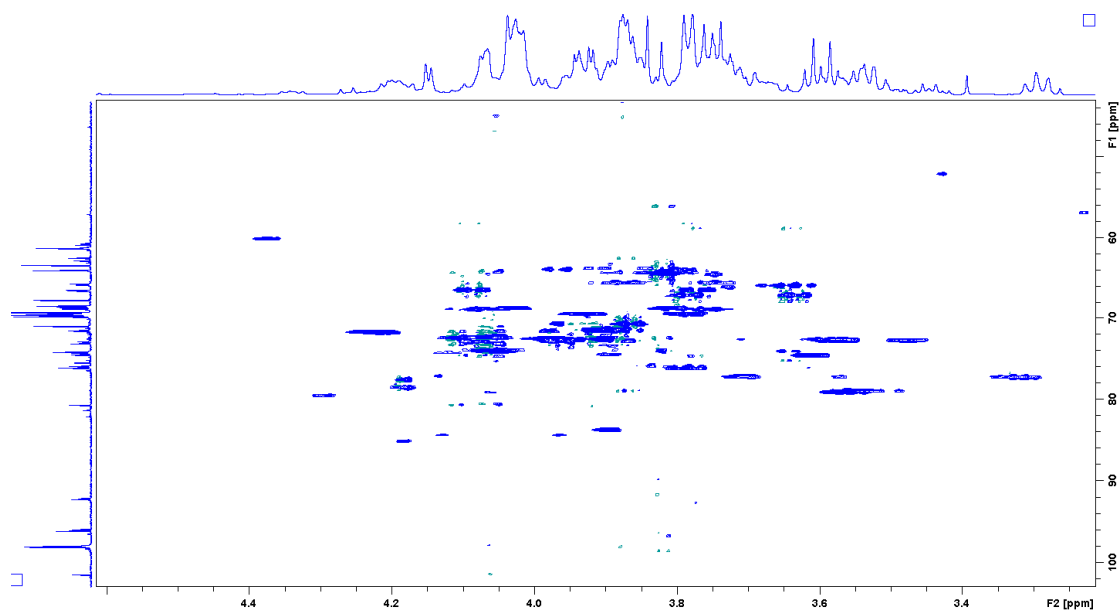
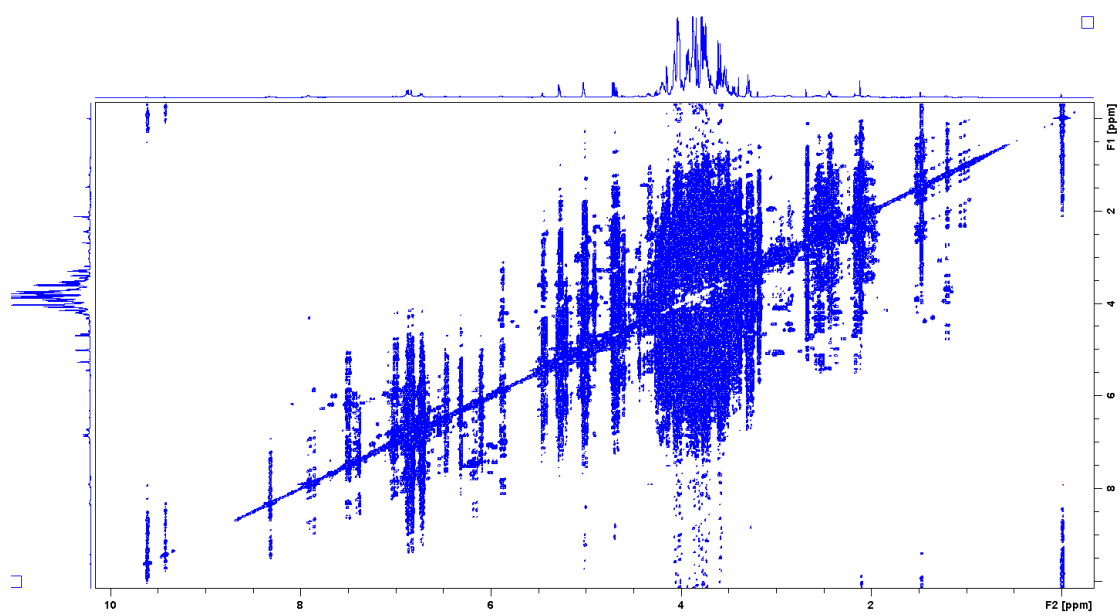


Fig. S2 Representative HSQC NMR spectra of Danshen water extract solution



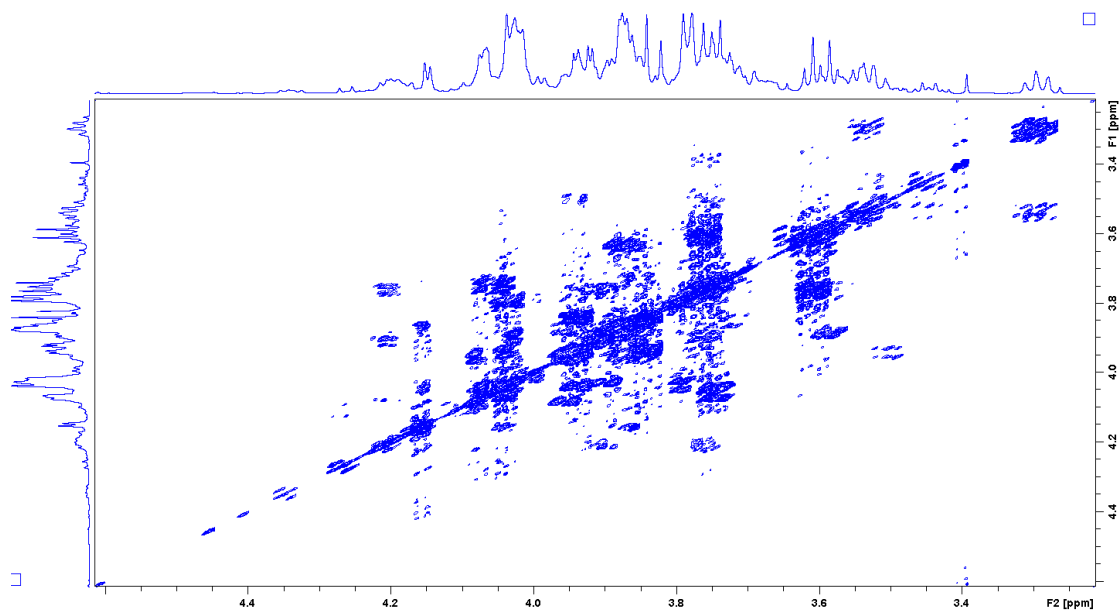


Fig. S3 Representative COSY NMR spectra of Danshen water extract solution

Table S1 Average concentrations of 7 kinds of saccharides in six batches of

		Danshen extract intermediates A and B	
		Concentration	
Intermediate		/g·g <sup>-1</sup>	
		A	B
Fructose		21.72	41.71
	RSD/%	24.39	8.77
Glucose		10.83	14.44
	RSD/%	23.48	14.09
Sucrose		50.65	2.35
	RSD/%	22.22	34.25
Melibiose		/	6.13
	RSD/%	/	16.78
Raffinose		24.37	2.55
	RSD/%	11.68	18.04
Manninotriose		34.66	102.30
	RSD/%	56.60	10.65
Stachyose		261.16	18.68
	RSD/%	6.05	64.6