

Supporting Information

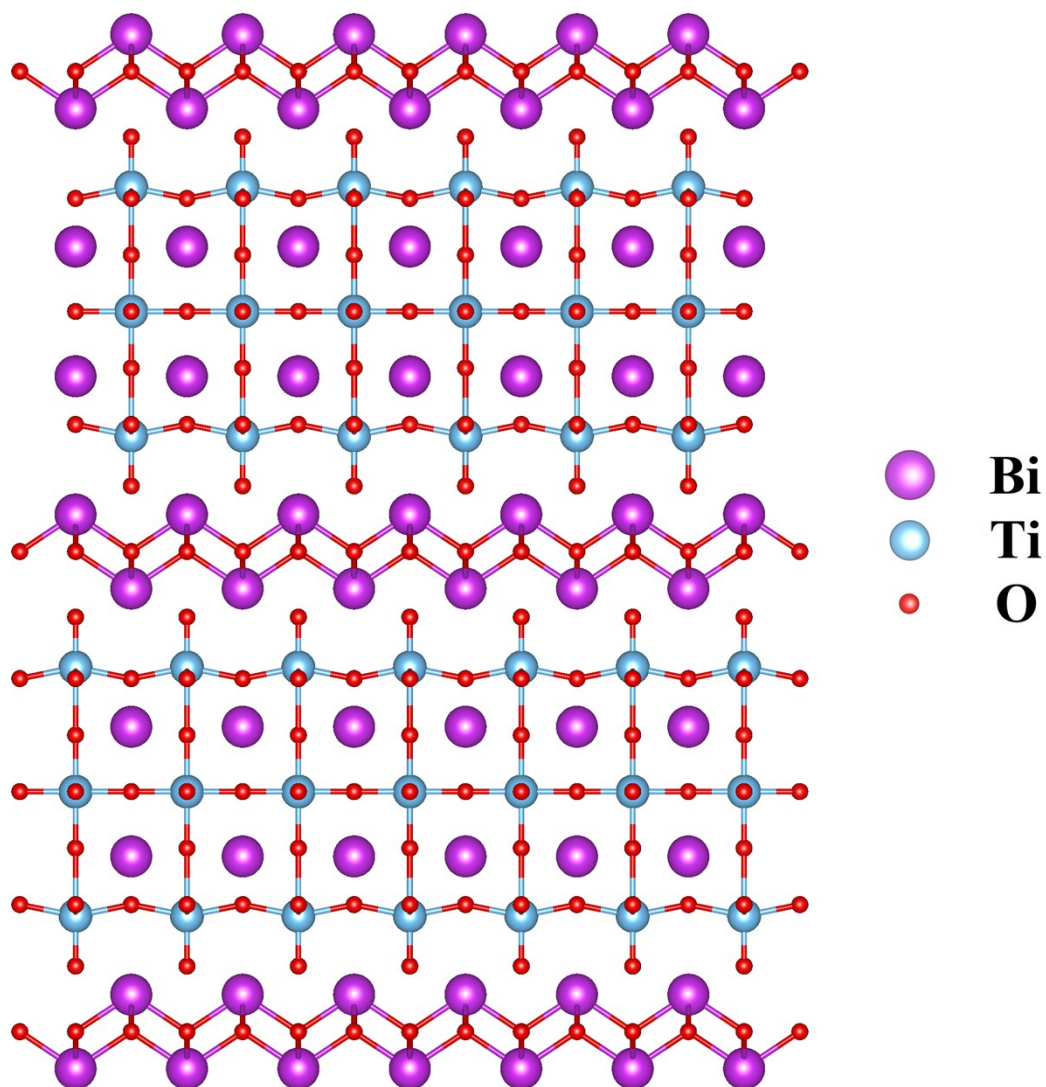


Fig. S1. A crystal structure model of $\text{Bi}_4\text{Ti}_3\text{O}_{12}$.



Fig. S2. A photo of the photocatalysis reaction setup.

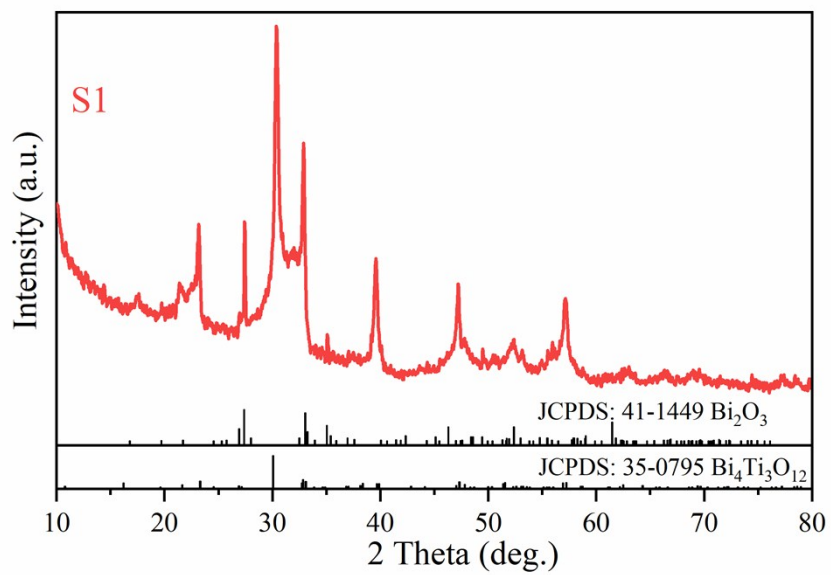


Fig. S3. XRD patterns of S1.

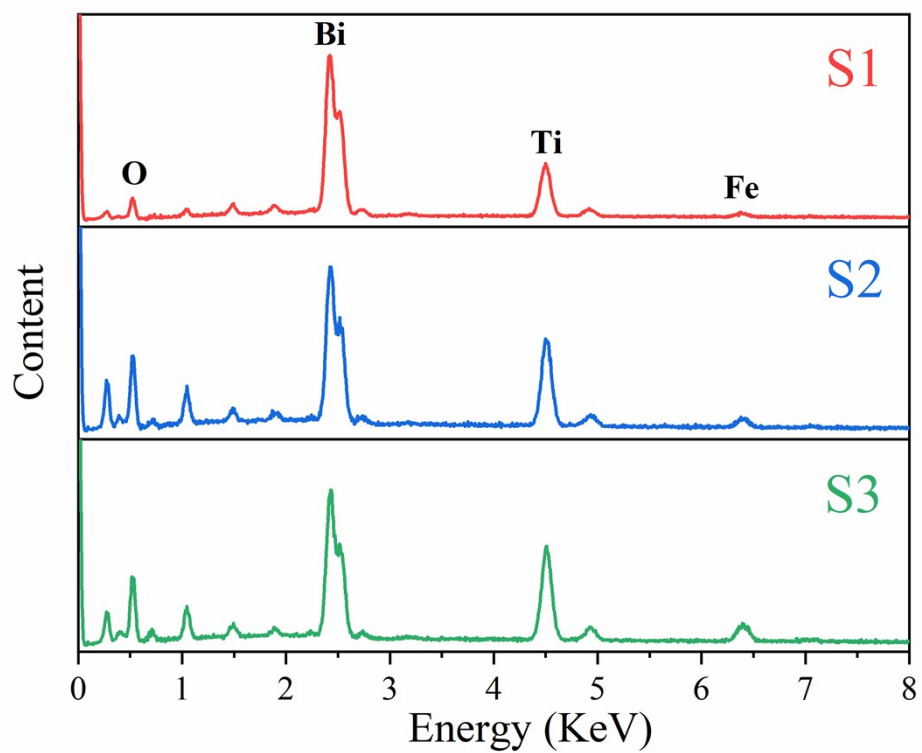


Fig. S4. EDS pattern of the samples.

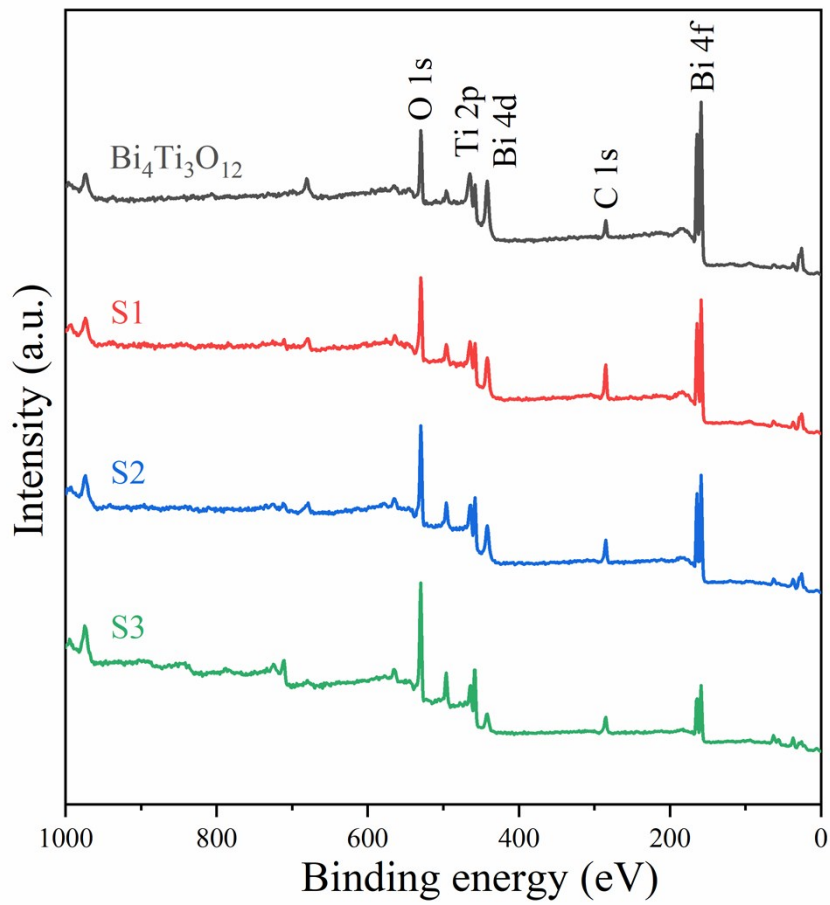


Fig. S5. XPS survey spectra of the samples.

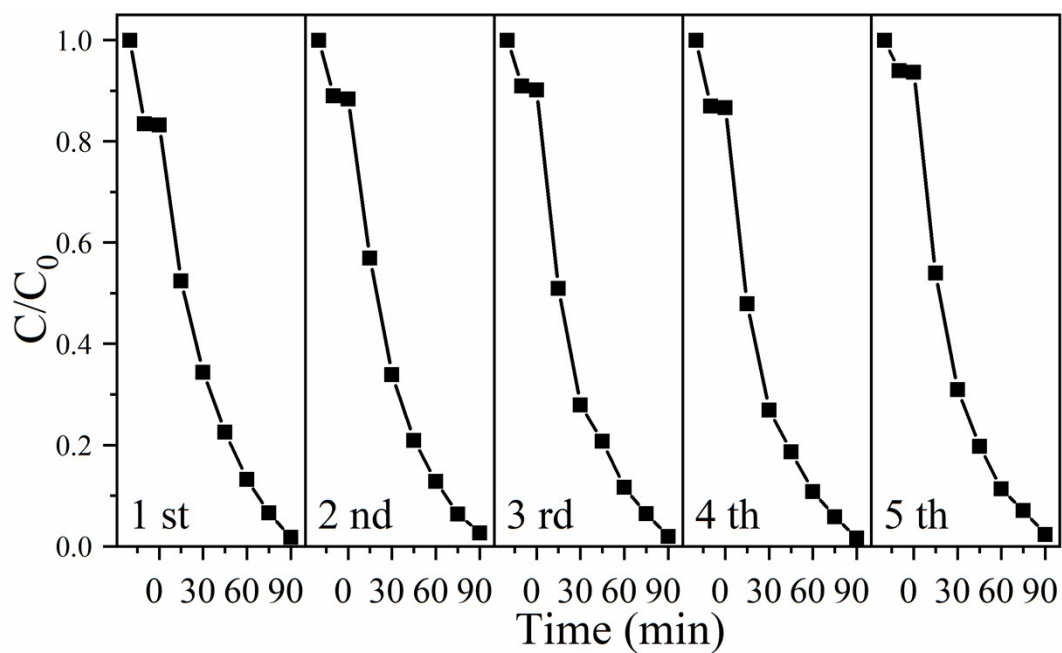


Fig. S6. Reusability of S2 for the photodegradation of MB with 5 cycles.

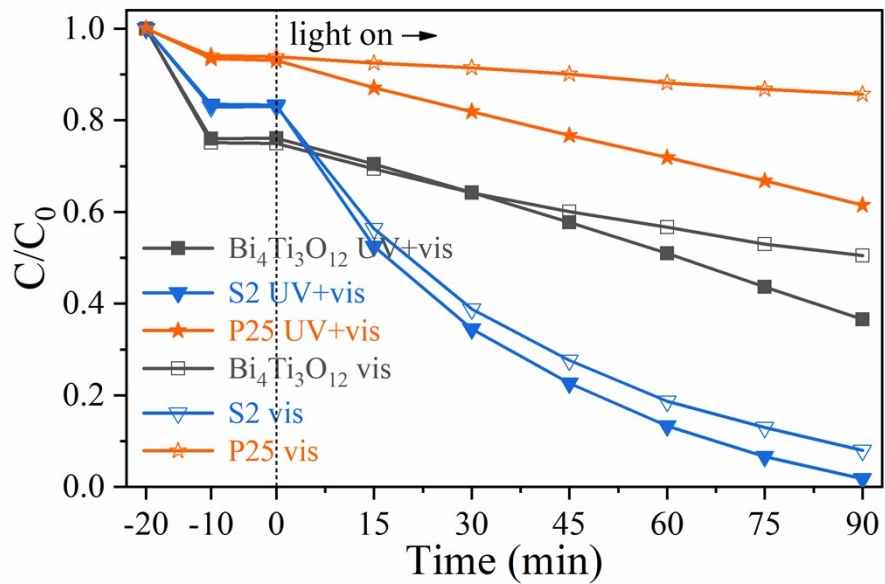


Fig. S7. Photodegradation of 20 mg/L MB solution under different light irradiation.

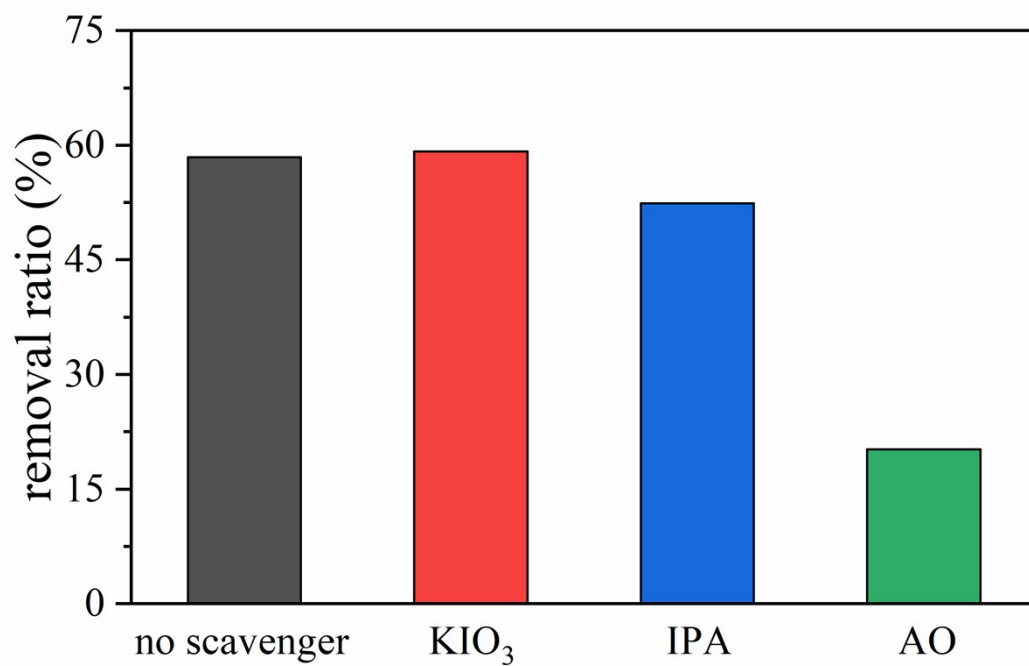


Fig. S8. The influence of different scavengers on the photodegradation of CIP using S2.

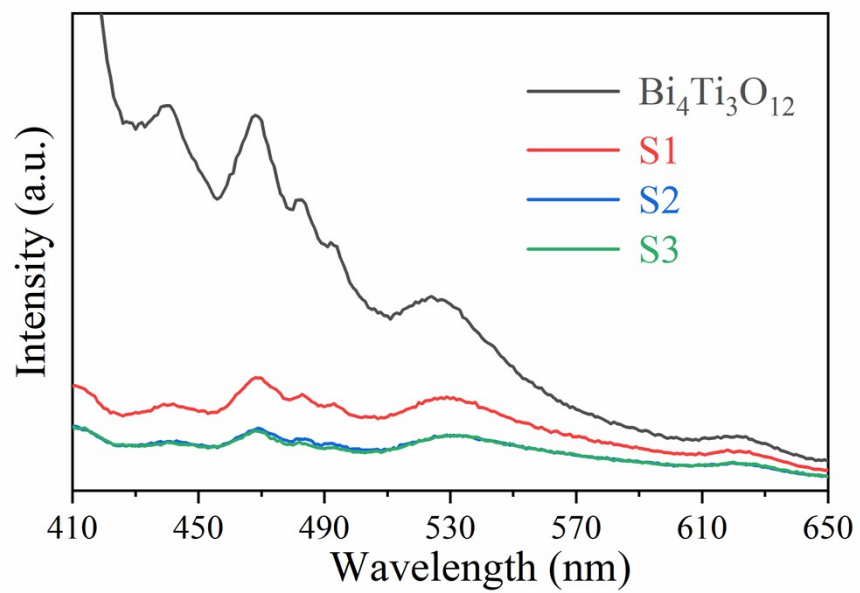


Fig. S9. PL spectra of the samples.

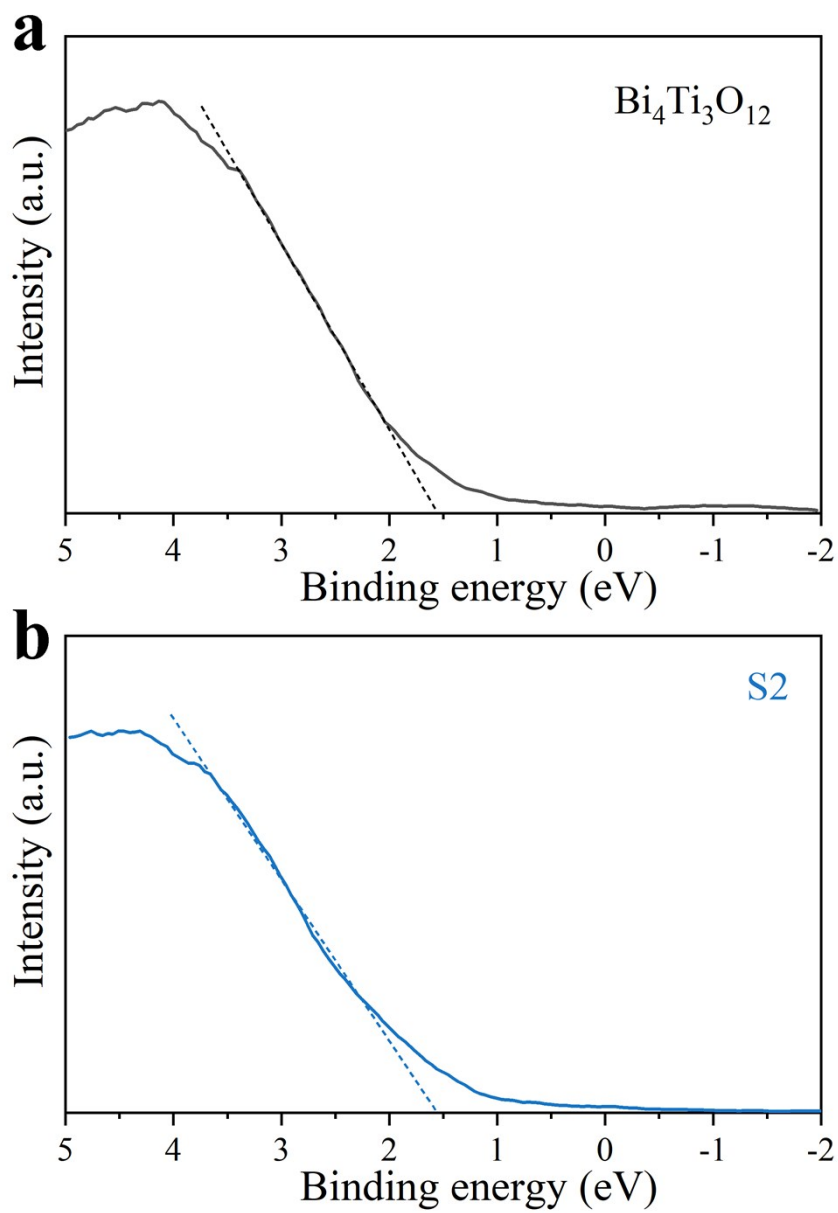


Fig. S10. XPS valence band spectrum of $\text{Bi}_4\text{Ti}_3\text{O}_{12}$ (a) and S2 (b).