

Fig. S1 TEM images of prepared borophene under different conditions: 225 W (a-c), 450 W (d-f), and 675 W (g-i), respectively.

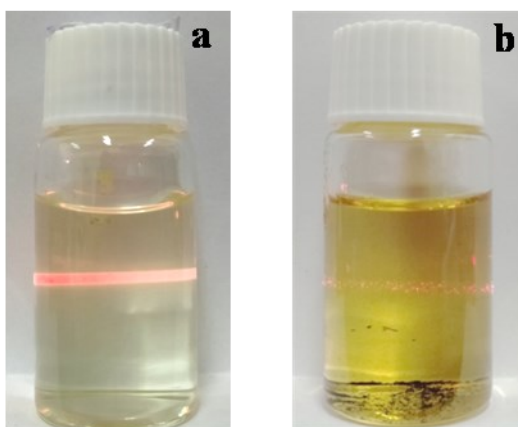


Fig. S2 The colloidal stability of the delaminated borophene suspensions in acetone (a) and acetonitrile (b) after placing for three months at room temperature.

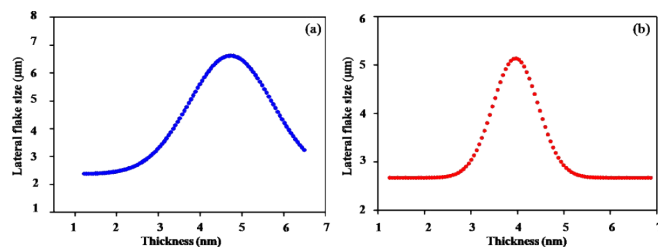


Fig. S3 Plots of lateral flake size vs thickness of borophene with few layers in acetone (a) and acetonitrile (b).

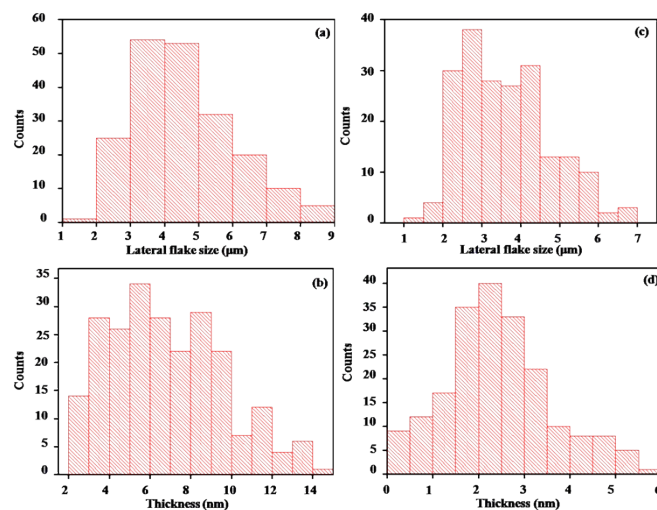


Fig. S4 Statistical data showing the average lateral flake size and the thickness of borophene with few layers in DMF (a-b) and acetonitrile (c-d).

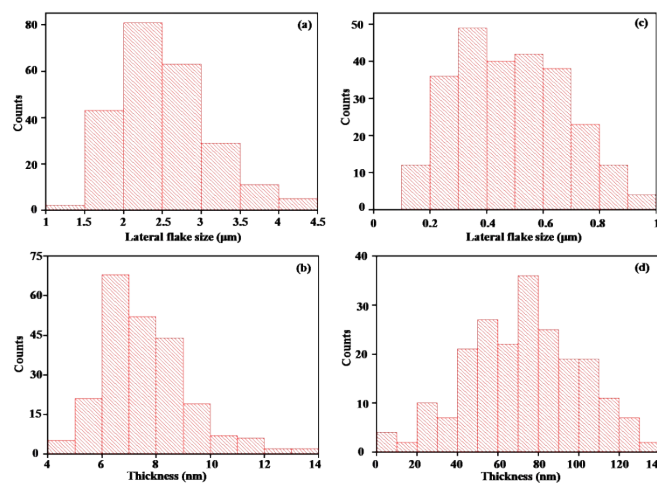


Fig. S5 Statistical data showing the average lateral flake size and the thickness of borophene with few layers in ethanol (a-b) and NMP (c-d).

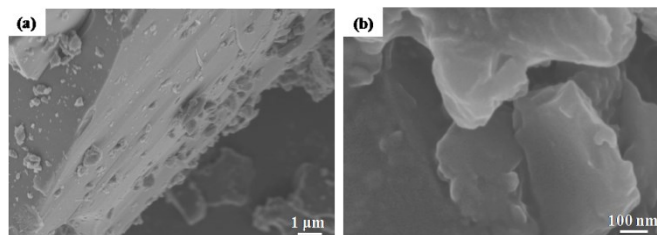


Fig. S6 SEM images with low resolution (a) and high resolution (b) of Bulk B.

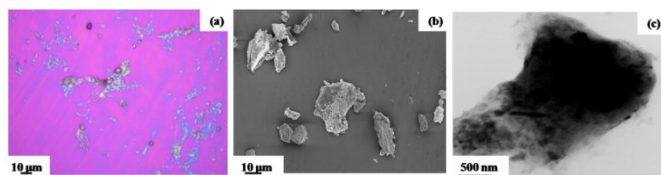


Fig.S7 Optical microscope photo (a), SEM image (b), and TEM image (c) of the prepared borophene without solvothermal pretreatment procedure.