

## Supplementary Information

### Storage Performance of $\text{Mg}^{2+}$ substituted $\text{NaMnPO}_4$ with an olivine structure

Tanya Boyadzhieva,<sup>a</sup> Violeta Koleva,<sup>a</sup> Rosica Kukeva,<sup>a</sup> Diana Nihtianova,<sup>a,b</sup> Sonya Harizanova<sup>a</sup> and Radostina Stoyanova<sup>a</sup>

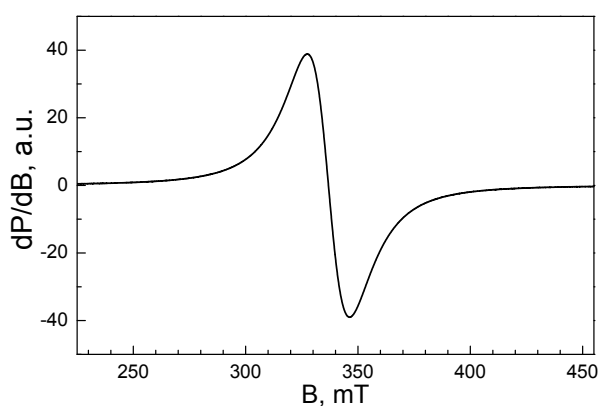
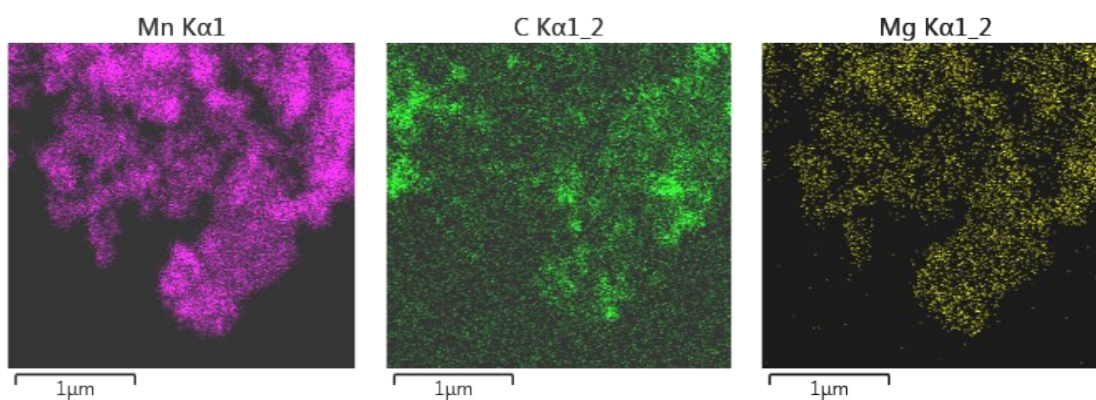


Figure S1. EPR spectrum of Mg-NMP/C composite



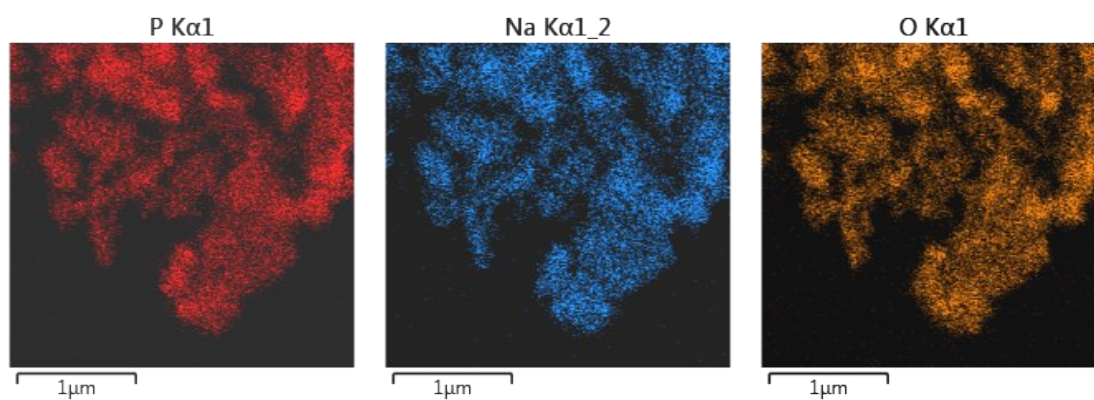


Figure S2. BF -STEM images and corresponding composition map of Mg-NMP/C composite

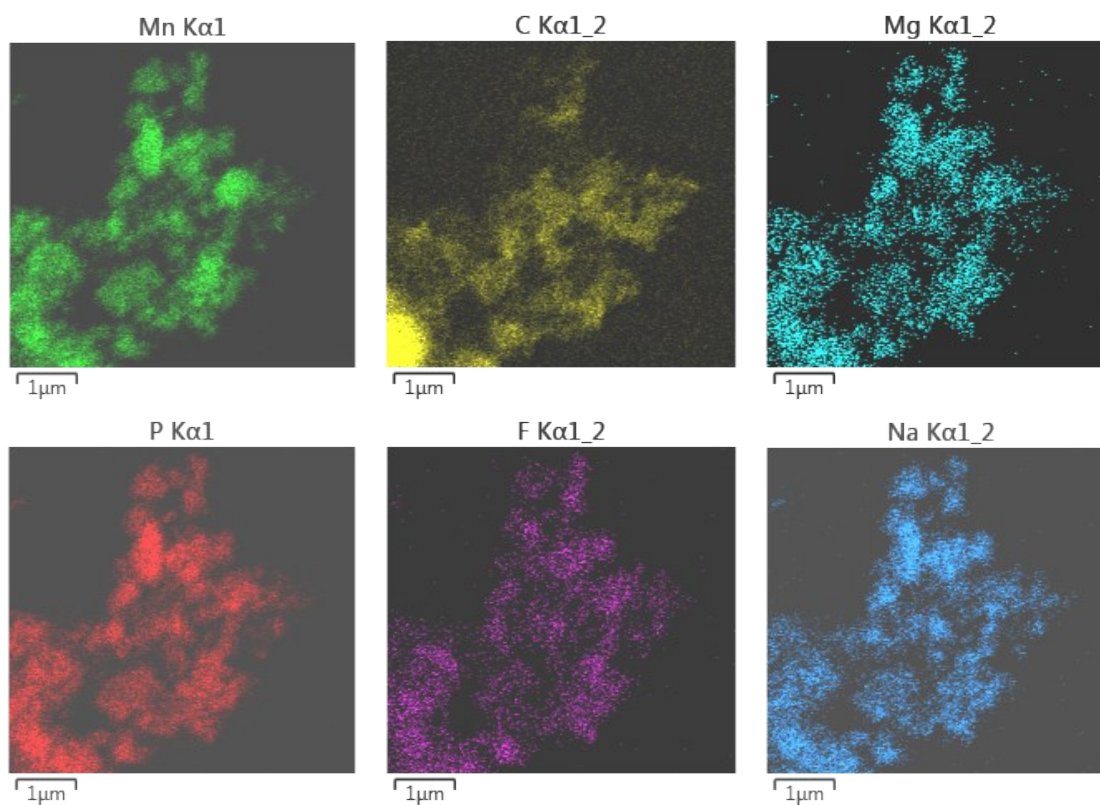


Figure S3. BF -STEM images and corresponding composition map of Mg-NMP/C electrode cycled in NaPF<sub>6</sub> (vs Li anode)

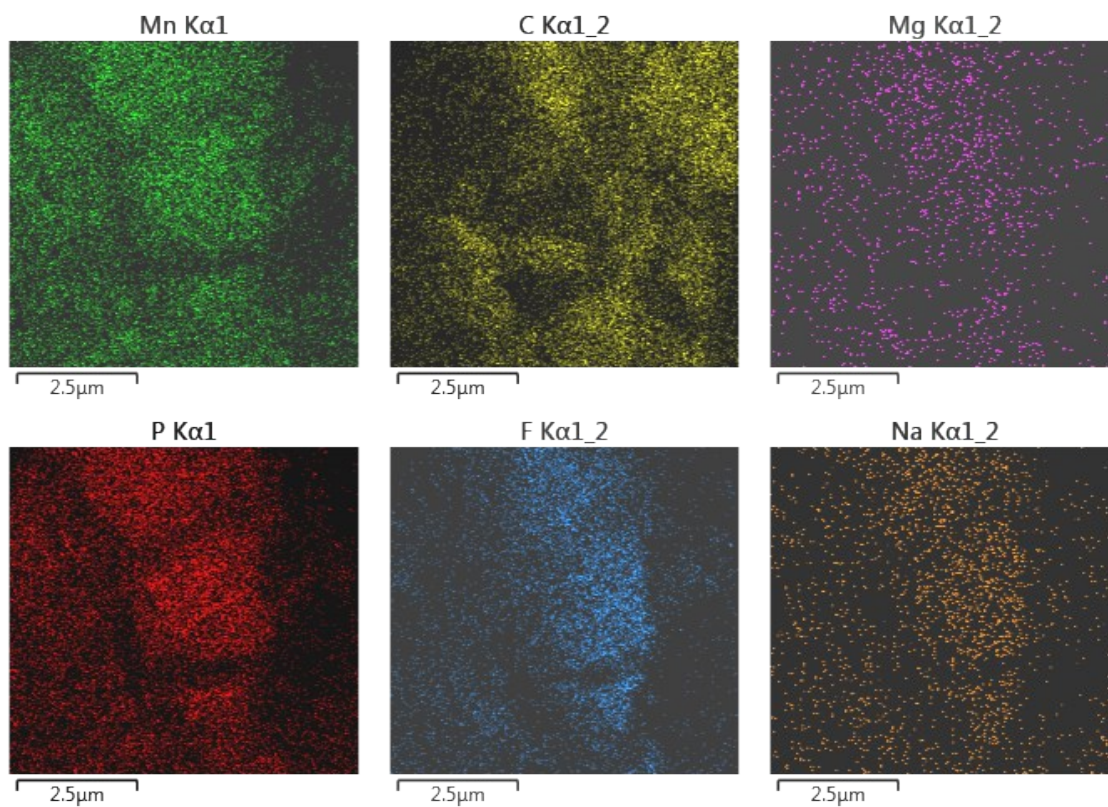


Figure S4. BF -STEM images and corresponding composition map of Mg-NMP/C electrode cycled in  $\text{LiPF}_6$  (vs Li anode) .