

Supplementary information

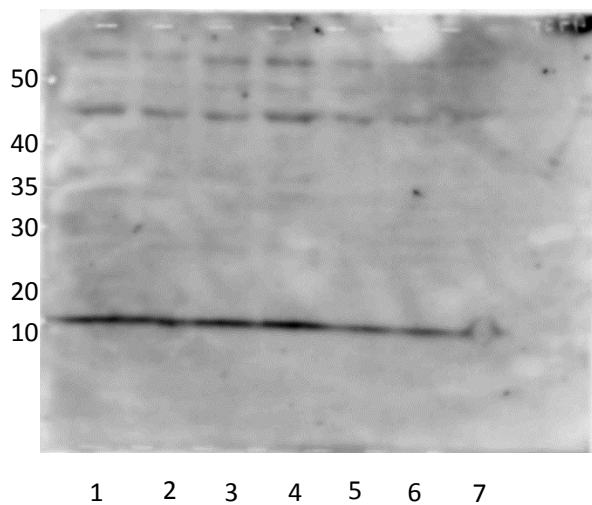
Table 1. Amount of quercetin in Au^{Qur}NP

	Quercetin entrapment efficiency (%)	Free Quercetin (ng/ml)
AuNP	0	0
Au ^{Qur} NP (0.5 μg/L)	58.2 (± 2.9)	5.2 (± 1.6)
Au ^{Qur} NP (1.0 μg/L)	63.2 (± 4.3)	3.8 (± 1.5)
Au ^{Qur} NP (5.0 μg/L)	61.9 (± 5.4)	4.6 (± 0.6)
Au ^{Qur} NP (10.0 μg/L)	51.4 (± 6.9)	5.1 (± 0.3)

Figure 8. TGFβ1 Protein expression

sample	β actin		TGFβ1		TGFβ1 /β actin
	vol	norm	vol	norm	
1	163032	100	8163.6	100	1
2	155884	95.62	3795.5	46.49	0.486195357
3	140852.8	86.4	4696.46	57.53	0.665856481
4	149300.2	91.58	9064.25	111.03	1.212382616
5	144442.5	88.6	5835.55	71.48	0.806772009
6	160650	98.54	2718.09	33.3	0.337933834
7	125721.5	77.11	2560.27	31.36	0.406691739

- TGFβ1 (Immature : 44-45 kDa ; cleaved : 13 kDa)



β actin (45 kDa)

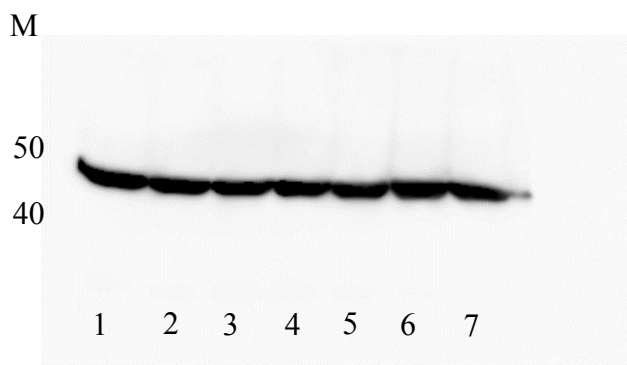
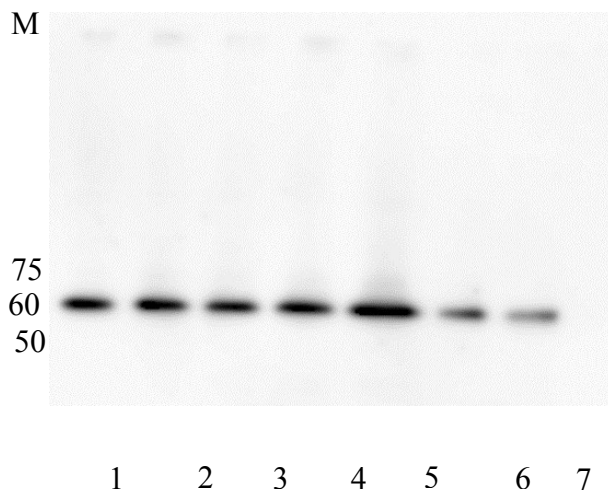


Figure 9. SMAD group Protein expression

SMAD 2 (60 KDa) Original Blot

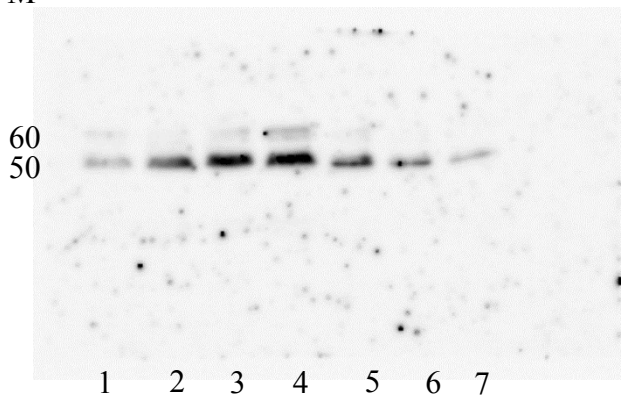
sample	SMAD 2		SMAD 2/ β actin
	vol	norm	
1	129336.5	100	1
2	134945	104.34	1.568079351
3	129884	100.42	0.901679088
4	157457.8	121.74	0.80708035
5	202657.1	156.69	1.093592965
6	107467	83.09	0.817493113
7	97673	75.52	0.596665877



SMAD 3 (50 KDa) Original Blot

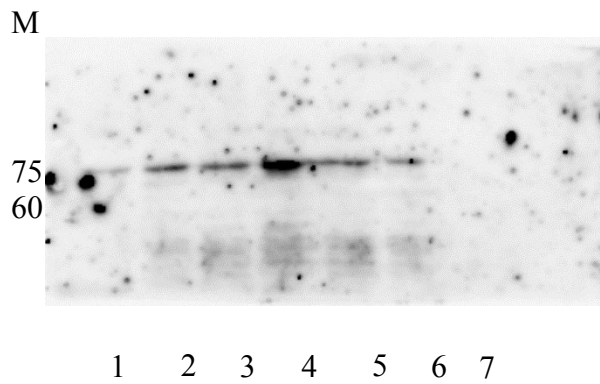
sample	SMAD 3		SMAD 3/ β actin
	vol	norm	
1	12314.63	100	1
2	42341.65	343.83	3.319463217
3	64741.1	525.72	5.63593482
4	70984.57	576.42	6.533892541
5	36025.39	292.54	3.276657706
6	20838.36	169.22	1.979412797
7	9013.91	73.2	0.872363246

M



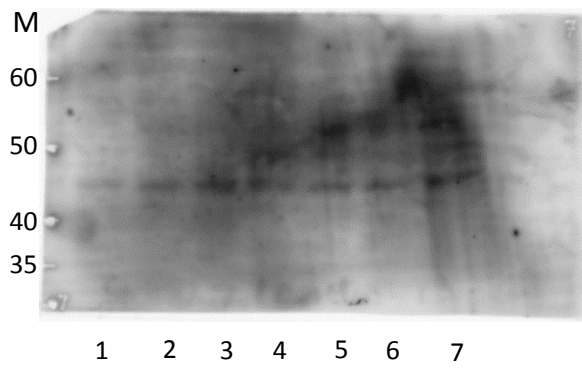
SMAD 4 (70 KDa) Original Blot

sample	SMAD 4		SMAD 4/ β 1actin
	vol	norm	
1	16763.92	100	1
2	54735.88	326.51	3.471664009
3	58110.5	346.64	4.458965783
4	114018.3	680.14	8.55306841
5	71577.03	426.97	8.260205069
6	34928.05	208.35	5.510446972
7			0

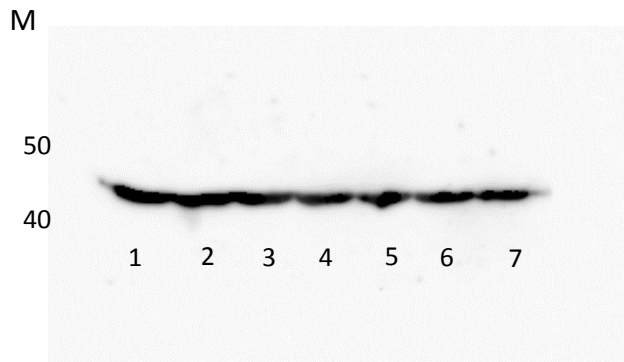


SMAD7 (46 kDa)

sample	SMAD 7		SMAD 7/ β 1actin
	vol	norm	
1	3250	100	1
2	4004	123.2	0.629695886
3	10377.85	319.32	1.369355461
4	4965.77	152.79	0.590743891
5	6052	186.22	0.851602872
6	7566	232.8	1.166741843
7	6647.67	204.54	1.299904671



β actin (45 kDa)



sample	β actin	
	vol	norm
1	190560.8	100
2	197385.6	103.58
3	177764	93.28
4	168118.3	88.22
5	170132.9	89.28
6	162919	85.49
7	159894.1	83.91